

# Supplemental Material

## Combination treatment with U0126 and rt-PA prevents adverse effects of rt-PA therapy after acute ischemic stroke

Cyrille Orset<sup>1</sup>, PhD; Kajsa Arkelius<sup>2</sup>, MSc; Antoine Anfray<sup>1</sup>, PhD; Karin Warfvinge<sup>3</sup>, DD PhD;  
Denis Vivien<sup>1,4</sup>, PhD; Saema Ansar<sup>2\*</sup>, PhD

<sup>1</sup> INSERM UMR-S U1237, Physiopathology and Imaging of Neurological Disorders, GIP Cyceron, Institut Blood and Brain @ Caen-Normandie (BB@C), Bd H. Becquerel, BP 5229, Caen, F-14074 France.

<sup>2</sup>Applied Neurovascular Research, Neurosurgery, Department of Clinical Sciences, Lund University, Lund, Sweden

<sup>3</sup>Experimental Vascular Research, Department of Clinical Sciences, Lund University, Lund, Sweden

<sup>4</sup>Department of Clinical Research, Caen-Normandie University Hospital, CHU, Caen, F-14000, France.

\*Corresponding author

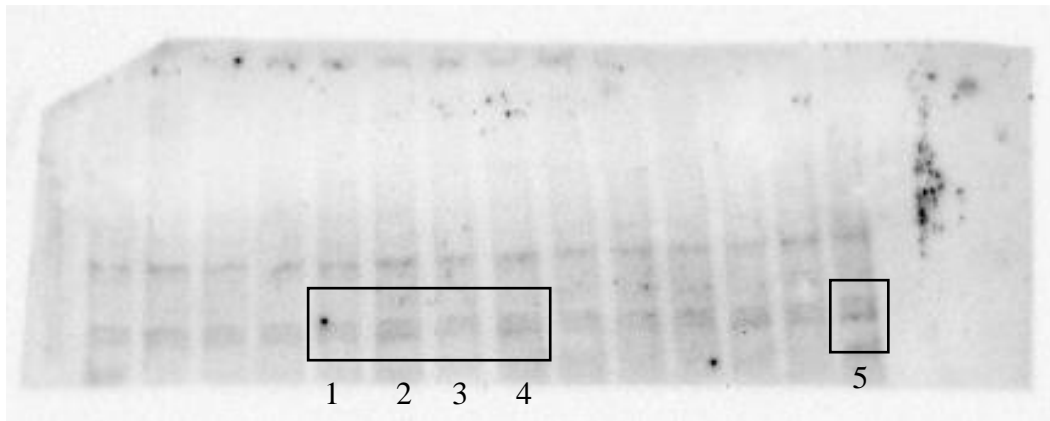
Saema Ansar, Applied Neurovascular Research, Neurosurgery, Department of Clinical Sciences, Klinikgatan 28, BMC C12, Lund University, SE-222 42 Lund, Sweden

Phone: +46 (0)70 3809786

E-mail: [Saema.Ansar@med.lu.se](mailto:Saema.Ansar@med.lu.se)

Figure 1.

a)



b)

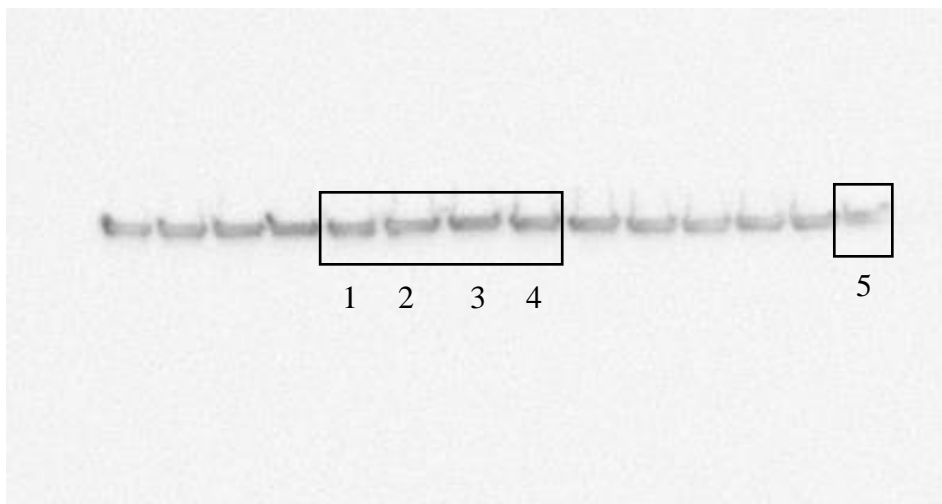


Figure 1. Complete western blot for representative picture of MMP-9 a) and its respective  $\beta$ -actin picture b) in Figure 4a in the article. 1 = Vehicle, 2 = rt-PA, 3 = rt-PA + U0126, 4 = U0126, 5 = control.

Figure 2

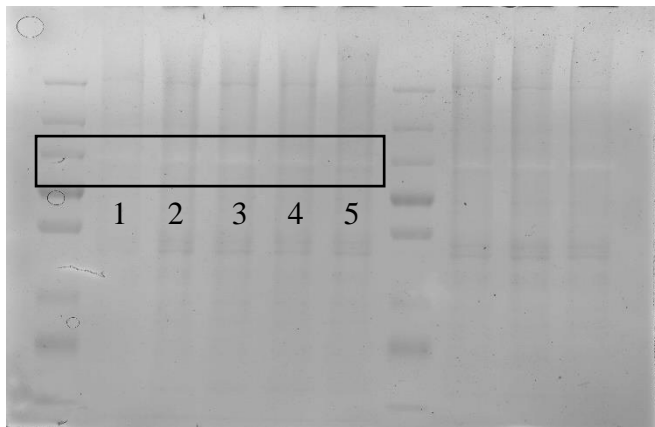
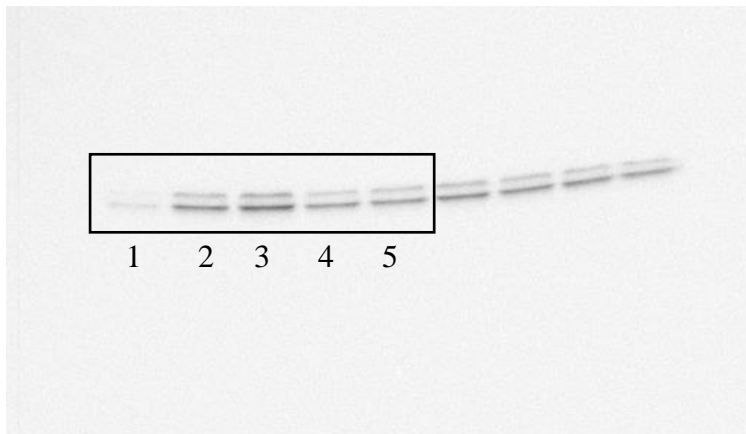


Figure 2. Complete zymography gel of representative image of MMP-9 in Figure 4b in the article. 1 = control, 2 = vehicle, 3 = rt-PA, 4 = rt-PA + U0126, 5 = U0126.

Figure 3.

a)



b)

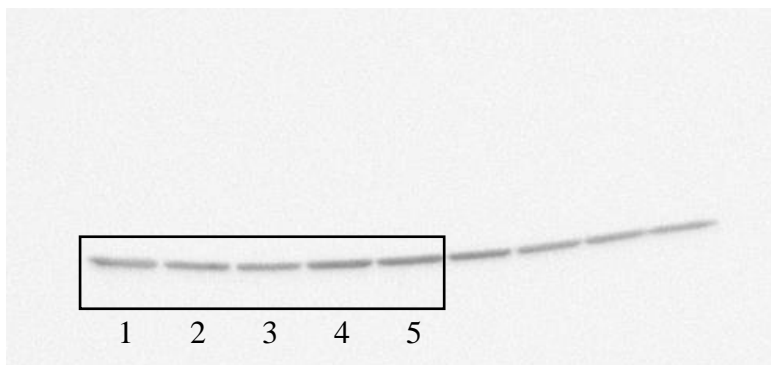


Figure 3. Complete western blot for representative picture of pERK1/2 a) and its respective  $\beta$ -actin picture b) in Figure 6a in the article. 1 = control, 2 = vehicle, 3 = rt-PA, 4 = rt-PA + U0126, 5 = U0126.