

Supplementary Figure 1

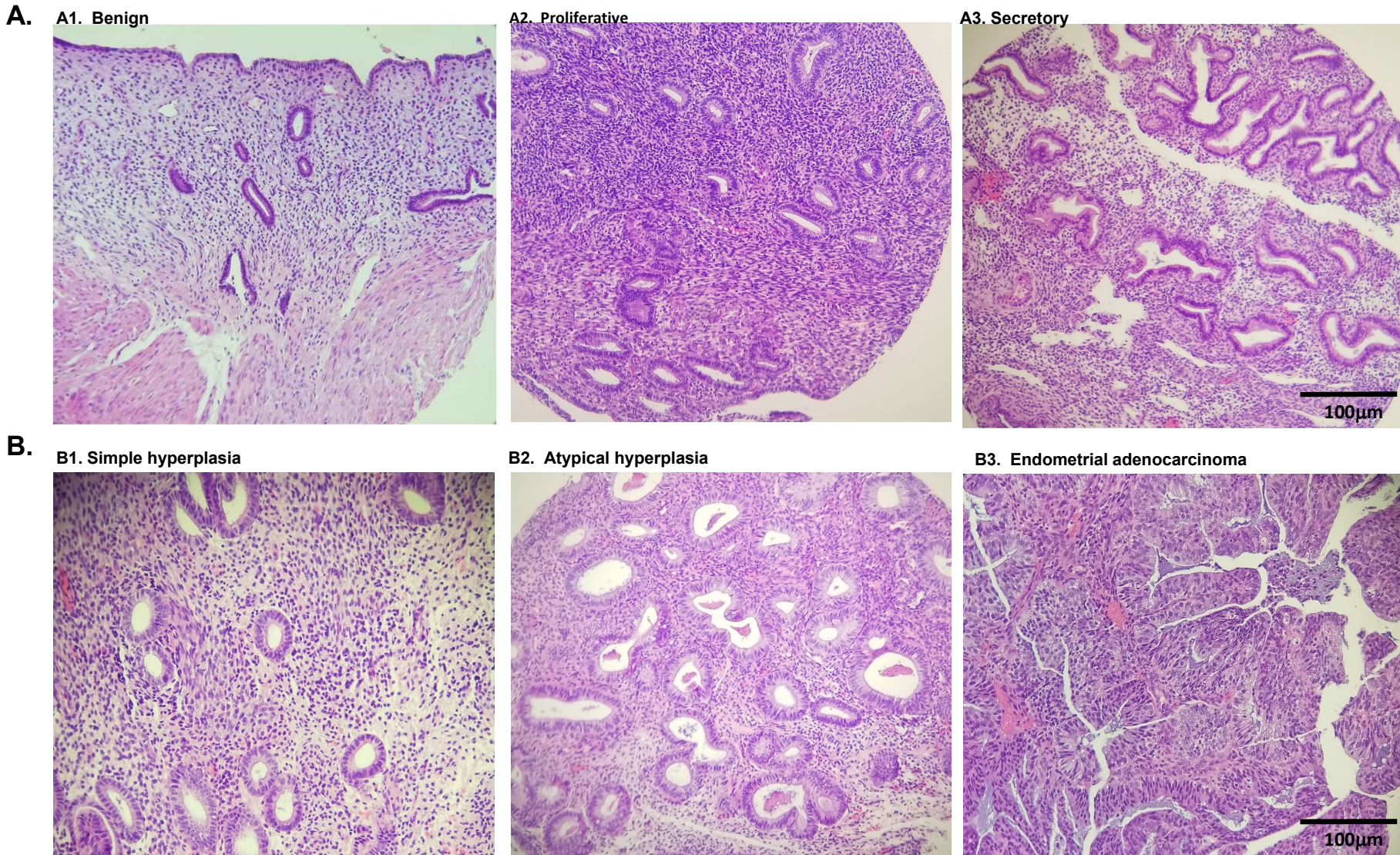
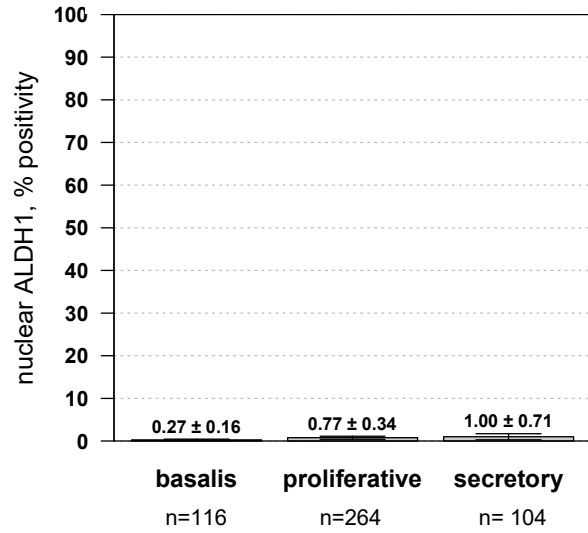


Fig S1. Progression to endometrial cancer histology. Hemotoxylin and eosin staining illustrates benign, premalignant and malignant endometrium. Magnification=200X.

A.

**Benign endometrium
nuclear ALDH1**



B.

Nuclear ALDH1 positivity by histology

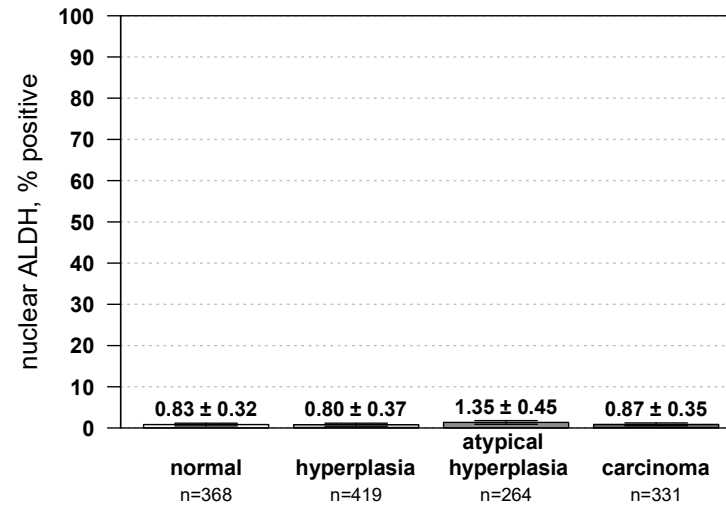


Fig S2. Nuclear expression of ALDH1. Low levels of ALDH1 were observed in benign or premalignant nuclei.