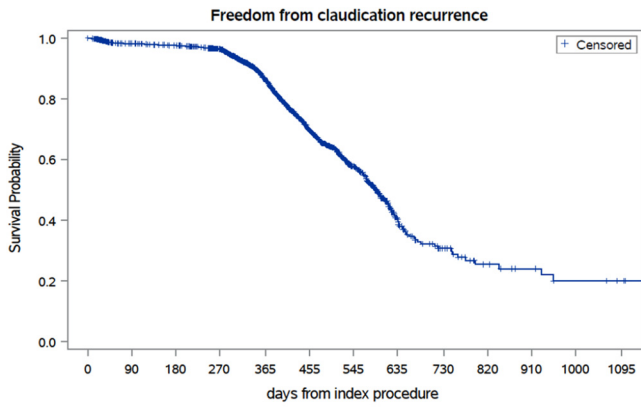


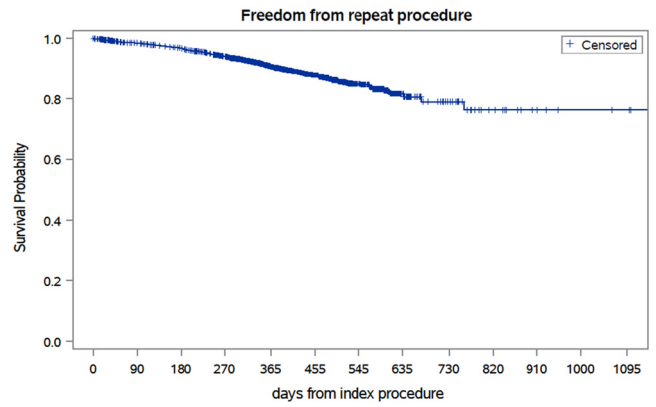
APPENDIX (online only).

Arteries treated in the cohort: 1 = aorta, 2 = common iliac, 3 = external iliac, 4 = superficial femoral, 5 = popliteal, 6 = anterior tibial, 7 = tibioperoneal trunk, 8 = posterior tibial, 9 = peroneal, 10 = common femoral, 11 = profunda. The number of arteries treated equals any

combination of these discrete arterial territories (eg, common iliac [no. 2] and superficial femoral [no. 4] equaled two arteries treated; popliteal [no. 6], anterior tibial [no. 7], and peroneal [no. 9] equaled three arteries treated).



Supplementary Fig 1 (online only). Kaplan-Meier estimates for freedom from intermittent claudication (IC) recurrence over time. Standard error did not exceed 10%.



Supplementary Fig 2 (online only). Kaplan-Meier estimates for freedom from repeat procedures over time. Standard error did not exceed 10%.

Supplementary Table I (online only). Type of endovascular treatment used

Endovascular treatment used	Patients, No. (%)
Angioplasty only	2673 (16.7)
Stent only	2874 (17.9)
Atherectomy only	78 (0.49)
Angioplasty and stent	8468 (52.8)
Angioplasty and atherectomy	1199 (7.5)
Stent and atherectomy	347 (2.2)
Angioplasty, stent, and atherectomy	397 (2.5)

Supplementary Table II (online only). Demographics and preoperative comorbidities for claudication patients undergoing endovascular procedures^a

Variable	Mean ± SD or No. (%)
Age, years	66 (10.4)
Gender	
Male	2810 (61)
Female	1797 (39)
Race	
White	4054 (88)
Black/other	553 (12)
Coronary artery disease	1152 (25)
Current smoking	2303 (50)
Diabetes	1705 (37)
Discharge without antiplatelet/statin	1244 (27)
Hypertension	3916 (85)
More than two arteries treated	645 (14)
Atherectomy used	438 (9.5)

SD, Standard deviation.

^aSensitivity analysis (long-term follow-up group).

Supplementary Table III (online only). Adjusted analysis for claudication recurrence^a

Finding	OR or HR	95% CI	P value
Logistic model results			
OR			
Smoking	1.05	0.89-1.25	.53
More than two arteries treated	1.21	0.98-1.51	.07
Atherectomy	1.00	0.77-1.29	.99
Antiplatelet/statin combined	0.81	0.68-0.97	.02
Survival model results			
HR			
Smoking	1.05	0.91-1.22	.46
More than two arteries treated	1.32	1.10-1.59	.02
Atherectomy	1.18	0.94-1.48	.13
Antiplatelet/statin combined	0.84	0.72-0.97	.02

CI, Confidence interval; HR, hazard ratio; OR, odds ratio.

^aSensitivity analysis (long-term follow-up group).

Supplementary Table IV (online only). Adjusted analysis for repeat procedures^a

Finding	OR or HR	95% CI	P value
Logistic model results			
OR			
Smoking	0.88	0.70-1.10	.27
More than two arteries treated	1.54	1.18-2.00	.001
Atherectomy	1.24	0.90-1.71	.18
Antiplatelet/statin combined	0.95	0.75-1.20	.69
Survival model results			
HR			
Smoking	0.88	0.71-1.09	.24
More than two arteries treated	1.61	1.26-2.06	.0001
Atherectomy	1.31	0.97-1.78	.07
Antiplatelet/statin combined	0.93	0.74-1.16	.52

CI, Confidence interval; HR, hazard ratio; OR, odds ratio.

^aSensitivity analysis (long-term follow-up group).