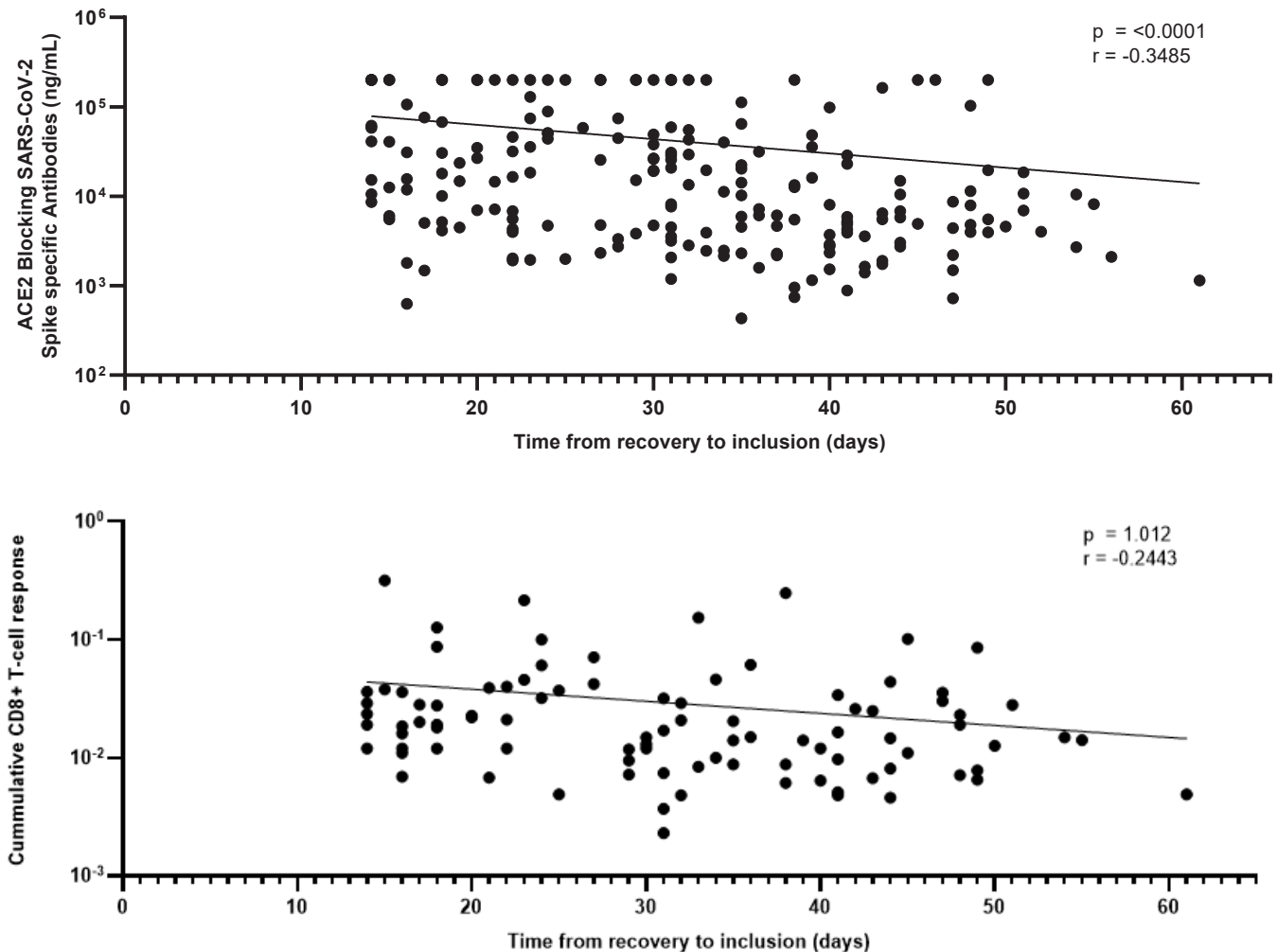


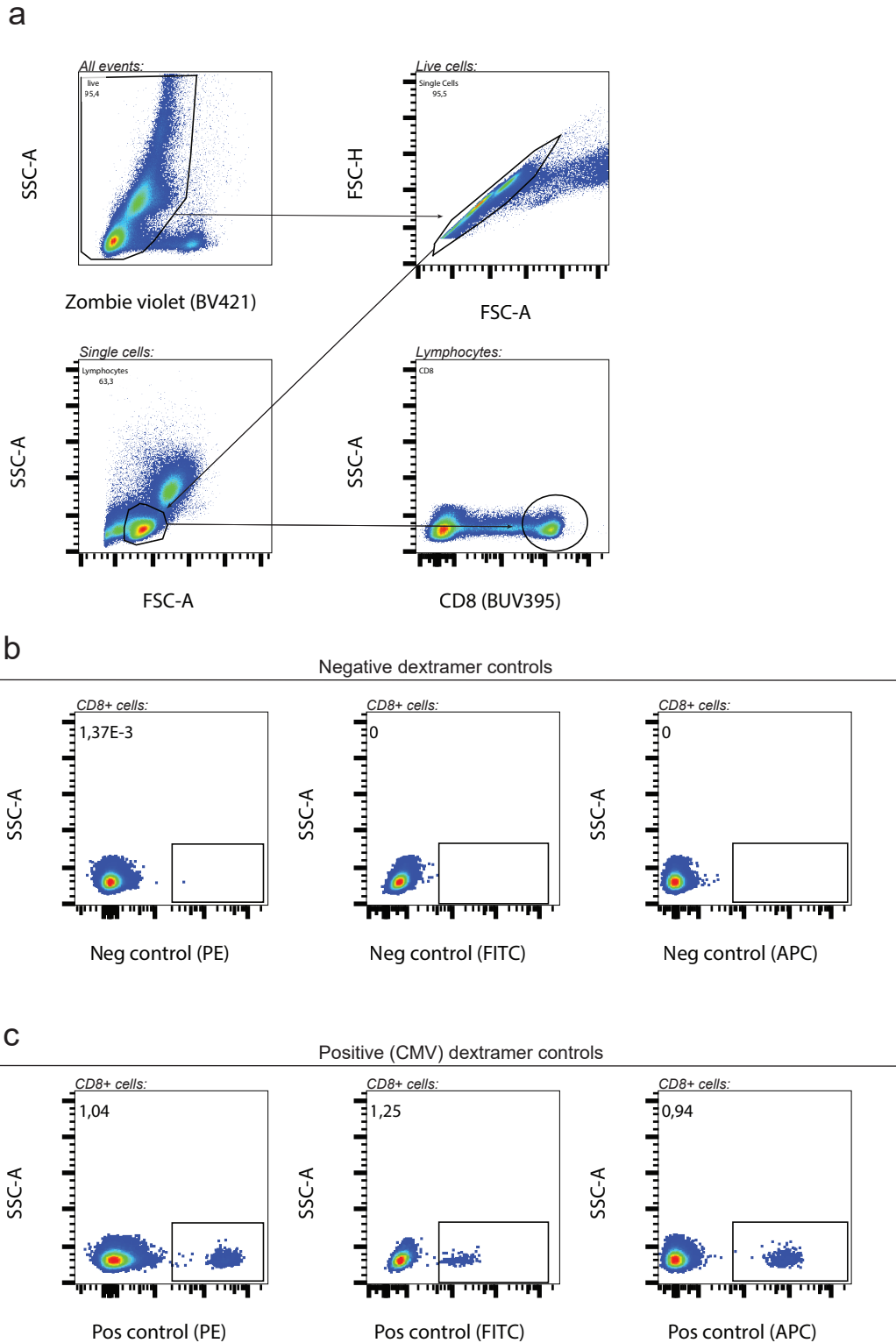
S1 Appendix

Overview: Page no.

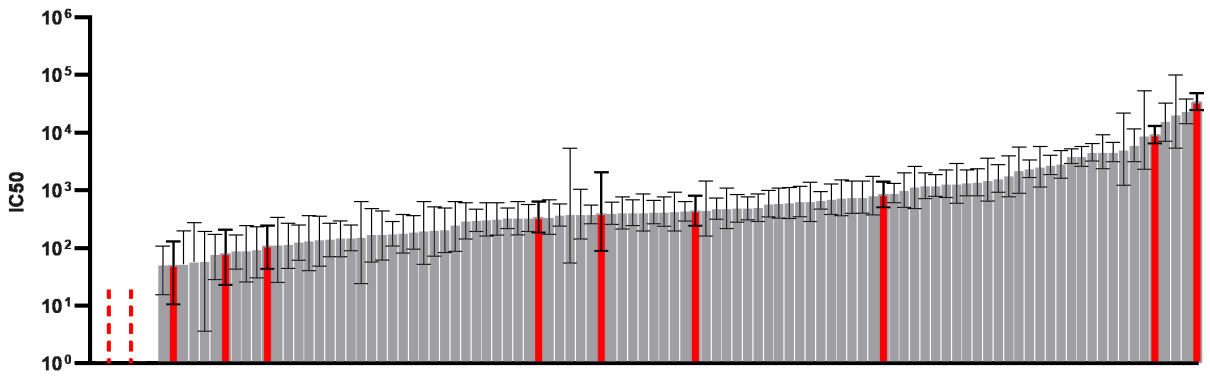
1. Figure 1: Time from recovery to inclusion correlates with antibody volume and cumulative CD8+ T-cell response
2. Figure 2: Full gating strategy for CD8+ T cell dextramer staining.
3. Figure 3: Distribution of non-CD8+ T-cell responders IC50 values within the cohort:



Appendix Figure 1: Time from recovery to inclusion correlates with antibody volume and cumulative CD8+ T-cell response. **A:** The time from recovery to inclusion in days (x) plotted against ACE2 Blocking SARS-CoV-2 Spike specific antibodies in ng/mL (y). Correlation by Spearman's rank coefficient, $p < 0.0001$. $n = 203$ **B:** Time from recovery to inclusion correlates the cumulative CD8+ T-cell response. The time from recovery to inclusion in days (x) plotted against cumulative CD8+ T-cell response in % (y). Correlation by Spearman's rank coefficient, $p = 0.012$. $n = 106$



Appendix Figure 2: Full gating strategy for CD8+ T cell dextramer staining. A) Gating strategy for the isolation of first live cell events, single cells, lymphocytes and finally CD8+ T cells. **B)** Negative control dextramer gates for PE, FITC and APC fluorophores. **C)** Positive control dextramer gates for PE, FITC and APC fluorophores.



Appendix Figure 3: Distribution of non-CD8+ T-cell responders IC50 values within the cohort: Listed IC50 values for all HLA-A2+ individuals, ranked from lowest to highest. Individuals without a detectable CD8+ T-cell response to any of the applied dextramer epitopes are shown in red. Six HLA-A2+ individuals were unable to neutralize pseudovirus 100 %, and have no IC50 values assigned. Two of them showed no detectable CD8+ T-cell response, and are schematically illustrated by red dotted lines.