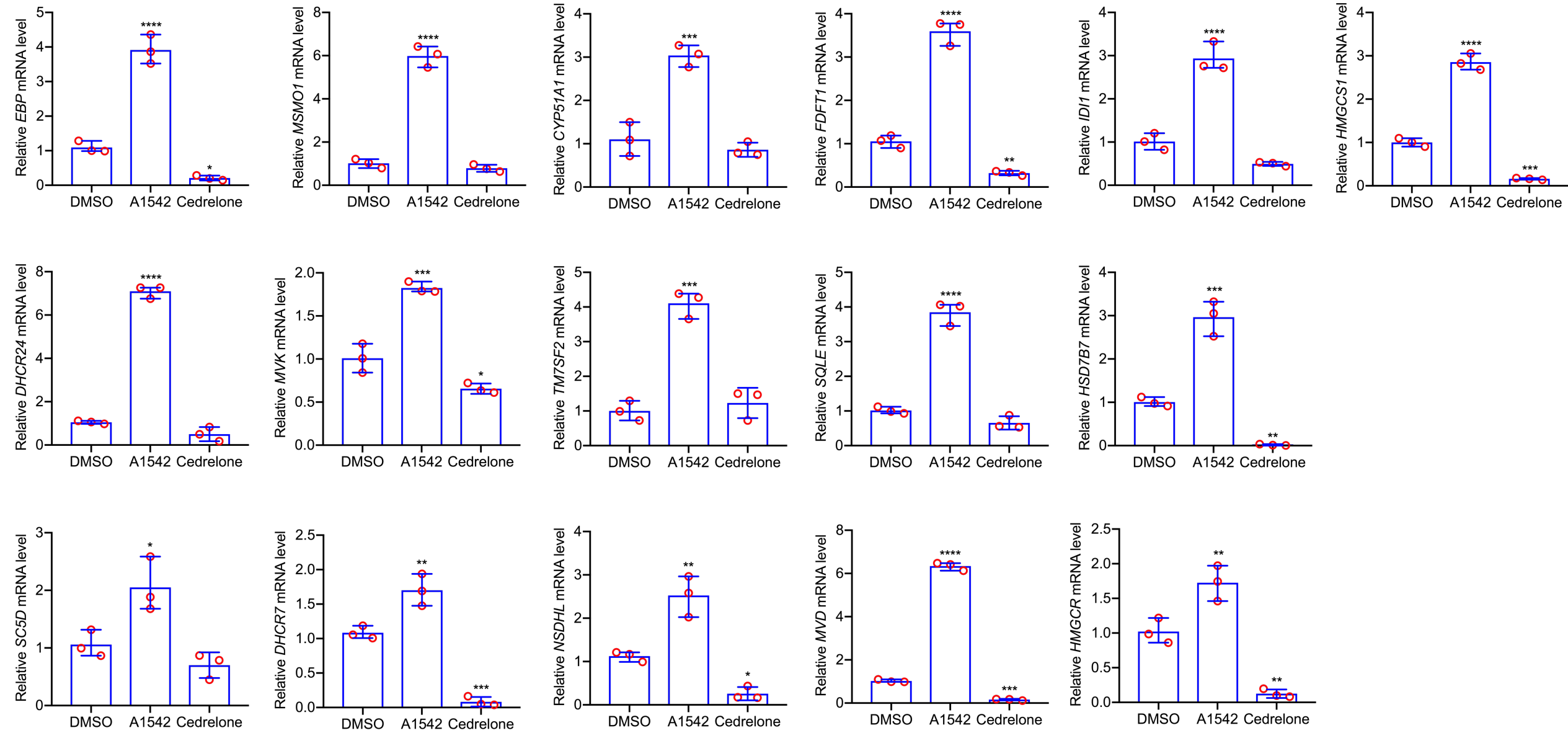
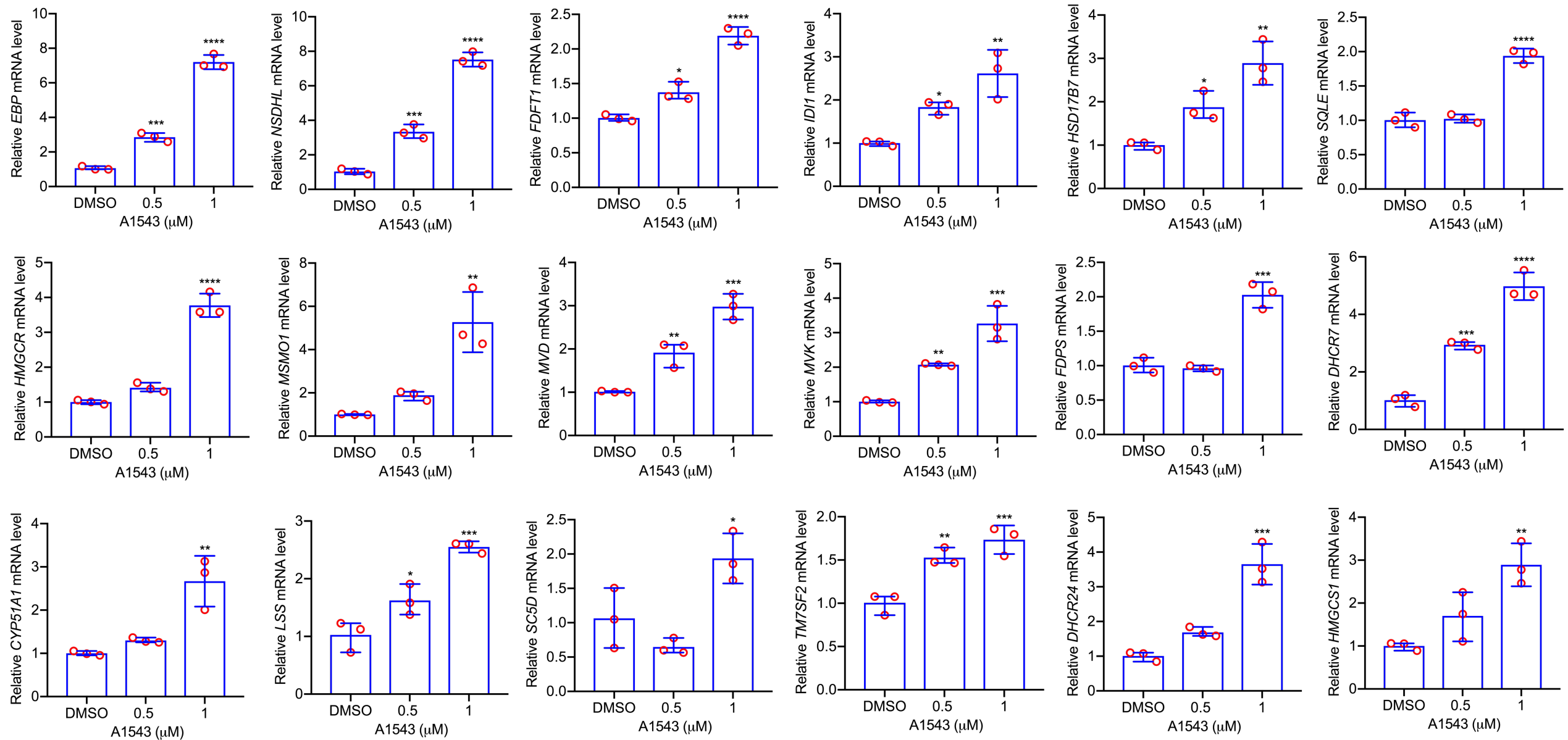


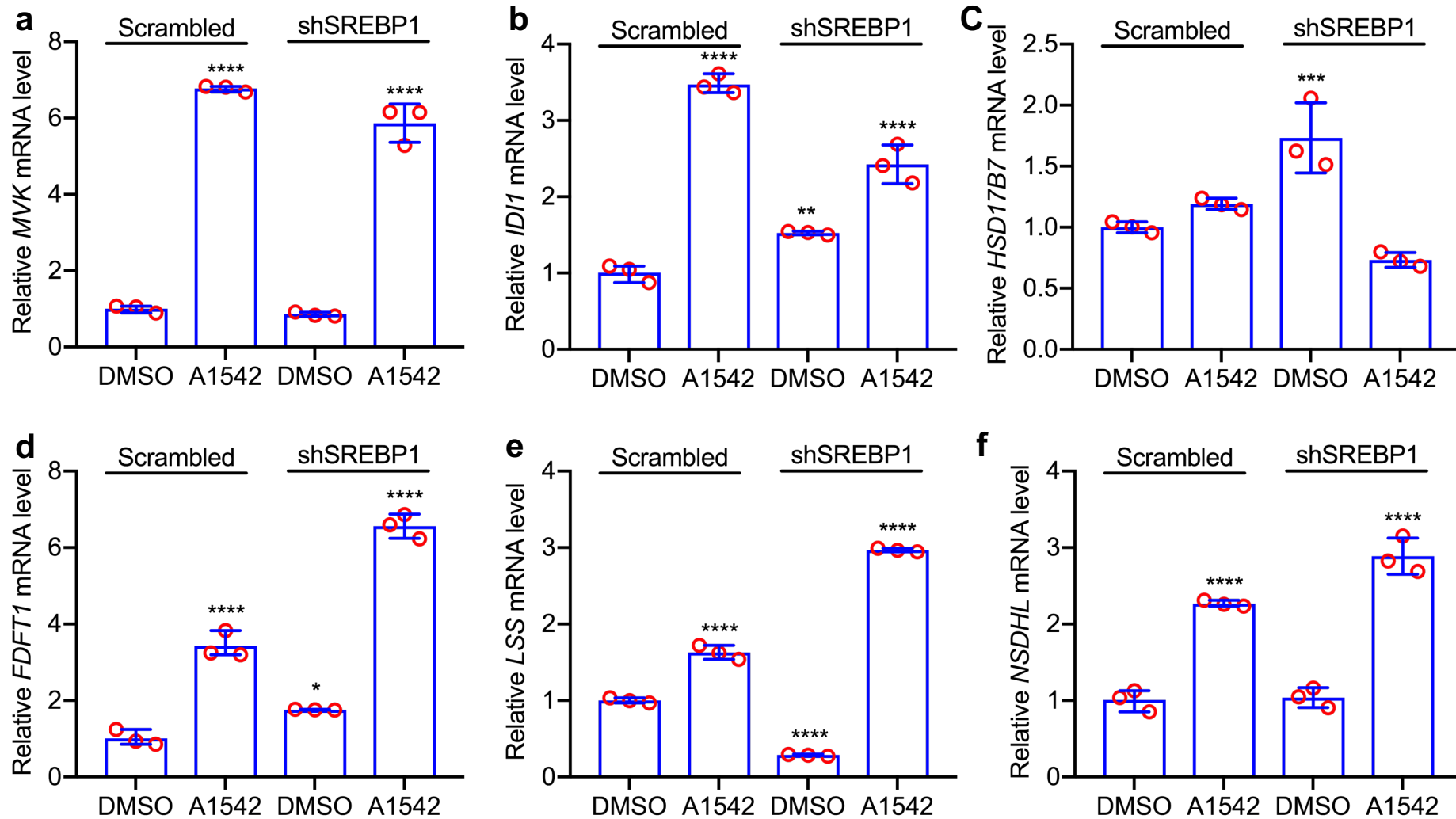
Additional Figure 1: Structure of A1541-A1543 and cedrelone compounds and their biological activity in culture.



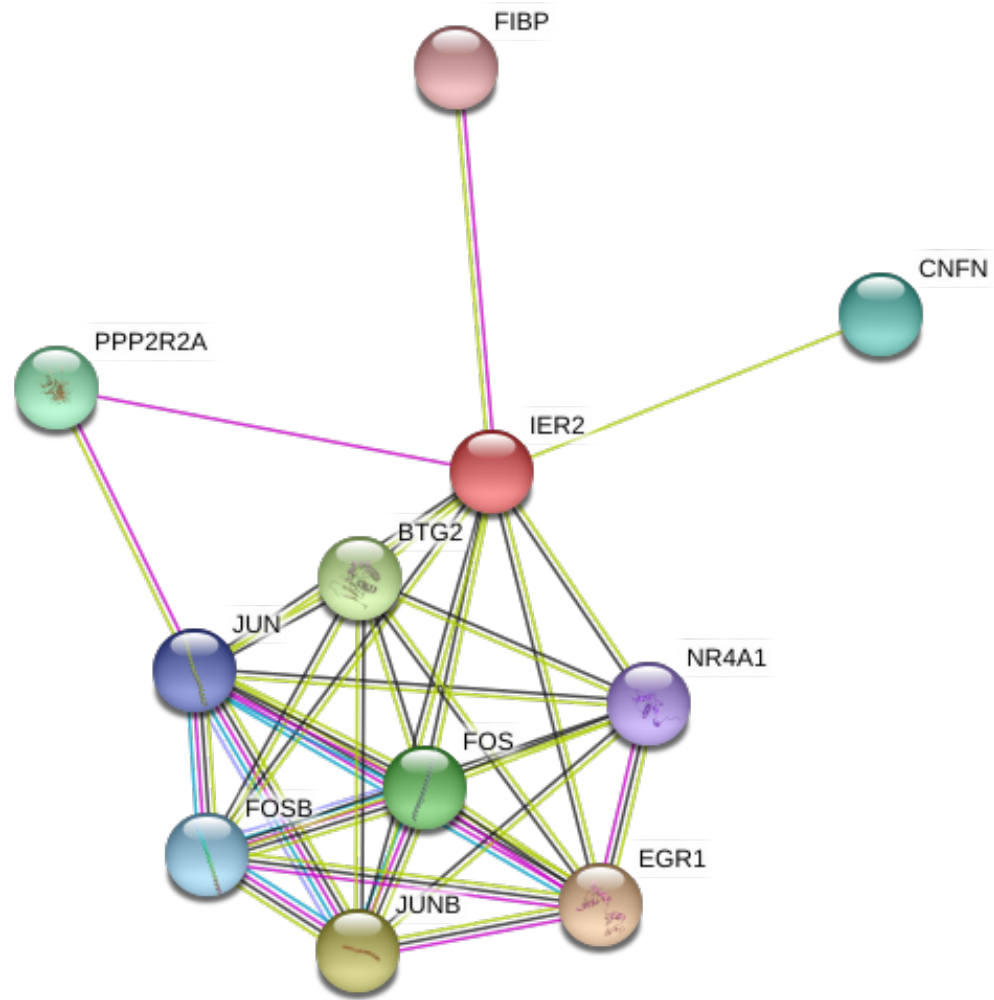
Additional Figure 2: Induction of the cholesterol biosynthesis genes by A1542. Q-RT-PCR analysis of expression of the indicated genes in HEL cells treated with DMSO or A1542 (1 μ M) for 24 h.



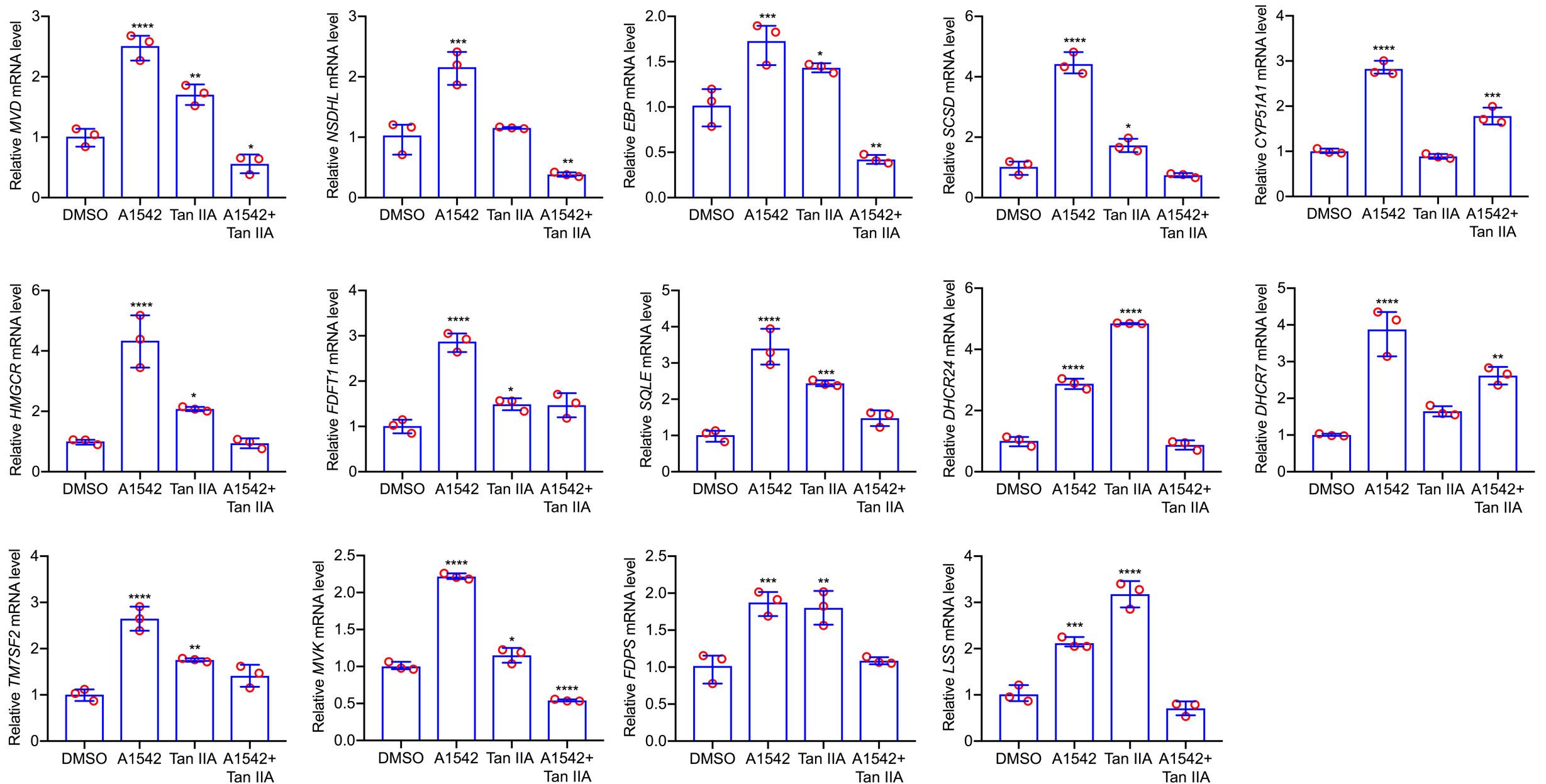
Additional Figure 3: Induction of the cholesterol biosynthesis genes by A1543. Q-RT-PCR analysis of expression of the indicated genes in HEL cells treated with DMSO or A1543 (1 μM) for 24 h.



Additional Figure 4: Induction of the cholesterol biosynthesis genes by A1542 in SREBP1 knockdown cells. **a-f** Expression of the indicated genes in HEL cells treated with DMSO or A1542 (1 μ M) for 24 h by Q-RT-PCR.



Additional Figure 5. Network map of genes interacts with EGR1 using STRING database.



Additional Figure 6: Suppression of the cholesterol biosynthesis genes induced by A1542 by AP1 inhibitor Tanshinone. Q-RT-PCR analysis of expression of the indicated genes in HEL cells treated with DMSO, A1542 (1 μM), Tanshinone (Tan IIA, 10 μM) and A1542+Tan IIA for 24 h.