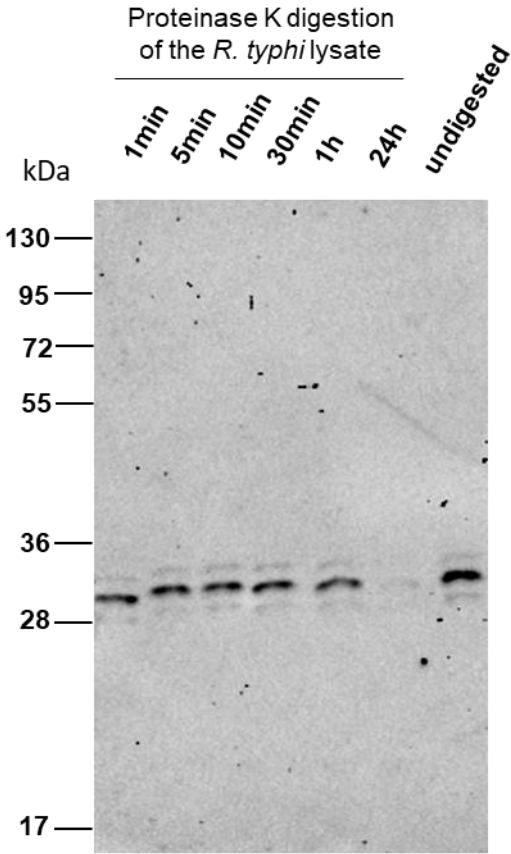


Original Image of Fig 3A.

Proteins in the lysate of *R. typhi* were digested with Proteinase K for indicated periods. Control bacterial lysate was left undigested. A Western Blot was performed. The membrane was incubated with the BNI52 antibody followed by the incubation with a HRP-labeled secondary antibody.



Original Images of Fig S2B.

Purified GroEL (1 μ g), OmpB p32 peptide (1 and 3 μ g) were applied to SDS Page and Western blotting. The membranes were incubated with BNI52 (left) or a polyhistidine antibody (right).

