

HDAC1 with marker

Human Primary Astrocyte Sample

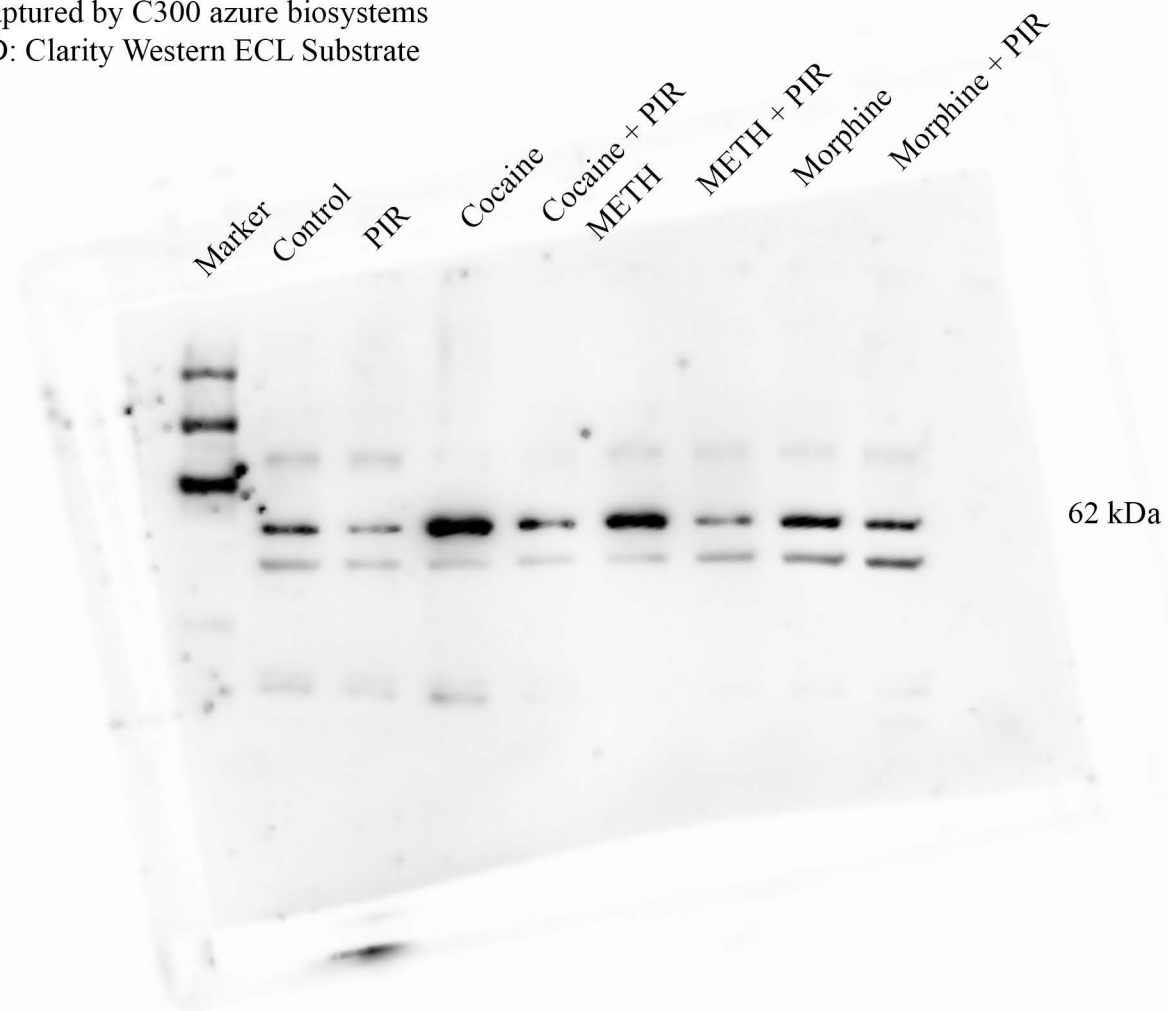
Fig. 1 A

Image captured by C300 azure biosystems

BIORAD: Clarity Western ECL Substrate

Primary Antibody dilution 1:1000

Secondary Antibody dilution 1:5000



GAPDH for HDAC 1
Human Primary Astrocyte Sample

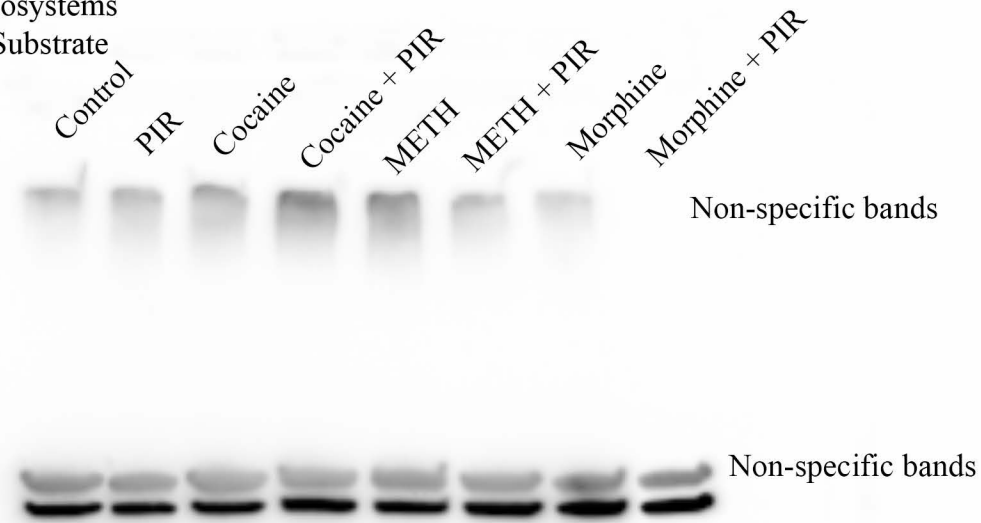
Fig. 1 A

Image captured by C300 azure biosystems

BIORAD: Clarity Western ECL Substrate

Primary Antibody dilution 1:1000

Secondary Antibody dilution 1:5000



HDAC2 with marker

Human Primary Astrocyte Sample

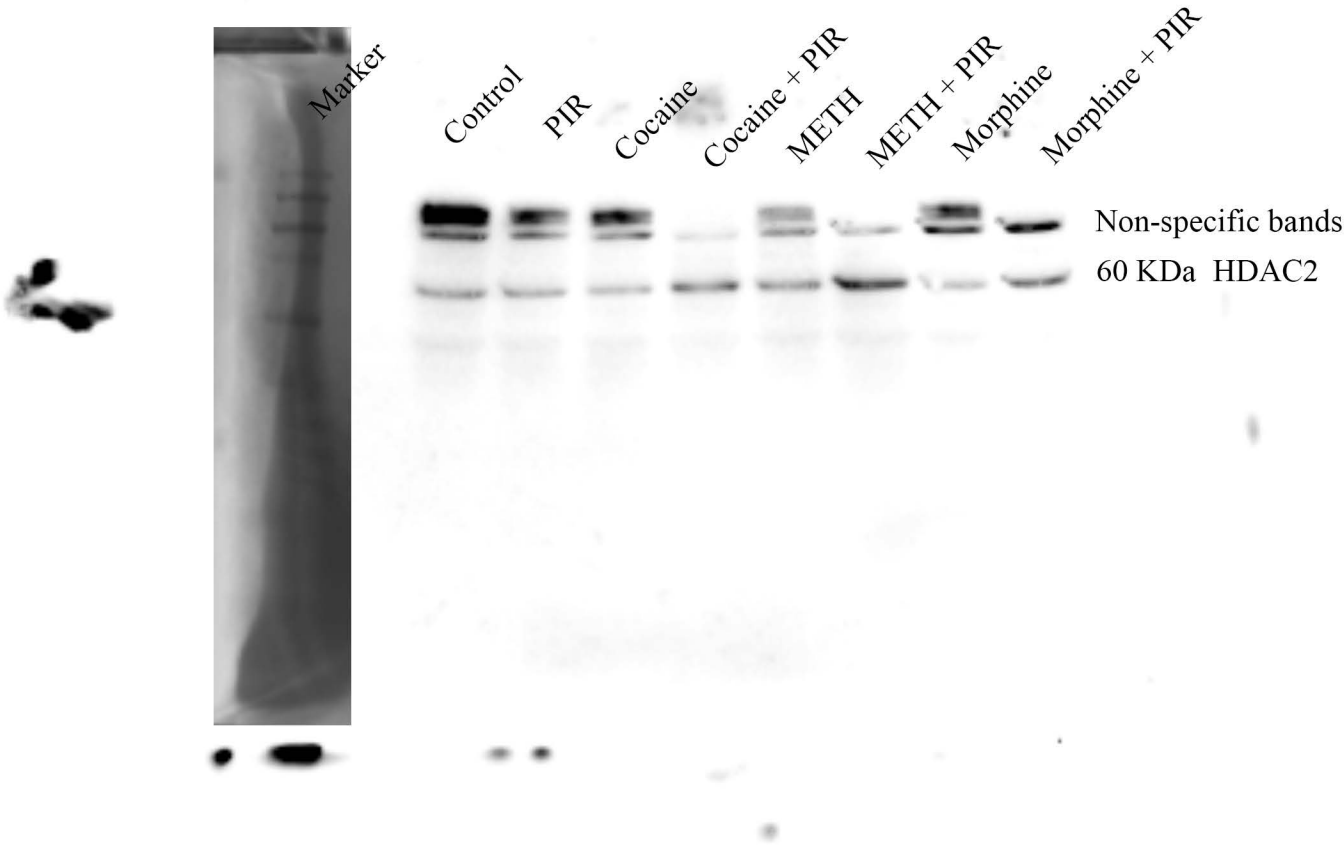
Primary Antibody dilution 1:1000

Fig. 1 B

Secondary Antibody dilution 1:5000

Image captured by C300 azure biosystems

BIORAD: Clarity Western ECL Substrate



GAPDH for HDAC 2

Human Primary Astrocyte Sample

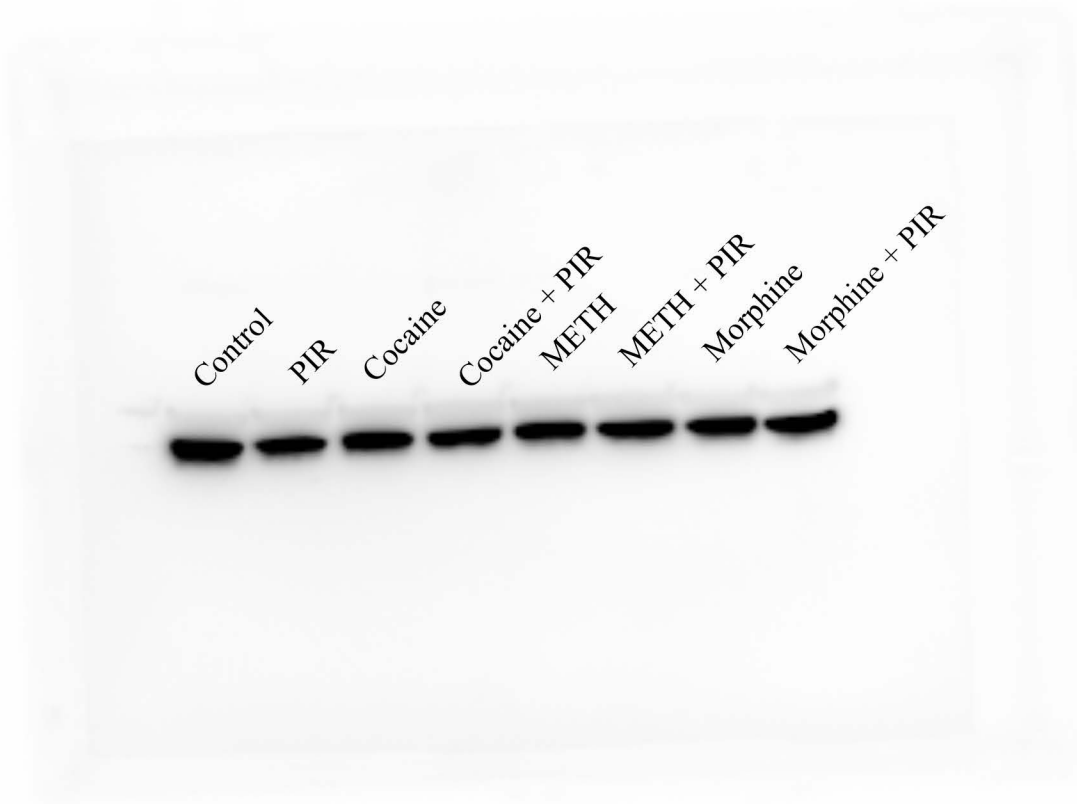
Primary Antibody dilution 1:1000

Fig. 1 B

Secondary Antibody dilution 1:5000

Image captured by C300 azure biosystems

BIORAD: Clarity Western ECL Substrate



HDAC 3

Human Primary Astrocyte Sample

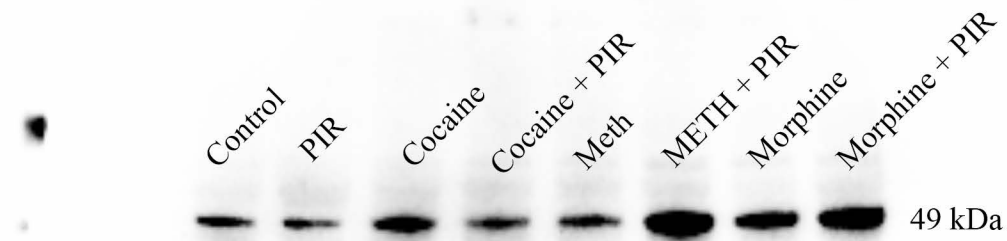
Primary Antibody dilution 1:1000

Fig. 1 C

Secondary Antibody dilution 1:5000

Image captured by C300 azure biosystems

BIORAD: Clarity Western ECL Substrate



HDAC3 with marker

Human Primary Astrocyte Sample

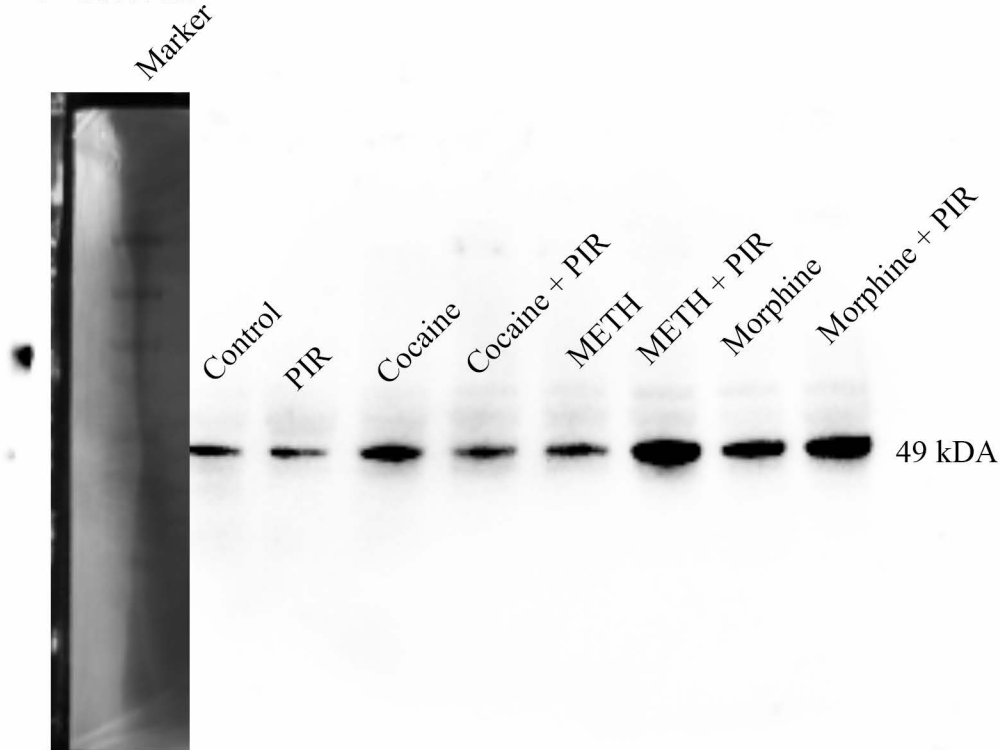
Primary Antibody dilution 1:1000

Fig. 1 C

Secondary Antibody dilution 1:5000

Image captured by C300 azure biosystems

BIORAD: Clarity Western ECL Substrate



GAPDH for HDAC3

Human Primary Astrocyte Sample

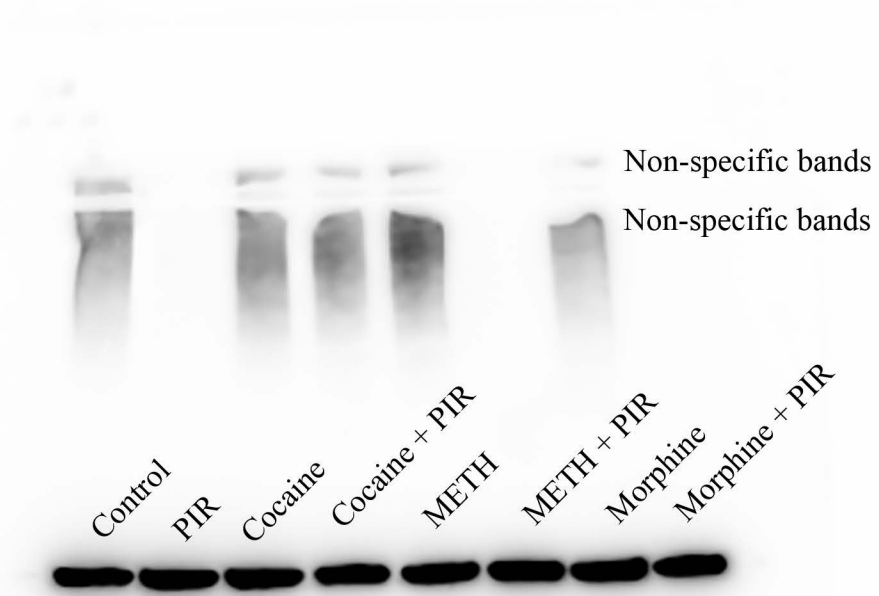
Primary Antibody dilution 1:1000

Fig. 1 C

Secondary Antibody dilution 1:5000

Image captured by C300 azure biosystems

BIORAD: Clarity Western ECL Substrate



HDAC 4

Human Primary Astrocyte Sample

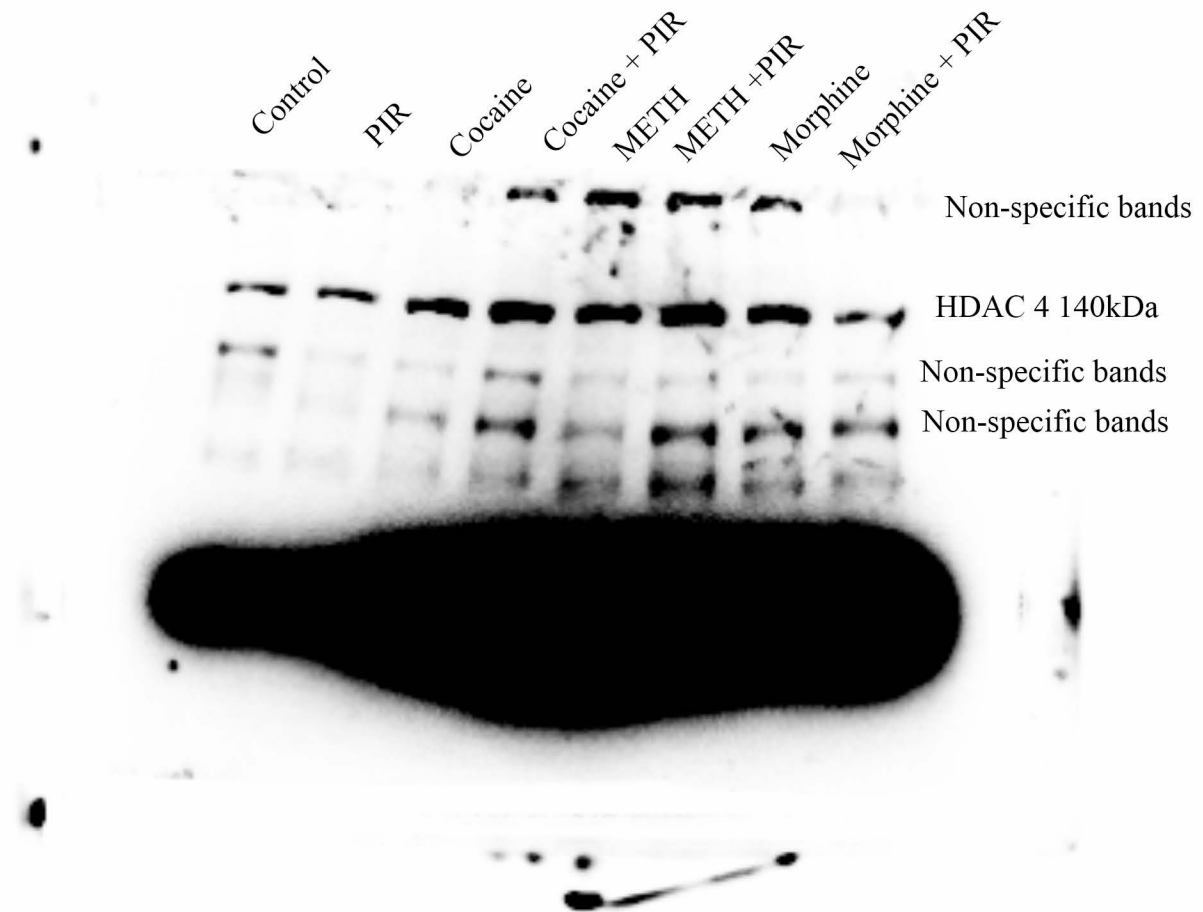
Primary Antibody dilution 1:1000

Fig. 2 A

Secondary Antibody dilution 1:5000

Image captured by C300 azure biosystems

BIORAD: Clarity Western ECL Substrate



HDAC 4 with marker

Human Primary Astrocyte Sample

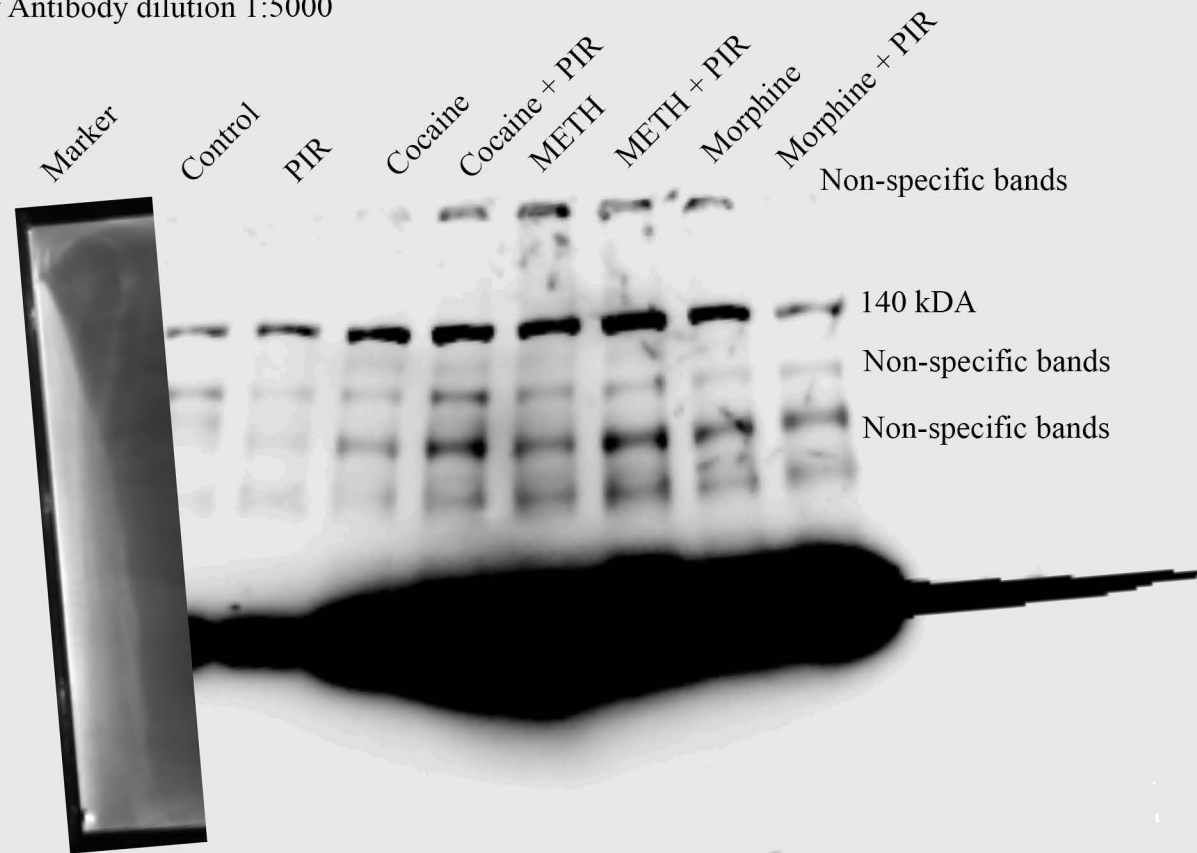
Primary Antibody dilution 1:1000

Fig. 2 A

Secondary Antibody dilution 1:5000

Image captured by C300 azure biosystems

BIORAD: Clarity Western ECL Substrate



GAPDH for HDAC 4

Human Primary Astrocyte Sample

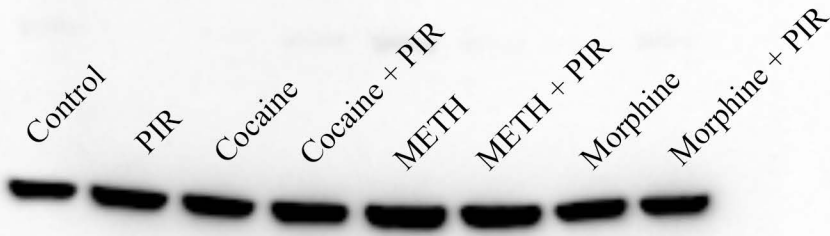
Primary Antibody dilution 1:1000

Fig. 2 A

Secondary Antibody dilution 1:5000

Image captured by C300 azure biosystems

BIORAD: Clarity Western ECL Substrate



HDAC 5

Human Primary Astrocyte Sample

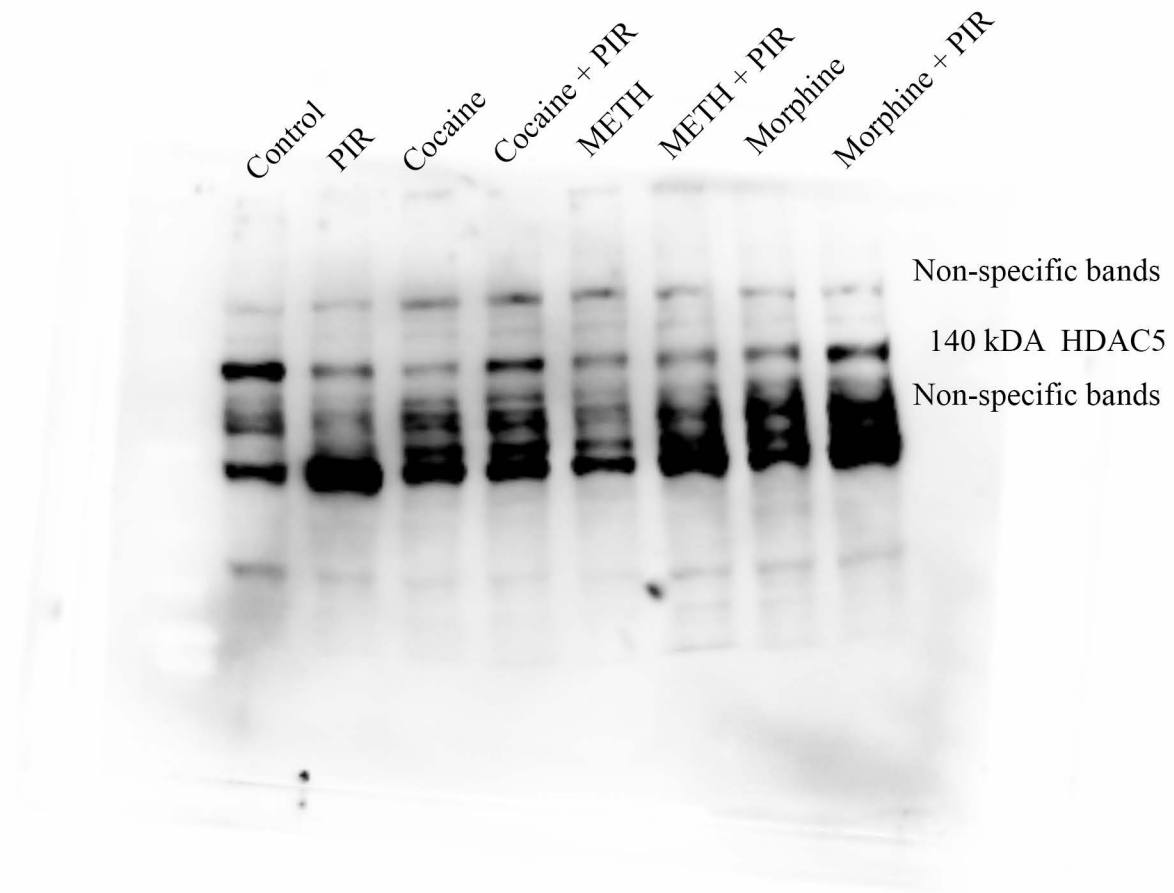
Primary Antibody dilution 1:1000

Fig. 2 B

Secondary Antibody dilution 1:5000

Image captured by C300 azure biosystems

BIORAD: Clarity Western ECL Substrate



HDAC5 with marker

Human Primary Astrocyte Sample

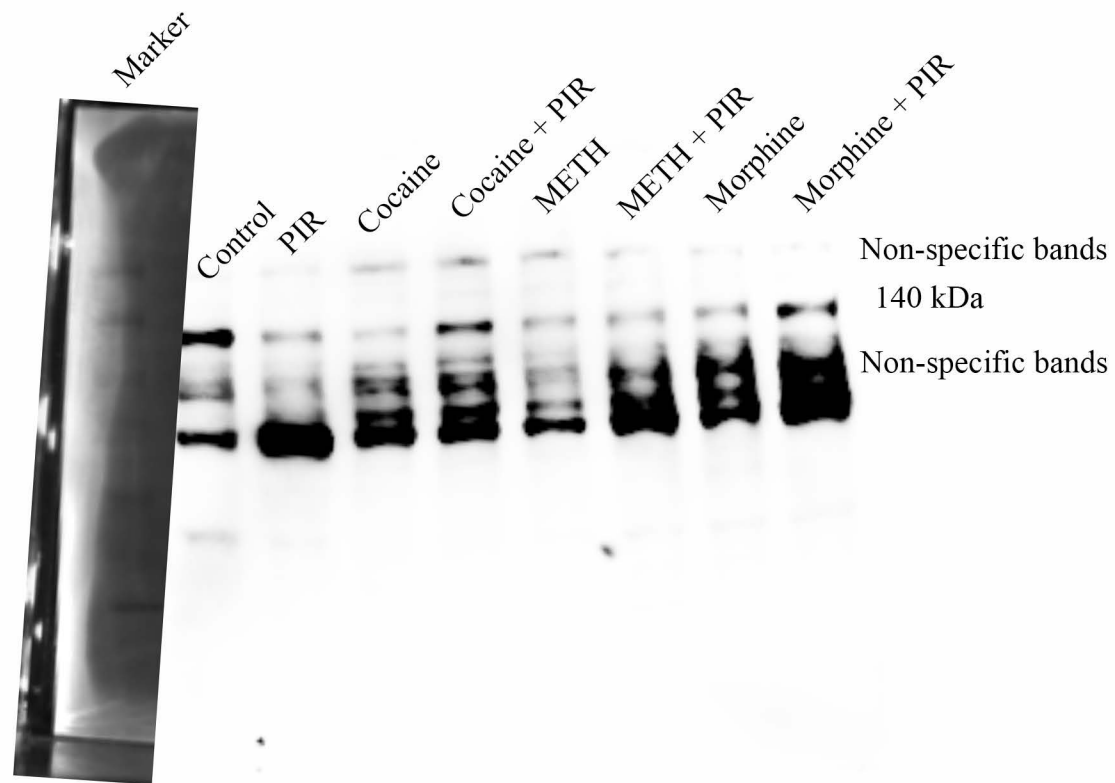
Primary Antibody dilution 1:1000

Fig. 2 B

Secondary Antibody dilution 1:5000

Image captured by C300 azure biosystems

BIORAD: Clarity Western ECL Substrate



GAPDH for HDAC 5

Human Primary Astrocyte Sample

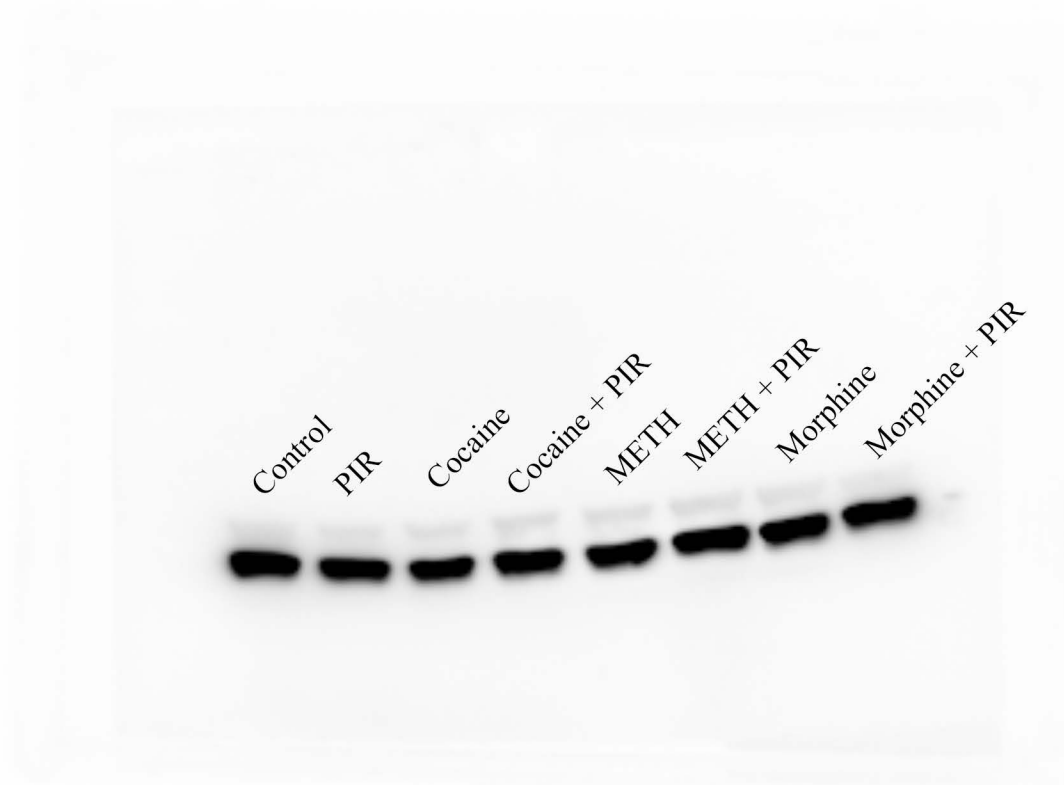
Primary Antibody dilution 1:1000

Fig. 2 B

Secondary Antibody dilution 1:5000

Image captured by C300 azure biosystems

BIORAD: Clarity Western ECL Substrate



HDAC 6

Human Primary Astrocyte Sample

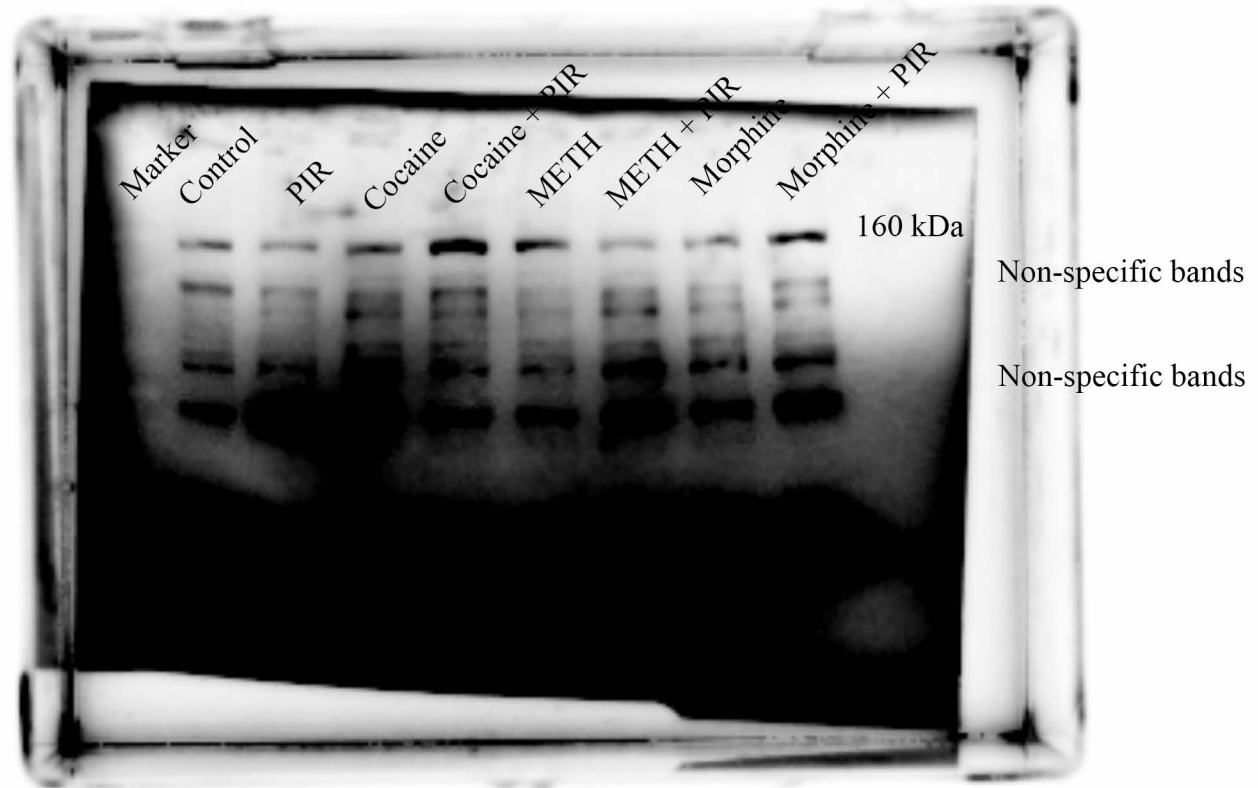
Primary Antibody dilution 1:1000

Fig. 2 C

Secondary Antibody dilution 1:5000

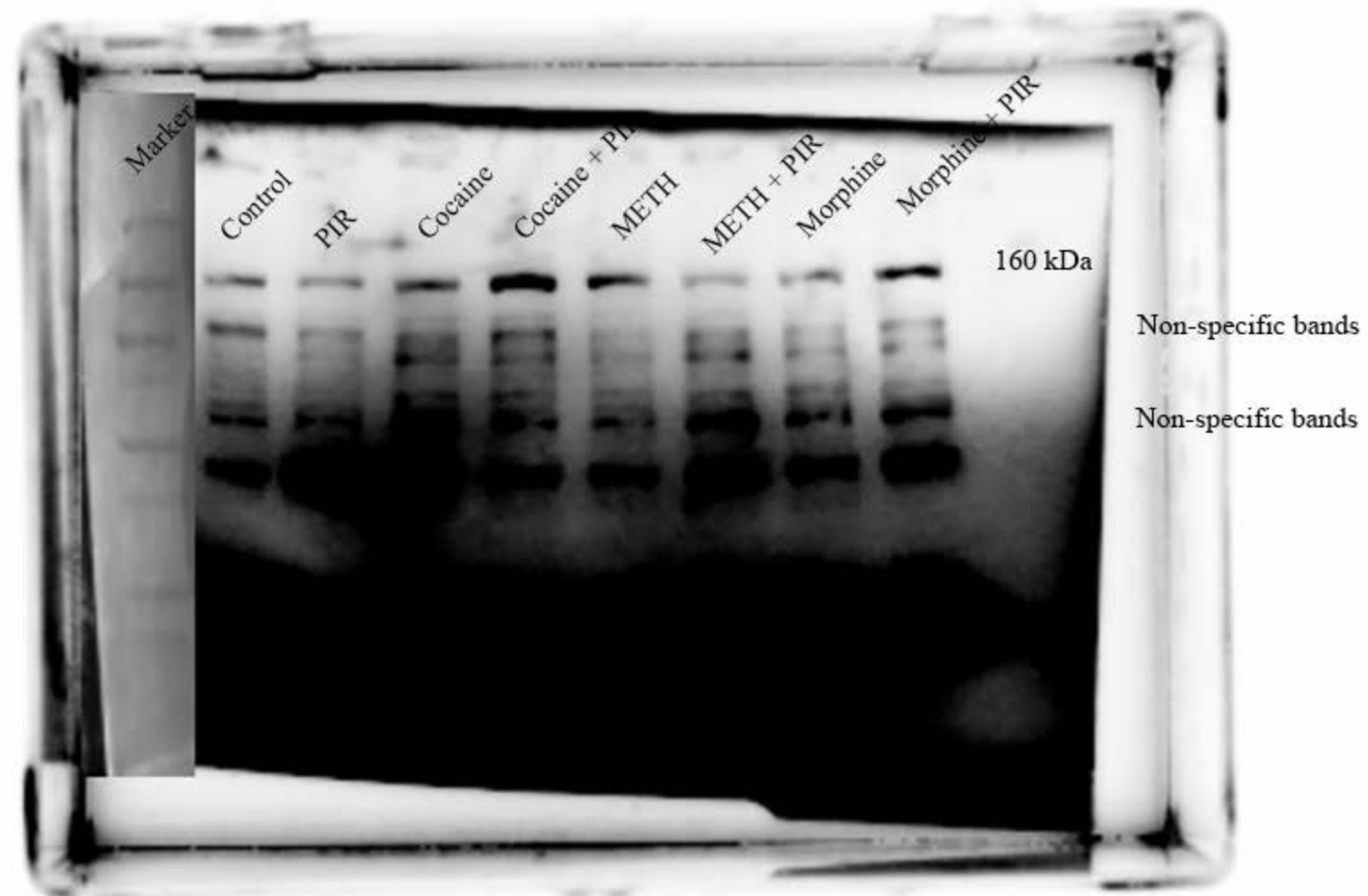
Image captured by C300 azure biosystems

BIORAD: Clarity Western ECL Substrate



HDAC6 with marker
Human Primary Astrocyte Sample
Fig. 2 C
Image captured by C300 azure biosystems
BIORAD: Clarity Western ECL Substrate

Primary Antibody dilution 1:1000
Secondary Antibody dilution 1:5000



GAPDH for HDAC 6

Human Primary Astrocyte Sample

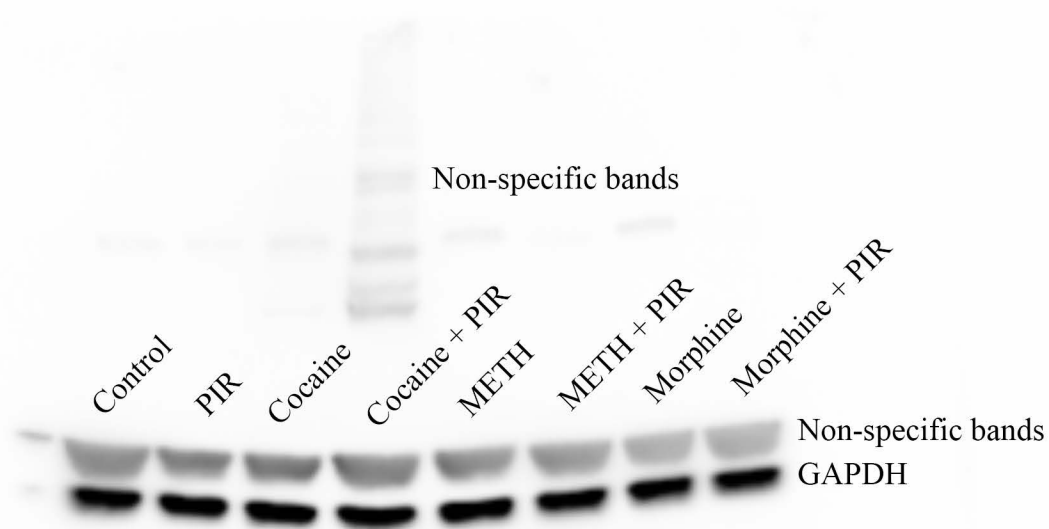
Primary Antibody dilution 1:1000

Fig. 2 C

Secondary Antibody dilution 1:5000

Image captured by C300 azure biosystems

BIORAD: Clarity Western ECL Substrate



HDAC 7

Human Primary Astrocyte Sample

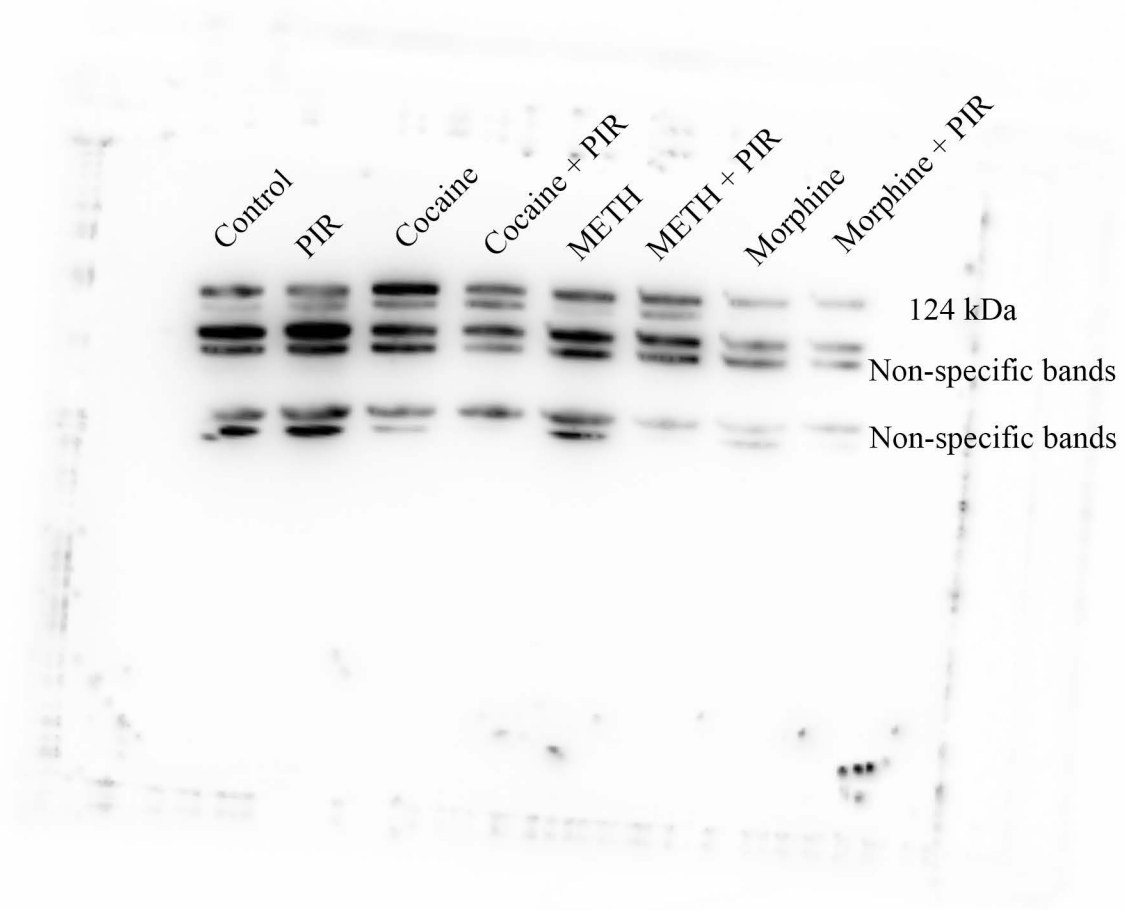
Primary Antibody dilution 1:1000

Fig. 2 D

Secondary Antibody dilution 1:5000

Image captured by C300 azure biosystems

BIORAD: Clarity Western ECL Substrate



HDAC 7 with marker

Human Primary Astrocyte Sample

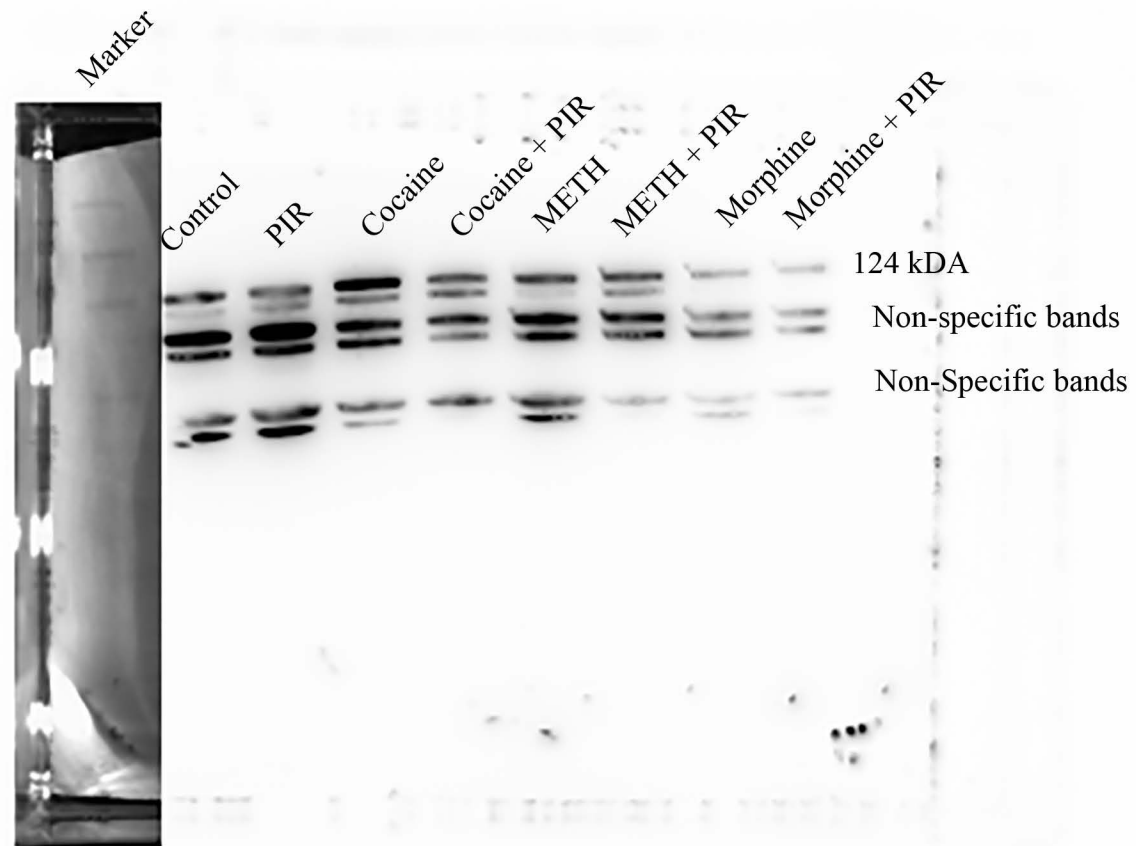
Primary Antibody dilution 1:1000

Fig. 2 D

Secondary Antibody dilution 1:5000

Image captured by C300 azure biosystems

BIORAD: Clarity Western ECL Substrate



GAPDH for HDAC 7

Human Primary Astrocyte Sample

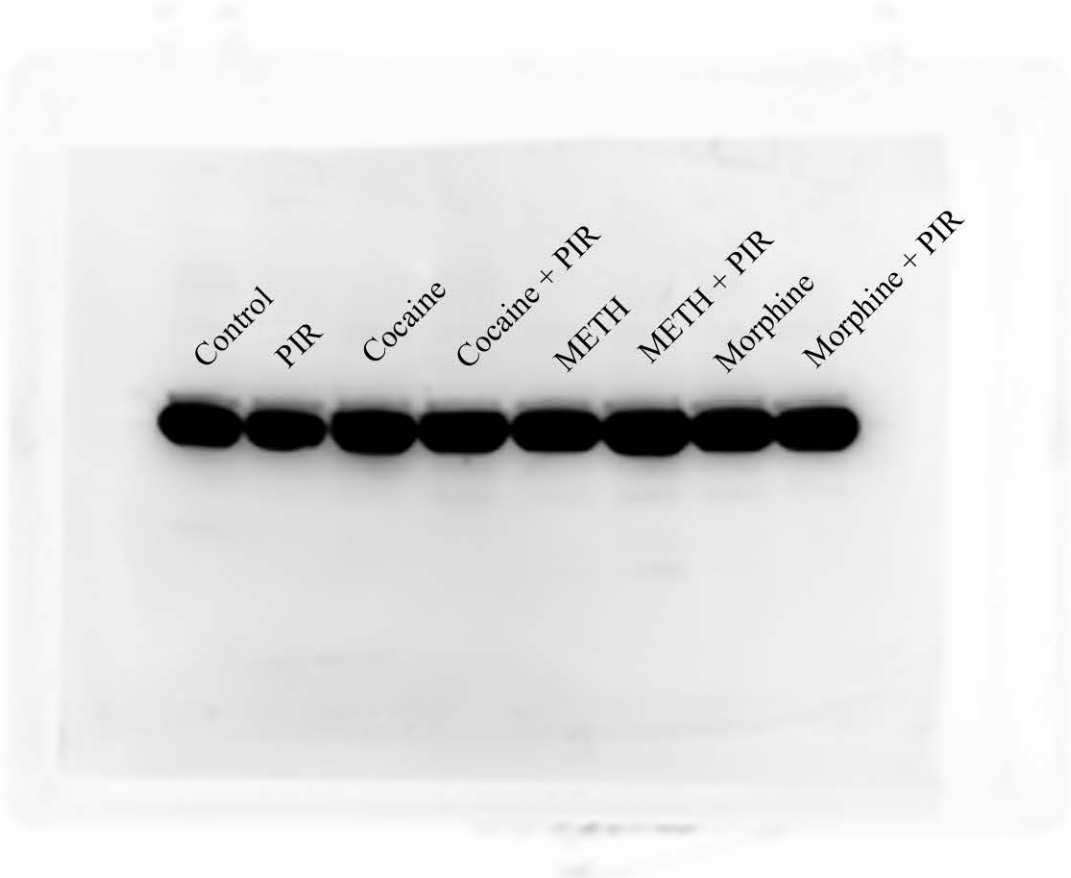
Primary Antibody dilution 1:1000

Fig. 2 D

Secondary Antibody dilution 1:5000

Image captured by C300 azure biosystems

BIORAD: Clarity Western ECL Substrate



PCAF

Human Primary Astrocyte Sample

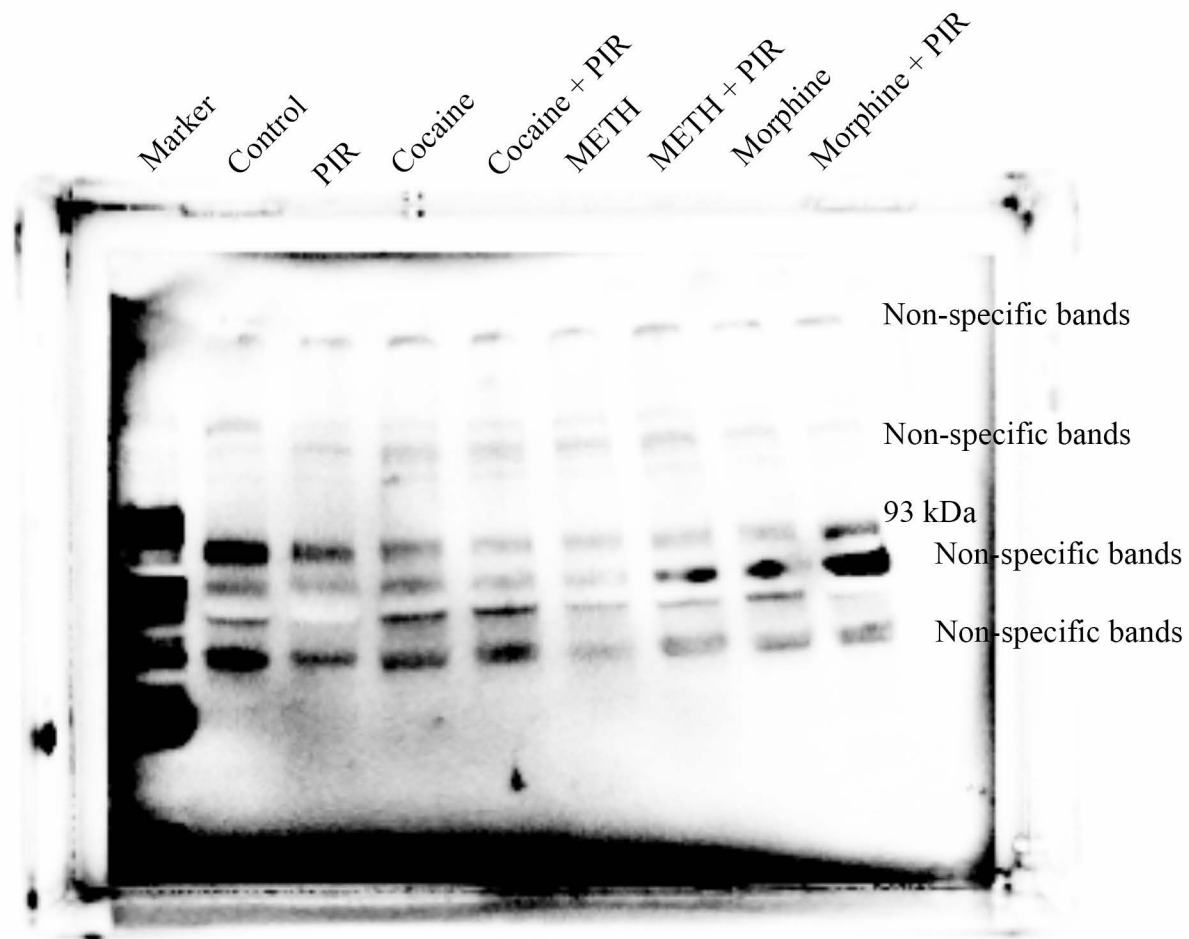
Primary Antibody dilution 1:1000

Fig. 3 A

Secondary Antibody dilution 1:5000

Image captured by C300 azure biosystems

BIORAD: Clarity Western ECL Substrate



PCAF with marker

Human Primary Astrocyte Sample

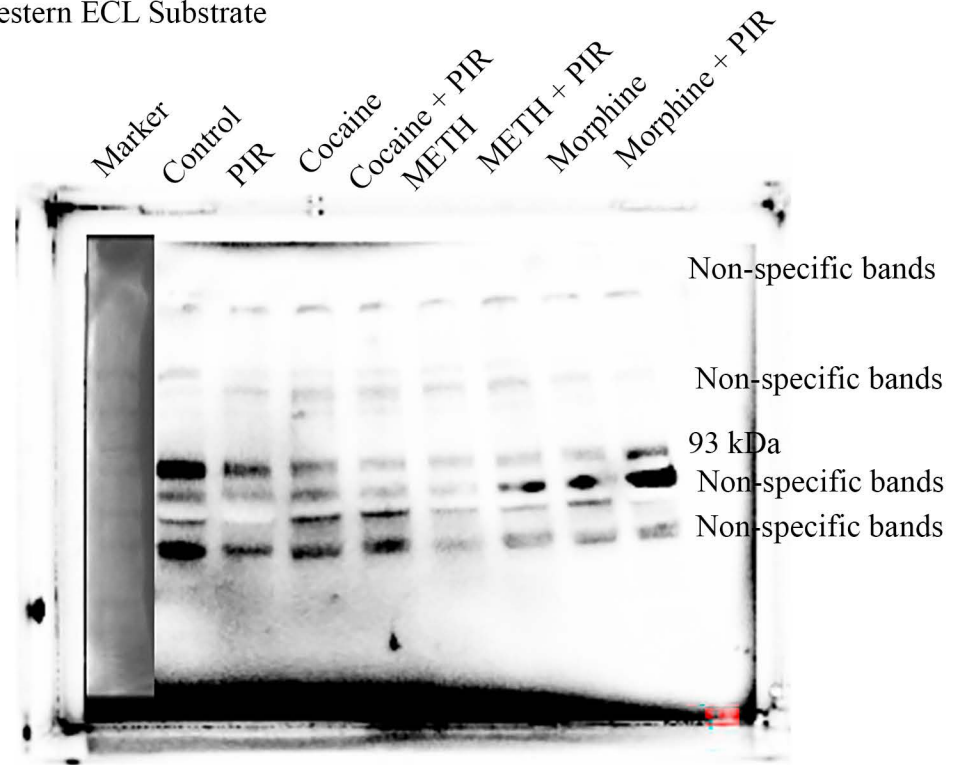
Primary Antibody dilution 1:1000

Fig. 3 A

Secondary Antibody dilution 1:5000

Image captured by C300 azure biosystems

BIORAD: Clarity Western ECL Substrate



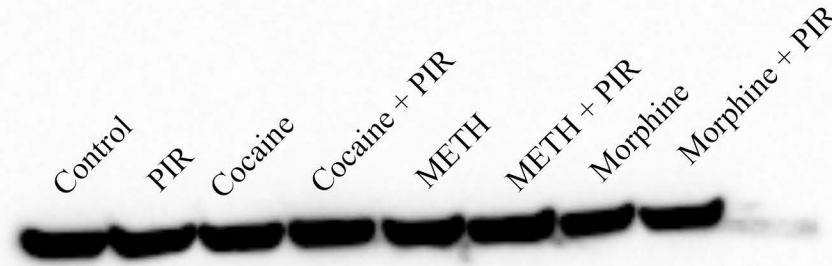
GAPDH for PCAF

Human Primary Astrocyte Sample

Fig. 3 A

Image captured by C300 azure biosystems

BIORAD: Clarity Western ECL Substrate



P300

Human Primary Astrocyte Sample

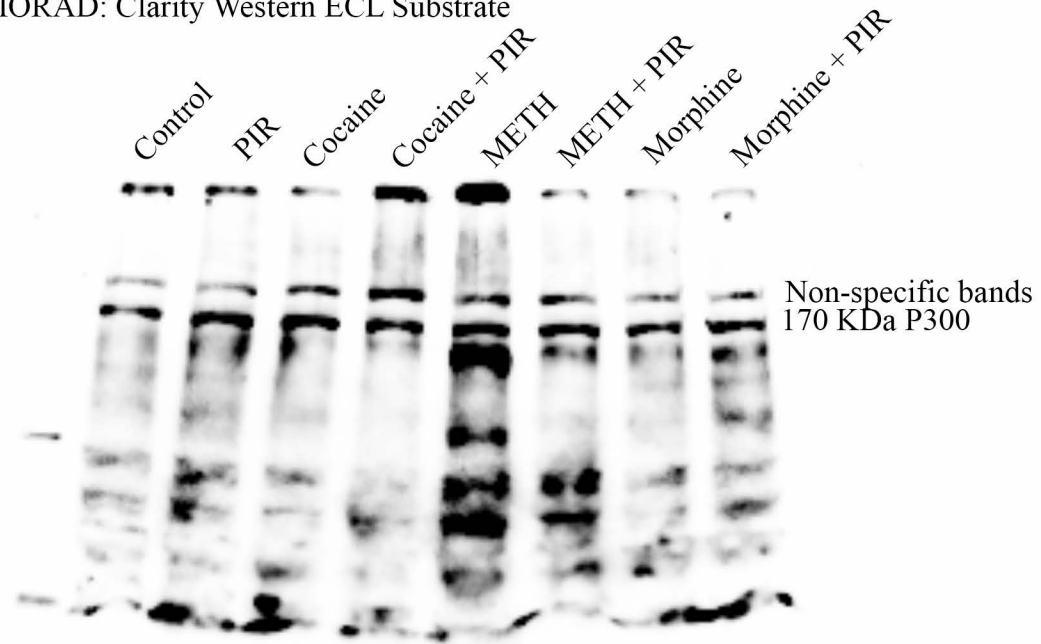
Primary Antibody dilution 1:1000

Fig. 3 B

Secondary Antibody dilution 1:5000

Image captured by C300 azure biosystems

BIORAD: Clarity Western ECL Substrate



P300 with marker

Human Primary Astrocyte Sample

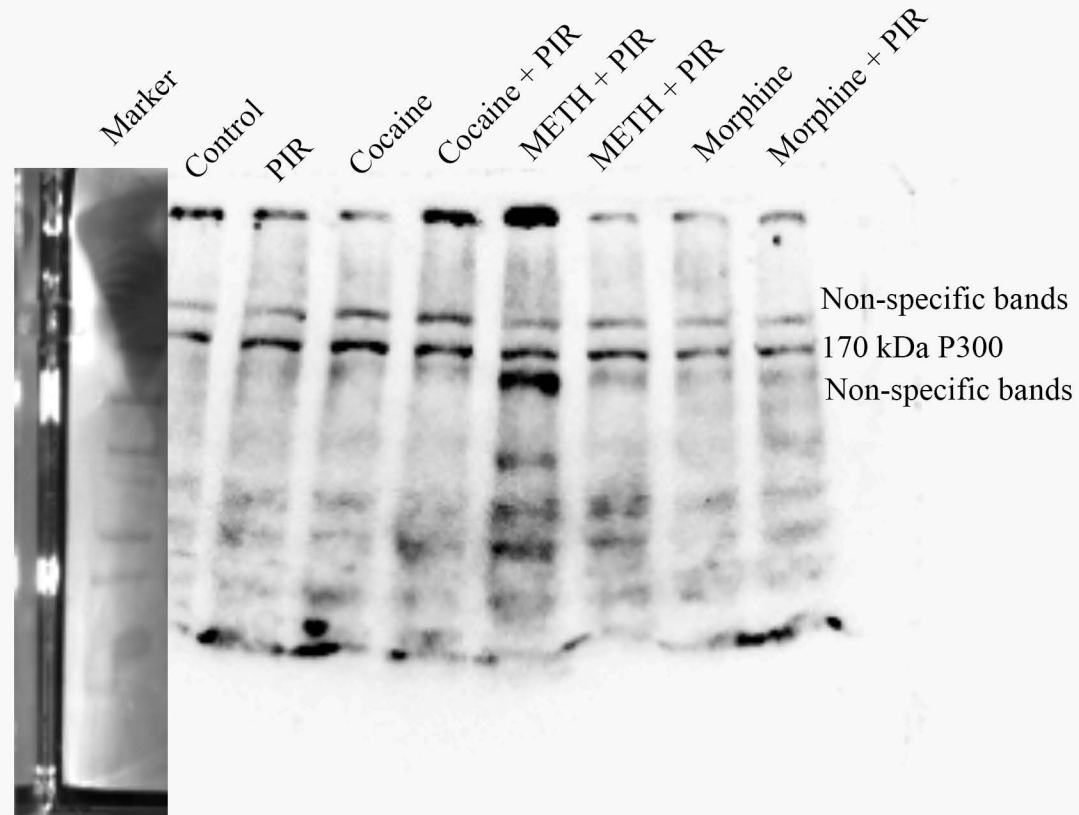
Primary Antibody dilution 1:1000

Fig. 3 B

Secondary Antibody dilution 1:5000

Image captured by C300 azure biosystems

BIORAD: Clarity Western ECL Substrate



GAPDH for P300

Human Primary Astrocyte Sample

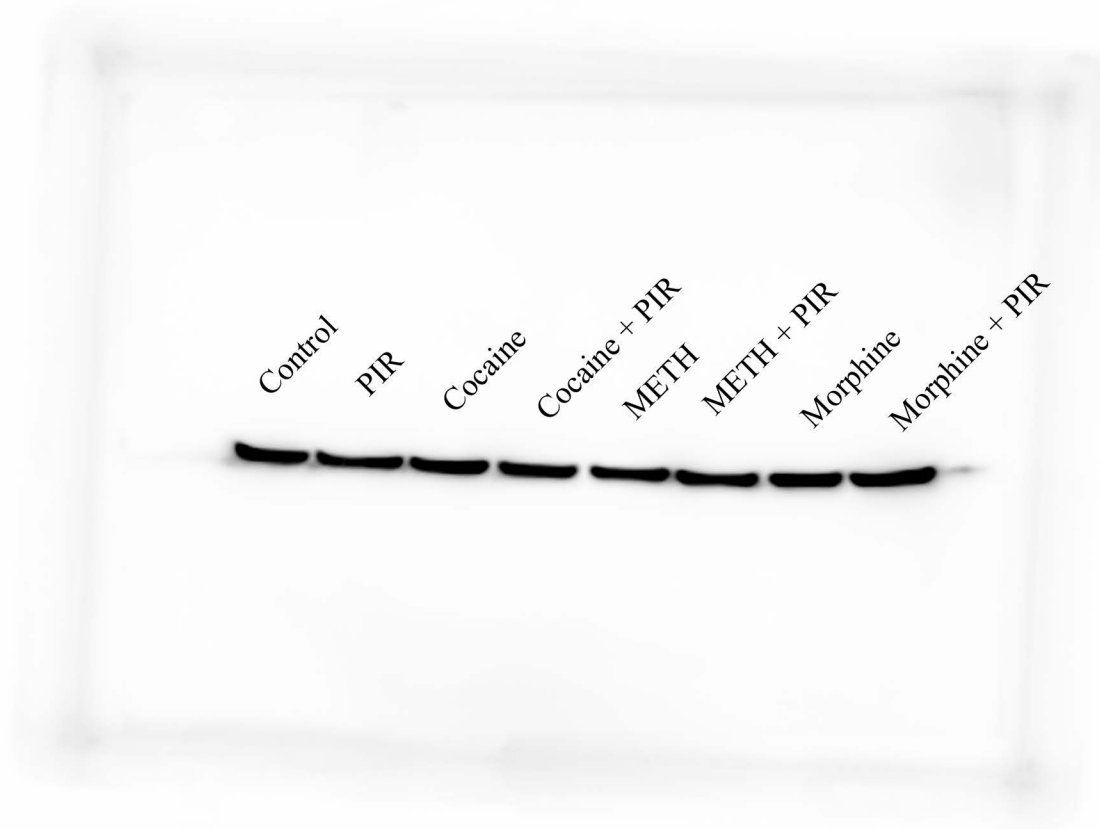
Primary Antibody dilution 1:1000

Fig. 3 B

Secondary Antibody dilution 1:5000

Image captured by C300 azure biosystems

BIORAD: Clarity Western ECL Substrate



GCN 5

Human Primary Astrocyte Sample

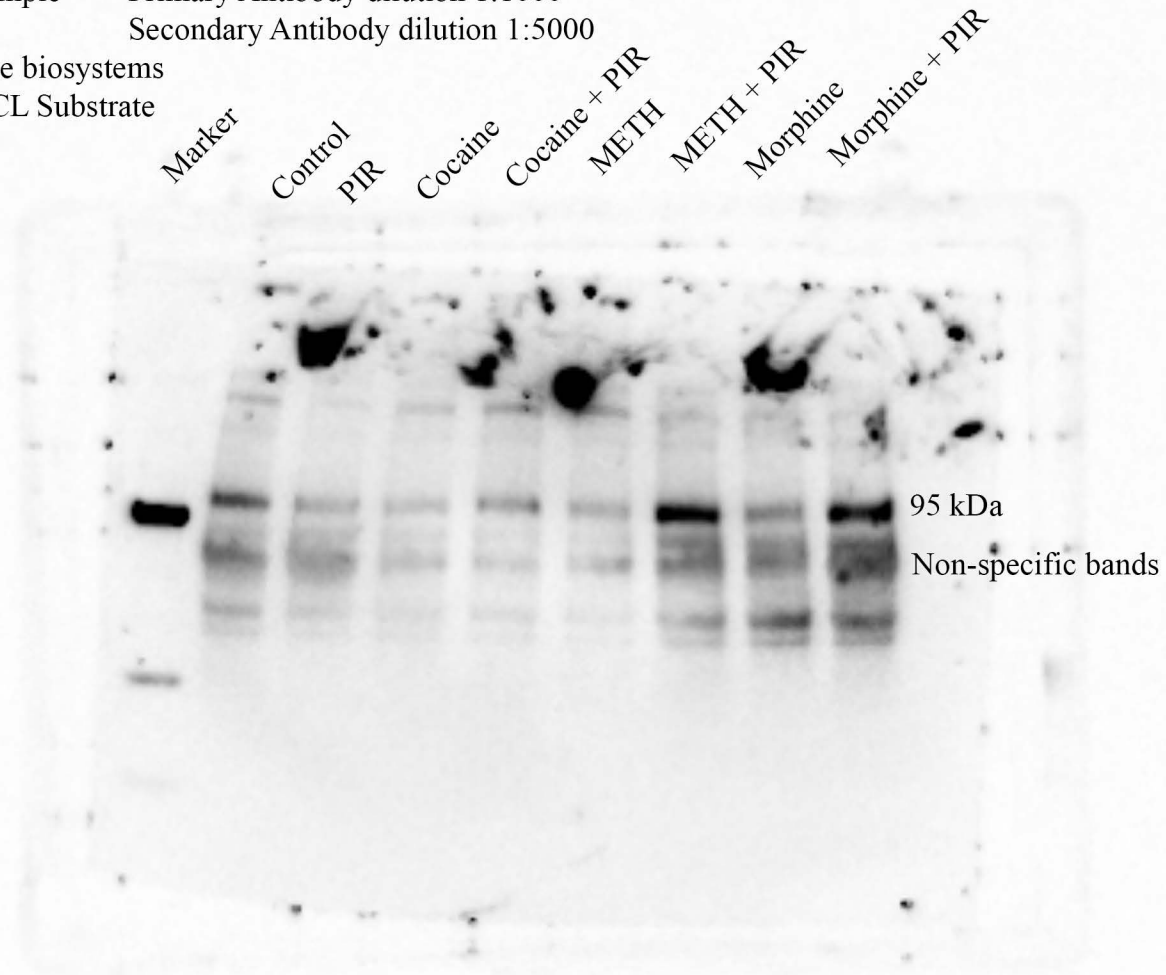
Primary Antibody dilution 1:1000

Fig. 3 C

Secondary Antibody dilution 1:5000

Image captured by C300 azure biosystems

BIORAD: Clarity Western ECL Substrate



GCN5 with marker

Human Primary Astrocyte Sample

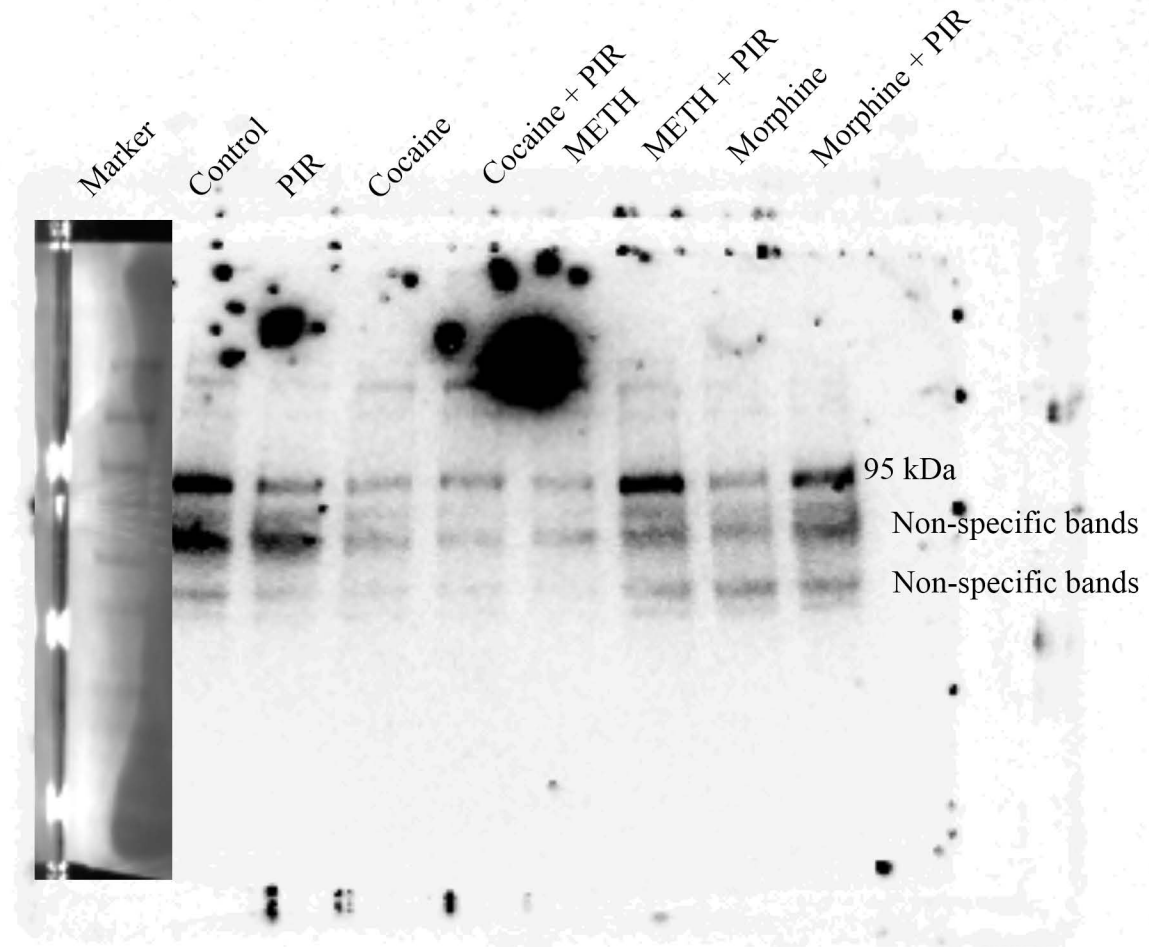
Primary Antibody dilution 1:1000

Fig. 3 C

Secondary Antibody dilution 1:5000

Image captured by C300 azure biosystems

BIORAD: Clarity Western ECL Substrate



GAPDH for GCN5

Human Primary Astrocyte Sample

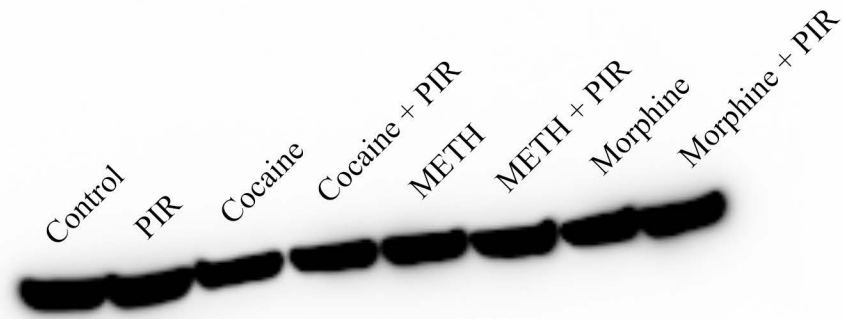
Primary Antibody dilution 1:1000

Fig. 3 C

Secondary Antibody dilution 1:5000

Image captured by C300 azure biosystems

BIORAD: Clarity Western ECL Substrate



H3K9AC

Human Primary Astrocyte Sample

Primary Antibody dilution 1:1000

Fig. 4 A

Secondary Antibody dilution 1:5000

Image captured by C300 azure biosystems

BIORAD: Clarity Western ECL Substrate



H3K9AC with Marker

Human Primary Astrocyte Sample

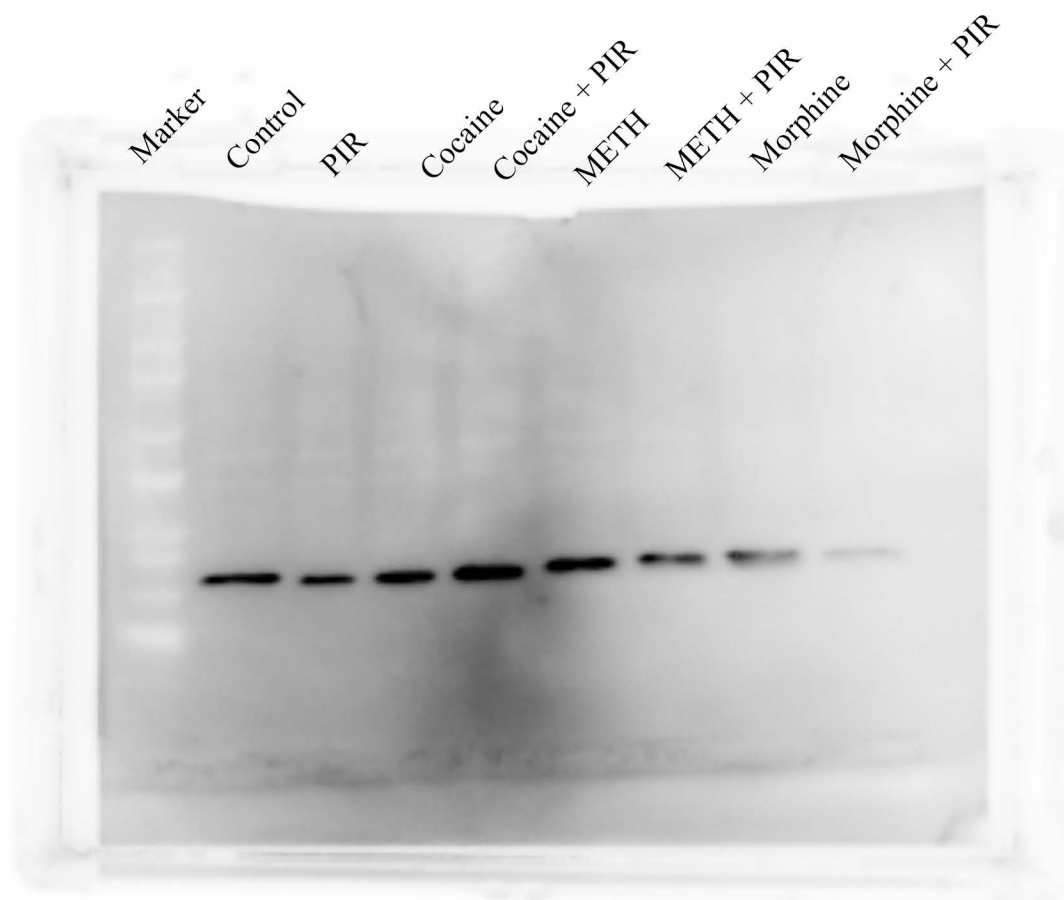
Primary Antibody dilution 1:1000

Fig. 4 A

Secondary Antibody dilution 1:5000

Image captured by C300 azure biosystems

BIORAD: Clarity Western ECL Substrate



H3K14AC

Human Primary Astrocyte Sample

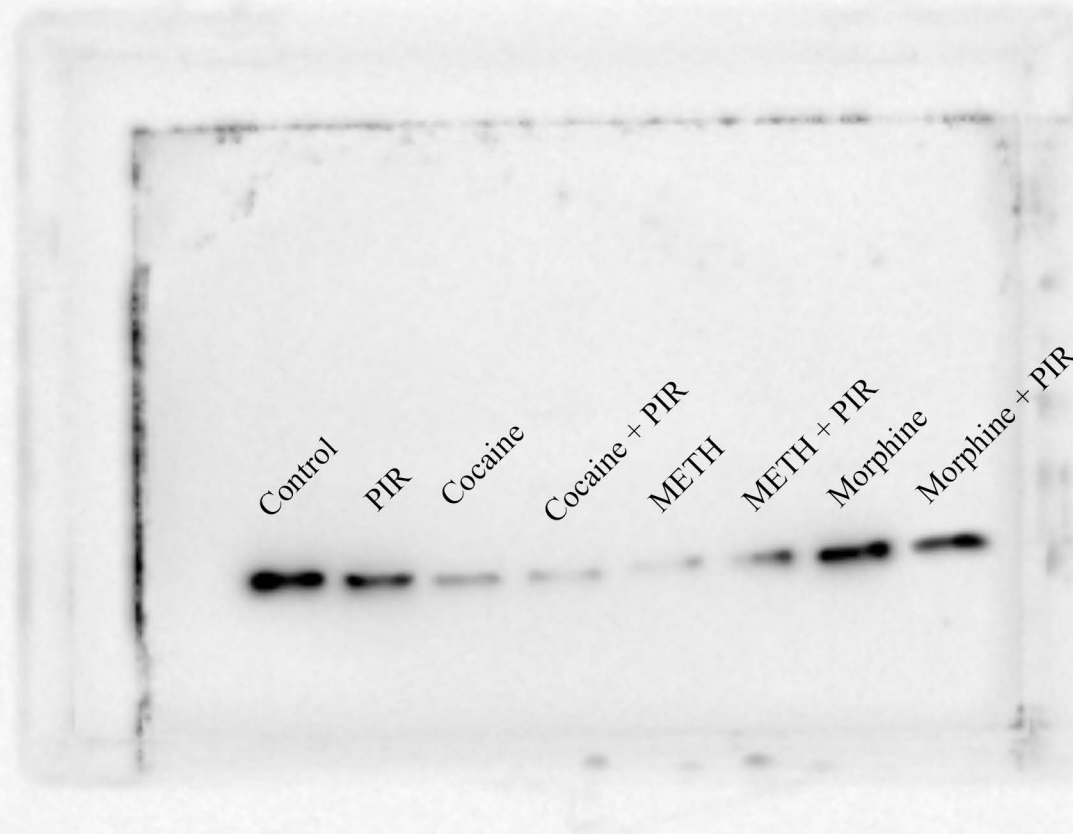
Primary Antibody dilution 1:1000

Fig. 4 B

Secondary Antibody dilution 1:5000

Image captured by C300 azure biosystems

BIORAD: Clarity Western ECL Substrate



H3K14AC with Marker

Human Primary Astrocyte Sample

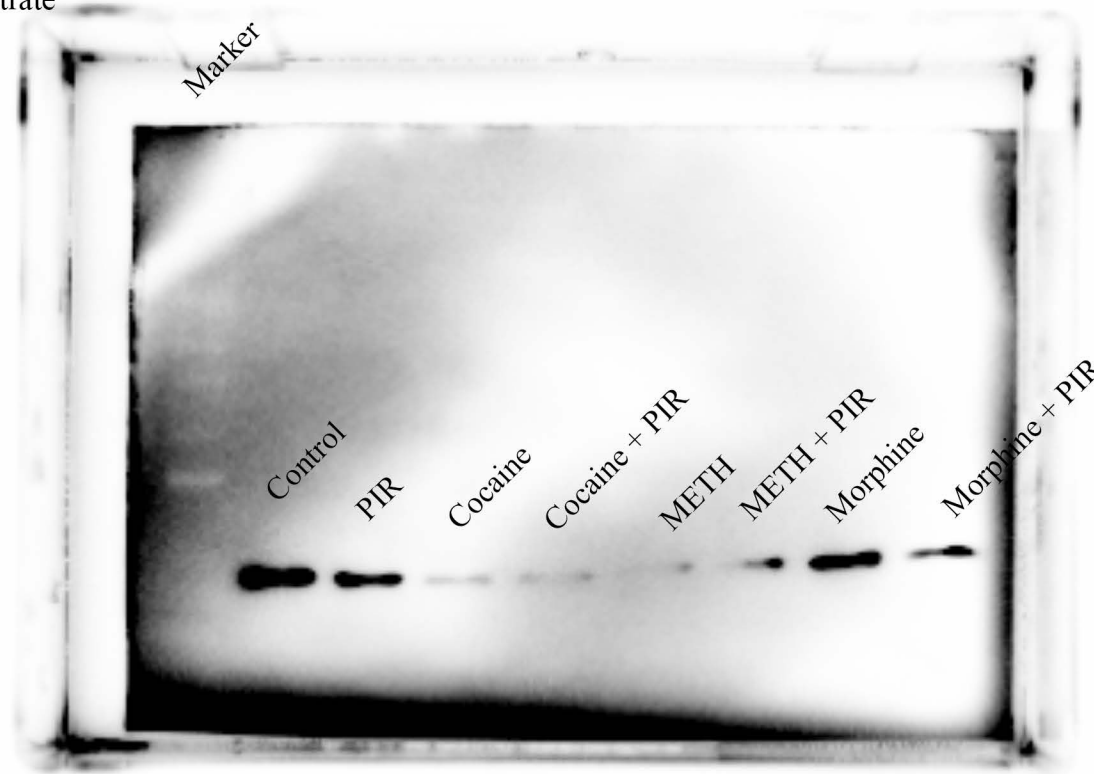
Primary Antibody dilution 1:1000

Fig. 4 B

Secondary Antibody dilution 1:5000

Image captured by C300 azure biosystems

BIORAD: Clarity Western ECL Substrate



H3K18AC

Human Primary Astrocyte Sample

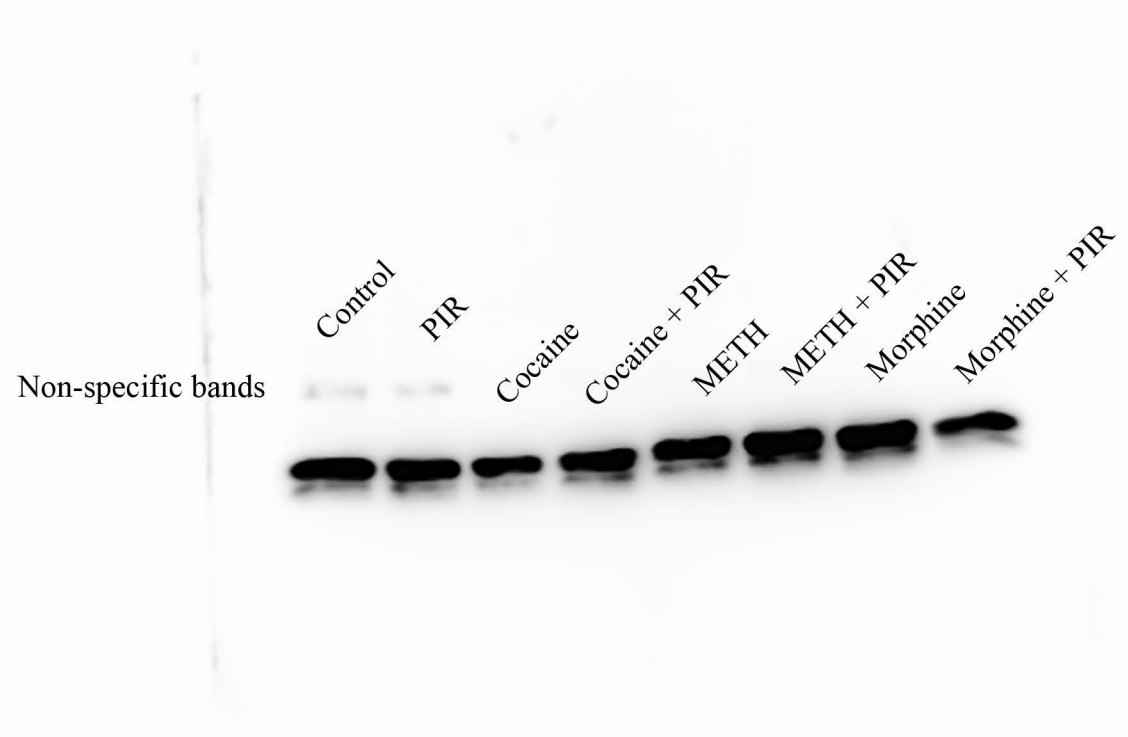
Primary Antibody dilution 1:1000

Fig. 4 C

Secondary Antibody dilution 1:5000

Image captured by C300 azure biosystems

BIORAD: Clarity Western ECL Substrate



H3k27AC

Human Primary Astrocyte Sample

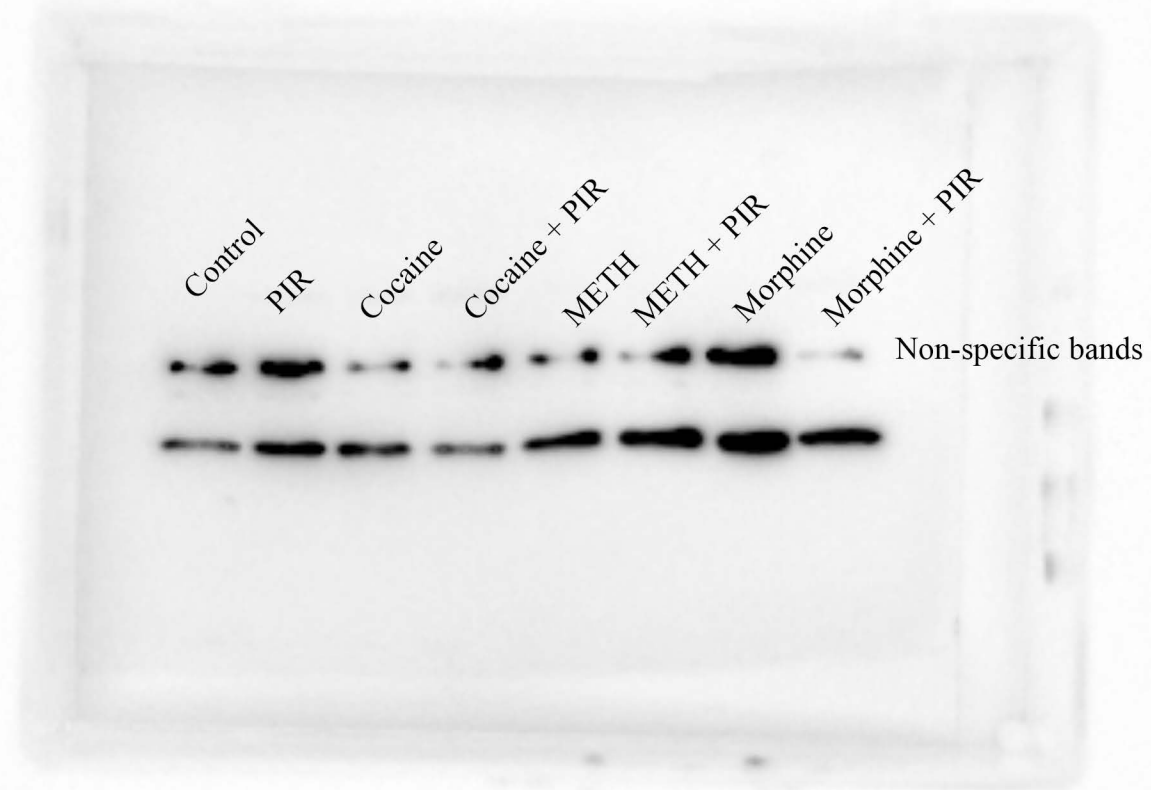
Fig. 4 D

Image captured by C300 azure biosystems

BIORAD: Clarity Western ECL Substrate

Primary Antibody dilution 1:1000

Secondary Antibody dilution 1:5000



H3k27AC with marker

Human Primary Astrocyte Sample

Primary Antibody dilution 1:1000

Fig. 4 D

Secondary Antibody dilution 1:5000

Image captured by C300 azure biosystems

BIORAD: Clarity Western ECL Substrate



H3K56AC

Human Primary Astrocyte Sample

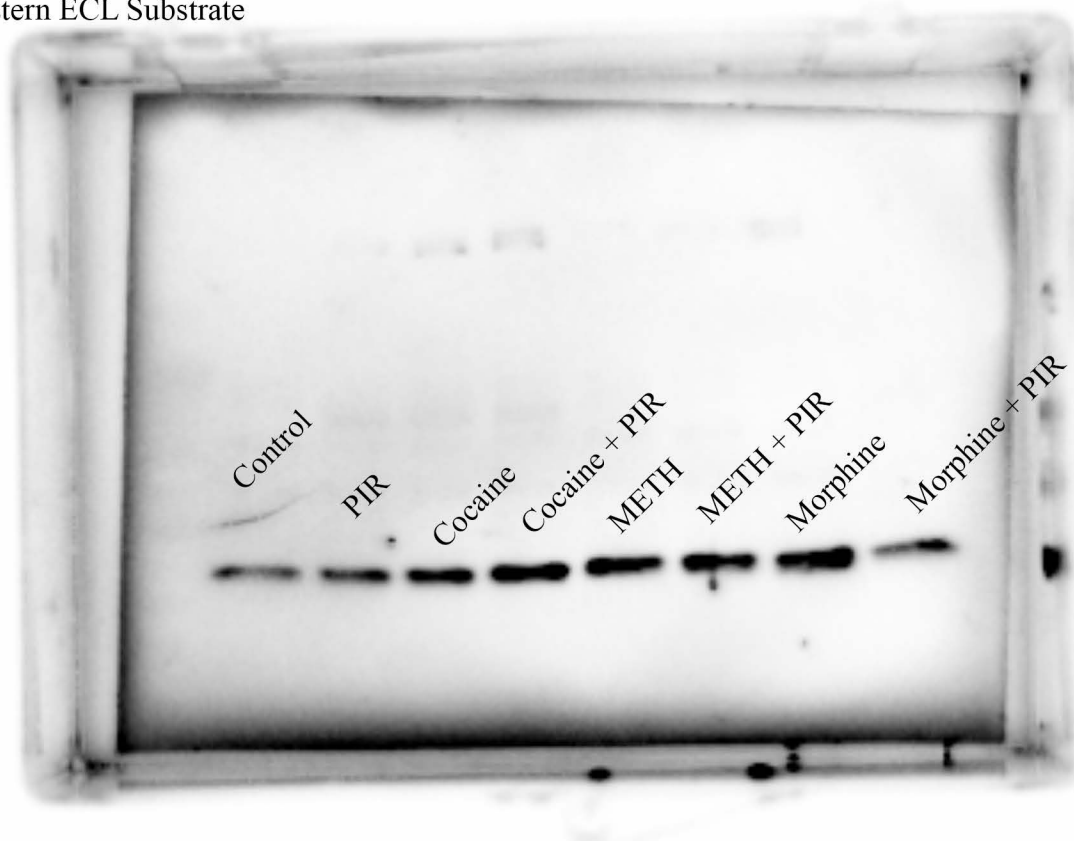
Primary Antibody dilution 1:1000

Fig. 4 E

Secondary Antibody dilution 1:5000

Image captured by C300 azure biosystems

BIORAD: Clarity Western ECL Substrate



H3K56AC with marker

Human Primary Astrocyte Sample

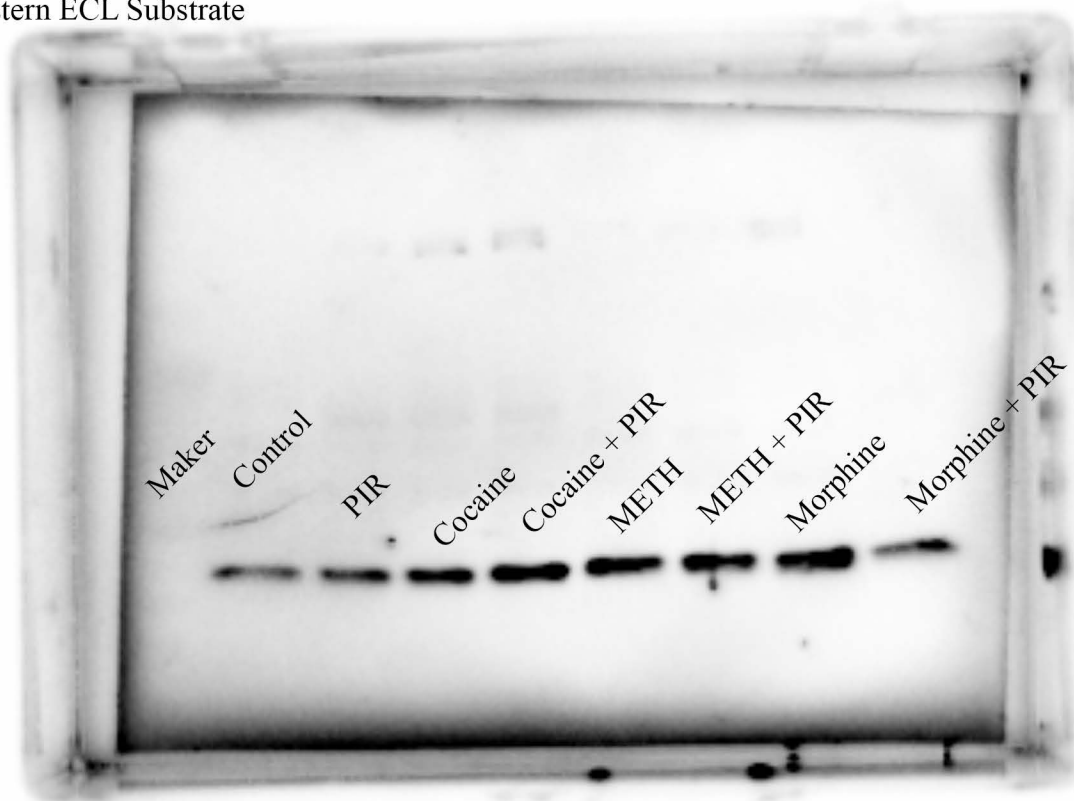
Primary Antibody dilution 1:1000

Fig. 4 E

Secondary Antibody dilution 1:5000

Image captured by C300 azure biosystems

BIORAD: Clarity Western ECL Substrate



Total H3

Human Primary Astrocyte Sample

Primary Antibody dilution 1:1000

Fig. 4 F

Secondary Antibody dilution 1:5000

Image captured by C300 azure biosystems

BIORAD: Clarity Western ECL Substrate

