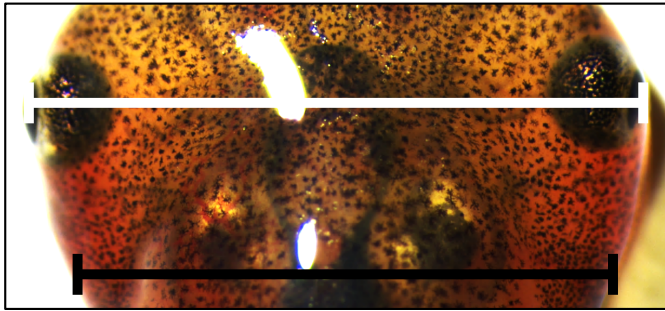
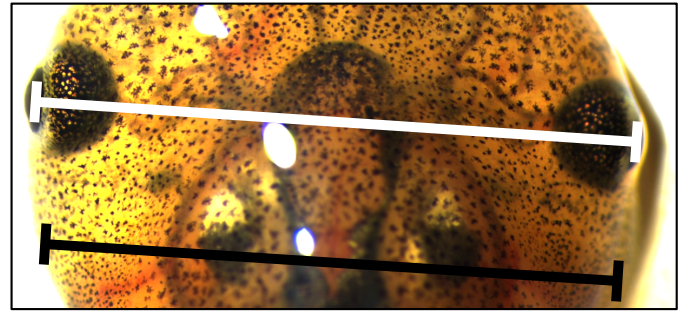


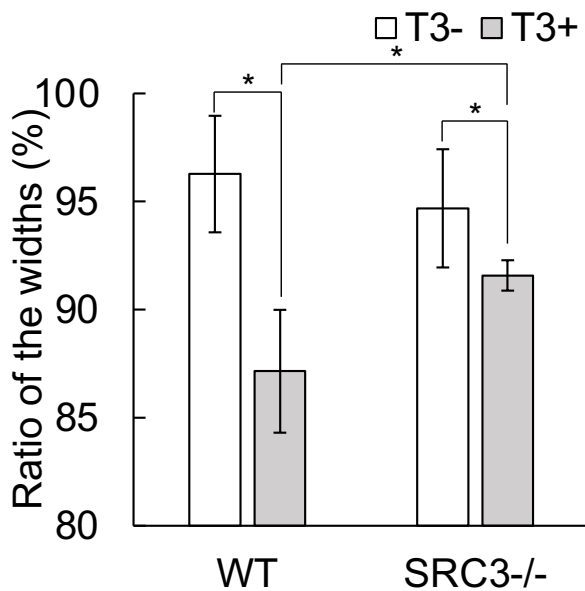
A WT



SRC3 (-/-)



B



Supplemental Figure 4. SRC3 is important for gill resorption. **(A)** Representative photos of the head region of wild-type (WT) and SRC3(-/-) tadpoles after 3 days of T3 treatment. The white line spans the width from the outer edge of the eyes and black line indicates the width at the gill position. **(B)** SRC3(-/-) tadpoles have less gill resorption after 3 days of T3 treatment. WT and SRC3(-/-) tadpoles at premetamorphic stage 54 were treated with T3 for 3 days. The ratio of length of the black line to that of the white line in each tadpole was determined as a measure for relative gill size. Note the drastic reduction in the ratio after T3 treatment in the WT animals while much less in the knockout animals. The asterisk (*) indicates a significant difference ($p < 0.05$).