

Figure S1. Function prediction of miR-200b by correlation analysis. Correlation analysis of miR-200b in (A) TCGA LUAD and (B) TCGA LUSC datasets. Venn diagrams show the intersection of the (C) positively and (D) negatively correlated miRNAs in TCGA LUAD and TCGA LUSC datasets. (E) Pathway enrichment results of these correlated genes. miR/miRNA, microRNA; TCGA, The Cancer Gene Atlas; LUAD, lung adenocarcinoma; LUSC, lung squamous cell carcinoma.

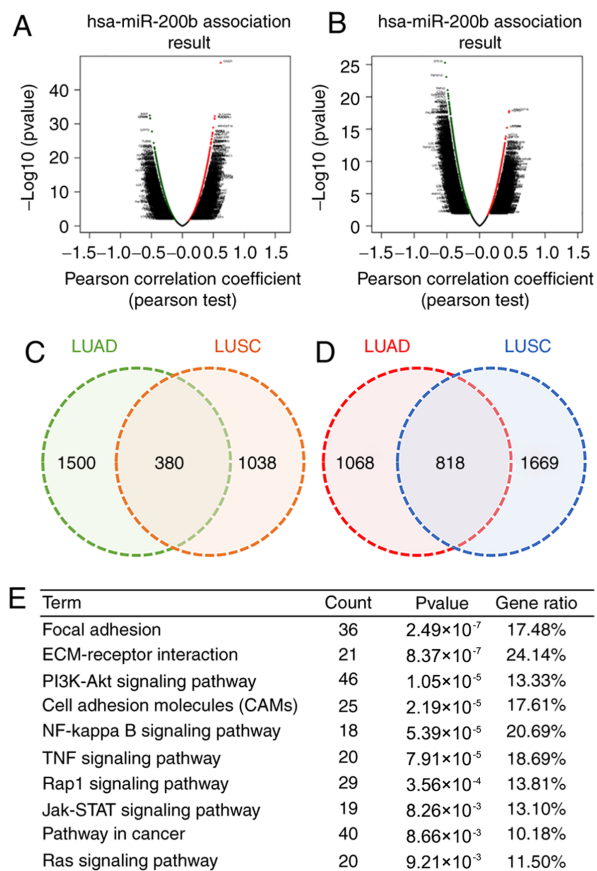


Figure S2. Transfection efficiency of miR-200b and pCDH-ETS1. (A) Reverse transcription-quantitative PCR results showing miR-200b expression in miR-200b mimic- and inhibitor-transfected cells. **P<0.01 vs. mimic NC group; ##P<0.01 vs. inhibitor NC group. (B) Fluorescence image showing the transfection efficiency of miR-200b mimics, magnification, x400; scale bar, 50 μ m. (C) mRNA expression of ETS1 in pCDH ETS1-transfected cells. (D and E) Protein expression of ETS1 protein in pCDH ETS1-transfected cells. **P<0.01 vs. pCDH blank group. pCDH Blank, empty pCDH-EF1-copGFP vector; pCDH ETS1, ETS1 overexpression plasmid constructed from pCDH-EF1-copGFP; miR, microRNA; ETS1, ETS proto-oncogene 1 transcription factor; FAM, 5-carboxyfluorescein; NC, negative control.

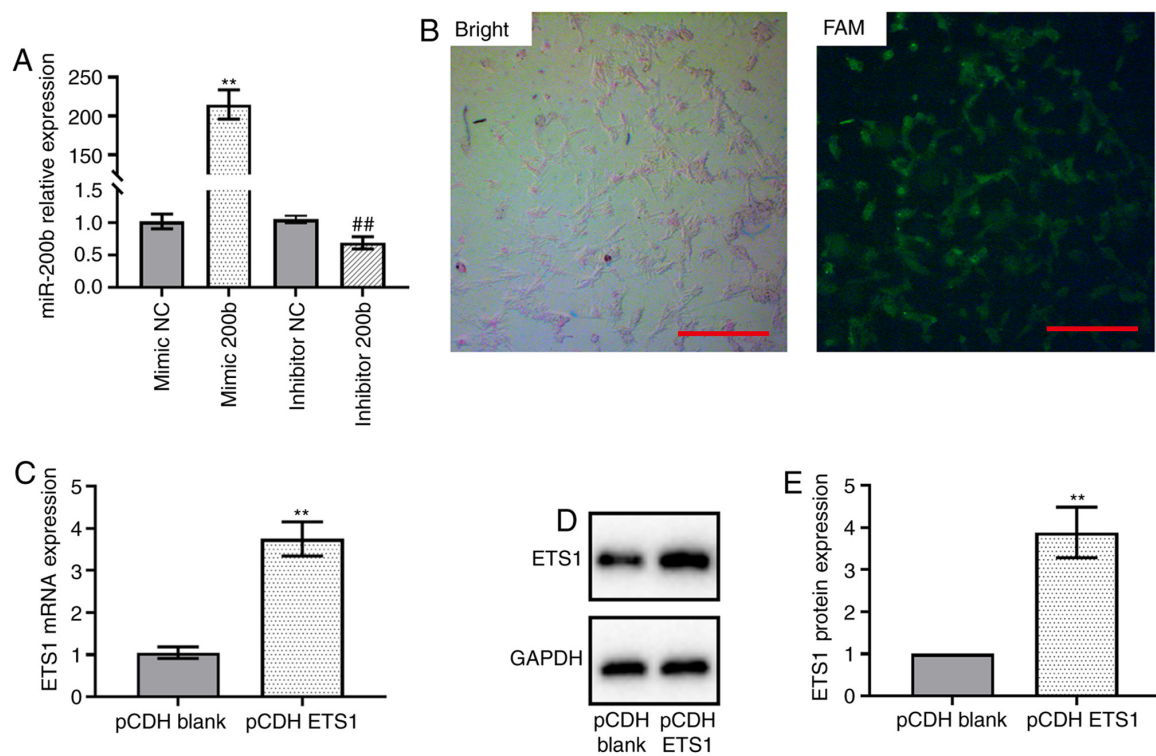


Table SI. Primers used in the present study.

Primer name	Primer sequences (5'→3')
ETS1	F: CAAAACATGCTGTTAGGAGCCT R: CCACTTGTCTTGCTCATTCC
CDH1	F: CGAGAGCTACACGTTACGG R: GGGTGTCGAGGGAAAAATAGG
CDH2	F: AGCCAACCTTAACTGAGGAGT R: GGCAAGTTGATTGGAGGGATG
GAPDH	F: CTGGGCTACACTGAGCACC R: AAGTGGTCGTTGAGGGCAATG

ETS1, ETS proto-oncogene 1 transcription factor; CDH1, E-Cadherin; CDH2, N-Cadherin; F, forward; R, reverse.