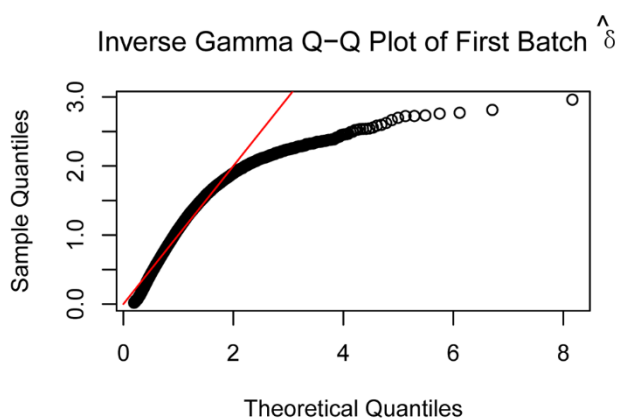
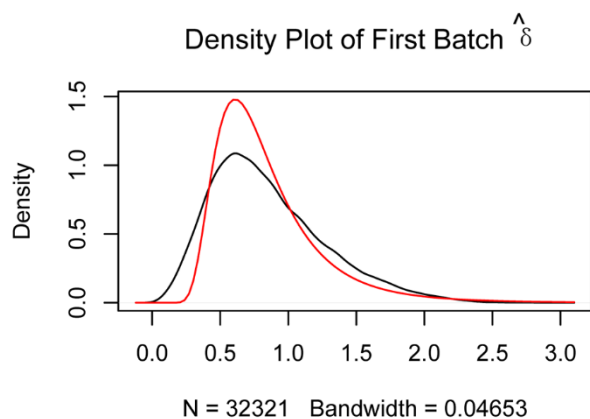
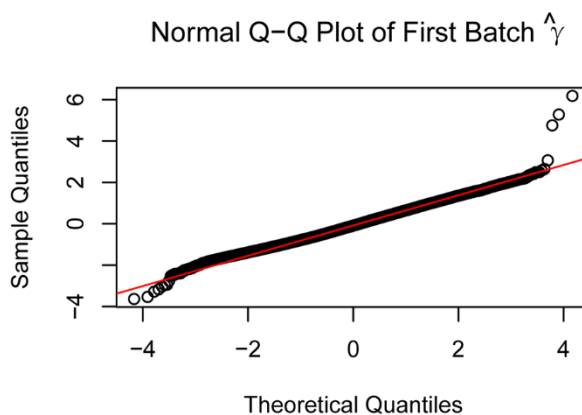
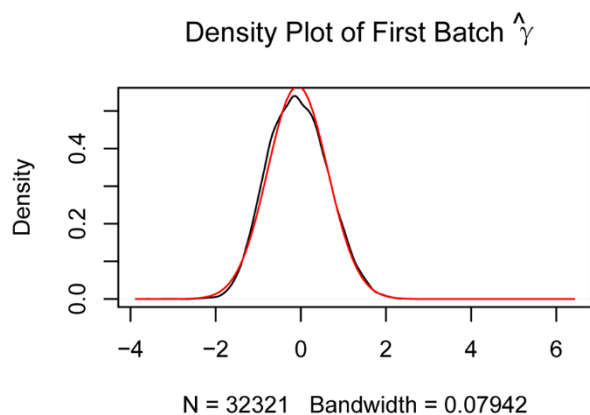
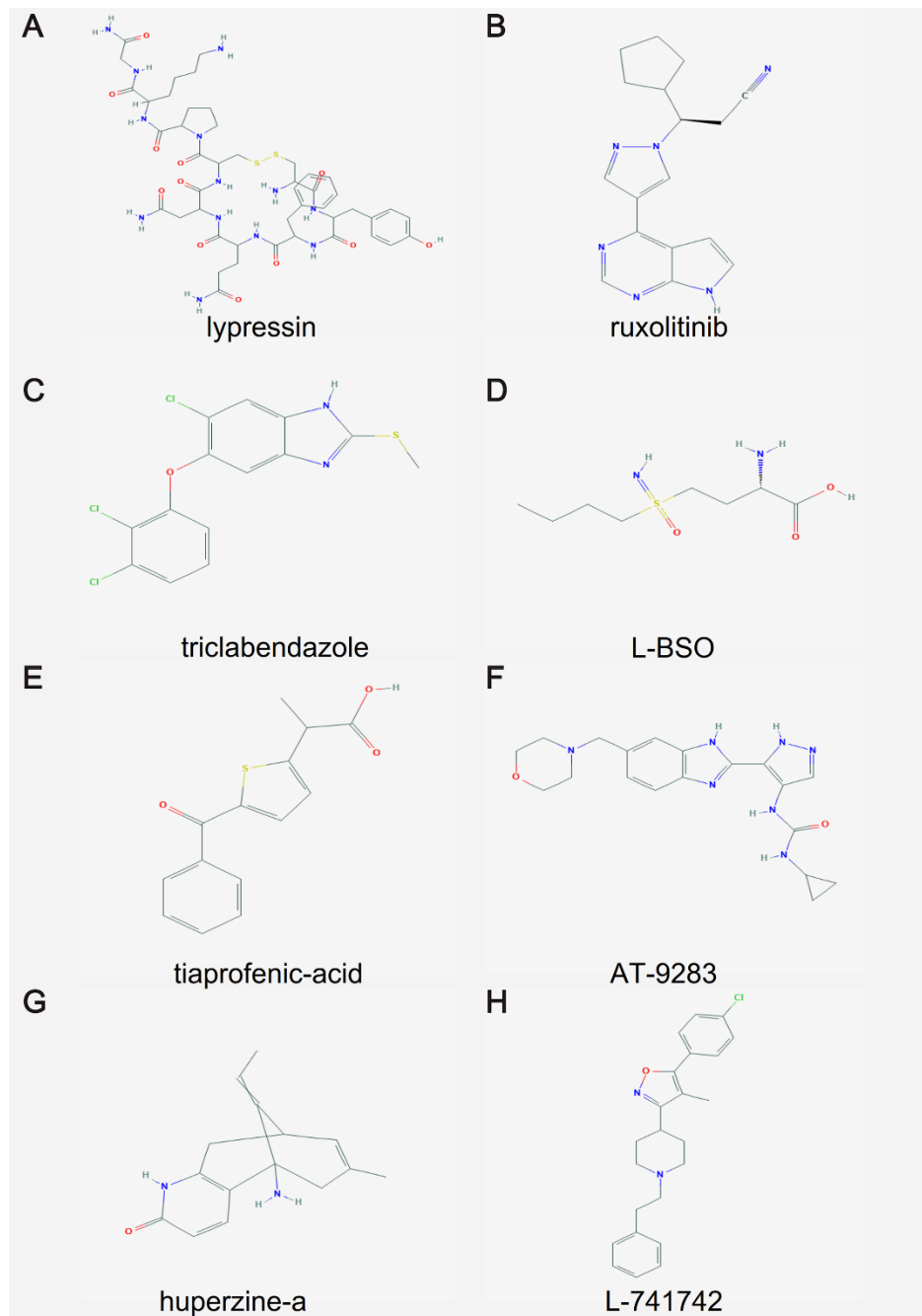


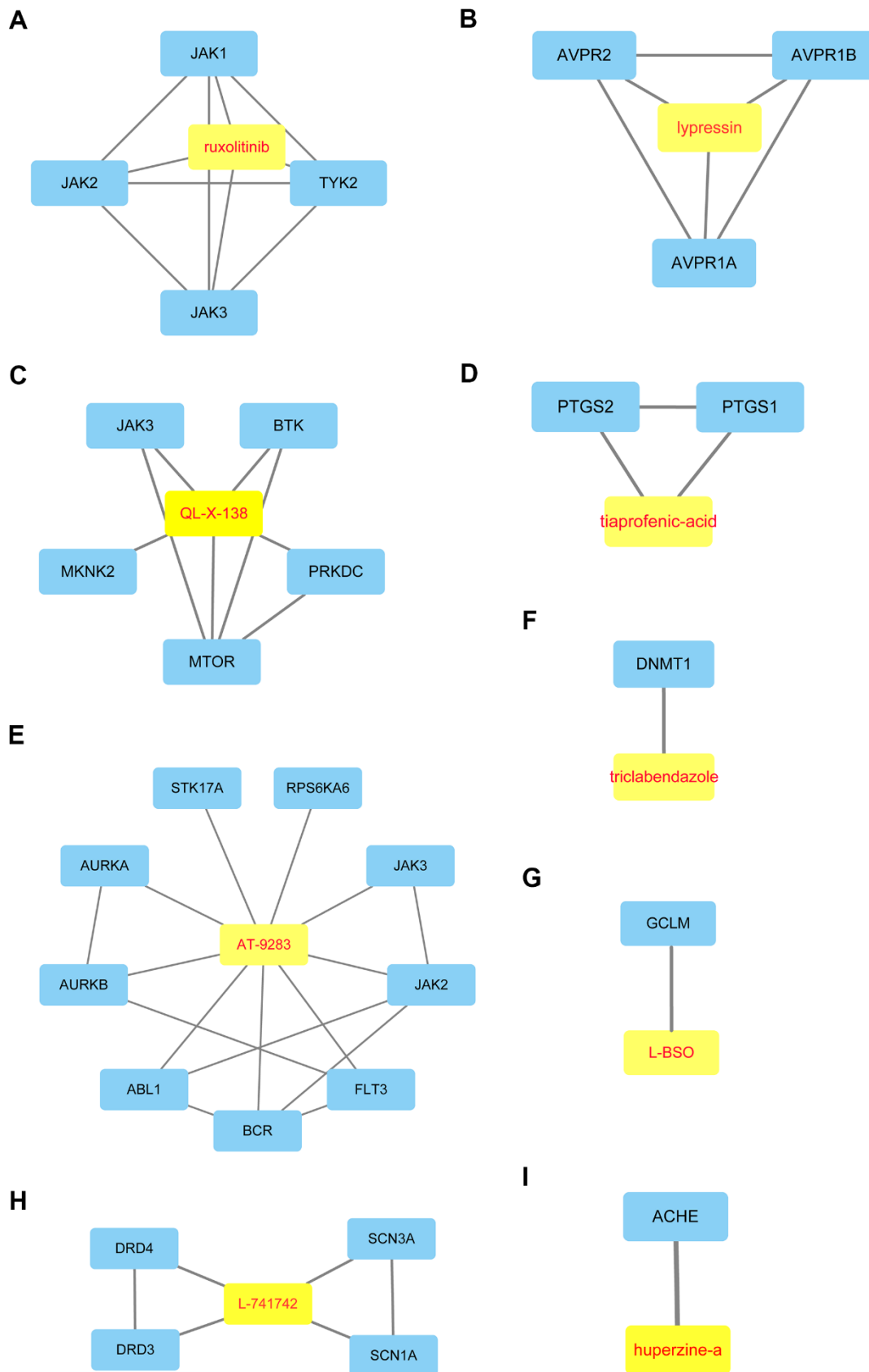
SUPPLEMENTARY FIGURES



Supplementary Figure 1. The quantile-quantile (Q-Q) plot of the batch effect of GSE113439, GSE53408 and GSE117261 datasets is removed.



Supplementary Figure 2. 2D structure of the candidate compounds. (A) lypressin, (B) ruxolitinib, (C) triclabendazole, (D) L-BSO, (E) tiaprofenic acid, (F) AT-9283, (G) huperzine-a, (H) L-741742.



Supplementary Figure 3. The drug-target network for nine candidate drugs. Yellow represented drug and blue represented target. (A) ruxolitinib. (B) lypressin. (C) QL-X-138. (D) tiaprofenic-acid. (E) AT-9283. (F) triclobandazole. (G) L-BSO. (H) huperzine-a. (I) L-741742.