

Supplementary Online Content

Xiao Y, Cerel J, Mann JJ. Temporal trends in suicidal ideation and attempts among US adolescents by sex and race/ethnicity, 1991-2019. *JAMA Netw Open*. 2021;4(6):e2113513.
doi:10.1001/jamanetworkopen.2021.13513

eFigure 1. Turning Points in Temporal Trends in Suicidal Subgroups and Possible Associated Policy and Societal Factors, 1991-2019

eFigure 2. Prevalence of Suicidal Ideation and Suicide Attempts among US Adolescents, by Sex, 1991-2019

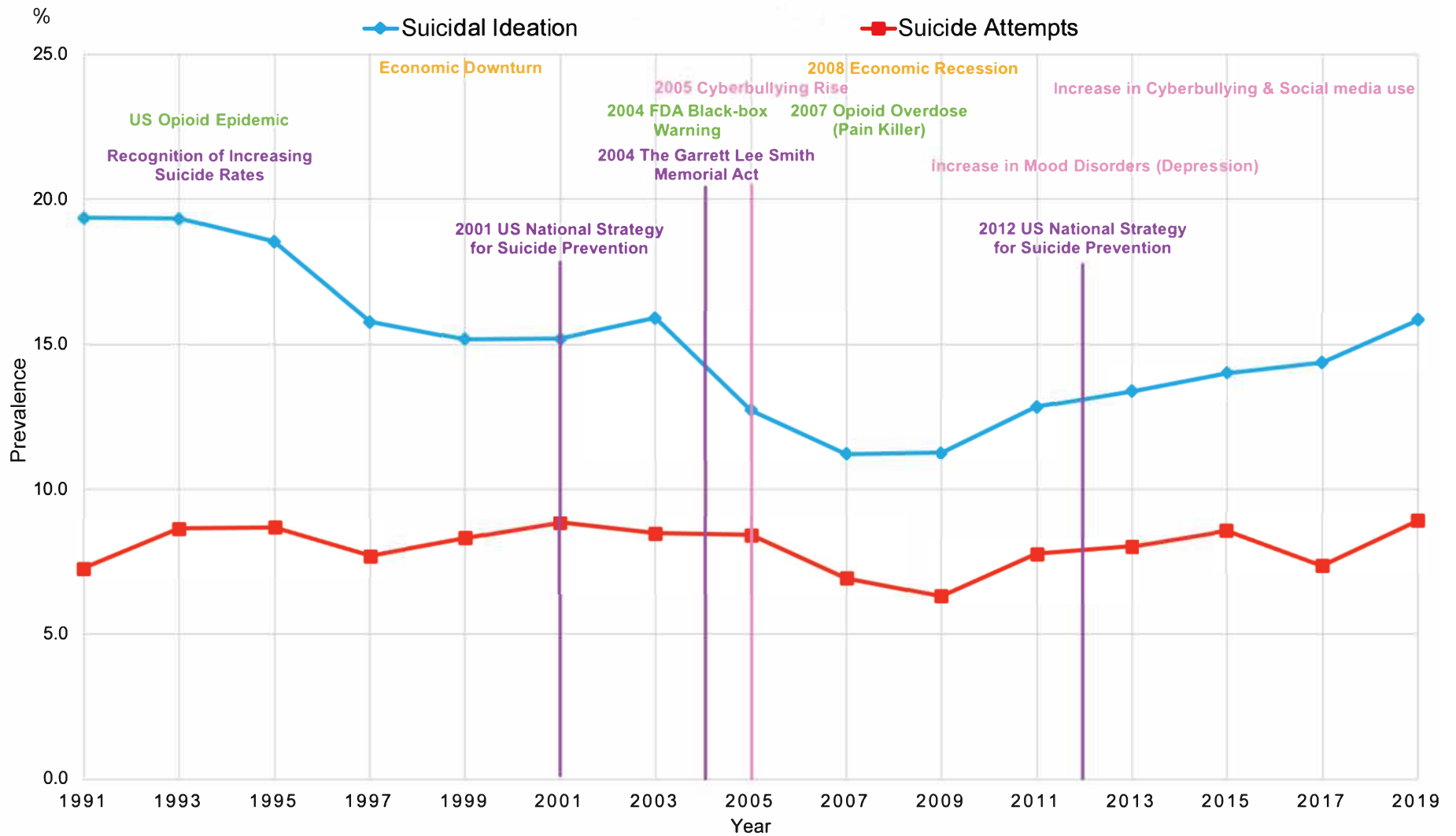
eFigure 3. Prevalence of Suicidal Ideation and Suicide Attempts among US Adolescents, by Race/ethnicity, 1991-2019

eFigure 4. Prevalence of Suicidal Ideation and Suicide Attempts among U.S. Adolescents, by Sex and Race/ethnicity, 1991-2019

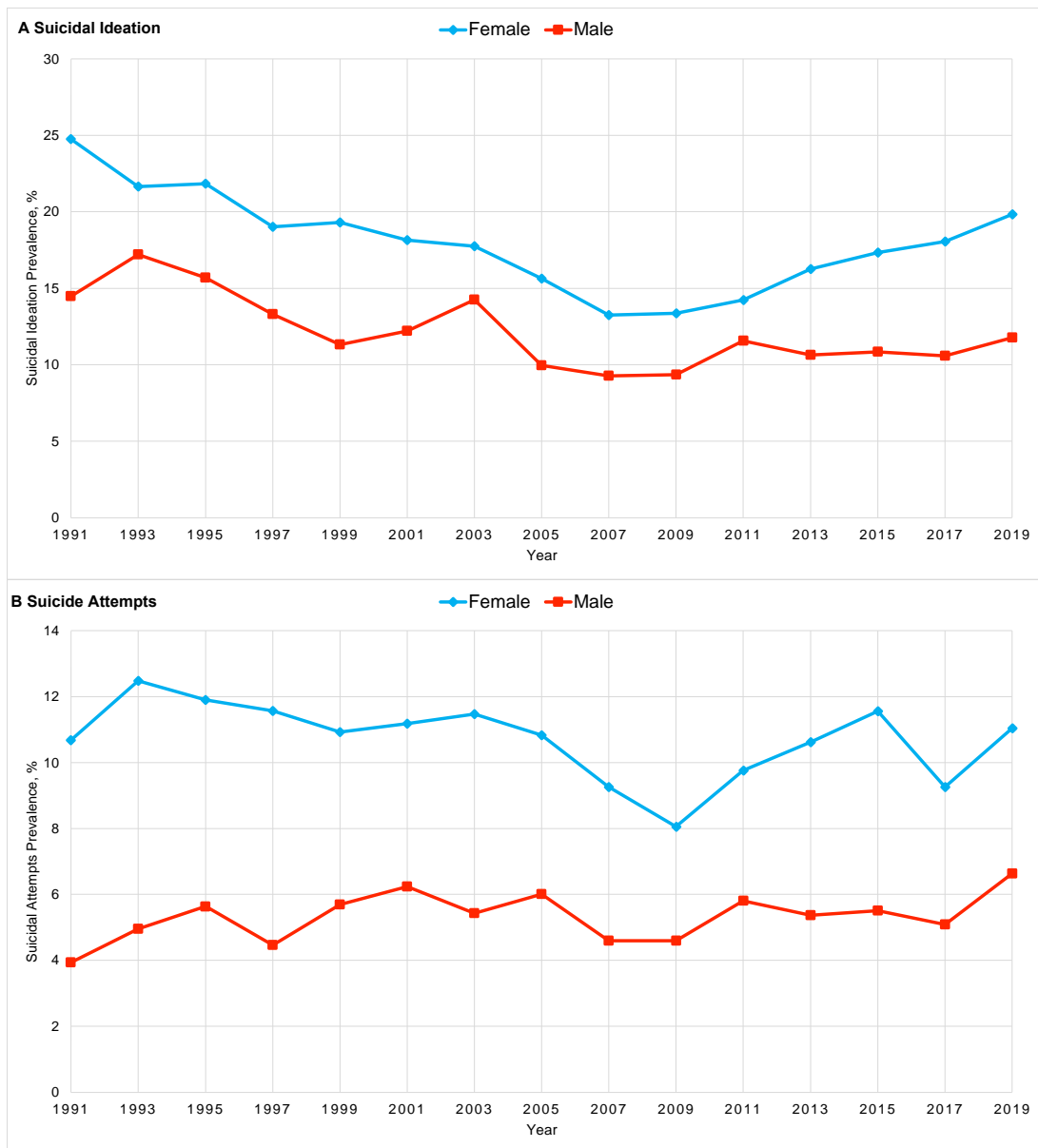
eFigure 5. Trends in Suicidal Ideation and Suicide Attempts among U.S. Adolescents, by Sex and Race/ethnicity, 1991-2019

This supplementary material has been provided by the authors to give readers additional information about their work.

eFigure 1. Turning Points in Temporal Trends in Suicidal Subgroups and Possible Associated Policy and Societal Factors, 1991-2019

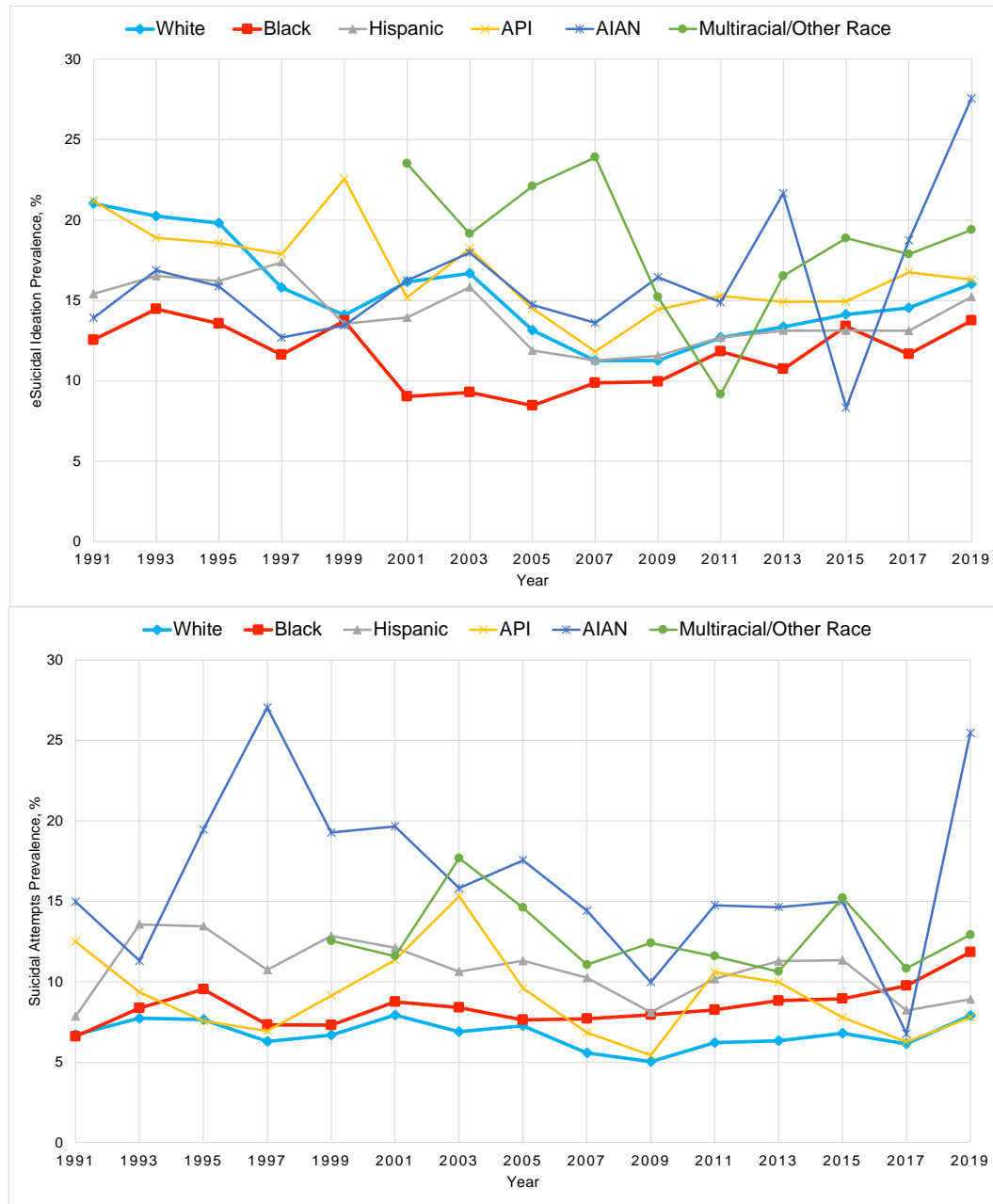


eFigure 2. Prevalence of Suicidal Ideation and Suicide Attempts among U.S. Adolescents, by Sex, 1991-2019



Note. For suicidal ideation, parallel comparisons by sex were not rejected ($P=.55$). For suicide attempts, APCs differed significantly from each other among females and males ($P=.005$).

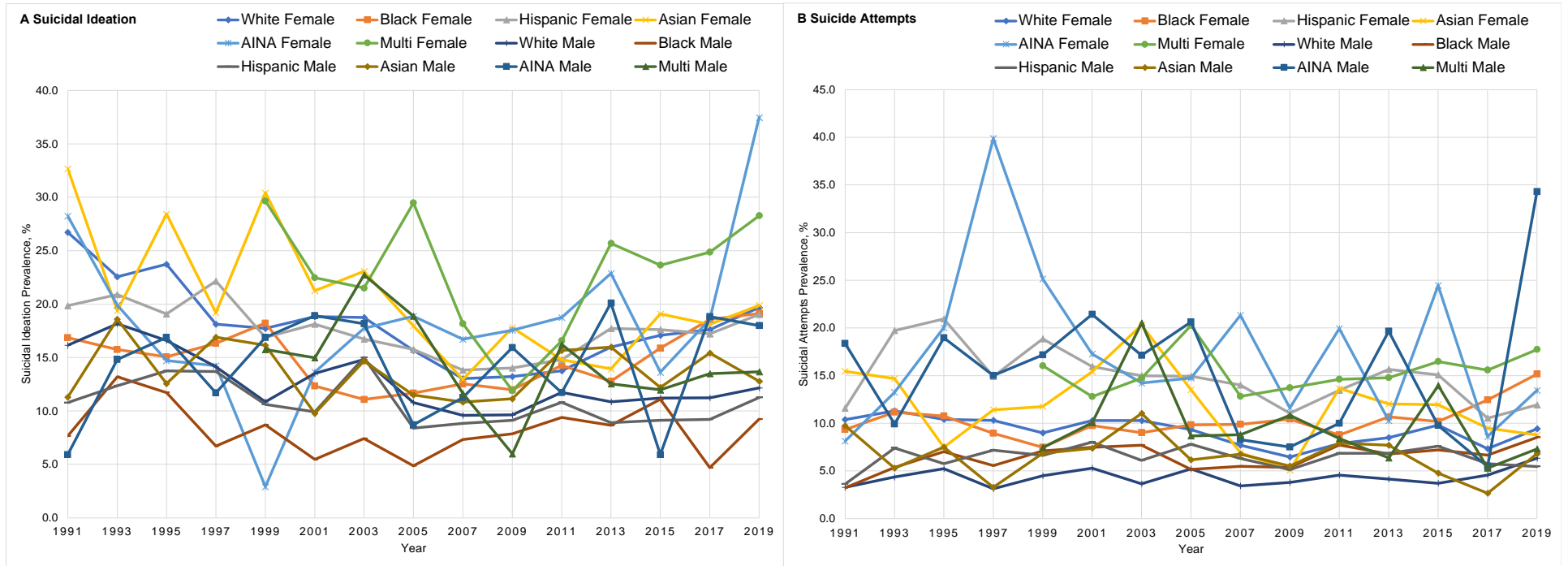
eFigure 3. Prevalence of Suicidal Ideation and Suicide Attempts among U.S. Adolescents, by Race/ethnicity, 1991-2019



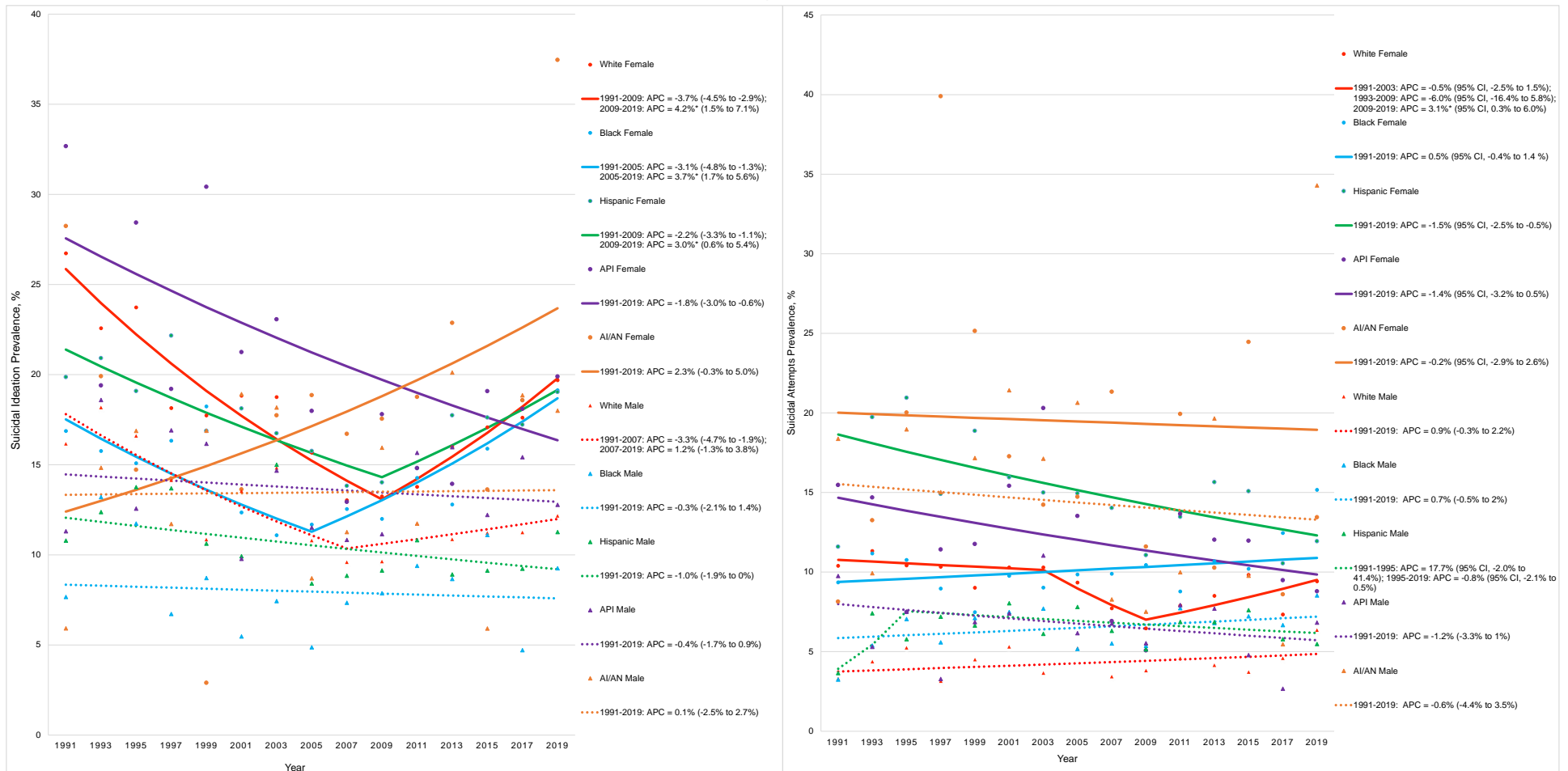
Note. For suicidal ideation, parallel comparisons were rejected when comparing White and Black adolescents ($P=.01$), White and AI/AN adolescents ($P=.02$),
 © 2021 Xiao Y et al. JAMA Network Open.

Black and API adolescents ($P=.02$), and Hispanic and AI/AN adolescents ($P=.02$). For suicide attempts, APCs differed significantly between White and Black adolescents ($P=.003$) and Black and Hispanic adolescents ($P=.01$).

eFigure 4. Prevalence of Suicidal Ideation and Suicide Attempts among U.S. Adolescents, by Sex and Race/ethnicity, 1991-2019



eFigure 5. Trends in Suicidal Ideation and Suicide Attempts among U.S. Adolescents, by Sex and Race/ethnicity, 1991-2019



Note. For suicidal ideation, parallel comparisons were rejected when comparing White females vs. Black females ($P=.02$), White females vs. API females ($P=.04$), White females vs. AI/AN females ($P=.03$), Black vs. API females ($P=.003$), Black females vs. White males ($P=.02$), Black females vs. Hispanic males ($P=.01$), Hispanic female vs. AI/AN females ($P=.01$), Hispanic female vs. White males ($P=.01$), API female vs. AI/AN females ($P=.02$), AI/AN female vs. Hispanic males ($P=.01$), White males vs. Black males ($P=.04$), and White males vs. API males ($P=.03$), indicating different pairwise slopes. For suicide attempts, parallel comparisons were rejected when comparing White females vs. Black females ($P=.02$), White females vs. White males ($P=.02$), White females vs. Black males ($P=.01$), White females vs. Hispanic males ($P<.001$), Black females vs. Hispanic females ($P=.001$), Black females vs. API females ($P=.04$), Black females vs. Hispanic males ($P=.01$), Hispanic female vs. White males ($P=.01$), Hispanic female vs. Black males ($P=.01$), Hispanic female vs. Hispanic males ($P=.02$), and API female vs. Hispanic males ($P=.04$), indicating the pairwise slopes were different. Results for non-Hispanic multiracial adolescents were not displayed due to missing values over time.