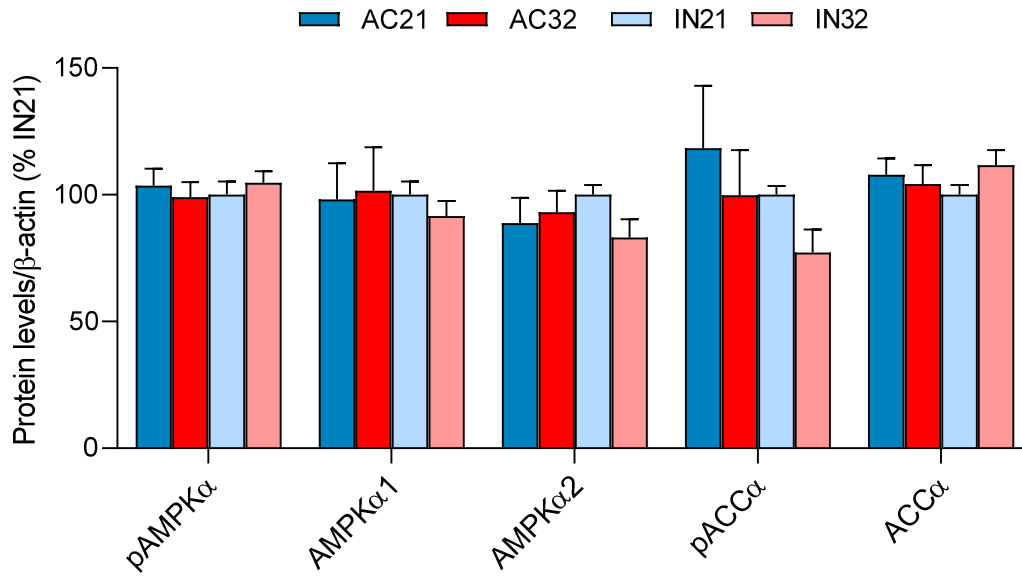


Supplemental Table 1. Primers and probes for real-time PCR (TaqMan) analysis

Gen	GenBank	Function	Sequence
ACC α	NM_022193	Fw	5'-TGGGCGGGATGGTCTCTTT-3'
		Rv	5'-AGTCGCAGAAGCAGCCCATT-3'
		Pb	FAM-5'- ACCTTTGAAGATTTTCGTCAGGATCTTTGATGA-3'- TAMRA
ADR β 1	NM_012701	Fw	5'-TCTACGTGCCCTGTGCAT-3
		Rv	5'-GCTGTCGATCTTCTTCACCTGTTT-3'
		Pb	FAM-5'-TGTACCTCCGGGTGTTCCGCGA-3'-TAMRA
ADR β 2	NM_012492	Fw	5'-CTTCCAGGTGGCCAAAAG-3'
		Rv	5'-GCTGAGTTTTTGGGCATGAA-3'
		Pb	FAM-5'-TGCAGAAGATAGACAAATCCGAGGGCAG- 3'-TAMRA
ADR β 3	NM_013108	Fw	5'-CCTTCCCAGCTAGCCCTGTT-3'
		Rv	5'-TGCTAGATCTCCATGGTCCTTCA-3'
		Pb	FAM-5'-AACTCACCGCTCAACAGGTTTGATGGC-3'- TAMRA
ATROGIN-1	NM_133521.1	Assay ID	ThermoFisher Taqman Gene Expression Assays Assay ID Rn01504258_m1
C/EBP α	NM_001287579.1	Fw	5'-GTGCGTAAGAGCCGAGATAA-3'
		Rv	5'-TGGTCAACTCCAACACCTTCTG-3'
		Pb	FAM-5'-AAACAGCGCAACGTGGAGACGCA-3'
C/EBP β	NM_024125.5	Fw	5'CAGAGTAGCCCCTTGTCTTTTGG-3'
		Rv	5'-GGATTGCAGGTCAGACACAGAA-3'
		Pb	FAM-5'-TGAGGATAGCCAGGTCAAAGCCCA-3'
CPT1b	NM_013200.1	Assay ID	Applied Biosystems TaqMan Gene Expression Assays Assay ID Rn00566242_m1
FAS	NM_017332	Fw	5'-GACATTTTCATCAGGCCACC-3'
		Rv	5'-CCTCTAGCAGCCGCACCTC-3'
		Pb	FAM-5'-CTGCCCAGGACAGGAACCG-3'-TAMRA
		Fw	5'-CAC TCT GGT ACC CAG GAC CAA TAA-3'
FGF21	NM_130752	Rv	5'-CCC TCA ACT TTT CTC TGC CTA GGT-3'
		Pb	5'-ACA AGA GTA GAG GTG GTG GGC AGA ATG CC-3'
HPRT	NM_012859	Fw	5'-AGCCGACCGTTCTGTCAT-3'
		Rv	5'-GGTCATAACCTGGTTCATCAC-3'
		Pb	FAM-5'-CGACCCTCAGTCCCAGCGTCGTGAT-3'- TAMRA
HSL	NM_012859	Fw	5'-CCAAGTGTGTGAGCGCCTATT-3'
		Rv	5'-TCACGCCCAATGCCTTCT-3'
		Pb	FAM-5'- AGGGACAGAGACGGAGGACCATTTGACTC-3'- TAMRA
LPL	NM_012598	Fw	5'-CTGAAAGTGAGAACATTCCCTTCA-3'

		Rv	5'-CCGTGTAAATCAAGAAGGAGTAGGTT-3'
		Pb	FAM-5'-CCTGCCGGAGGTCGCCACAAATA-3'- TAMRA
MURF-1	NM_080903.1	Assay ID	ThermoFisher Taqman Gene Expression Assays Assay ID Rn01639111_m1
PPAR γ	NM_013124	Fw	5'-TGGGCCAGAATGGCATCTC-3'
		Rv	5'-CTGATGCACTGCCTATGAGCACTTACA-3'
		Pb	FAM-5'-CTAACTCCCAGAAAAGCAAGCAA-3'- TAMRA
SREBP1	NM_011480	Fw	5'-CTCATCAACAACCAAGACAG-3'
		Rv	5'- TGTGGCCATGGAGATAGCATCTC-3'
		Pb	FAM-5'-ACCGGCAGCCTTTTTCAAAGGGTTTG-3'- TAMRA

A**Supplemental Figure 1. Effect of ABA and temperature on hypothalamic AMPK**

(A) Protein levels of AMPK pathway in the hypothalamus (n= 7 rats/group) of active rats at 21°C and 32 °C (AC21 and AC32) and inactive rats at 21°C and 32 °C (IN21 and IN32). Data expressed as mean \pm SEM.