

THE LANCET

Diabetes & Endocrinology

Supplementary appendix

This appendix formed part of the original submission and has been peer reviewed. We post it as supplied by the authors.

Supplement to: Caleyachetty R, Barber T M, Mohammed N I, et al. Ethnicity-specific BMI cutoffs for obesity based on type 2 diabetes risk in England: a population-based cohort study. *Lancet Diabetes Endocrinol* 2021; published online May 11. [https://doi.org/10.1016/S2213-8587\(21\)00088-7](https://doi.org/10.1016/S2213-8587(21)00088-7).

Supplementary Appendix

| | |
|--|----|
| Table S1. Clinical code list from primary care EHR data source..... | 2 |
| Table S2. ICD-10 code list from secondary care EHR data source..... | 17 |
| Figure S1. Diabetes flowchart representation | 18 |
| Calculating ethnic-specific BMI cut-off points..... | 19 |
| Table S3. Ethnic breakdown of study population..... | 20 |
| Figure S2. Type 2 diabetes mellitus incidence rates during median 6.5 years follow-up by baseline body mass index among main ethnic groups in England. Negative binomial regression model adjusted for age, sex, smoking status and social deprivation..... | 21 |

Table S1. Clinical code list from primary care EHR data source

| Category (code) | Clinical code | Clinical term |
|------------------------------|----------------------|--|
| Type I diabetes mellitus (3) | C108.12 | Type 1 diabetes mellitus |
| Type I diabetes mellitus (3) | C108.13 | Type I diabetes mellitus |
| Type I diabetes mellitus (3) | C108011 | Type I diabetes mellitus with renal complications |
| Type I diabetes mellitus (3) | C108012 | Type 1 diabetes mellitus with renal complications |
| Type I diabetes mellitus (3) | C108211 | Type I diabetes mellitus with neurological complications |
| Type I diabetes mellitus (3) | C108212 | Type 1 diabetes mellitus with neurological complications |
| Type I diabetes mellitus (3) | C108411 | Unstable type I diabetes mellitus |
| Type I diabetes mellitus (3) | C108412 | Unstable type 1 diabetes mellitus |
| Type I diabetes mellitus (3) | C108511 | Type I diabetes mellitus with ulcer |
| Type I diabetes mellitus (3) | C108512 | Type 1 diabetes mellitus with ulcer |
| Type I diabetes mellitus (3) | C108711 | Type I diabetes mellitus with retinopathy |
| Type I diabetes mellitus (3) | C108712 | Type 1 diabetes mellitus with retinopathy |
| Type I diabetes mellitus (3) | C108811 | Type I diabetes mellitus - poor control |
| Type I diabetes mellitus (3) | C108812 | Type 1 diabetes mellitus - poor control |
| Type I diabetes mellitus (3) | C108911 | Type I diabetes mellitus maturity onset |
| Type I diabetes mellitus (3) | C108912 | Type 1 diabetes mellitus maturity onset |
| Type I diabetes mellitus (3) | C108A11 | Type I diabetes mellitus without complication |
| Type I diabetes mellitus (3) | C108D11 | Type I diabetes mellitus with nephropathy |
| Type I diabetes mellitus (3) | C108E11 | Type I diabetes mellitus with hypoglycaemic coma |
| Type I diabetes mellitus (3) | C108E12 | Type 1 diabetes mellitus with hypoglycaemic coma |
| Type I diabetes mellitus (3) | C108F11 | Type I diabetes mellitus with diabetic cataract |
| Type I diabetes mellitus (3) | C108H11 | Type I diabetes mellitus with arthropathy |
| Type I diabetes mellitus (3) | C108J11 | Type I diabetes mellitus with neuropathic arthropathy |
| Type I diabetes mellitus (3) | C108J12 | Type 1 diabetes mellitus with neuropathic arthropathy |
| Type I diabetes mellitus (3) | C10E.00 | Type 1 diabetes mellitus |
| Type I diabetes mellitus (3) | C10E.11 | Type I diabetes mellitus |
| Type I diabetes mellitus (3) | C10E000 | Type 1 diabetes mellitus with renal complications |
| Type I diabetes mellitus (3) | C10E100 | Type 1 diabetes mellitus with ophthalmic complications |
| Type I diabetes mellitus (3) | C10E200 | Type 1 diabetes mellitus with neurological complications |
| Type I diabetes mellitus (3) | C10E300 | Type 1 diabetes mellitus with multiple complications |
| Type I diabetes mellitus (3) | C10E311 | Type I diabetes mellitus with multiple complications |
| Type I diabetes mellitus (3) | C10E400 | Unstable type 1 diabetes mellitus |
| Type I diabetes mellitus (3) | C10E411 | Unstable type I diabetes mellitus |
| Type I diabetes mellitus (3) | C10E500 | Type 1 diabetes mellitus with ulcer |
| Type I diabetes mellitus (3) | C10E511 | Type I diabetes mellitus with ulcer |
| Type I diabetes mellitus (3) | C10E600 | Type 1 diabetes mellitus with gangrene |
| Type I diabetes mellitus (3) | C10E700 | Type 1 diabetes mellitus with retinopathy |
| Type I diabetes mellitus (3) | C10E711 | Type I diabetes mellitus with retinopathy |
| Type I diabetes mellitus (3) | C10E800 | Type 1 diabetes mellitus - poor control |
| Type I diabetes mellitus (3) | C10E900 | Type 1 diabetes mellitus maturity onset |
| Type I diabetes mellitus (3) | C10E911 | Type I diabetes mellitus maturity onset |
| Type I diabetes mellitus (3) | C10EA00 | Type 1 diabetes mellitus without complication |
| Type I diabetes mellitus (3) | C10EA11 | Type I diabetes mellitus without complication |
| Type I diabetes mellitus (3) | C10EB00 | Type 1 diabetes mellitus with mononeuropathy |
| Type I diabetes mellitus (3) | C10EC00 | Type 1 diabetes mellitus with polyneuropathy |

| | | |
|-------------------------------|---------|---|
| Type I diabetes mellitus (3) | C10EC11 | Type I diabetes mellitus with polyneuropathy |
| Type I diabetes mellitus (3) | C10ED00 | Type 1 diabetes mellitus with nephropathy |
| Type I diabetes mellitus (3) | C10EE00 | Type 1 diabetes mellitus with hypoglycaemic coma |
| Type I diabetes mellitus (3) | C10EF00 | Type 1 diabetes mellitus with diabetic cataract |
| Type I diabetes mellitus (3) | C10EG00 | Type 1 diabetes mellitus with peripheral angiopathy |
| Type I diabetes mellitus (3) | C10EH00 | Type 1 diabetes mellitus with arthropathy |
| Type I diabetes mellitus (3) | C10EJ00 | Type 1 diabetes mellitus with neuropathic arthropathy |
| Type I diabetes mellitus (3) | C10EK00 | Type 1 diabetes mellitus with persistent proteinuria |
| Type I diabetes mellitus (3) | C10EL00 | Type 1 diabetes mellitus with persistent microalbuminuria |
| Type I diabetes mellitus (3) | C10EM00 | Type 1 diabetes mellitus with ketoacidosis |
| Type I diabetes mellitus (3) | C10EM11 | Type I diabetes mellitus with ketoacidosis |
| Type I diabetes mellitus (3) | C10EN00 | Type 1 diabetes mellitus with ketoacidotic coma |
| Type I diabetes mellitus (3) | C10EN11 | Type I diabetes mellitus with ketoacidotic coma |
| Type I diabetes mellitus (3) | C10EP00 | Type 1 diabetes mellitus with exudative maculopathy |
| Type I diabetes mellitus (3) | C10EP11 | Type I diabetes mellitus with exudative maculopathy |
| Type I diabetes mellitus (3) | C10EQ00 | Type 1 diabetes mellitus with gastroparesis |
| Type II diabetes mellitus (4) | C109.12 | Type 2 diabetes mellitus |
| Type II diabetes mellitus (4) | C109.13 | Type II diabetes mellitus |
| Type II diabetes mellitus (4) | C109011 | Type II diabetes mellitus with renal complications |
| Type II diabetes mellitus (4) | C109012 | Type 2 diabetes mellitus with renal complications |
| Type II diabetes mellitus (4) | C109111 | Type II diabetes mellitus with ophthalmic complications |
| Type II diabetes mellitus (4) | C109112 | Type 2 diabetes mellitus with ophthalmic complications |
| Type II diabetes mellitus (4) | C109211 | Type II diabetes mellitus with neurological complications |
| Type II diabetes mellitus (4) | C109212 | Type 2 diabetes mellitus with neurological complications |
| Type II diabetes mellitus (4) | C109411 | Type II diabetes mellitus with ulcer |
| Type II diabetes mellitus (4) | C109412 | Type 2 diabetes mellitus with ulcer |
| Type II diabetes mellitus (4) | C109511 | Type II diabetes mellitus with gangrene |
| Type II diabetes mellitus (4) | C109512 | Type 2 diabetes mellitus with gangrene |
| Type II diabetes mellitus (4) | C109611 | Type II diabetes mellitus with retinopathy |
| Type II diabetes mellitus (4) | C109612 | Type 2 diabetes mellitus with retinopathy |
| Type II diabetes mellitus (4) | C109711 | Type II diabetes mellitus - poor control |
| Type II diabetes mellitus (4) | C109712 | Type 2 diabetes mellitus - poor control |
| Type II diabetes mellitus (4) | C109A11 | Type II diabetes mellitus with mononeuropathy |
| Type II diabetes mellitus (4) | C109B11 | Type II diabetes mellitus with polyneuropathy |
| Type II diabetes mellitus (4) | C109C11 | Type II diabetes mellitus with nephropathy |
| Type II diabetes mellitus (4) | C109C12 | Type 2 diabetes mellitus with nephropathy |
| Type II diabetes mellitus (4) | C109D11 | Type II diabetes mellitus with hypoglycaemic coma |
| Type II diabetes mellitus (4) | C109D12 | Type 2 diabetes mellitus with hypoglycaemic coma |
| Type II diabetes mellitus (4) | C109E11 | Type II diabetes mellitus with diabetic cataract |
| Type II diabetes mellitus (4) | C109E12 | Type 2 diabetes mellitus with diabetic cataract |
| Type II diabetes mellitus (4) | C109F11 | Type II diabetes mellitus with peripheral angiopathy |
| Type II diabetes mellitus (4) | C109F12 | Type 2 diabetes mellitus with peripheral angiopathy |
| Type II diabetes mellitus (4) | C109G11 | Type II diabetes mellitus with arthropathy |
| Type II diabetes mellitus (4) | C109G12 | Type 2 diabetes mellitus with arthropathy |
| Type II diabetes mellitus (4) | C109H11 | Type II diabetes mellitus with neuropathic arthropathy |
| Type II diabetes mellitus (4) | C109H12 | Type 2 diabetes mellitus with neuropathic arthropathy |

| | | |
|-------------------------------|---------|--|
| Type II diabetes mellitus (4) | C109J00 | Insulin treated Type 2 diabetes mellitus |
| Type II diabetes mellitus (4) | C109J12 | Insulin treated Type II diabetes mellitus |
| Type II diabetes mellitus (4) | C109K00 | Hyperosmolar non-ketotic state in type 2 diabetes mellitus |
| Type II diabetes mellitus (4) | C10F.00 | Type 2 diabetes mellitus |
| Type II diabetes mellitus (4) | C10F.11 | Type II diabetes mellitus |
| Type II diabetes mellitus (4) | C10F000 | Type 2 diabetes mellitus with renal complications |
| Type II diabetes mellitus (4) | C10F011 | Type II diabetes mellitus with renal complications |
| Type II diabetes mellitus (4) | C10F100 | Type 2 diabetes mellitus with ophthalmic complications |
| Type II diabetes mellitus (4) | C10F200 | Type 2 diabetes mellitus with neurological complications |
| Type II diabetes mellitus (4) | C10F211 | Type II diabetes mellitus with neurological complications |
| Type II diabetes mellitus (4) | C10F300 | Type 2 diabetes mellitus with multiple complications |
| Type II diabetes mellitus (4) | C10F311 | Type II diabetes mellitus with multiple complications |
| Type II diabetes mellitus (4) | C10F400 | Type 2 diabetes mellitus with ulcer |
| Type II diabetes mellitus (4) | C10F411 | Type II diabetes mellitus with ulcer |
| Type II diabetes mellitus (4) | C10F500 | Type 2 diabetes mellitus with gangrene |
| Type II diabetes mellitus (4) | C10F600 | Type 2 diabetes mellitus with retinopathy |
| Type II diabetes mellitus (4) | C10F611 | Type II diabetes mellitus with retinopathy |
| Type II diabetes mellitus (4) | C10F700 | Type 2 diabetes mellitus - poor control |
| Type II diabetes mellitus (4) | C10F711 | Type II diabetes mellitus - poor control |
| Type II diabetes mellitus (4) | C10F900 | Type 2 diabetes mellitus without complication |
| Type II diabetes mellitus (4) | C10F911 | Type II diabetes mellitus without complication |
| Type II diabetes mellitus (4) | C10FA00 | Type 2 diabetes mellitus with mononeuropathy |
| Type II diabetes mellitus (4) | C10FA11 | Type II diabetes mellitus with mononeuropathy |
| Type II diabetes mellitus (4) | C10FB00 | Type 2 diabetes mellitus with polyneuropathy |
| Type II diabetes mellitus (4) | C10FB11 | Type II diabetes mellitus with polyneuropathy |
| Type II diabetes mellitus (4) | C10FC00 | Type 2 diabetes mellitus with nephropathy |
| Type II diabetes mellitus (4) | C10FD00 | Type 2 diabetes mellitus with hypoglycaemic coma |
| Type II diabetes mellitus (4) | C10FD11 | Type II diabetes mellitus with hypoglycaemic coma |
| Type II diabetes mellitus (4) | C10FE00 | Type 2 diabetes mellitus with diabetic cataract |
| Type II diabetes mellitus (4) | C10FE11 | Type II diabetes mellitus with diabetic cataract |
| Type II diabetes mellitus (4) | C10FF00 | Type 2 diabetes mellitus with peripheral angiopathy |
| Type II diabetes mellitus (4) | C10FG00 | Type 2 diabetes mellitus with arthropathy |
| Type II diabetes mellitus (4) | C10FH00 | Type 2 diabetes mellitus with neuropathic arthropathy |
| Type II diabetes mellitus (4) | C10FJ00 | Insulin treated Type 2 diabetes mellitus |
| Type II diabetes mellitus (4) | C10FJ11 | Insulin treated Type II diabetes mellitus |
| Type II diabetes mellitus (4) | C10FK00 | Hyperosmolar non-ketotic state in type 2 diabetes mellitus |
| Type II diabetes mellitus (4) | C10FL00 | Type 2 diabetes mellitus with persistent proteinuria |
| Type II diabetes mellitus (4) | C10FL11 | Type II diabetes mellitus with persistent proteinuria |
| Type II diabetes mellitus (4) | C10FM00 | Type 2 diabetes mellitus with persistent microalbuminuria |
| Type II diabetes mellitus (4) | C10FM11 | Type II diabetes mellitus with persistent microalbuminuria |
| Type II diabetes mellitus (4) | C10FN00 | Type 2 diabetes mellitus with ketoacidosis |
| Type II diabetes mellitus (4) | C10FP00 | Type 2 diabetes mellitus with ketoacidotic coma |
| Type II diabetes mellitus (4) | C10FQ00 | Type 2 diabetes mellitus with exudative maculopathy |
| Type II diabetes mellitus (4) | C10FR00 | Type 2 diabetes mellitus with gastroparesis |
| H/O diabetes (1) | 1434 | H/O: diabetes mellitus |

| | | |
|-----------------------|---------|--|
| H/O diabetes (1) | 14F4.00 | H/O: Admission in last year for diabetes foot problem |
| H/O diabetes (1) | 14P3.00 | H/O: insulin therapy |
| H/O diabetes (1) | 2126300 | Diabetes resolved |
| H/O diabetes (1) | 212H.00 | Diabetes resolved |
| H/O diabetes (1) | 9OL9.00 | Diabetes monitoring deleted |
| Possible diabetes (2) | 13Y1.00 | Diabetic association member |
| Possible diabetes (2) | 3881 | Education score - diabetes |
| Possible diabetes (2) | 3882 | Diabetes well being questionnaire |
| Possible diabetes (2) | 66A..00 | Diabetic monitoring |
| Possible diabetes (2) | 66A1.00 | Initial diabetic assessment |
| Possible diabetes (2) | 66A2.00 | Follow-up diabetic assessment |
| Possible diabetes (2) | 66AM.00 | Diabetic - follow-up default |
| Possible diabetes (2) | 66AZ.00 | Diabetic monitoring NOS |
| Possible diabetes (2) | 66Af.00 | Patient diabetes education review |
| Possible diabetes (2) | 66Ak.00 | Diabetic monitoring - lower risk albumin excretion |
| Possible diabetes (2) | 66Al.00 | Diabetic monitoring - higher risk albumin excretion |
| Possible diabetes (2) | 679L.00 | Health education - diabetes |
| Possible diabetes (2) | 679R.00 | Patient offered diabetes structured education programme |
| Possible diabetes (2) | 8A12.00 | Diabetic crisis monitoring |
| Possible diabetes (2) | 8A17.00 | Self monitoring of blood glucose |
| Possible diabetes (2) | 8A18.00 | Self monitoring of urine glucose |
| Possible diabetes (2) | 8A19.00 | Self monitoring of blood and urine glucose |
| Possible diabetes (2) | 8A1A.00 | Self monitoring urine ketones |
| Possible diabetes (2) | 8CR2.00 | Diabetes clinical management plan |
| Possible diabetes (2) | 8CS0.00 | Diabetes care plan agreed |
| Possible diabetes (2) | 8HHy.00 | Referral to diabetic register |
| Possible diabetes (2) | 8HTe.00 | Referral to diabetes preconception counselling clinic |
| Possible diabetes (2) | 8HTk.00 | Referral to diabetic eye clinic |
| Possible diabetes (2) | 8Hg4.00 | Discharged from care of diabetes specialist nurse |
| Possible diabetes (2) | 8Hj0.00 | Referral to diabetes structured education programme |
| Possible diabetes (2) | 8Hj3.00 | Referral to DAFNE diabetes structured education programme |
| Possible diabetes (2) | 8Hj4.00 | Referral to DESMOND diabetes structured education programme |
| Possible diabetes (2) | 8Hj5.00 | Referral to XPERT diabetes structured education programme |
| Possible diabetes (2) | 8I6F.00 | Diabetic retinopathy screening not indicated |
| Possible diabetes (2) | 8I6G.00 | Diabetic foot examination not indicated |
| Possible diabetes (2) | 8I81.00 | Did not complete diabetes structured education programme |
| Possible diabetes (2) | 8I82.00 | Did not complete DAFNE diabetes structured education program |
| Possible diabetes (2) | 8I83.00 | Did not complete DESMOND diabetes structured education program |
| Possible diabetes (2) | 8I84.00 | Did not complete XPERT diabetes structured education program |
| Possible diabetes (2) | 93C4.00 | Patient consent given for addition to diabetic register |
| Possible diabetes (2) | 9N0m.00 | Seen in diabetic nurse consultant clinic |
| Possible diabetes (2) | 9N0n.00 | Seen in community diabetes specialist clinic |
| Possible diabetes (2) | 9N0o.00 | Seen in community diabetic specialist nurse clinic |

| | | |
|-----------------------|---------|--|
| Possible diabetes (2) | 9N1Q.00 | Seen in diabetic clinic |
| Possible diabetes (2) | 9N1i.00 | Seen in diabetic foot clinic |
| Possible diabetes (2) | 9N1o.00 | Seen in multidisciplinary diabetic clinic |
| Possible diabetes (2) | 9N1v.00 | Seen in diabetic eye clinic |
| Possible diabetes (2) | 9N2d.00 | Seen by diabetologist |
| Possible diabetes (2) | 9N2i.00 | Seen by diabetic liaison nurse |
| Possible diabetes (2) | 9N4I.00 | DNA - Did not attend diabetic clinic |
| Possible diabetes (2) | 9N4p.00 | Did not attend diabetic retinopathy clinic |
| Possible diabetes (2) | 9NM0.00 | Attending diabetes clinic |
| Possible diabetes (2) | 9NN8.00 | Under care of diabetologist |
| Possible diabetes (2) | 9NN9.00 | Under care of diabetes specialist nurse |
| Possible diabetes (2) | 9NND.00 | Under care of diabetic foot screener |
| Possible diabetes (2) | 9NiA.00 | Did not attend diabetes structured education programme |
| Possible diabetes (2) | 9NiD.00 | Did not attend DESMOND diabetes structured education program |
| Possible diabetes (2) | 9NiE.00 | Did not attend XPERT diabetes structured education programme |
| Possible diabetes (2) | 9NI4.00 | Seen by general practitioner special interest in diabetes |
| Possible diabetes (2) | 9OL..00 | Diabetes monitoring admin. |
| Possible diabetes (2) | 9OL1.00 | Attends diabetes monitoring |
| Possible diabetes (2) | 9OL2.00 | Refuses diabetes monitoring |
| Possible diabetes (2) | 9OL3.00 | Diabetes monitoring default |
| Possible diabetes (2) | 9OL4.00 | Diabetes monitoring 1st letter |
| Possible diabetes (2) | 9OL5.00 | Diabetes monitoring 2nd letter |
| Possible diabetes (2) | 9OL6.00 | Diabetes monitoring 3rd letter |
| Possible diabetes (2) | 9OL7.00 | Diabetes monitor.verbal invite |
| Possible diabetes (2) | 9OL8.00 | Diabetes monitor.phone invite |
| Possible diabetes (2) | 9OLA.00 | Diabetes monitor. check done |
| Possible diabetes (2) | 9OLA.11 | Diabetes monitored |
| Possible diabetes (2) | 9OLB.00 | Attended diabetes structured education programme |
| Possible diabetes (2) | 9OLF.00 | Diabetes structured education programme completed |
| Possible diabetes (2) | 9OLG.00 | Attended XPERT diabetes structured education programme |
| Possible diabetes (2) | 9OLH.00 | Attended DAFNE diabetes structured education programme |
| Possible diabetes (2) | 9OLJ.00 | DAFNE diabetes structured education programme completed |
| Possible diabetes (2) | 9OLK.00 | DESMOND diabetes structured education programme completed |
| Possible diabetes (2) | 9OLL.00 | XPERT diabetes structured education programme completed |
| Possible diabetes (2) | 9OLM.00 | Diabetes structured education programme declined |
| Possible diabetes (2) | 9OLZ.00 | Diabetes monitoring admin.NOS |
| Possible diabetes (2) | 9h4..00 | Exception reporting: diabetes quality indicators |
| Possible diabetes (2) | 9h41.00 | Excepted from diabetes qual indicators: Patient unsuitable |
| Possible diabetes (2) | 9h42.00 | Excepted from diabetes quality indicators: Informed dissent |
| Possible diabetes (2) | ZL22500 | Under care of diabetic liaison nurse |
| Possible diabetes (2) | ZLA2500 | Seen by diabetic liaison nurse |
| Possible diabetes (2) | ZLD7500 | Discharge by diabetic liaison nurse |

| | | |
|--------------------------------|---------|--|
| Possible diabetes (2) | ZRB4.00 | Diabetes clinic satisfaction questionnaire |
| Possible diabetes (2) | ZRB4.11 | CSQ - Diabetes clinic satisfaction questionnaire |
| Possible diabetes (2) | ZRB5.00 | Diabetes treatment satisfaction questionnaire |
| Possible diabetes (2) | ZRB5.11 | DTSQ - Diabetes treatment satisfaction questionnaire |
| Possible diabetes (2) | ZRB6.00 | Diabetes wellbeing questionnaire |
| Possible diabetes (2) | ZRB6.11 | DWBQ - Diabetes wellbeing questionnaire |
| Possible diabetes (2) | ZRBa.00 | Education score - diabetes |
| Insulin dependent diabetes (3) | 66An.00 | Diabetes type 1 review |
| Insulin dependent diabetes (3) | C100000 | Diabetes mellitus, juvenile type, no mention of complication |
| Insulin dependent diabetes (3) | C100011 | Insulin dependent diabetes mellitus |
| Insulin dependent diabetes (3) | C101000 | Diabetes mellitus, juvenile type, with ketoacidosis |
| Insulin dependent diabetes (3) | C102000 | Diabetes mellitus, juvenile type, with hyperosmolar coma |
| Insulin dependent diabetes (3) | C103000 | Diabetes mellitus, juvenile type, with ketoacidotic coma |
| Insulin dependent diabetes (3) | C104000 | Diabetes mellitus, juvenile type, with renal manifestation |
| Insulin dependent diabetes (3) | C105000 | Diabetes mellitus, juvenile type, + ophthalmic manifestation |
| Insulin dependent diabetes (3) | C106000 | Diabetes mellitus, juvenile, + neurological manifestation |
| Insulin dependent diabetes (3) | C107000 | Diabetes mellitus, juvenile +peripheral circulatory disorder |
| Insulin dependent diabetes (3) | C107300 | IDDM with peripheral circulatory disorder |
| Insulin dependent diabetes (3) | C108.00 | Insulin dependent diabetes mellitus |
| Insulin dependent diabetes (3) | C108.11 | IDDM-Insulin dependent diabetes mellitus |
| Insulin dependent diabetes (3) | C108.12 | Type 1 diabetes mellitus |
| Insulin dependent diabetes (3) | C108.13 | Type I diabetes mellitus |
| Insulin dependent diabetes (3) | C108000 | Insulin-dependent diabetes mellitus with renal complications |
| Insulin dependent diabetes (3) | C108011 | Type I diabetes mellitus with renal complications |
| Insulin dependent diabetes (3) | C108012 | Type 1 diabetes mellitus with renal complications |
| Insulin dependent diabetes (3) | C108100 | Insulin-dependent diabetes mellitus with ophthalmic comps |
| Insulin dependent diabetes (3) | C108200 | Insulin-dependent diabetes mellitus with neurological comps |
| Insulin dependent diabetes (3) | C108211 | Type I diabetes mellitus with neurological complications |
| Insulin dependent diabetes (3) | C108212 | Type 1 diabetes mellitus with neurological complications |
| Insulin dependent diabetes (3) | C108300 | Insulin dependent diabetes mellitus with multiple complicatn |
| Insulin dependent diabetes (3) | C108400 | Unstable insulin dependant diabetes mellitus |
| Insulin dependent diabetes (3) | C108411 | Unstable type I diabetes mellitus |
| Insulin dependent diabetes (3) | C108412 | Unstable type 1 diabetes mellitus |
| Insulin dependent diabetes (3) | C108500 | Insulin dependent diabetes mellitus with ulcer |
| Insulin dependent diabetes (3) | C108511 | Type I diabetes mellitus with ulcer |
| Insulin dependent diabetes (3) | C108512 | Type 1 diabetes mellitus with ulcer |
| Insulin dependent diabetes (3) | C108600 | Insulin dependent diabetes mellitus with gangrene |
| Insulin dependent diabetes (3) | C108700 | Insulin dependent diabetes mellitus with retinopathy |
| Insulin dependent diabetes (3) | C108711 | Type I diabetes mellitus with retinopathy |
| Insulin dependent diabetes (3) | C108712 | Type 1 diabetes mellitus with retinopathy |
| Insulin dependent diabetes (3) | C108800 | Insulin dependant diabetes mellitus - poor control |
| Insulin dependent diabetes (3) | C108811 | Type I diabetes mellitus - poor control |
| Insulin dependent diabetes (3) | C108812 | Type 1 diabetes mellitus - poor control |

| | | |
|--------------------------------|---------|---|
| Insulin dependent diabetes (3) | C108900 | Insulin dependant diabetes maturity onset |
| Insulin dependent diabetes (3) | C108911 | Type I diabetes mellitus maturity onset |
| Insulin dependent diabetes (3) | C108912 | Type 1 diabetes mellitus maturity onset |
| Insulin dependent diabetes (3) | C108A00 | Insulin-dependent diabetes without complication |
| Insulin dependent diabetes (3) | C108A11 | Type I diabetes mellitus without complication |
| Insulin dependent diabetes (3) | C108B00 | Insulin dependent diabetes mellitus with mononeuropathy |
| Insulin dependent diabetes (3) | C108C00 | Insulin dependent diabetes mellitus with polyneuropathy |
| Insulin dependent diabetes (3) | C108D00 | Insulin dependent diabetes mellitus with nephropathy |
| Insulin dependent diabetes (3) | C108D11 | Type I diabetes mellitus with nephropathy |
| Insulin dependent diabetes (3) | C108E00 | Insulin dependent diabetes mellitus with hypoglycaemic coma |
| Insulin dependent diabetes (3) | C108E11 | Type I diabetes mellitus with hypoglycaemic coma |
| Insulin dependent diabetes (3) | C108E12 | Type 1 diabetes mellitus with hypoglycaemic coma |
| Insulin dependent diabetes (3) | C108F00 | Insulin dependent diabetes mellitus with diabetic cataract |
| Insulin dependent diabetes (3) | C108F11 | Type I diabetes mellitus with diabetic cataract |
| Insulin dependent diabetes (3) | C108G00 | Insulin dependent diab mell with peripheral angiopathy |
| Insulin dependent diabetes (3) | C108H00 | Insulin dependent diabetes mellitus with arthropathy |
| Insulin dependent diabetes (3) | C108H11 | Type I diabetes mellitus with arthropathy |
| Insulin dependent diabetes (3) | C108J00 | Insulin dependent diab mell with neuropathic arthropathy |
| Insulin dependent diabetes (3) | C108J11 | Type I diabetes mellitus with neuropathic arthropathy |
| Insulin dependent diabetes (3) | C108J12 | Type 1 diabetes mellitus with neuropathic arthropathy |
| Insulin dependent diabetes (3) | C10C.12 | Maturity onset diabetes in youth type 1 |
| Insulin dependent diabetes (3) | C10E.00 | Type 1 diabetes mellitus |
| Insulin dependent diabetes (3) | C10E.11 | Type I diabetes mellitus |
| Insulin dependent diabetes (3) | C10E.12 | Insulin dependent diabetes mellitus |
| Insulin dependent diabetes (3) | C10E000 | Type 1 diabetes mellitus with renal complications |
| Insulin dependent diabetes (3) | C10E100 | Type 1 diabetes mellitus with ophthalmic complications |
| Insulin dependent diabetes (3) | C10E112 | Insulin-dependent diabetes mellitus with ophthalmic comps |
| Insulin dependent diabetes (3) | C10E200 | Type 1 diabetes mellitus with neurological complications |
| Insulin dependent diabetes (3) | C10E300 | Type 1 diabetes mellitus with multiple complications |
| Insulin dependent diabetes (3) | C10E311 | Type I diabetes mellitus with multiple complications |
| Insulin dependent diabetes (3) | C10E312 | Insulin dependent diabetes mellitus with multiple complicat |
| Insulin dependent diabetes (3) | C10E400 | Unstable type 1 diabetes mellitus |
| Insulin dependent diabetes (3) | C10E411 | Unstable type I diabetes mellitus |
| Insulin dependent diabetes (3) | C10E412 | Unstable insulin dependent diabetes mellitus |
| Insulin dependent diabetes (3) | C10E500 | Type 1 diabetes mellitus with ulcer |
| Insulin dependent diabetes (3) | C10E511 | Type I diabetes mellitus with ulcer |
| Insulin dependent diabetes (3) | C10E512 | Insulin dependent diabetes mellitus with ulcer |
| Insulin dependent diabetes (3) | C10E600 | Type 1 diabetes mellitus with gangrene |
| Insulin dependent diabetes (3) | C10E700 | Type 1 diabetes mellitus with retinopathy |
| Insulin dependent diabetes (3) | C10E711 | Type I diabetes mellitus with retinopathy |
| Insulin dependent diabetes (3) | C10E712 | Insulin dependent diabetes mellitus with retinopathy |
| Insulin dependent diabetes (3) | C10E800 | Type 1 diabetes mellitus - poor control |
| Insulin dependent diabetes (3) | C10E812 | Insulin dependent diabetes mellitus - poor control |
| Insulin dependent diabetes (3) | C10E900 | Type 1 diabetes mellitus maturity onset |
| Insulin dependent diabetes (3) | C10E911 | Type I diabetes mellitus maturity onset |

| | | |
|------------------------------------|---------|--|
| Insulin dependent diabetes (3) | C10E912 | Insulin dependent diabetes maturity onset |
| Insulin dependent diabetes (3) | C10EA00 | Type 1 diabetes mellitus without complication |
| Insulin dependent diabetes (3) | C10EA11 | Type I diabetes mellitus without complication |
| Insulin dependent diabetes (3) | C10EB00 | Type 1 diabetes mellitus with mononeuropathy |
| Insulin dependent diabetes (3) | C10EC00 | Type 1 diabetes mellitus with polyneuropathy |
| Insulin dependent diabetes (3) | C10EC11 | Type I diabetes mellitus with polyneuropathy |
| Insulin dependent diabetes (3) | C10ED00 | Type 1 diabetes mellitus with nephropathy |
| Insulin dependent diabetes (3) | C10EE00 | Type 1 diabetes mellitus with hypoglycaemic coma |
| Insulin dependent diabetes (3) | C10EF00 | Type 1 diabetes mellitus with diabetic cataract |
| Insulin dependent diabetes (3) | C10EG00 | Type 1 diabetes mellitus with peripheral angiopathy |
| Insulin dependent diabetes (3) | C10EH00 | Type 1 diabetes mellitus with arthropathy |
| Insulin dependent diabetes (3) | C10EJ00 | Type 1 diabetes mellitus with neuropathic arthropathy |
| Insulin dependent diabetes (3) | C10EK00 | Type 1 diabetes mellitus with persistent proteinuria |
| Insulin dependent diabetes (3) | C10EL00 | Type 1 diabetes mellitus with persistent microalbuminuria |
| Insulin dependent diabetes (3) | C10EM00 | Type 1 diabetes mellitus with ketoacidosis |
| Insulin dependent diabetes (3) | C10EM11 | Type I diabetes mellitus with ketoacidosis |
| Insulin dependent diabetes (3) | C10EN00 | Type 1 diabetes mellitus with ketoacidotic coma |
| Insulin dependent diabetes (3) | C10EN11 | Type I diabetes mellitus with ketoacidotic coma |
| Insulin dependent diabetes (3) | C10EP00 | Type 1 diabetes mellitus with exudative maculopathy |
| Insulin dependent diabetes (3) | C10EP11 | Type I diabetes mellitus with exudative maculopathy |
| Insulin dependent diabetes (3) | C10EQ00 | Type 1 diabetes mellitus with gastroparesis |
| Insulin dependent diabetes (3) | C10z000 | Diabetes mellitus, juvenile type, + unspecified complication |
| Insulin dependent diabetes (3) | L180500 | Pre-existing diabetes mellitus, insulin-dependent |
| Insulin dependent diabetes (3) | M21yC00 | Insulin lipohypertrophy |
| Insulin dependent diabetes (3) | M21yC11 | Insulin site lipohypertrophy |
| Insulin dependent diabetes (3) | ZC2C900 | Dietary advice for type I diabetes |
| Insulin dependent diabetes (3) | ZRbH.00 | Perceived control of insulin-dependent diabetes |
| Non insulin dependent diabetes (4) | 66Ao.00 | Diabetes type 2 review |
| Non insulin dependent diabetes (4) | C100100 | Diabetes mellitus, adult onset, no mention of complication |
| Non insulin dependent diabetes (4) | C100111 | Maturity onset diabetes |
| Non insulin dependent diabetes (4) | C100112 | Non-insulin dependent diabetes mellitus |
| Non insulin dependent diabetes (4) | C101100 | Diabetes mellitus, adult onset, with ketoacidosis |
| Non insulin dependent diabetes (4) | C102100 | Diabetes mellitus, adult onset, with hyperosmolar coma |
| Non insulin dependent diabetes (4) | C103100 | Diabetes mellitus, adult onset, with ketoacidotic coma |
| Non insulin dependent diabetes (4) | C104100 | Diabetes mellitus, adult onset, with renal manifestation |
| Non insulin dependent diabetes (4) | C105100 | Diabetes mellitus, adult onset, + ophthalmic manifestation |
| Non insulin dependent diabetes (4) | C106100 | Diabetes mellitus, adult onset, + neurological manifestation |
| Non insulin dependent diabetes (4) | C107100 | Diabetes mellitus, adult, + peripheral circulatory disorder |
| Non insulin dependent diabetes (4) | C107200 | Diabetes mellitus, adult with gangrene |
| Non insulin dependent diabetes (4) | C107400 | NIDDM with peripheral circulatory disorder |
| Non insulin dependent diabetes (4) | C109.00 | Non-insulin dependent diabetes mellitus |
| Non insulin dependent diabetes (4) | C109.11 | NIDDM - Non-insulin dependent diabetes mellitus |
| Non insulin dependent diabetes (4) | C109.12 | Type 2 diabetes mellitus |
| Non insulin dependent diabetes (4) | C109.13 | Type II diabetes mellitus |

| | | |
|------------------------------------|---------|--|
| Non insulin dependent diabetes (4) | C109000 | Non-insulin-dependent diabetes mellitus with renal comps |
| Non insulin dependent diabetes (4) | C109011 | Type II diabetes mellitus with renal complications |
| Non insulin dependent diabetes (4) | C109012 | Type 2 diabetes mellitus with renal complications |
| Non insulin dependent diabetes (4) | C109100 | Non-insulin-dependent diabetes mellitus with ophthalm comps |
| Non insulin dependent diabetes (4) | C109111 | Type II diabetes mellitus with ophthalmic complications |
| Non insulin dependent diabetes (4) | C109112 | Type 2 diabetes mellitus with ophthalmic complications |
| Non insulin dependent diabetes (4) | C109200 | Non-insulin-dependent diabetes mellitus with neuro comps |
| Non insulin dependent diabetes (4) | C109211 | Type II diabetes mellitus with neurological complications |
| Non insulin dependent diabetes (4) | C109212 | Type 2 diabetes mellitus with neurological complications |
| Non insulin dependent diabetes (4) | C109300 | Non-insulin-dependent diabetes mellitus with multiple comps |
| Non insulin dependent diabetes (4) | C109400 | Non-insulin dependent diabetes mellitus with ulcer |
| Non insulin dependent diabetes (4) | C109411 | Type II diabetes mellitus with ulcer |
| Non insulin dependent diabetes (4) | C109412 | Type 2 diabetes mellitus with ulcer |
| Non insulin dependent diabetes (4) | C109500 | Non-insulin dependent diabetes mellitus with gangrene |
| Non insulin dependent diabetes (4) | C109511 | Type II diabetes mellitus with gangrene |
| Non insulin dependent diabetes (4) | C109512 | Type 2 diabetes mellitus with gangrene |
| Non insulin dependent diabetes (4) | C109600 | Non-insulin-dependent diabetes mellitus with retinopathy |
| Non insulin dependent diabetes (4) | C109611 | Type II diabetes mellitus with retinopathy |
| Non insulin dependent diabetes (4) | C109612 | Type 2 diabetes mellitus with retinopathy |
| Non insulin dependent diabetes (4) | C109700 | Non-insulin dependant diabetes mellitus - poor control |
| Non insulin dependent diabetes (4) | C109711 | Type II diabetes mellitus - poor control |
| Non insulin dependent diabetes (4) | C109712 | Type 2 diabetes mellitus - poor control |
| Non insulin dependent diabetes (4) | C109900 | Non-insulin-dependent diabetes mellitus without complication |
| Non insulin dependent diabetes (4) | C109A00 | Non-insulin dependent diabetes mellitus with mononeuropathy |
| Non insulin dependent diabetes (4) | C109A11 | Type II diabetes mellitus with mononeuropathy |
| Non insulin dependent diabetes (4) | C109B00 | Non-insulin dependent diabetes mellitus with polyneuropathy |
| Non insulin dependent diabetes (4) | C109B11 | Type II diabetes mellitus with polyneuropathy |
| Non insulin dependent diabetes (4) | C109C00 | Non-insulin dependent diabetes mellitus with nephropathy |
| Non insulin dependent diabetes (4) | C109C11 | Type II diabetes mellitus with nephropathy |
| Non insulin dependent diabetes (4) | C109C12 | Type 2 diabetes mellitus with nephropathy |
| Non insulin dependent diabetes (4) | C109D00 | Non-insulin dependent diabetes mellitus with hypoglyca coma |
| Non insulin dependent diabetes (4) | C109D11 | Type II diabetes mellitus with hypoglycaemic coma |
| Non insulin dependent diabetes (4) | C109D12 | Type 2 diabetes mellitus with hypoglycaemic coma |
| Non insulin dependent diabetes (4) | C109E00 | Non-insulin depend diabetes mellitus with diabetic cataract |
| Non insulin dependent diabetes (4) | C109E11 | Type II diabetes mellitus with diabetic cataract |
| Non insulin dependent diabetes (4) | C109E12 | Type 2 diabetes mellitus with diabetic cataract |
| Non insulin dependent diabetes (4) | C109F00 | Non-insulin-dependent d m with peripheral angiopath |
| Non insulin dependent diabetes (4) | C109F11 | Type II diabetes mellitus with peripheral angiopathy |
| Non insulin dependent diabetes (4) | C109F12 | Type 2 diabetes mellitus with peripheral angiopathy |
| Non insulin dependent diabetes (4) | C109G00 | Non-insulin dependent diabetes mellitus with arthropathy |

| | | |
|------------------------------------|---------|--|
| Non insulin dependent diabetes (4) | C109G11 | Type II diabetes mellitus with arthropathy |
| Non insulin dependent diabetes (4) | C109G12 | Type 2 diabetes mellitus with arthropathy |
| Non insulin dependent diabetes (4) | C109H00 | Non-insulin dependent d m with neuropathic arthropathy |
| Non insulin dependent diabetes (4) | C109H11 | Type II diabetes mellitus with neuropathic arthropathy |
| Non insulin dependent diabetes (4) | C109H12 | Type 2 diabetes mellitus with neuropathic arthropathy |
| Non insulin dependent diabetes (4) | C109J00 | Insulin treated Type 2 diabetes mellitus |
| Non insulin dependent diabetes (4) | C109J11 | Insulin treated non-insulin dependent diabetes mellitus |
| Non insulin dependent diabetes (4) | C109J12 | Insulin treated Type II diabetes mellitus |
| Non insulin dependent diabetes (4) | C109K00 | Hyperosmolar non-ketotic state in type 2 diabetes mellitus |
| Non insulin dependent diabetes (4) | C10C.11 | Maturity onset diabetes in youth |
| Non insulin dependent diabetes (4) | C10D.00 | Diabetes mellitus autosomal dominant type 2 |
| Non insulin dependent diabetes (4) | C10D.11 | Maturity onset diabetes in youth type 2 |
| Non insulin dependent diabetes (4) | C10ER00 | Latent autoimmune diabetes mellitus in adult |
| Non insulin dependent diabetes (4) | C10F.00 | Type 2 diabetes mellitus |
| Non insulin dependent diabetes (4) | C10F.11 | Type II diabetes mellitus |
| Non insulin dependent diabetes (4) | C10F000 | Type 2 diabetes mellitus with renal complications |
| Non insulin dependent diabetes (4) | C10F011 | Type II diabetes mellitus with renal complications |
| Non insulin dependent diabetes (4) | C10F100 | Type 2 diabetes mellitus with ophthalmic complications |
| Non insulin dependent diabetes (4) | C10F200 | Type 2 diabetes mellitus with neurological complications |
| Non insulin dependent diabetes (4) | C10F211 | Type II diabetes mellitus with neurological complications |
| Non insulin dependent diabetes (4) | C10F300 | Type 2 diabetes mellitus with multiple complications |
| Non insulin dependent diabetes (4) | C10F311 | Type II diabetes mellitus with multiple complications |
| Non insulin dependent diabetes (4) | C10F400 | Type 2 diabetes mellitus with ulcer |
| Non insulin dependent diabetes (4) | C10F411 | Type II diabetes mellitus with ulcer |
| Non insulin dependent diabetes (4) | C10F500 | Type 2 diabetes mellitus with gangrene |
| Non insulin dependent diabetes (4) | C10F600 | Type 2 diabetes mellitus with retinopathy |
| Non insulin dependent diabetes (4) | C10F611 | Type II diabetes mellitus with retinopathy |
| Non insulin dependent diabetes (4) | C10F700 | Type 2 diabetes mellitus - poor control |
| Non insulin dependent diabetes (4) | C10F711 | Type II diabetes mellitus - poor control |
| Non insulin dependent diabetes (4) | C10F900 | Type 2 diabetes mellitus without complication |
| Non insulin dependent diabetes (4) | C10F911 | Type II diabetes mellitus without complication |
| Non insulin dependent diabetes (4) | C10FA00 | Type 2 diabetes mellitus with mononeuropathy |
| Non insulin dependent diabetes (4) | C10FA11 | Type II diabetes mellitus with mononeuropathy |
| Non insulin dependent diabetes (4) | C10FB00 | Type 2 diabetes mellitus with polyneuropathy |
| Non insulin dependent diabetes (4) | C10FB11 | Type II diabetes mellitus with polyneuropathy |
| Non insulin dependent diabetes (4) | C10FC00 | Type 2 diabetes mellitus with nephropathy |
| Non insulin dependent diabetes (4) | C10FD00 | Type 2 diabetes mellitus with hypoglycaemic coma |
| Non insulin dependent diabetes (4) | C10FD11 | Type II diabetes mellitus with hypoglycaemic coma |
| Non insulin dependent diabetes (4) | C10FE00 | Type 2 diabetes mellitus with diabetic cataract |
| Non insulin dependent diabetes (4) | C10FE11 | Type II diabetes mellitus with diabetic cataract |
| Non insulin dependent diabetes (4) | C10FF00 | Type 2 diabetes mellitus with peripheral angiopathy |
| Non insulin dependent diabetes (4) | C10FG00 | Type 2 diabetes mellitus with arthropathy |
| Non insulin dependent diabetes (4) | C10FH00 | Type 2 diabetes mellitus with neuropathic arthropathy |
| Non insulin dependent diabetes (4) | C10FJ00 | Insulin treated Type 2 diabetes mellitus |
| Non insulin dependent diabetes (4) | C10FJ11 | Insulin treated Type II diabetes mellitus |
| Non insulin dependent diabetes (4) | C10FK00 | Hyperosmolar non-ketotic state in type 2 diabetes mellitus |

| | | |
|---------------------------------------|---------|---|
| Non insulin dependent diabetes (4) | C10FL00 | Type 2 diabetes mellitus with persistent proteinuria |
| Non insulin dependent diabetes (4) | C10FL11 | Type II diabetes mellitus with persistent proteinuria |
| Non insulin dependent diabetes (4) | C10FM00 | Type 2 diabetes mellitus with persistent microalbuminuria |
| Non insulin dependent diabetes (4) | C10FM11 | Type II diabetes mellitus with persistent microalbuminuria |
| Non insulin dependent diabetes (4) | C10FN00 | Type 2 diabetes mellitus with ketoacidosis |
| Non insulin dependent diabetes (4) | C10FP00 | Type 2 diabetes mellitus with ketoacidotic coma |
| Non insulin dependent diabetes (4) | C10FQ00 | Type 2 diabetes mellitus with exudative maculopathy |
| Non insulin dependent diabetes (4) | C10FR00 | Type 2 diabetes mellitus with gastroparesis |
| Non insulin dependent diabetes (4) | C10y100 | Diabetes mellitus, adult, + other specified manifestation |
| Non insulin dependent diabetes (4) | C10z100 | Diabetes mellitus, adult onset, + unspecified complication |
| Non insulin dependent diabetes (4) | L180600 | Pre-existing diabetes mellitus, non-insulin-dependent |
| Non insulin dependent diabetes (4) | ZC2CA00 | Dietary advice for type II diabetes |
| Secondary diabetes (5) | C10B.00 | Diabetes mellitus induced by steroids |
| Secondary diabetes (5) | C10B000 | Steroid induced diabetes mellitus without complication |
| Secondary diabetes (5) | C10FS00 | Maternally inherited diabetes mellitus |
| Secondary diabetes (5) | C10G.00 | Secondary pancreatic diabetes mellitus |
| Secondary diabetes (5) | C10G000 | Secondary pancreatic diabetes mellitus without complication |
| Secondary diabetes (5) | C10H.00 | Diabetes mellitus induced by non-steroid drugs |
| Secondary diabetes (5) | C10H000 | DM induced by non-steroid drugs without complication |
| Secondary diabetes (5) | C10N.00 | Secondary diabetes mellitus |
| Secondary diabetes (5) | C10N000 | Secondary diabetes mellitus without complication |
| Secondary diabetes (5) | C10N100 | Cystic fibrosis related diabetes mellitus |
| Secondary diabetes (5) | C11y000 | Steroid induced diabetes |
| Diabetes, not otherwise specified (6) | 13AB.00 | Diabetic lipid lowering diet |
| Diabetes, not otherwise specified (6) | 13AC.00 | Diabetic weight reducing diet |
| Diabetes, not otherwise specified (6) | 13B1.00 | Diabetic diet |
| Diabetes, not otherwise specified (6) | 2BBF.00 | Retinal abnormality - diabetes related |
| Diabetes, not otherwise specified (6) | 2BBL.00 | O/E - diabetic maculopathy present both eyes |
| Diabetes, not otherwise specified (6) | 2BBM.00 | O/E - diabetic maculopathy absent both eyes |
| Diabetes, not otherwise specified (6) | 2BBP.00 | O/E - right eye background diabetic retinopathy |
| Diabetes, not otherwise specified (6) | 2BBQ.00 | O/E - left eye background diabetic retinopathy |
| Diabetes, not otherwise specified (6) | 2BBR.00 | O/E - right eye preproliferative diabetic retinopathy |
| Diabetes, not otherwise specified (6) | 2BBS.00 | O/E - left eye preproliferative diabetic retinopathy |
| Diabetes, not otherwise specified (6) | 2BBT.00 | O/E - right eye proliferative diabetic retinopathy |
| Diabetes, not otherwise specified (6) | 2BBV.00 | O/E - left eye proliferative diabetic retinopathy |
| Diabetes, not otherwise specified (6) | 2BBW.00 | O/E - right eye diabetic maculopathy |
| Diabetes, not otherwise specified (6) | 2BBX.00 | O/E - left eye diabetic maculopathy |
| Diabetes, not otherwise specified (6) | 2BBk.00 | O/E - right eye stable treated proliferative diabetic retinopathy |
| Diabetes, not otherwise specified (6) | 2BBI.00 | O/E - left eye stable treated proliferative diabetic retinopathy |
| Diabetes, not otherwise specified (6) | 2BBo.00 | O/E - sight threatening diabetic retinopathy |
| Diabetes, not otherwise specified (6) | 2G51000 | Foot abnormality - diabetes related |
| Diabetes, not otherwise specified (6) | 2G5A.00 | O/E - Right diabetic foot at risk |
| Diabetes, not otherwise specified (6) | 2G5B.00 | O/E - Left diabetic foot at risk |
| Diabetes, not otherwise specified (6) | 2G5C.00 | Foot abnormality - diabetes related |
| Diabetes, not otherwise specified (6) | 2G5E.00 | O/E - Right diabetic foot at low risk |

| | | |
|---------------------------------------|---------|--|
| Diabetes, not otherwise specified (6) | 2G5F.00 | O/E - Right diabetic foot at moderate risk |
| Diabetes, not otherwise specified (6) | 2G5G.00 | O/E - Right diabetic foot at high risk |
| Diabetes, not otherwise specified (6) | 2G5H.00 | O/E - Right diabetic foot - ulcerated |
| Diabetes, not otherwise specified (6) | 2G5I.00 | O/E - Left diabetic foot at low risk |
| Diabetes, not otherwise specified (6) | 2G5J.00 | O/E - Left diabetic foot at moderate risk |
| Diabetes, not otherwise specified (6) | 2G5K.00 | O/E - Left diabetic foot at high risk |
| Diabetes, not otherwise specified (6) | 2G5L.00 | O/E - Left diabetic foot - ulcerated |
| Diabetes, not otherwise specified (6) | 2G5V.00 | O/E - right chronic diabetic foot ulcer |
| Diabetes, not otherwise specified (6) | 2G5W.00 | O/E - left chronic diabetic foot ulcer |
| Diabetes, not otherwise specified (6) | 66A3.00 | Diabetic on diet only |
| Diabetes, not otherwise specified (6) | 66A4.00 | Diabetic on oral treatment |
| Diabetes, not otherwise specified (6) | 66A5.00 | Diabetic on insulin |
| Diabetes, not otherwise specified (6) | 66A8.00 | Has seen dietician - diabetes |
| Diabetes, not otherwise specified (6) | 66A9.00 | Understands diet - diabetes |
| Diabetes, not otherwise specified (6) | 66AA.11 | Injection sites - diabetic |
| Diabetes, not otherwise specified (6) | 66AD.00 | Fundoscopy - diabetic check |
| Diabetes, not otherwise specified (6) | 66AG.00 | Diabetic drug side effects |
| Diabetes, not otherwise specified (6) | 66AH.00 | Diabetic treatment changed |
| Diabetes, not otherwise specified (6) | 66AI.00 | Diabetic - good control |
| Diabetes, not otherwise specified (6) | 66AJ.00 | Diabetic - poor control |
| Diabetes, not otherwise specified (6) | 66AJ.11 | Unstable diabetes |
| Diabetes, not otherwise specified (6) | 66AJ100 | Brittle diabetes |
| Diabetes, not otherwise specified (6) | 66AJz00 | Diabetic - poor control NOS |
| Diabetes, not otherwise specified (6) | 66AK.00 | Diabetic - cooperative patient |
| Diabetes, not otherwise specified (6) | 66AL.00 | Diabetic-uncooperative patient |
| Diabetes, not otherwise specified (6) | 66AN.00 | Date diabetic treatment start |
| Diabetes, not otherwise specified (6) | 66AO.00 | Date diabetic treatment stopp. |
| Diabetes, not otherwise specified (6) | 66AP.00 | Diabetes: practice programme |
| Diabetes, not otherwise specified (6) | 66AQ.00 | Diabetes: shared care programme |
| Diabetes, not otherwise specified (6) | 66AR.00 | Diabetes management plan given |
| Diabetes, not otherwise specified (6) | 66AS.00 | Diabetic annual review |
| Diabetes, not otherwise specified (6) | 66AT.00 | Annual diabetic blood test |
| Diabetes, not otherwise specified (6) | 66AU.00 | Diabetes care by hospital only |
| Diabetes, not otherwise specified (6) | 66AV.00 | Diabetic on insulin and oral treatment |
| Diabetes, not otherwise specified (6) | 66AW.00 | Diabetic foot risk assessment |
| Diabetes, not otherwise specified (6) | 66AX.00 | Diabetes: shared care in pregnancy - diabetol and obstet |
| Diabetes, not otherwise specified (6) | 66AY.00 | Diabetic diet - good compliance |
| Diabetes, not otherwise specified (6) | 66Aa.00 | Diabetic diet - poor compliance |
| Diabetes, not otherwise specified (6) | 66Ab.00 | Diabetic foot examination |
| Diabetes, not otherwise specified (6) | 66Ac.00 | Diabetic peripheral neuropathy screening |
| Diabetes, not otherwise specified (6) | 66Ag.00 | Insulin needles changed daily |
| Diabetes, not otherwise specified (6) | 66Ah.00 | Insulin needles changed for each injection |
| Diabetes, not otherwise specified (6) | 66Ai.00 | Diabetic 6 month review |
| Diabetes, not otherwise specified (6) | 66Aj.00 | Insulin needles changed less than once a day |
| Diabetes, not otherwise specified (6) | 66Am.00 | Insulin dose changed |
| Diabetes, not otherwise specified (6) | 66Ap.00 | Insulin treatment initiated |
| Diabetes, not otherwise specified (6) | 66Aq.00 | Diabetic foot screen |
| Diabetes, not otherwise specified (6) | 6761 | Diabetic pre-pregnancy counselling |

| | | |
|---------------------------------------|---------|--|
| Diabetes, not otherwise specified (6) | 68A7.00 | Diabetic retinopathy screening |
| Diabetes, not otherwise specified (6) | 68A9.00 | Diabetic retinopathy screening offered |
| Diabetes, not otherwise specified (6) | 68AB.00 | Diabetic digital retinopathy screening offered |
| Diabetes, not otherwise specified (6) | 7276 | Pan retinal photocoagulation for diabetes |
| Diabetes, not otherwise specified (6) | 7L10000 | Continuous subcutaneous infusion of insulin |
| Diabetes, not otherwise specified (6) | 7L19800 | Subcutaneous injection of insulin |
| Diabetes, not otherwise specified (6) | 889A.00 | Diab mellit insulin-glucose infus acute myocardial infarct |
| Diabetes, not otherwise specified (6) | 8A13.00 | Diabetic stabilisation |
| Diabetes, not otherwise specified (6) | 8B3I.00 | Diabetes medication review |
| Diabetes, not otherwise specified (6) | 8BL2.00 | Patient on maximal tolerated therapy for diabetes |
| Diabetes, not otherwise specified (6) | 8CA4I00 | Pt advised re diabetic diet |
| Diabetes, not otherwise specified (6) | 8CAQ.00 | Advice about blood glucose control |
| Diabetes, not otherwise specified (6) | 8CP2.00 | Transition of diabetes care options discussed |
| Diabetes, not otherwise specified (6) | 8H2J.00 | Admit diabetic emergency |
| Diabetes, not otherwise specified (6) | 8H3O.00 | Non-urgent diabetic admission |
| Diabetes, not otherwise specified (6) | 8H7r.00 | Refer to diabetic foot screener |
| Diabetes, not otherwise specified (6) | 8HBG.00 | Diabetic retinopathy 12 month review |
| Diabetes, not otherwise specified (6) | 8HBH.00 | Diabetic retinopathy 6 month review |
| Diabetes, not otherwise specified (6) | 8HLE.00 | Diabetology D.V. done |
| Diabetes, not otherwise specified (6) | 8HI1.00 | Referral for diabetic retinopathy screening |
| Diabetes, not otherwise specified (6) | 8I3W.00 | Diabetic foot examination declined |
| Diabetes, not otherwise specified (6) | 8I3X.00 | Diabetic retinopathy screening refused |
| Diabetes, not otherwise specified (6) | 8I3k.00 | Insulin therapy declined |
| Diabetes, not otherwise specified (6) | 8I57.00 | Patient held diabetic record declined |
| Diabetes, not otherwise specified (6) | 9360 | Patient held diabetic record issued |
| Diabetes, not otherwise specified (6) | 9OLD.00 | Diabetic patient unsuitable for digital retinal photography |
| Diabetes, not otherwise specified (6) | C10..00 | Diabetes mellitus |
| Diabetes, not otherwise specified (6) | C100.00 | Diabetes mellitus with no mention of complication |
| Diabetes, not otherwise specified (6) | C100z00 | Diabetes mellitus NOS with no mention of complication |
| Diabetes, not otherwise specified (6) | C101.00 | Diabetes mellitus with ketoacidosis |
| Diabetes, not otherwise specified (6) | C101y00 | Other specified diabetes mellitus with ketoacidosis |
| Diabetes, not otherwise specified (6) | C101z00 | Diabetes mellitus NOS with ketoacidosis |
| Diabetes, not otherwise specified (6) | C102.00 | Diabetes mellitus with hyperosmolar coma |
| Diabetes, not otherwise specified (6) | C102z00 | Diabetes mellitus NOS with hyperosmolar coma |
| Diabetes, not otherwise specified (6) | C103.00 | Diabetes mellitus with ketoacidotic coma |
| Diabetes, not otherwise specified (6) | C103y00 | Other specified diabetes mellitus with coma |
| Diabetes, not otherwise specified (6) | C103z00 | Diabetes mellitus NOS with ketoacidotic coma |
| Diabetes, not otherwise specified (6) | C104.00 | Diabetes mellitus with renal manifestation |
| Diabetes, not otherwise specified (6) | C104.11 | Diabetic nephropathy |
| Diabetes, not otherwise specified (6) | C104y00 | Other specified diabetes mellitus with renal complications |
| Diabetes, not otherwise specified (6) | C104z00 | Diabetes mellitus with nephropathy NOS |
| Diabetes, not otherwise specified (6) | C105.00 | Diabetes mellitus with ophthalmic manifestation |
| Diabetes, not otherwise specified (6) | C105y00 | Other specified diabetes mellitus with ophthalmic complicatn |
| Diabetes, not otherwise specified (6) | C105z00 | Diabetes mellitus NOS with ophthalmic manifestation |
| Diabetes, not otherwise specified (6) | C106.00 | Diabetes mellitus with neurological manifestation |

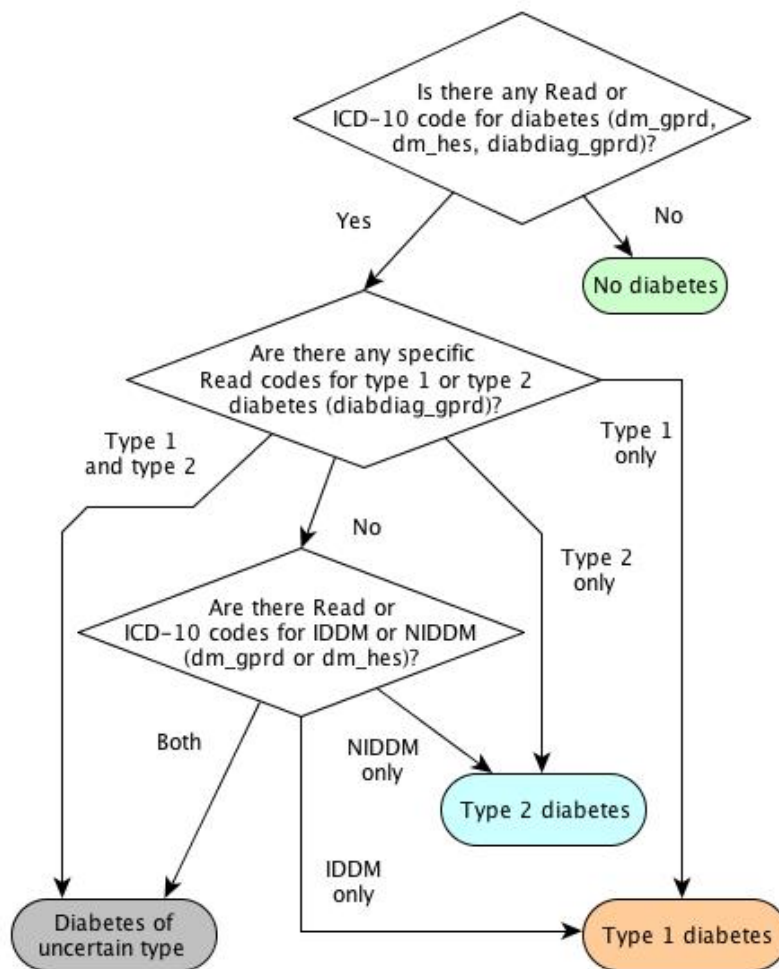
| | | |
|---------------------------------------|---------|--|
| Diabetes, not otherwise specified (6) | C106.11 | Diabetic amyotrophy |
| Diabetes, not otherwise specified (6) | C106.12 | Diabetes mellitus with neuropathy |
| Diabetes, not otherwise specified (6) | C106.13 | Diabetes mellitus with polyneuropathy |
| Diabetes, not otherwise specified (6) | C106y00 | Other specified diabetes mellitus with neurological comps |
| Diabetes, not otherwise specified (6) | C106z00 | Diabetes mellitus NOS with neurological manifestation |
| Diabetes, not otherwise specified (6) | C107.00 | Diabetes mellitus with peripheral circulatory disorder |
| Diabetes, not otherwise specified (6) | C107.11 | Diabetes mellitus with gangrene |
| Diabetes, not otherwise specified (6) | C107.12 | Diabetes with gangrene |
| Diabetes, not otherwise specified (6) | C107z00 | Diabetes mellitus NOS with peripheral circulatory disorder |
| Diabetes, not otherwise specified (6) | C108y00 | Other specified diabetes mellitus with multiple comps |
| Diabetes, not otherwise specified (6) | C108z00 | Unspecified diabetes mellitus with multiple complications |
| Diabetes, not otherwise specified (6) | C10A.00 | Malnutrition-related diabetes mellitus |
| Diabetes, not otherwise specified (6) | C10A000 | Malnutrition-related diabetes mellitus with coma |
| Diabetes, not otherwise specified (6) | C10A100 | Malnutrition-related diabetes mellitus with ketoacidosis |
| Diabetes, not otherwise specified (6) | C10C.00 | Diabetes mellitus autosomal dominant |
| Diabetes, not otherwise specified (6) | C10M.00 | Lipoatrophic diabetes mellitus |
| Diabetes, not otherwise specified (6) | C10y.00 | Diabetes mellitus with other specified manifestation |
| Diabetes, not otherwise specified (6) | C10yy00 | Other specified diabetes mellitus with other spec comps |
| Diabetes, not otherwise specified (6) | C10yz00 | Diabetes mellitus NOS with other specified manifestation |
| Diabetes, not otherwise specified (6) | C10z.00 | Diabetes mellitus with unspecified complication |
| Diabetes, not otherwise specified (6) | C10zy00 | Other specified diabetes mellitus with unspecified comps |
| Diabetes, not otherwise specified (6) | C10zz00 | Diabetes mellitus NOS with unspecified complication |
| Diabetes, not otherwise specified (6) | C314.11 | Renal diabetes |
| Diabetes, not otherwise specified (6) | C350011 | Bronzed diabetes |
| Diabetes, not otherwise specified (6) | Cyu2.00 | [X]Diabetes mellitus |
| Diabetes, not otherwise specified (6) | Cyu2000 | [X]Other specified diabetes mellitus |
| Diabetes, not otherwise specified (6) | F171100 | Autonomic neuropathy due to diabetes |
| Diabetes, not otherwise specified (6) | F345000 | Diabetic mononeuritis multiplex |
| Diabetes, not otherwise specified (6) | F35z000 | Diabetic mononeuritis NOS |
| Diabetes, not otherwise specified (6) | F372.00 | Polyneuropathy in diabetes |
| Diabetes, not otherwise specified (6) | F372.11 | Diabetic polyneuropathy |
| Diabetes, not otherwise specified (6) | F372.12 | Diabetic neuropathy |
| Diabetes, not otherwise specified (6) | F372000 | Acute painful diabetic neuropathy |
| Diabetes, not otherwise specified (6) | F372100 | Chronic painful diabetic neuropathy |
| Diabetes, not otherwise specified (6) | F372200 | Asymptomatic diabetic neuropathy |
| Diabetes, not otherwise specified (6) | F381300 | Myasthenic syndrome due to diabetic amyotrophy |
| Diabetes, not otherwise specified (6) | F381311 | Diabetic amyotrophy |
| Diabetes, not otherwise specified (6) | F3y0.00 | Diabetic mononeuropathy |
| Diabetes, not otherwise specified (6) | F420.00 | Diabetic retinopathy |
| Diabetes, not otherwise specified (6) | F420000 | Background diabetic retinopathy |
| Diabetes, not otherwise specified (6) | F420100 | Proliferative diabetic retinopathy |
| Diabetes, not otherwise specified (6) | F420200 | Preproliferative diabetic retinopathy |
| Diabetes, not otherwise specified (6) | F420300 | Advanced diabetic maculopathy |
| Diabetes, not otherwise specified (6) | F420400 | Diabetic maculopathy |
| Diabetes, not otherwise specified (6) | F420500 | Advanced diabetic retinal disease |

| | | |
|---------------------------------------|---------|--|
| Diabetes, not otherwise specified (6) | F420600 | Non proliferative diabetic retinopathy |
| Diabetes, not otherwise specified (6) | F420700 | High risk proliferative diabetic retinopathy |
| Diabetes, not otherwise specified (6) | F420800 | High risk non proliferative diabetic retinopathy |
| Diabetes, not otherwise specified (6) | F420z00 | Diabetic retinopathy NOS |
| Diabetes, not otherwise specified (6) | F440700 | Diabetic iritis |
| Diabetes, not otherwise specified (6) | F464000 | Diabetic cataract |
| Diabetes, not otherwise specified (6) | G73y000 | Diabetic peripheral angiopathy |
| Diabetes, not otherwise specified (6) | K01x100 | Nephrotic syndrome in diabetes mellitus |
| Diabetes, not otherwise specified (6) | K01x111 | Kimmelstiel - Wilson disease |
| Diabetes, not otherwise specified (6) | L180X00 | Pre-existing diabetes mellitus, unspecified |
| Diabetes, not otherwise specified (6) | M037200 | Cellulitis in diabetic foot |
| Diabetes, not otherwise specified (6) | M271000 | Ischaemic ulcer diabetic foot |
| Diabetes, not otherwise specified (6) | M271100 | Neuropathic diabetic ulcer - foot |
| Diabetes, not otherwise specified (6) | M271200 | Mixed diabetic ulcer - foot |
| Diabetes, not otherwise specified (6) | N030000 | Diabetic cheiroarthropathy |
| Diabetes, not otherwise specified (6) | N030011 | Diabetic cheiroopathy |
| Diabetes, not otherwise specified (6) | N030100 | Diabetic Charcot arthropathy |
| Diabetes, not otherwise specified (6) | Q441.00 | Neonatal diabetes mellitus |
| Diabetes, not otherwise specified (6) | R054200 | [D]Gangrene of toe in diabetic |
| Diabetes, not otherwise specified (6) | R054300 | [D]Widespread diabetic foot gangrene |
| Diabetes, not otherwise specified (6) | TJ23.00 | Adverse reaction to insulins and antidiabetic agents |
| Diabetes, not otherwise specified (6) | TJ23z00 | Adverse reaction to insulins and antidiabetic agents NOS |
| Diabetes, not otherwise specified (6) | U602311 | [X] Adverse reaction to insulins and antidiabetic agents |
| Diabetes, not otherwise specified (6) | ZC2C800 | Dietary advice for diabetes mellitus |
| Diabetes, not otherwise specified (6) | ZV65312 | [V]Dietary counselling in diabetes mellitus |
| Diabetes excluded (7) | 110..00 | Diabetes mellitus excluded |

Table S2. ICD-10 code list from secondary care EHR data source

| Category (code) | ICD10 code | ICD10 term |
|--------------------------------------|-------------------|---|
| Insulin dependent diabetes (3) | E10 | Insulin-dependent diabetes mellitus |
| Non insulin dependent diabetes (4) | E11 | Non-insulin-dependent diabetes mellitus |
| Secondary diabetes (5) | E12 | Malnutrition-related diabetes mellitus |
| Secondary diabetes (5) | O242 | Diabetes mellitus in pregnancy: Pre-existing malnutrition-related diabetes mellitus |
| Diabetes not otherwise specified (6) | E13 | Other specified diabetes mellitus |
| Diabetes not otherwise specified (6) | E14 | Unspecified diabetes mellitus |
| Diabetes not otherwise specified (6) | G590 | Diabetic mononeuropathy |
| Diabetes not otherwise specified (6) | G632 | Diabetic polyneuropathy |
| Diabetes not otherwise specified (6) | H280 | Diabetic cataract |
| Diabetes not otherwise specified (6) | H360 | Diabetic retinopathy |
| Diabetes not otherwise specified (6) | M142 | Diabetic arthropathy |
| Diabetes not otherwise specified (6) | N083 | Glomerular disorders in diabetes mellitus |
| Diabetes not otherwise specified (6) | O240 | Diabetes mellitus in pregnancy: Pre-existing diabetes mellitus, insulin-dependent |
| Diabetes not otherwise specified (6) | O241 | Diabetes mellitus in pregnancy: Pre-existing diabetes mellitus, non-insulin-dependent |
| Diabetes not otherwise specified (6) | O243 | Diabetes mellitus in pregnancy: Pre-existing diabetes mellitus, unspecified |

Figure S1. Diabetes flowchart representation



Consider diagnosis codes recorded in CPRD (Read) and HES (ICD-10) on or before the date on which diabetes status is to be ascertained.

Calculating ethnic-specific BMI cut-off points

As our models included fractional polynomials, the back calculations were performed using numerical rather than analytical approach. Consider the log incidence rate (ir) of T2DM for the fitted model which takes the form:

$$\log(ir) = \beta_0 + \beta_1 bmi^{p1} + \beta_2 bmi^{p2} + \beta_{31} eth_1 + \beta_{32} eth_2 + \dots$$

where bmi is body mass index, eth_i is dummy variable for ethnicity group i, β 's are the respective estimated coefficients and p1 and p2 are estimated powers for bmi.

After estimating all coefficients and powers for the fractional polynomials as well as predicted ir at bmi=30 for the white ethnic group (all done using stata), we can rearrange the above equation as follows:

$$\beta_1 bmi^{p1} + \beta_2 bmi^{p2} + (\beta_0 + \beta_{31} eth_1 + \beta_{32} eth_2 + \dots) - \log(ir) = 0$$

$$\beta_1 bmi^{p1} + \beta_2 bmi^{p2} + \underbrace{(\beta_0 + \beta_{31} eth_1 + \beta_{32} eth_2 + \dots) - \log(ir)}_C = 0$$

$$\beta_1 bmi^{p1} + \beta_2 bmi^{p2} + C = 0 \dots *$$

And then calculate the bmi cut-off for each the remaining ethnicity groups by looking for a bmi value that solves the equation (*) above to zero.

Table S3. Ethnic breakdown of study population

| Ethnic group | n | % |
|-----------------|-----------|--------|
| White | 1,333,816 | 90.56 |
| Black African | 35,342 | 2.40 |
| Black Caribbean | 4,394 | 0.30 |
| Black British | 5,250 | 0.36 |
| Black Other | 4,168 | 0.28 |
| Bangladeshi | 5,316 | 0.36 |
| Indian | 48,353 | 3.28 |
| Nepali | 937 | 0.06 |
| Pakistani | 18,565 | 1.26 |
| Sri Lankan | 2,269 | 0.15 |
| Tamil | 0.15 | 0.01 |
| Chinese | 10,934 | 0.74 |
| Arab | 2,764 | 0.19 |
| Missing | 587 | 0.04 |
| Total | 1,472,819 | 100.00 |

Figure S2. Type 2 diabetes mellitus incidence rates during median 6.5 years follow-up by baseline body mass index among White, black, South Asian, Chinese and Arab populations in England. Negative binomial regression model adjusted for age, sex, smoking status and social deprivation.

