

## ON-LINE MATERIAL

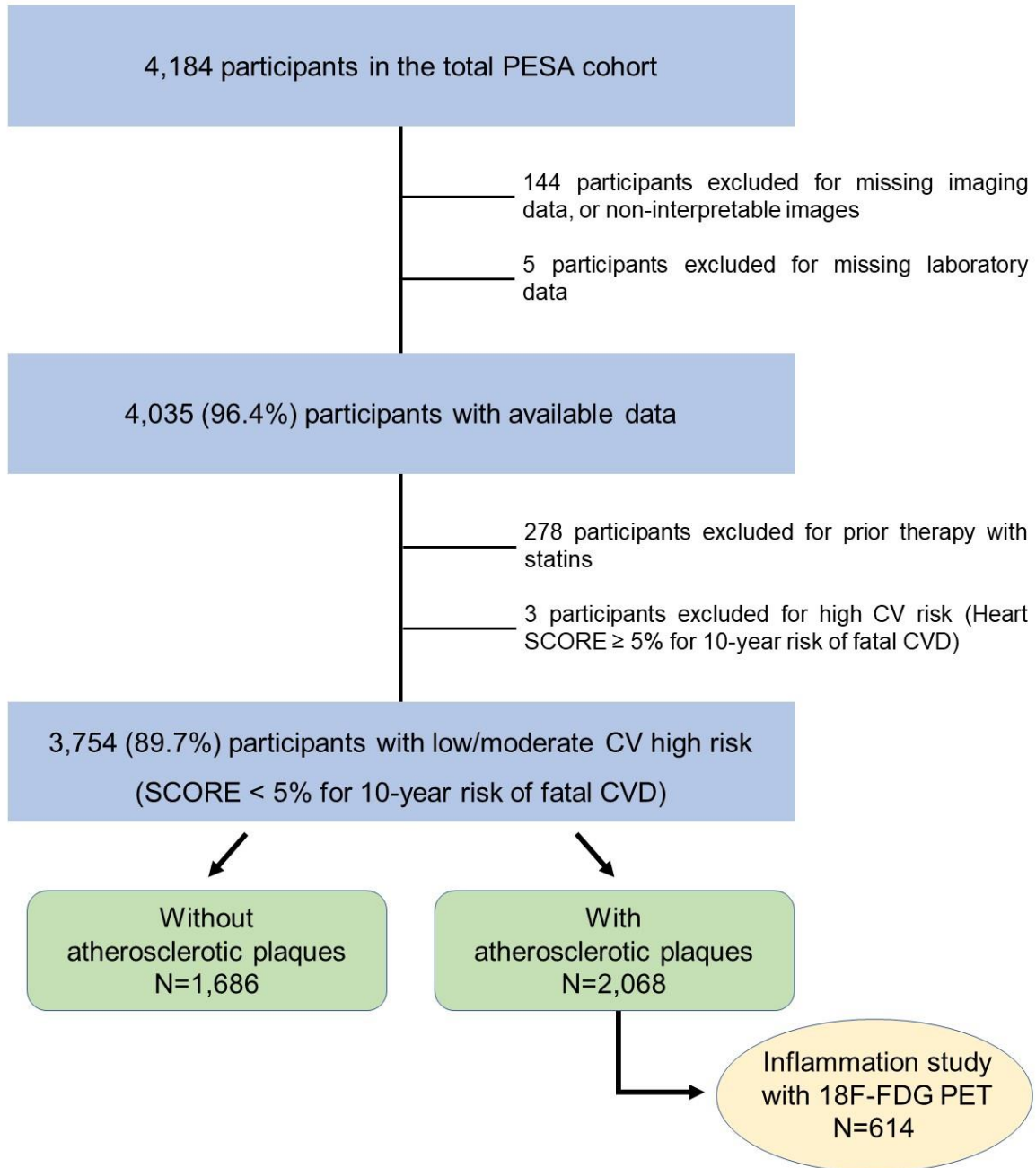
**eFigure 1. Study Population Flowchart.**

**eFigure 2. Interaction Between Cardiovascular Risk Factors and Triglycerides for the Prevalence of Subclinical Atherosclerosis.**

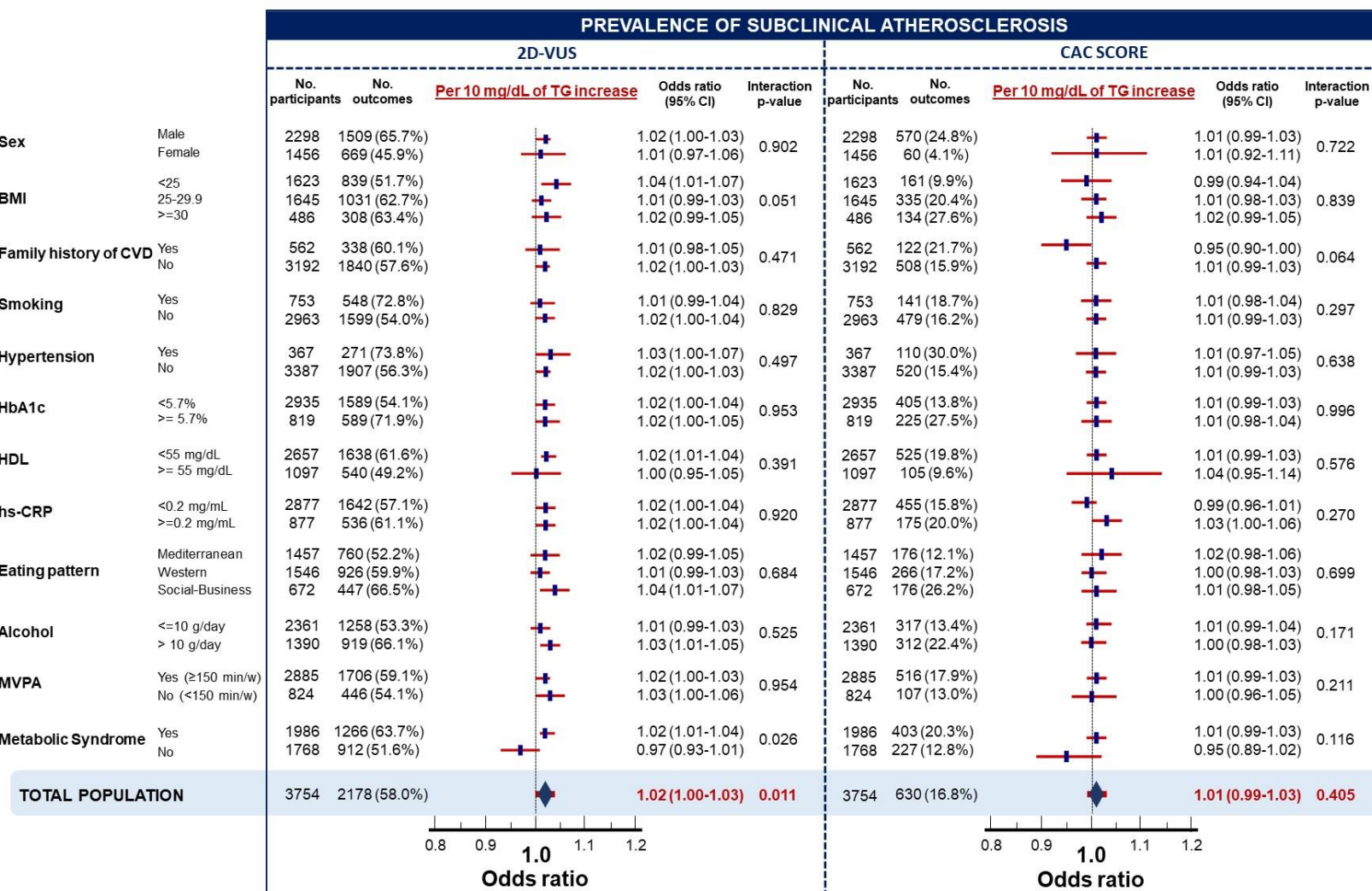
**eFigure 3. Prevalence and Extension of Coronary Artery Calcium (CAC) Score According to Triglyceride Levels.**

**eFigure 4. Association Between Coronary Artery Calcium (CAC) Score and Triglyceride Levels by Groups of Low-Density Lipoprotein Cholesterol.**

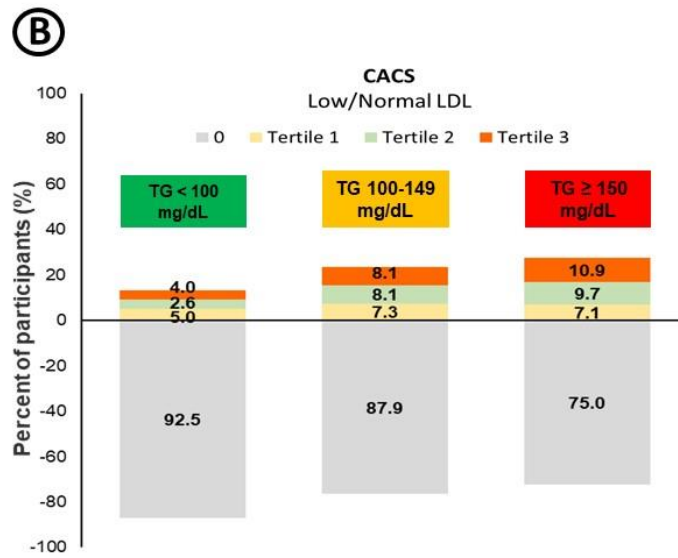
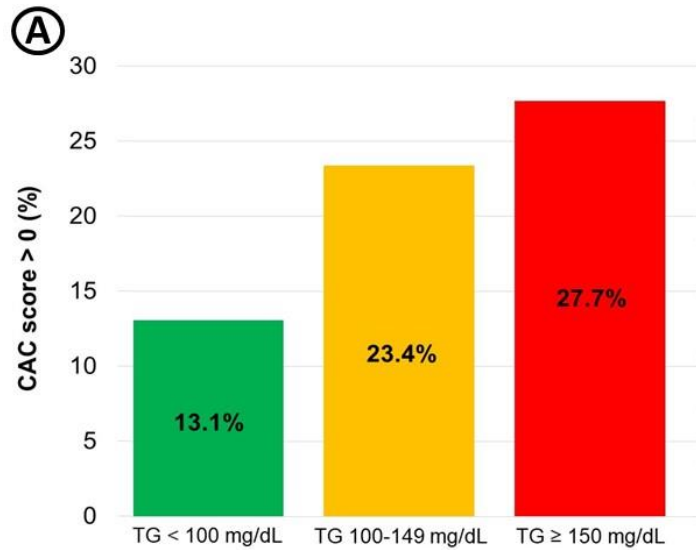
**eFigure 1. Study Population Flowchart.**



**eFigure 2. Interaction Between Cardiovascular Risk Factors and Triglycerides for the Prevalence of Subclinical Atherosclerosis.**



**eFigure 3. Prevalence and Extension of Coronary Artery Calcium (CAC) Score According to Triglyceride Levels.**



**(C)**

CAC score > 0				
TG groups	No. participants	No. outcomes	Odds ratio (95% CI)	p-value
TG < 100 mg/dL	2580	338	Ref	
TG 100-149 mg/dL	781	183	1.00 (0.79-1.26)	0.974
TG ≥ 150 mg/dL	393	109	1.11 (0.83-1.49)	0.467

0.5    1.0    2  
Odds ratio

**eFigure 4. Association Between Coronary Artery Calcium (CAC) Score and Triglyceride Levels by Groups of Low-Density Lipoprotein Cholesterol.**

