

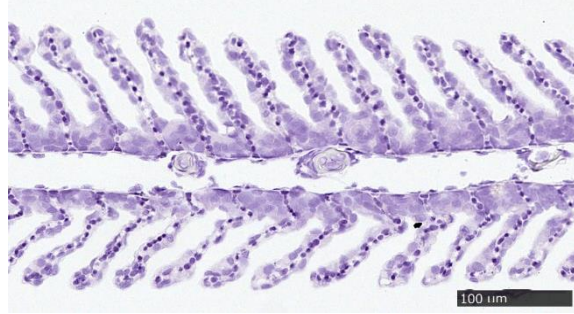
# ***In situ* hybridization with probes targeting B22R1 and D13L**

**RNAscope 2.5 HD Detection kit – RED**

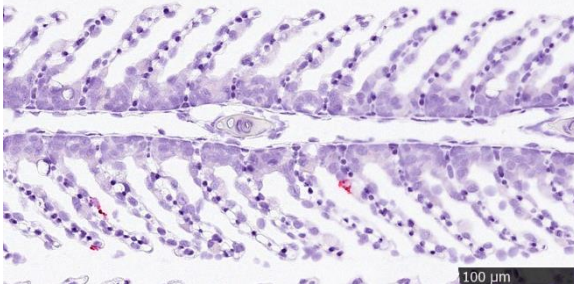
L53, 1 DPE, RNAscope probe: B22R1 (ct - 33,4):



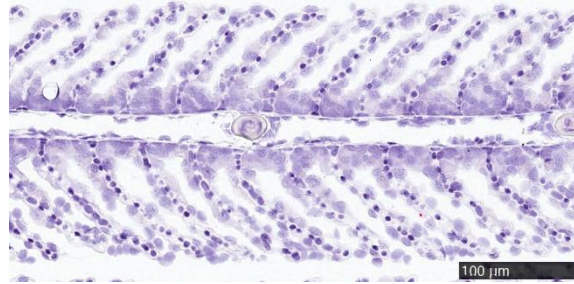
L53, 1 DPE, RNAscope probe: D13L (ct - 37,3):



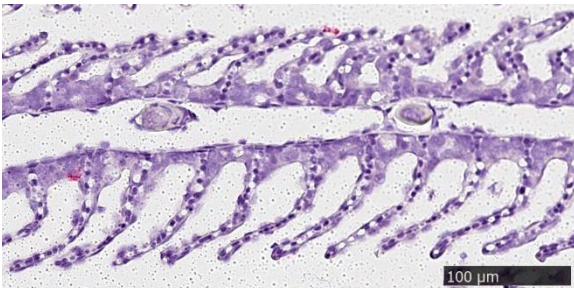
L54, 1 DPE, RNAscope probe: B22R1 (ct - 31,1):



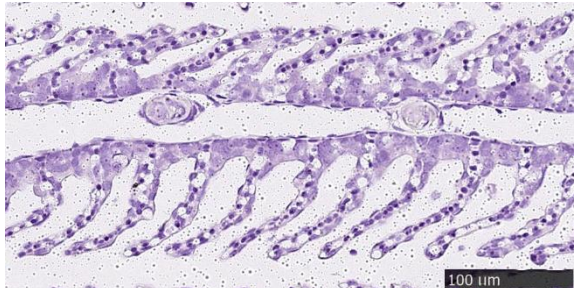
L54, 1 DPE, RNAscope probe: D13L (ct - 35,9):



L55, 1 DPE, RNAscope probe: B22R1 (ct - 30,4):



L53, 1 DPE, RNAscope probe: D13L (ct - 34,6):



L77, 3 DPE, RNAscope probe: B22R1 (ct - 28,6):



L77, 3 DPE, RNAscope probe: D13L (ct - 24,7):

