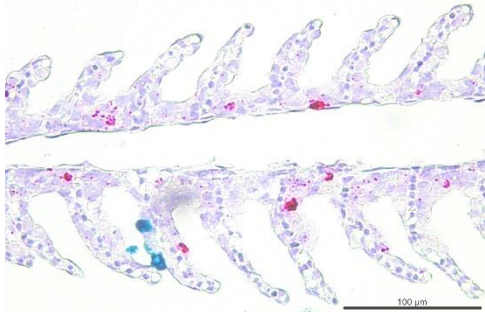


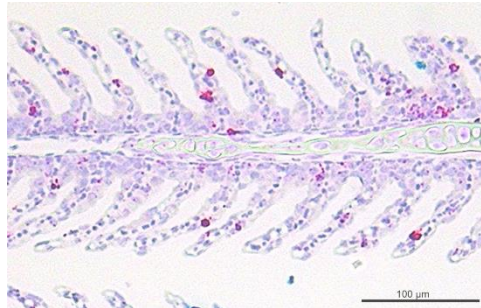
***In situ* hybridization with probes targeting D13L and GzmA at 7 DPE**

RNAscope 2.5 HD Duplex Detection kit (Chromogenic)

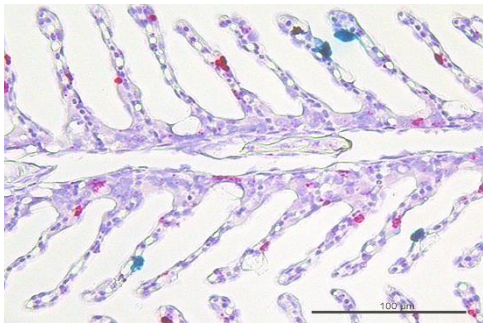
E.S, L93, GzmA (ct - 26,9) and D13L (ct - 25,1):



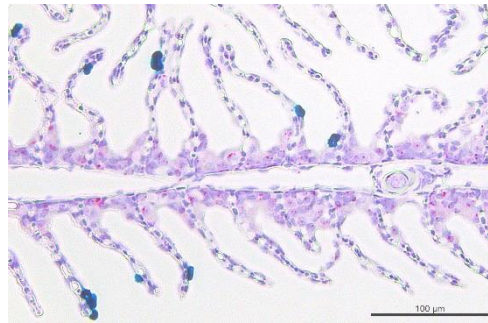
E.S, L94, GzmA (ct - 28,7) and D13L (ct - 28,5):



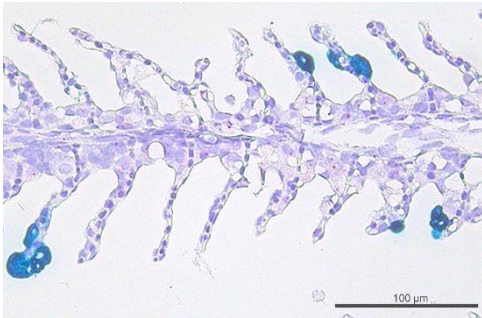
E.S, L95, GzmA (ct - 26,5) and D13L (ct - 26,3):



E.H, L98, GzmA (ct - 32,9) and D13L (ct - 24,0):



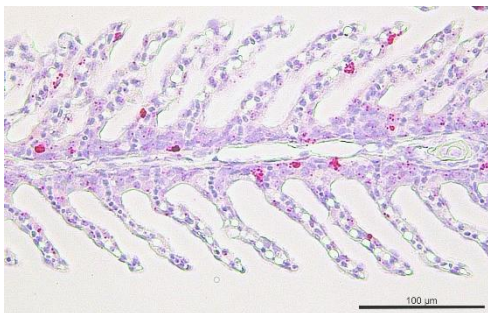
E.H, L100, GzmA (ct - 31,7) and D13L (ct - 27,7):



E.H, L101, GzmA (ct - 31,4) and D13L (ct - 24,0):



C.S, L85, GzmA (ct - 28,8) and D13L (ct - N/A):



C.H, L89, GzmA (ct - 32,1) and D13L (ct - N/A):

