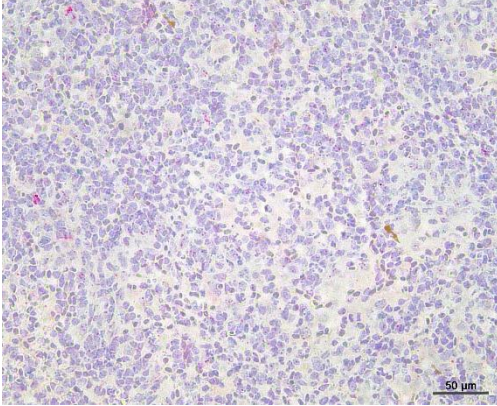
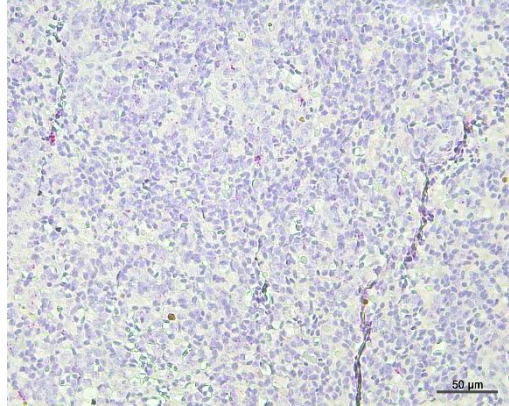


***In situ* hybridization with probes targeting D13L and GzmA at 14 DPE**  
**RNAscope 2.5 HD Duplex Detection kit (Chromogenic)**

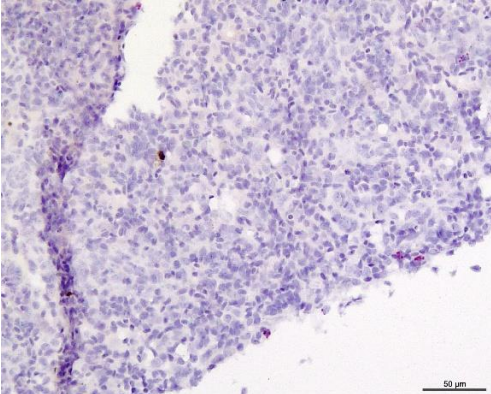
E.S, L134, GzmA (ct - 30,7) and D13L (ct - N/A):



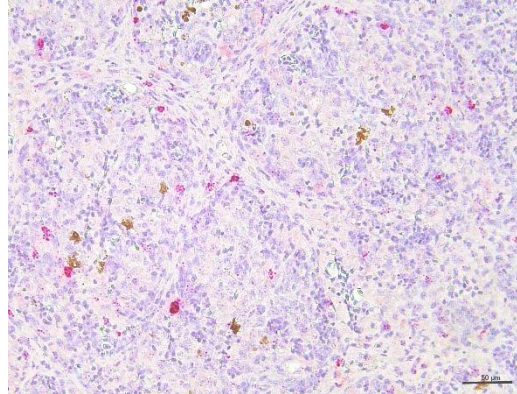
E.S, L137, GzmA (ct - 31,7) and D13L (ct - N/A):



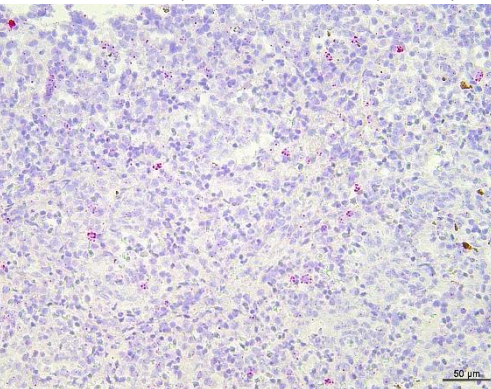
E.S, L138, GzmA (ct - 31,0) and D13L (ct - N/A):



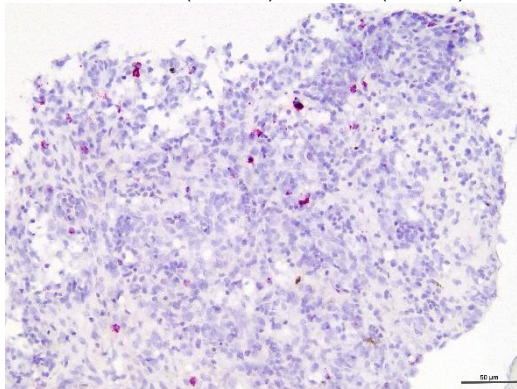
E.H, L139, GzmA (ct - 27,8) and D13L (ct - 36,4):



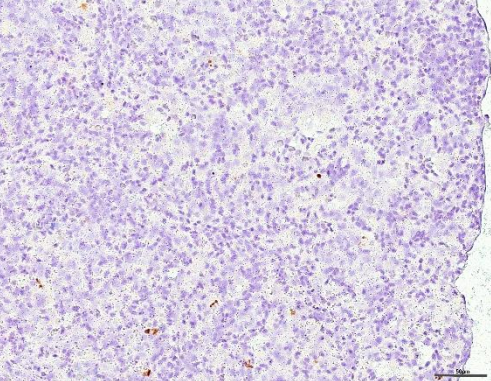
E.H, L140, GzmA (ct - 28,0) and D13L (ct - N/A):



E.H, L141, GzmA (ct - 26,1) and D13L (ct - N/A):



C.S, L128, GzmA (ct - 31,4) and D13L (ct - N/A):



C.H, L132, GzmA (ct - 29,1) and D13L (ct - N/A):

