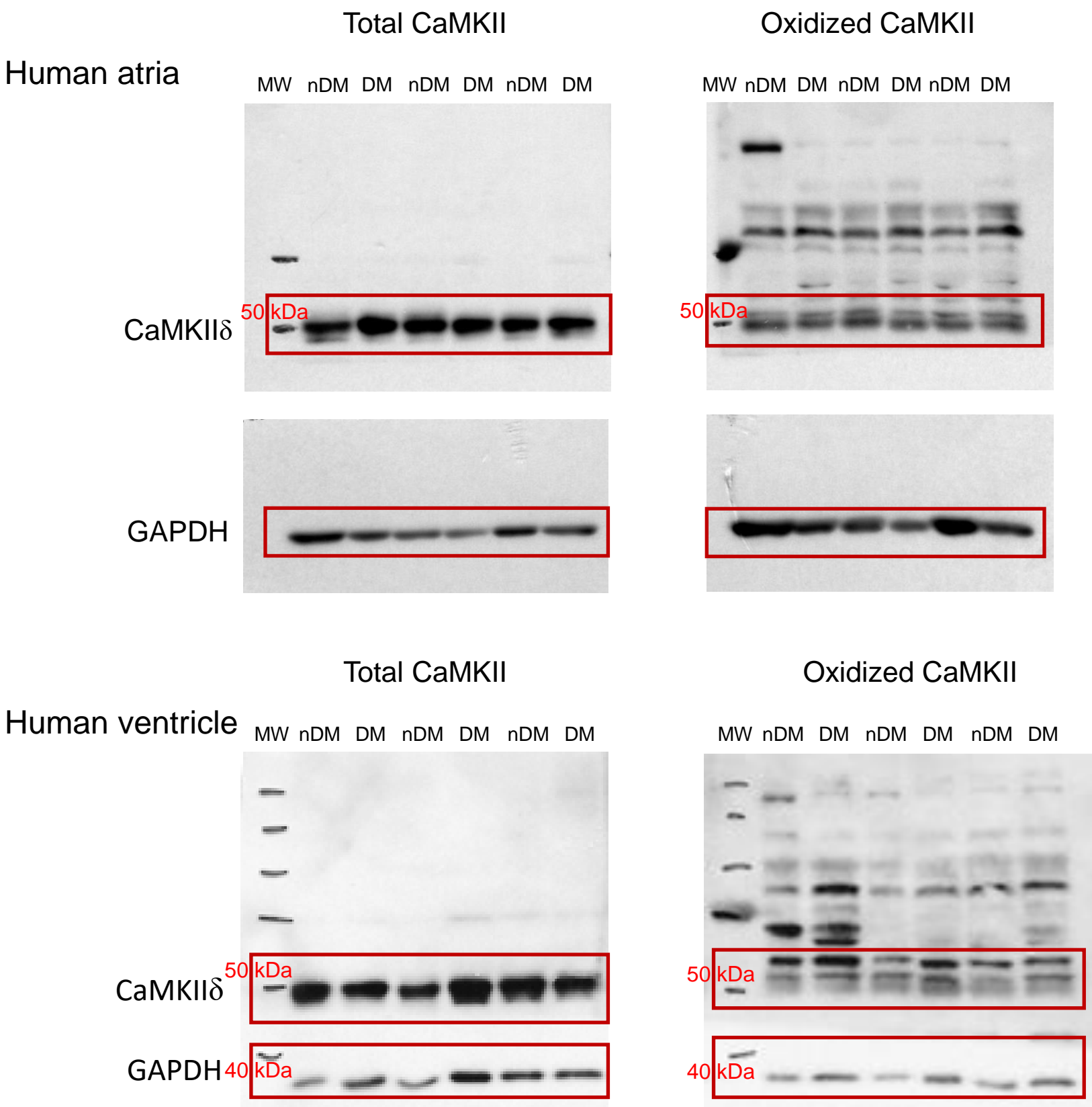


Full unedited gels for Figure 1

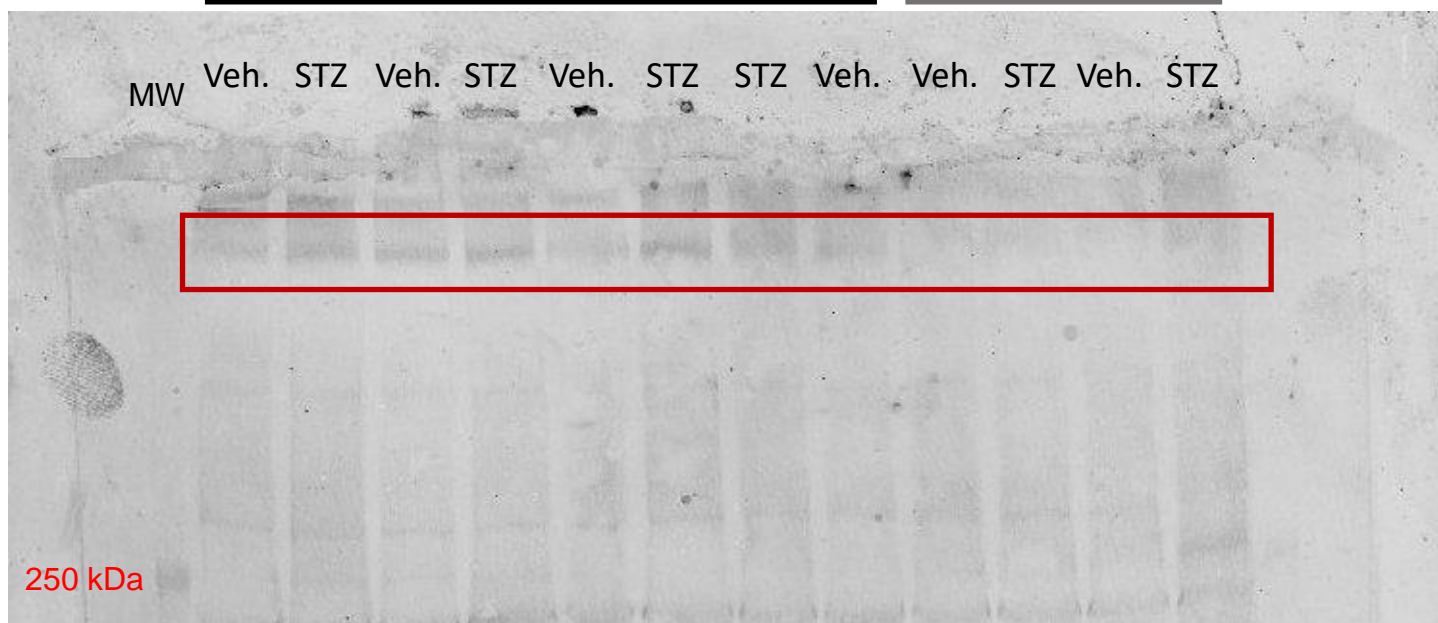


Full unedited gels for Figure IV (Part I)

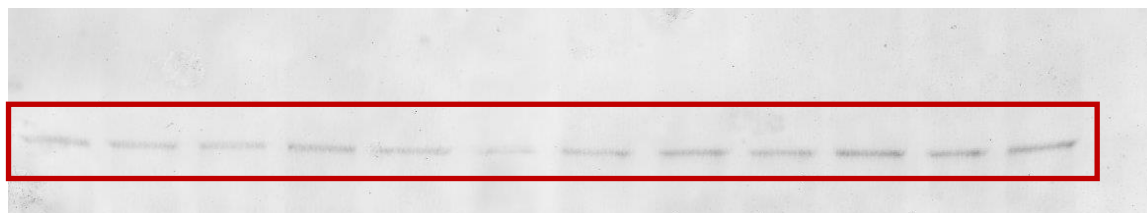
pS2814

CaMKII δ WT

CaMKII δ KO



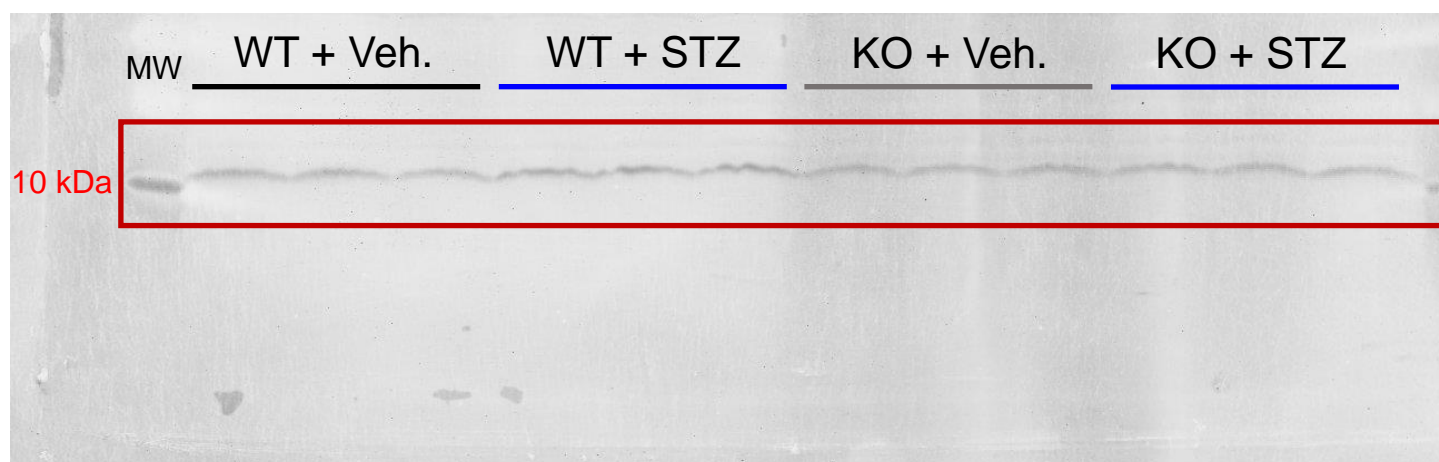
Total RyR



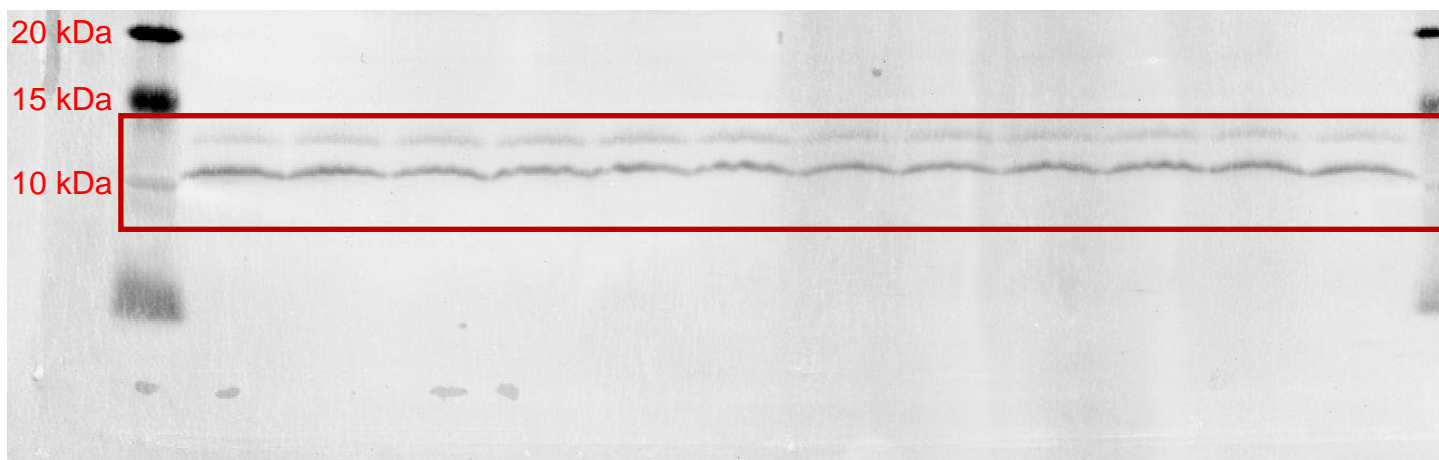
The gel has been cut before reprobing the blot for total RyR2 around the expected molecular weight of RyR2 (MW>500 kDa, confirmed previously by the pS2814 staining) to reduce the antibody use.

Full unedited gels for Figure IV (Part II)

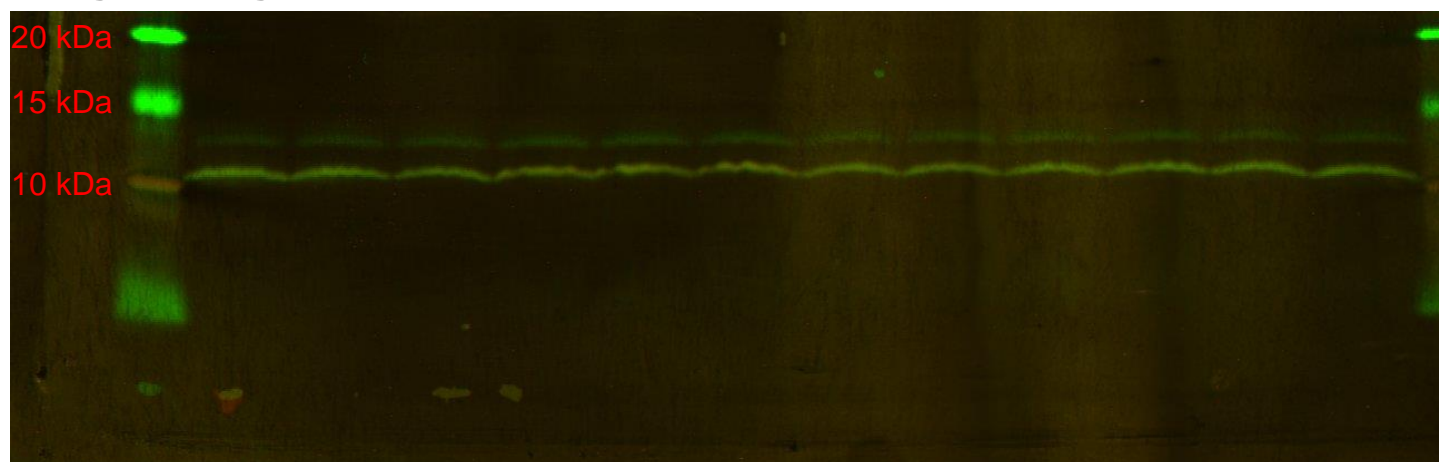
PLB IP O-GlcNAc



Total PLB



Merged image

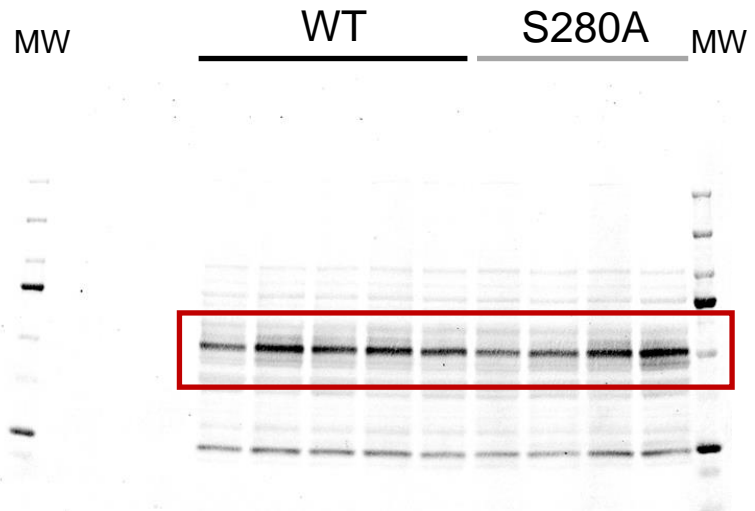
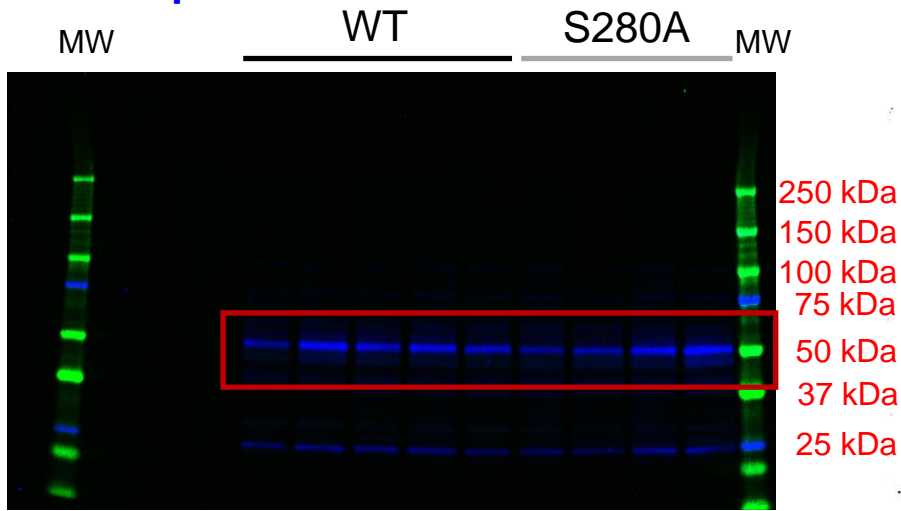


Full unedited gels for Supplemental Figure I (Part I)

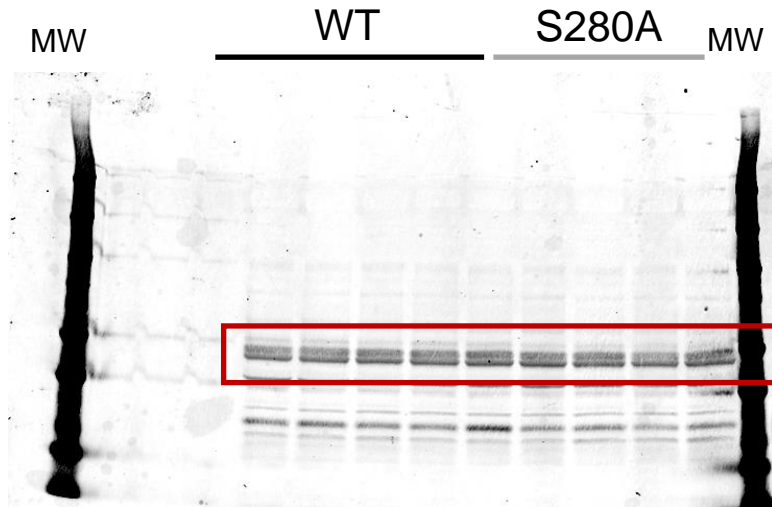
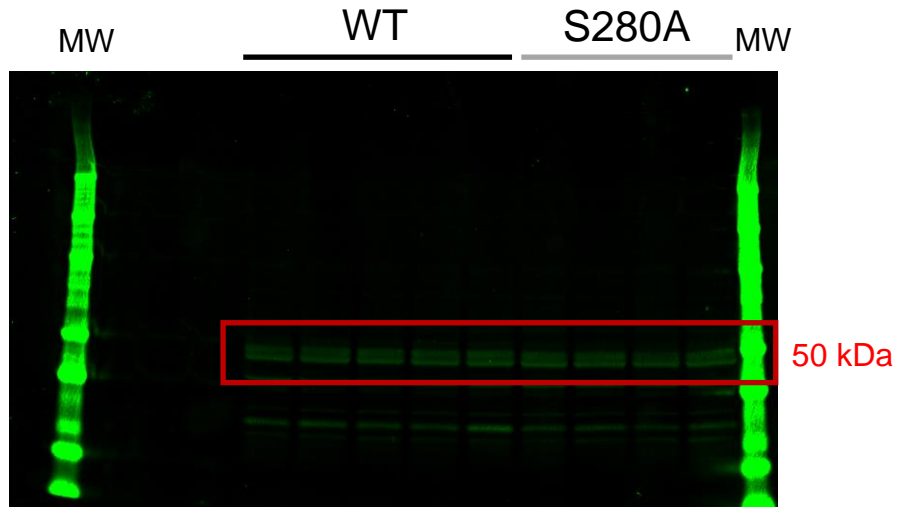
Color

B&W

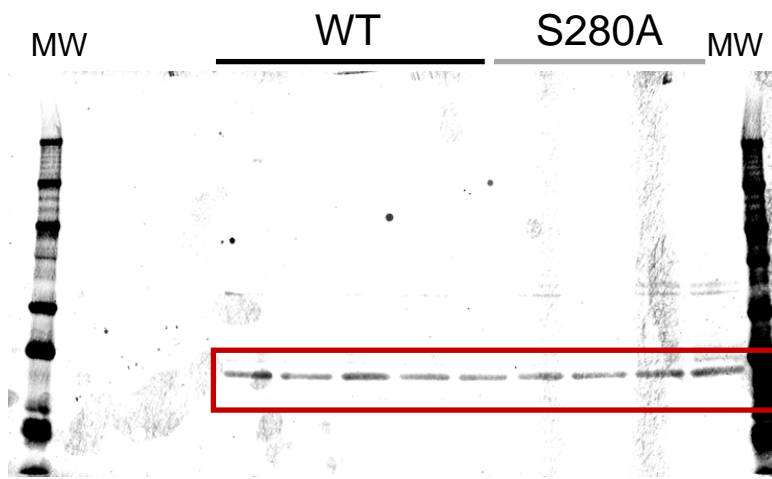
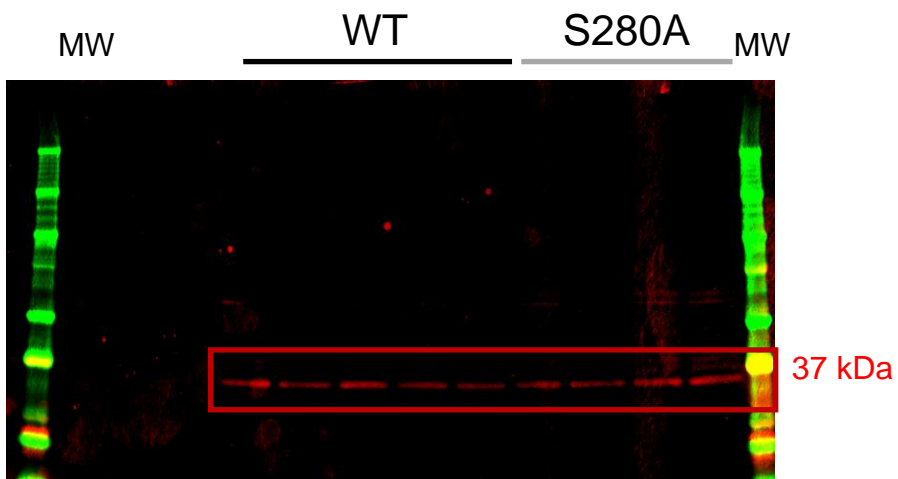
CaMKII pT287



CaMKII δ



GAPDH

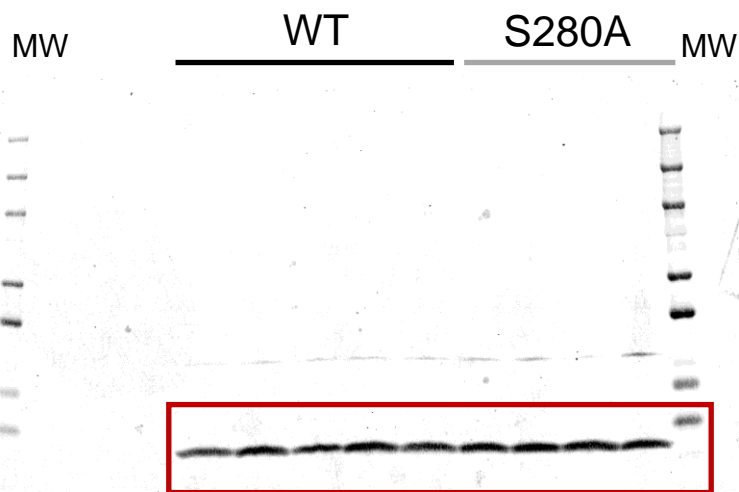
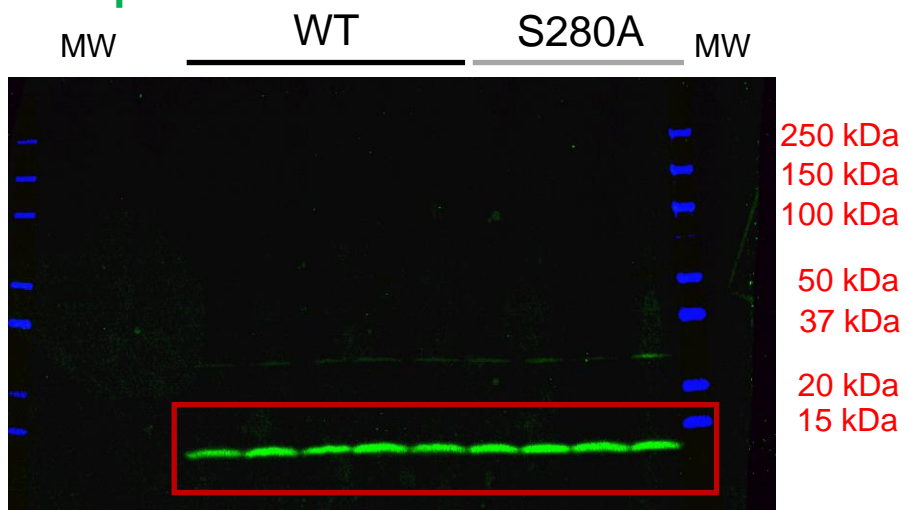


Full unedited gels for Supplemental Figure I (Part II)

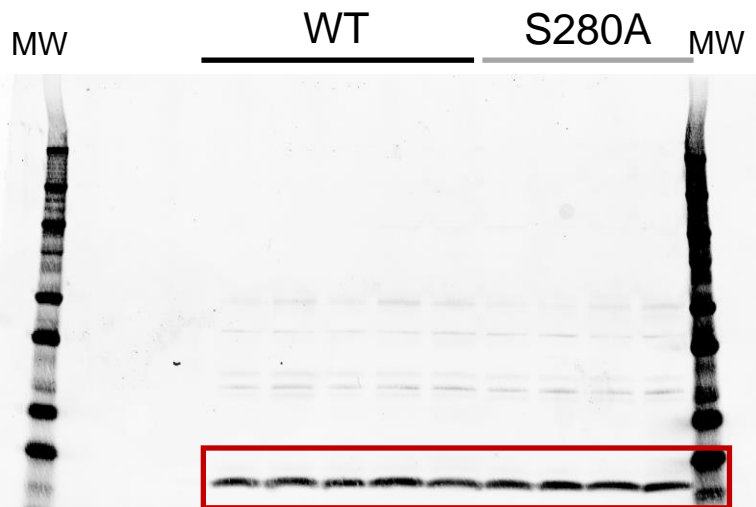
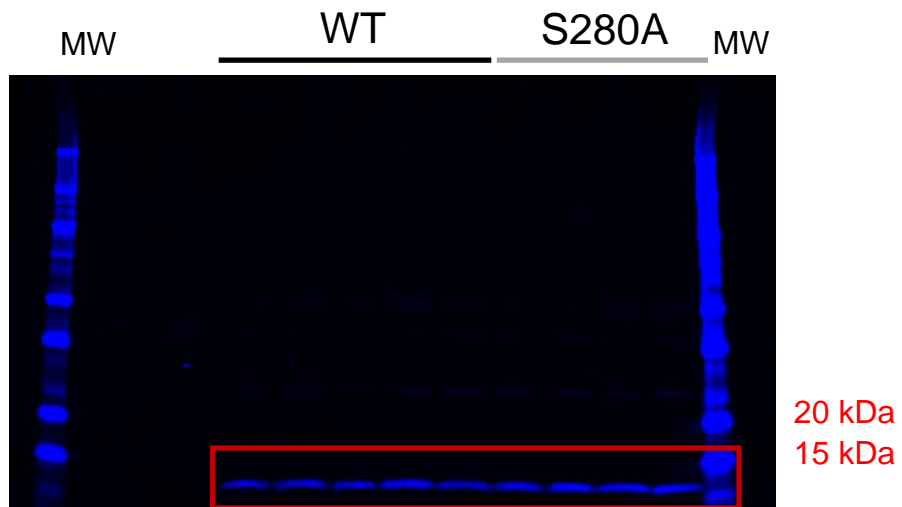
Color

B&W

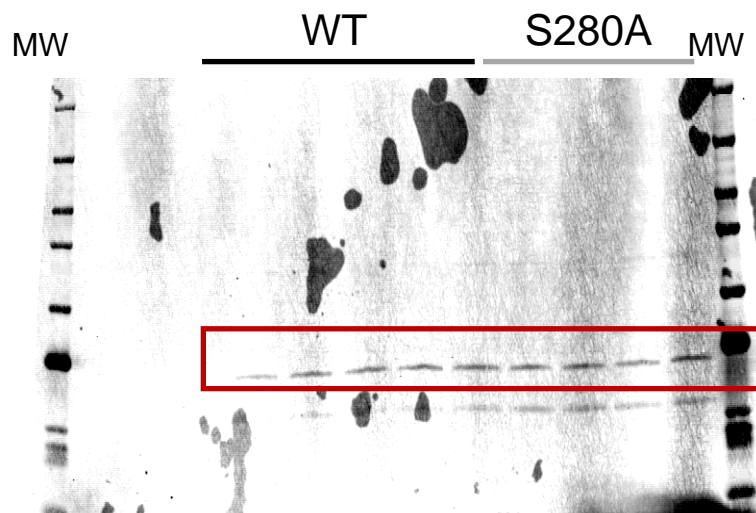
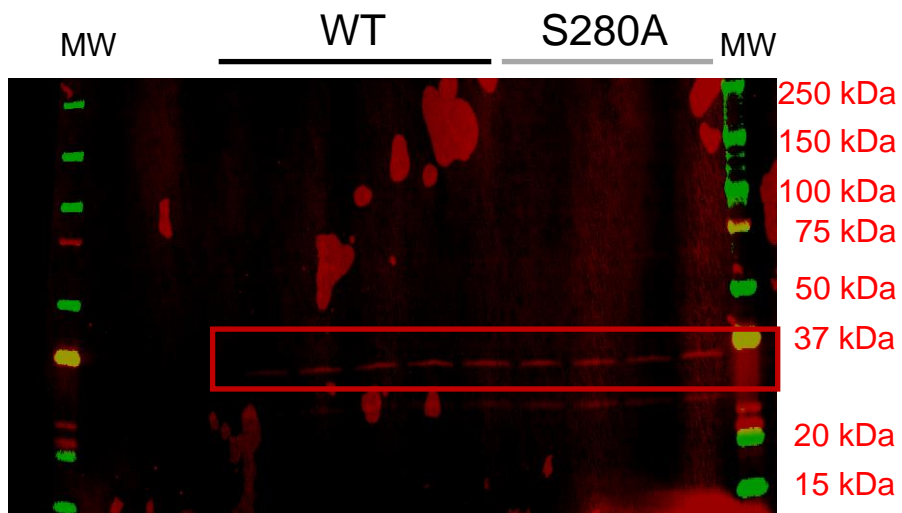
PLB pT17



PLB



GAPDH



Full unedited gels for Supplemental Figure VI (Part I)

Color

B&W

pT17-PLB

MW Vehicle STZ MW

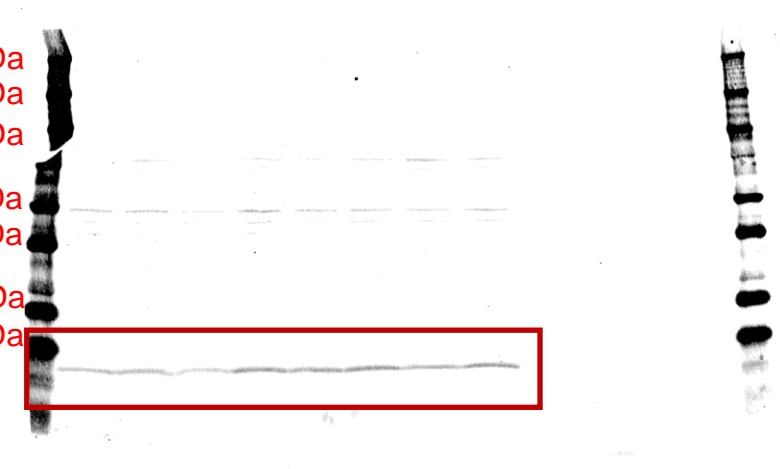
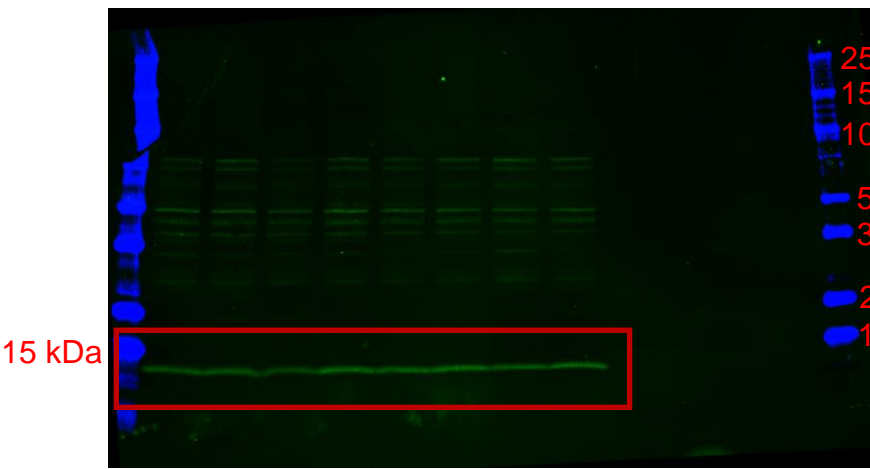
MW Vehicle STZ MW



tot PLB

MW Vehicle STZ MW

MW Vehicle STZ MW



GAPDH

MW Vehicle STZ MW

MW Vehicle STZ MW



Full unedited gels for Supplemental Figure VI (Part II)

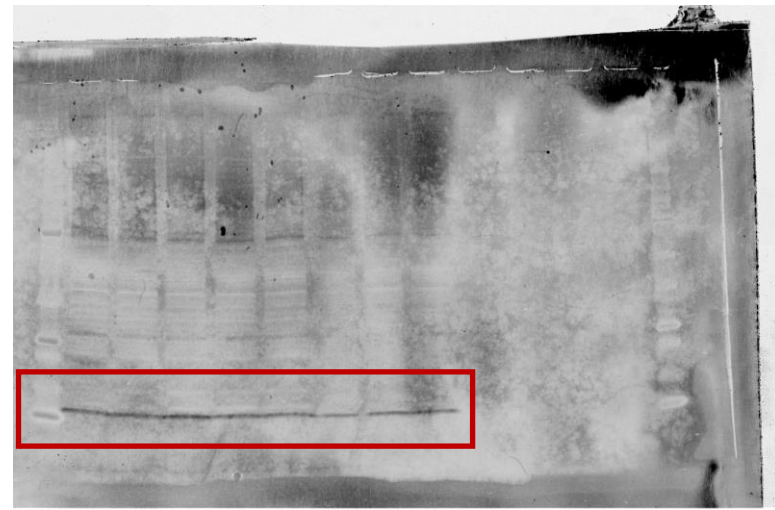
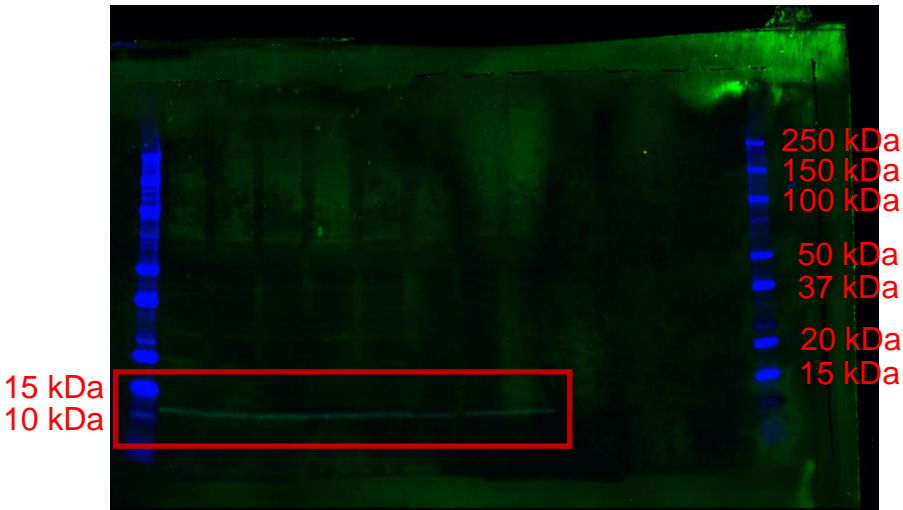
Color

B&W

pS16-PLB

MW Vehicle STZ MW

MW Vehicle STZ MW



tot PLB

MW Vehicle STZ MW

MW Vehicle STZ MW

