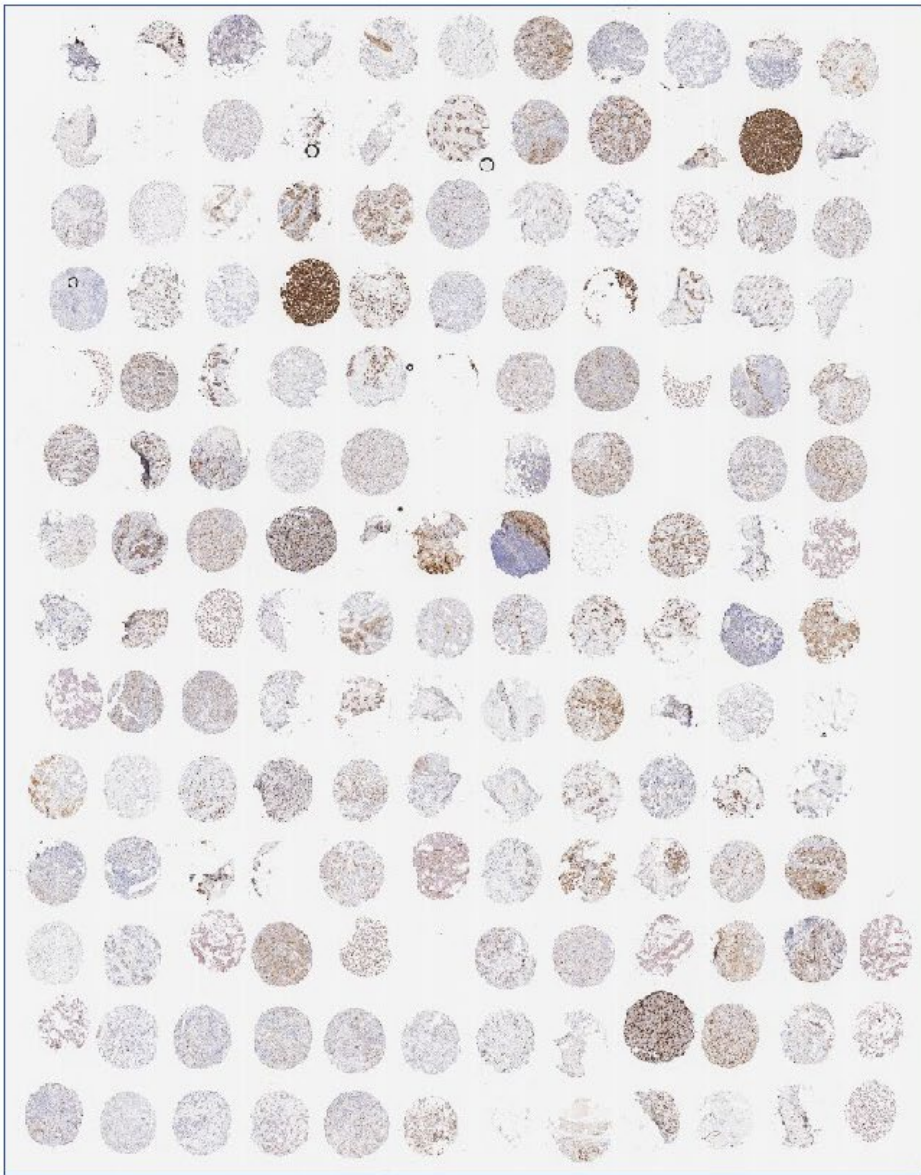
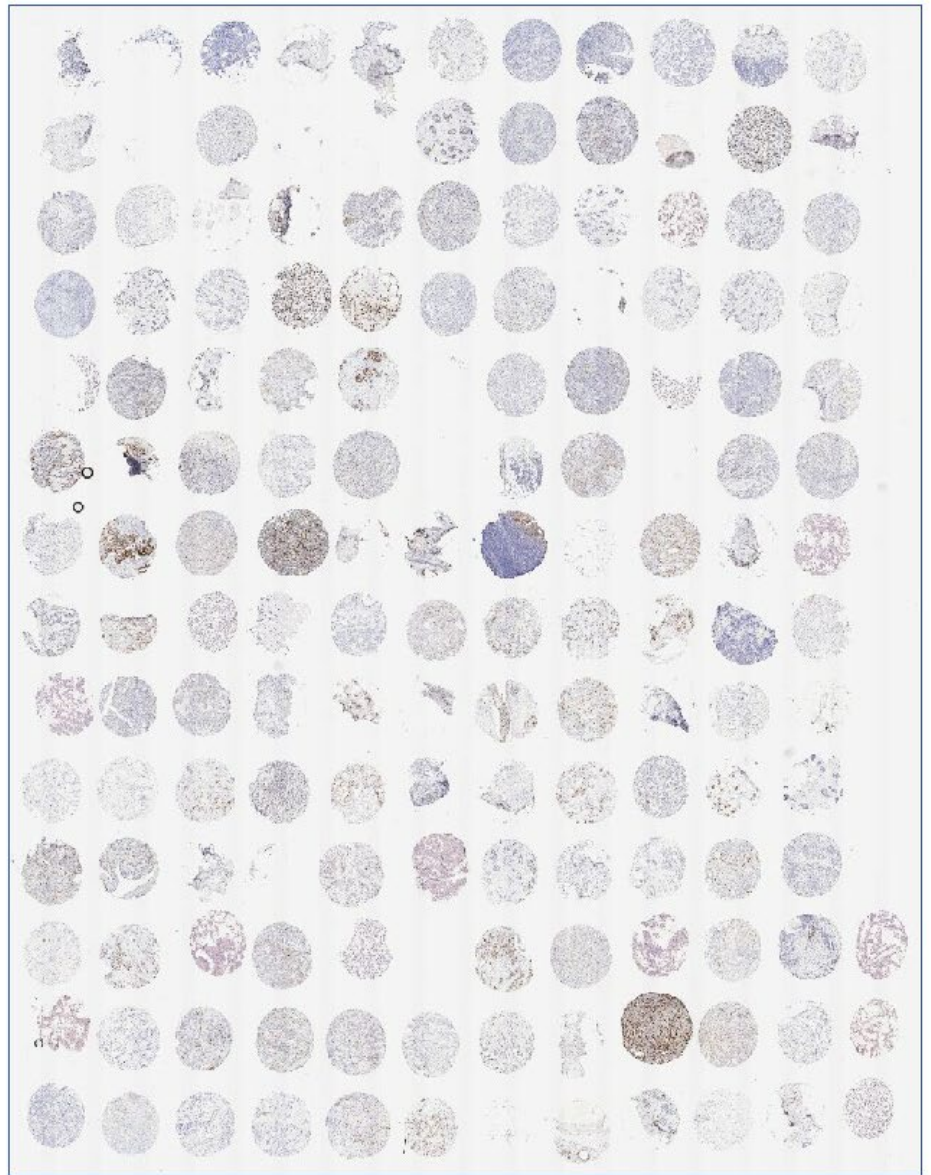


Supplementary Fig. 1. Performance of antibody titration to identify the optimal (signal-to-noise ratio) concentration of each antibody. Tittering is performed for concentrate formats of antibody clones in 2 logs scale.

A



B



Supplementary Fig. 2. Low resolution digital images of staining comparison between MIB-1 and 1297A clones with their optimal concentrations.