

Figure 2b

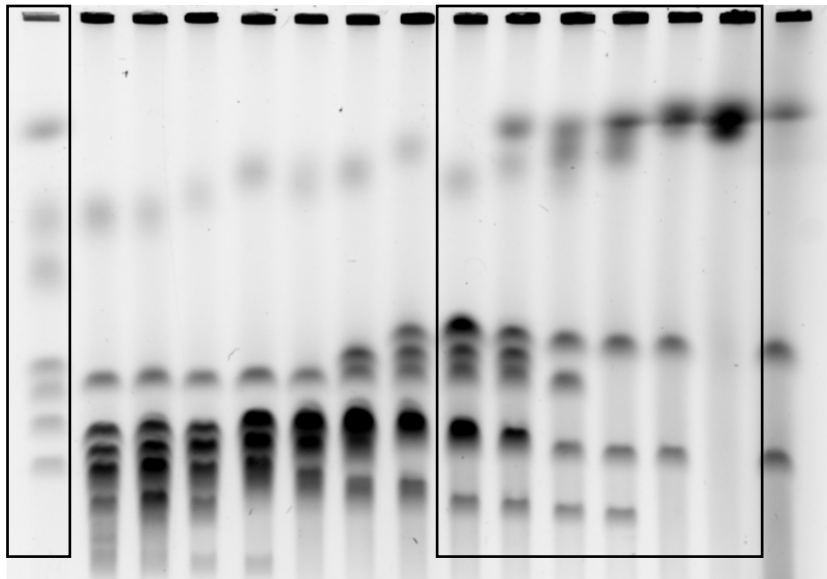
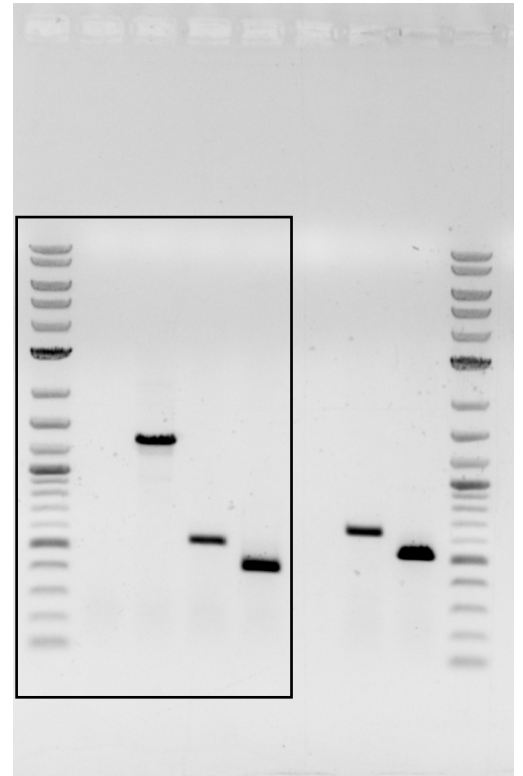


Figure 2c



Extended Figure 1a

S.pombe

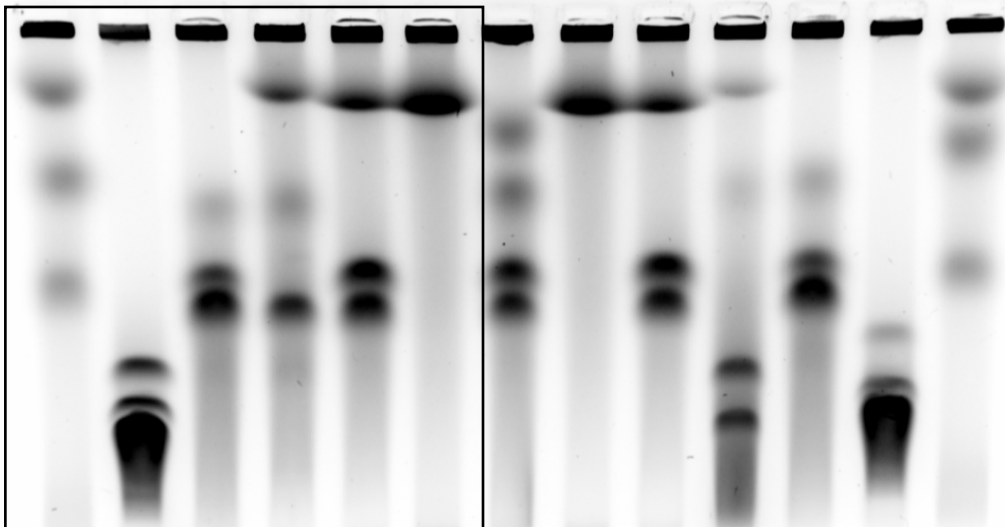
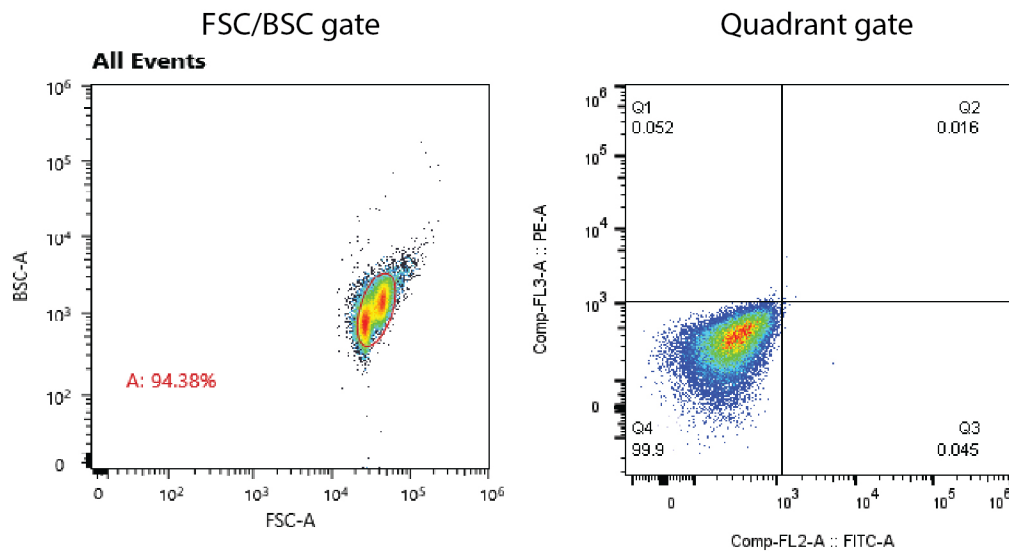
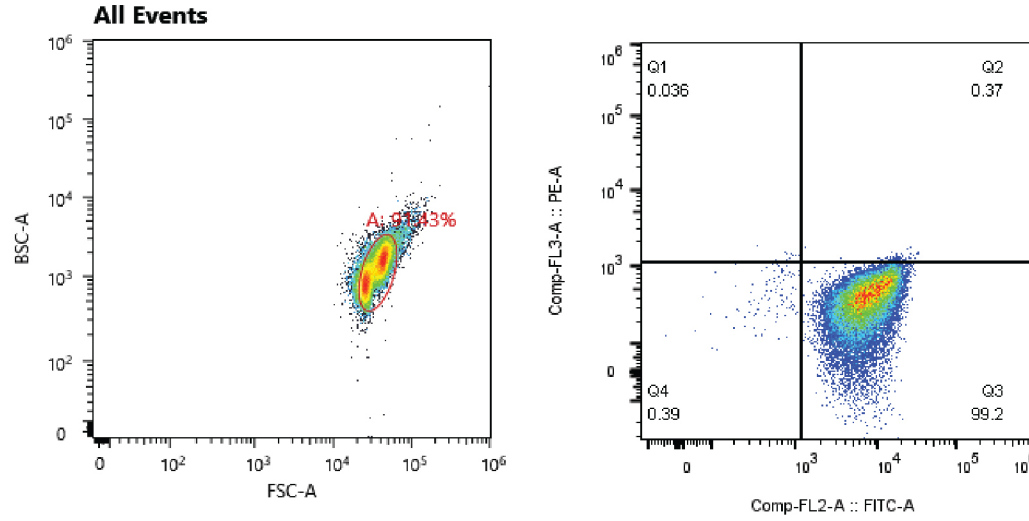


Figure 2d

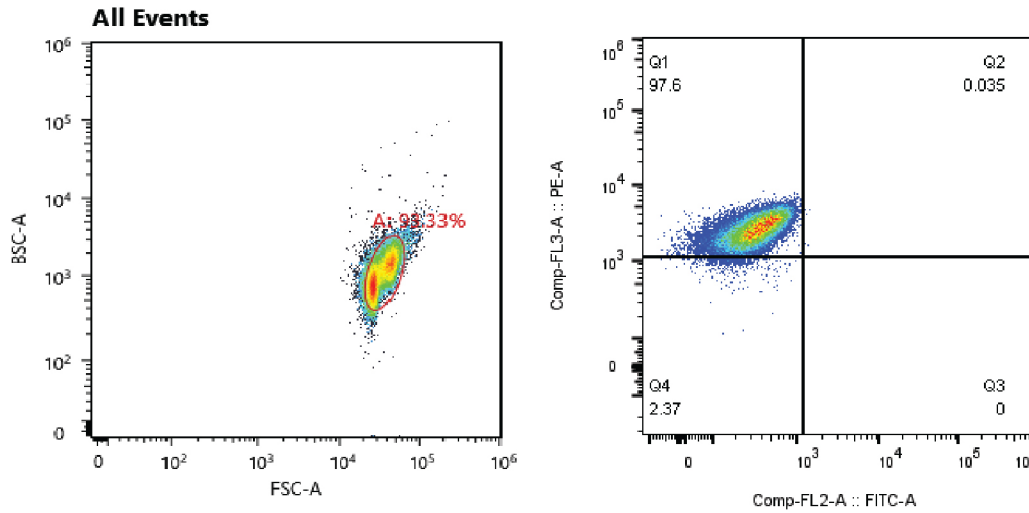
BY4741
(negative control)



BY4741-GFP
(positive control)



BY4741-dTomato
(positive control)



Supplemental figure1 The gating strategy for flow cytometry

We defined FSC/SSC gates to include more than 90% cells of starting cell population. Positive controls (GFP positive and dTomato positive cells) and negative controls were used to generate a compensation matrix. We applied quadrant gates to quantify the percentage of cells in each population. The FSC/SSC gates, compensation matrix and quadrant gates were set to be the same among different experiments groups for comparison.