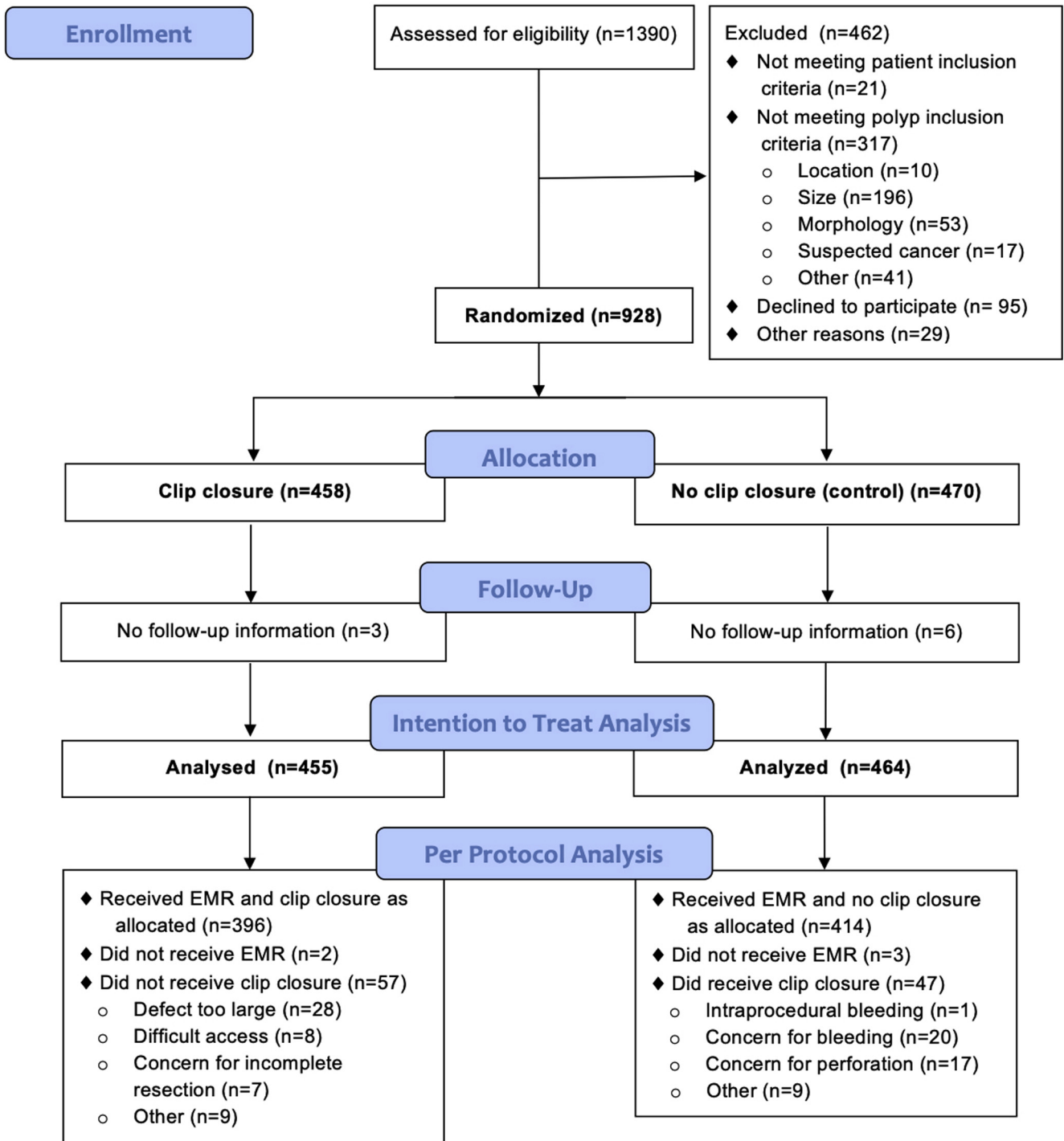


**Supplementary Figure 1.** Large (50 mm) non-pedunculated colon polyp, mucosal defect after resection, and closed defect using clips. Pathology showed a villous adenoma with features of a traditional serrated adenoma.



**Supplementary Figure 2.** Flow diagram. Ascertainment of follow-up information: medical record review:  $n = 3$  (clip group),  $n = 1$  (control group); direct patient contact (phone call or clinic visit):  $n = 452$  (clip group),  $n = 463$  (control group).

**Supplementary Table 1.** Treatment and outcomes of post-procedure bleeding

	Clip group (n = 16)	Control group (n = 33)	P
Time to bleeding event, median days (IQR)	7 (2, 9)	1 (0, 5)	.007
Length of stay, median days (IQR)	2.0 (1, 2)	2 (1, 3)	.662
Colonoscopy performed, n (%)	7 (43.8)	21 (63.6)	.228
Patients requiring blood transfusion, n (%)	3 (18.8)	6 (18.2)	1.0
Mean number of transfusions (SD)	3.0 (1.7)	3.8 (1.9)	.551

SD, standard deviation.

**Supplementary Table 2.** Per-Protocol Analysis of Postprocedure Bleeding Events by Assigned Intervention

Outcomes	Clip group (n = 453)	Control group (n = 463)	Absolute risk difference, % (95% CI) <sup>a</sup>
All patients			
Complete closure	8/305 (2.6) <sup>b</sup>	2/25 (8.0)	4.5 (1.6 to 7.4) <sup>b</sup>
Partial closure	2/91 (2.2) <sup>b</sup>	2/22 (9.1)	
No closure	6/57 (10.5)	29/414 (7.0) <sup>b</sup>	
Proximal			
Complete closure	5/205 (2.4) <sup>b</sup>	1/18 (5.6)	7.0 (3.1 to 10.9) <sup>b</sup>
Partial closure	2/65 (3.1) <sup>b</sup>	2/13 (15.4)	
No closure	3/34 (8.8)	28/291 (9.6) <sup>b</sup>	
Distal			
Complete closure	3/100 (3.0) <sup>b</sup>	1/7 (14.3)	-1.6 (-4.7 to 1.5) <sup>b</sup>
Partial closure	0/26 (0) <sup>b</sup>	0/9 (0)	
No closure	3/23 (13.0)	1/125 (0.8) <sup>b</sup>	

NOTE. In the clip and control groups, values in parentheses are percentages. Definition for patients with multiple polyps (n = 60): Complete = all polyps were closed completely; partial = all polyps were at least partially closed; no closure = at least 1 polyp was not closed. Proximal = Patients with any large polyp in the proximal colon, defined as located at the hepatic flexure, in the ascending colon, or cecum. Distal = Patients with a large polyp only in the descending colon.

<sup>a</sup>Absolute risk difference calculated between patients in the clip group, who underwent complete or partial clip closure compared with patients in the control group who did not undergo clip closure.

<sup>b</sup>Patients who underwent the assigned intervention.