

Pathological correlates of impaired self-awareness of memory
function in Alzheimer's disease.

Supplementary Materials

Gagliardi, G., Kuppe, M., Lois, C., Hanseeuw, B., Vannini, P.,
for the Alzheimer's Disease Neuroimaging Initiative

Alzheimer's Research and Therapy



Boxplot of awareness (participant-informant index) in cognitively normal (left) and impaired (right) individuals.

Figure 1: Participant-Informant Awareness Index distributions across clinical groups

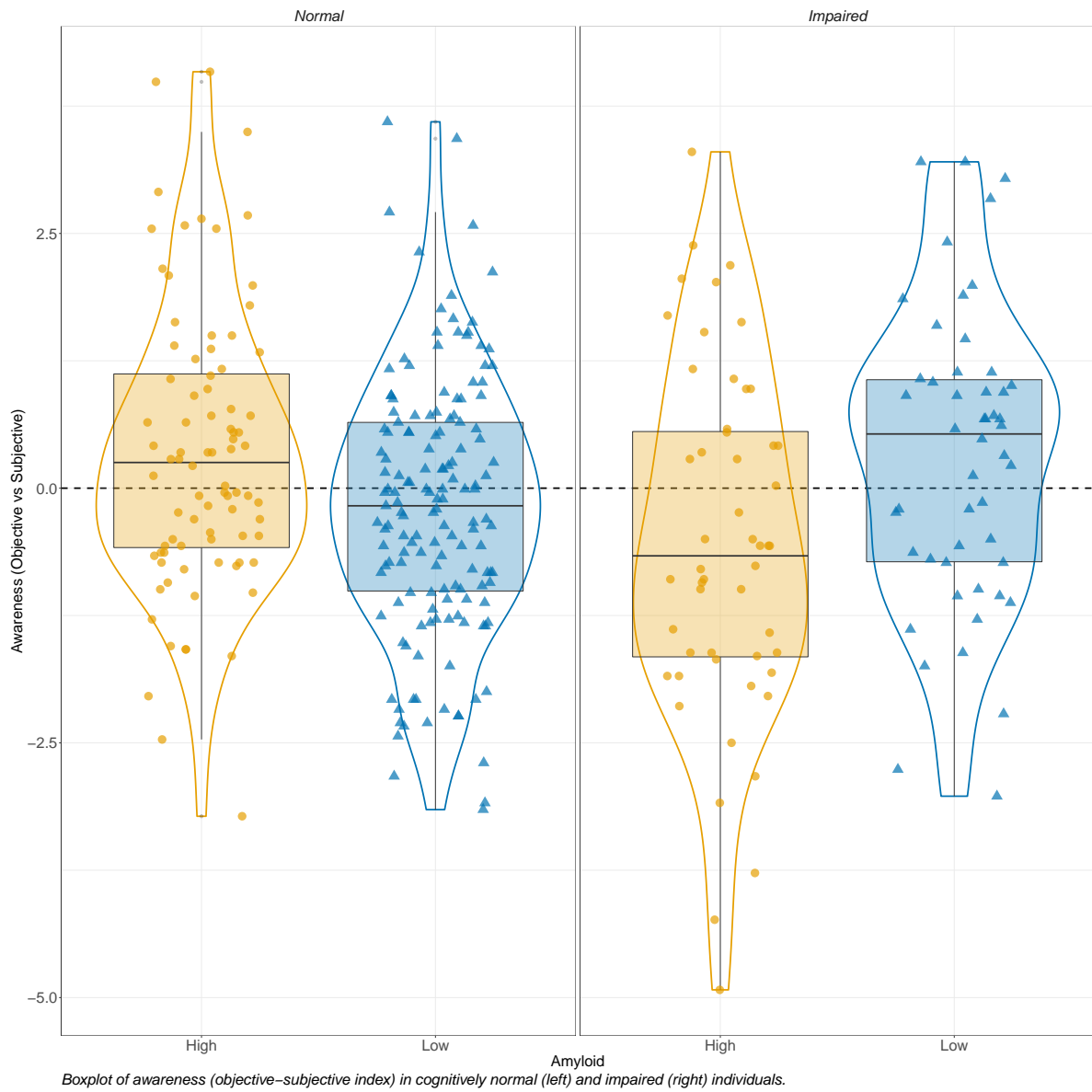
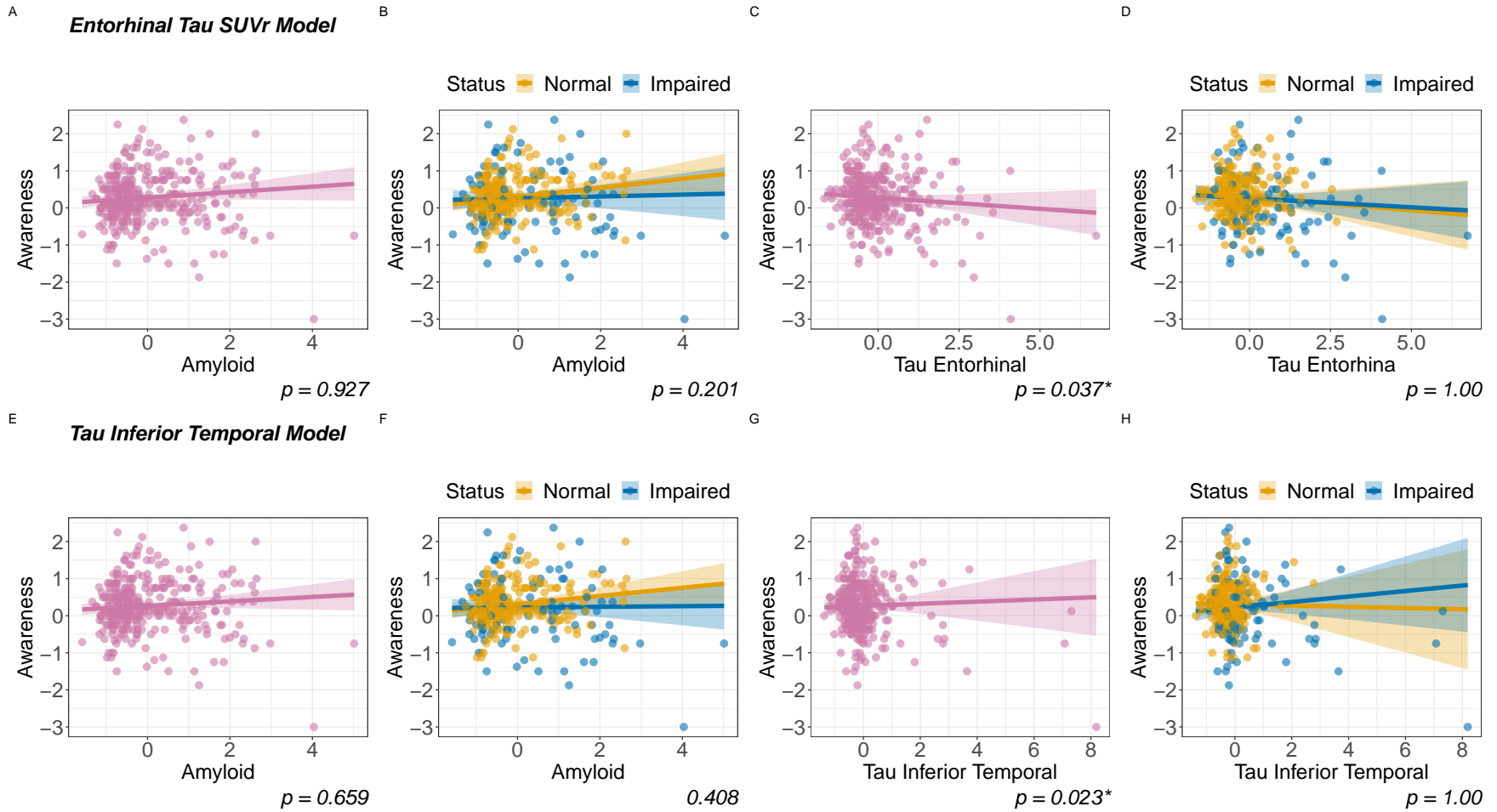
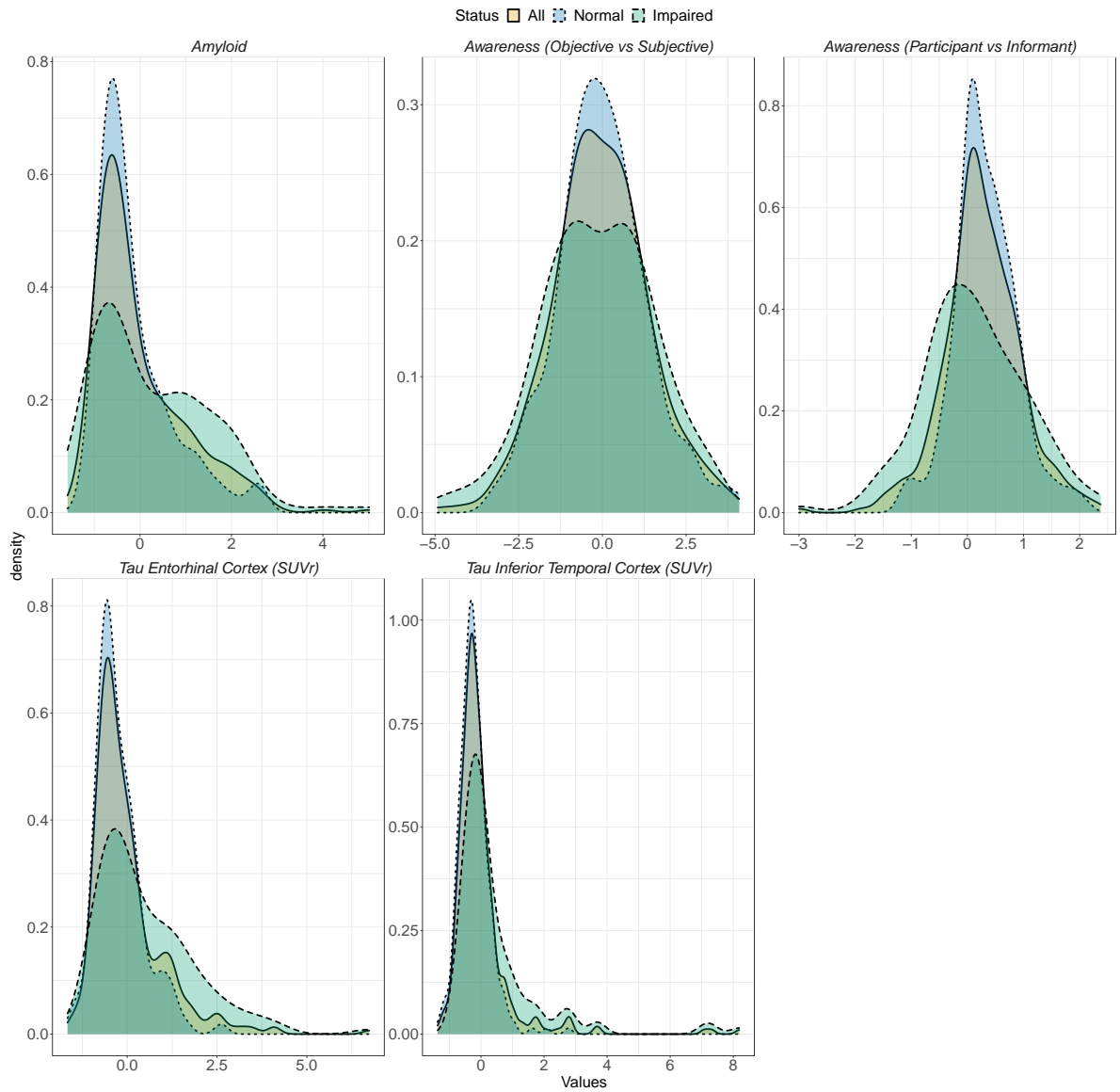


Figure 2: Objective-Subjective Awareness Index distributions across clinical groups



These figures shows the scatterplots, as well as the linear predictions from the models performed using both Entorhinal (upper line) and Inferior Temporal (lower line) SUVR values. The p -values associated to the presented main effects are also given below each figure.

Figure 3: Self-Informant Awareness Index and AD Biomarkers (One- and Two-way effects)



Density plots of awareness (objective–subjective and self–informant indexes) and AD biomarkers (amyloid and tau PET SUVR) in cognitively normal (blue) an

Figure 4: Awareness indexes and AD biomarkers distributions across clinical groups

Table 1: Supplementary Models: Relationship between Awareness, Education and AD Biomarkers

Vars	Participants - Informants								Objective - Subjective							
	SUVr Tau Entorhinal				SUVr Tau Inferior Temporal				SUVr Tau Entorhinal				SUVr Tau Inferior Temporal			
	Estimate	SD	ESs	P	Estimate	SD	ESs	P	Estimate	SD	ESs	P	Estimate	SD	ESs	P
(Intercept)	0.24	0.5			0.18	0.5			0.38	1.05			0.1	1.08		
Age	0	0.01	-0.001	1.000	0	0.01	0.001	1.000	-0.02	0.01	0.011	0.087	-0.02	0.01	0.009	0.111
Gender	-0.14	0.08	0.01	0.134	-0.14	0.08	0.01	0.144	-0.28	0.16	0.009	0.169	-0.29	0.17	0.01	0.153
Education	0.01	0.02	0	1.000	0.02	0.02	0	1.000	0.09	0.04	0	0.058	0.1	0.04	0	0.099
Clinical Status			0.001	0.779			0.004	0.264			0.002	0.677			0.005	1.000
Clinical StatusImpaired	0.29	0.51			0.58	0.51			0.95	1.08			1.41	1.09		
Amyloid	0.01	0.26	0	1.000	0.33	0.27	0.005	0.486	-0.47	0.54	0.002	0.559	-0.12	0.57	0	0.456
Tau	-0.61	0.27	0.016	0.030*	-1.17	0.4	0.026	0.037*	-0.29	0.57	0.001	0.057	-1.51	0.85	0.01	0.391
Education:Clinical Status			0.001	1.000			0.005	0.369			0.001	1.000			0.004	0.471
Education:Clinical StatusImpaired	-0.02	0.03			-0.04	0.03			-0.04	0.06			-0.08	0.06		
Education:Tau	0.03	0.02	0.013	0.083	0.07	0.02	0.027	0.006*	0.01	0.03	0	1.000	0.07	0.05	0.007	0.245
Education:Amyloid	0.01	0.02	0.001	1.000	-0.01	0.02	0.002	0.866	0.05	0.03	0.008	0.227	0.03	0.03	0.003	0.734
Clinical Status:Amyloid			0.005	0.173			0.008	0.166			0.012	0.034*			0.035	0.002*
Clinical StatusImpaired:Amyloid	-0.11	0.09			-0.14	0.08			-0.37	0.19			-0.61	0.18		
Clinical Status:Tau			0.001	1.000			0.004	1.000			0.001	1.000			0.005	0.531
Clinical StatusImpaired:Tau	0.06	0.09			0.14	0.13			0.1	0.19			0.34	0.27		
Amyloid:Tau	0.12	0.07	0	0.120	0.12	0.09	0	0.210	0.17	0.15	0	0.164	0.11	0.2	0	1.000
Clinical Status:Amyloid:Tau			0.024	0.012*			0.012	0.104			0.014	0.065			0.002	0.953
Clinical StatusImpaired:Amyloid:Tau	-0.22	0.08			-0.19	0.1			-0.36	0.17			-0.15	0.21		

Note:

SD = Standard Deviation, ESs = Effect Sizes (Cohen's f^2), Amyloid = florbetapir PET SUVr, Tau = flortaucipir PET SUVr

Table 2: Supplementary Models: Relationship between Awareness and AD Biomarkers for the whole sample

Vars	Participants - Informants								Objective - Subjective							
	SUVr Tau Entorhinal				SUVr Tau Inferior Temporal				SUVr Tau Entorhinal				SUVr Tau Inferior Temporal			
	Estimate	SD	ESs	P	Estimate	SD	ESs	P	Estimate	SD	ESs	P	Estimate	SD	ESs	P
(Intercept)	0.3	0.46			0.55	0.46			0.78	0.96			0.98	0.98		
Age	0	0.01	0	1.000	0	0.01	0.001	1.000	-0.02	0.01	0.009	0.157	-0.02	0.01	0.01	0.128
Gender	-0.15	0.08	0.012	0.091	-0.14	0.08	0.011	0.113	-0.25	0.16	0.007	0.241	-0.24	0.16	0.007	0.288
Education	0	0.01	0	1.000	0	0.01	0	1.000	0.06	0.03	0.01	0.136	0.05	0.03	0.007	0.249
Amyloid	0.07	0.04	0.008	1.000	0.06	0.04	0.006	0.665	0.18	0.09	0.013	0.668	0.12	0.09	0.006	0.555
Tau	-0.09	0.04	0.013	0.001*	0.01	0.06	0	<0.001*	-0.12	0.09	0.005	0.013*	-0.02	0.13	0	0.019*
Amyloid: Tau	-0.09	0.03	0.032	0.003*	-0.1	0.02	0.048	<0.001*	-0.2	0.06	0.035	0.002*	-0.12	0.05	0.016	0.046*

Note:

SD = Standard Deviation, ESs = Effect Sizes (Cohen's f^2), Amyloid = florbetapir PET SUVr, Tau = flortaucipir PET SUVr