

Figure S1

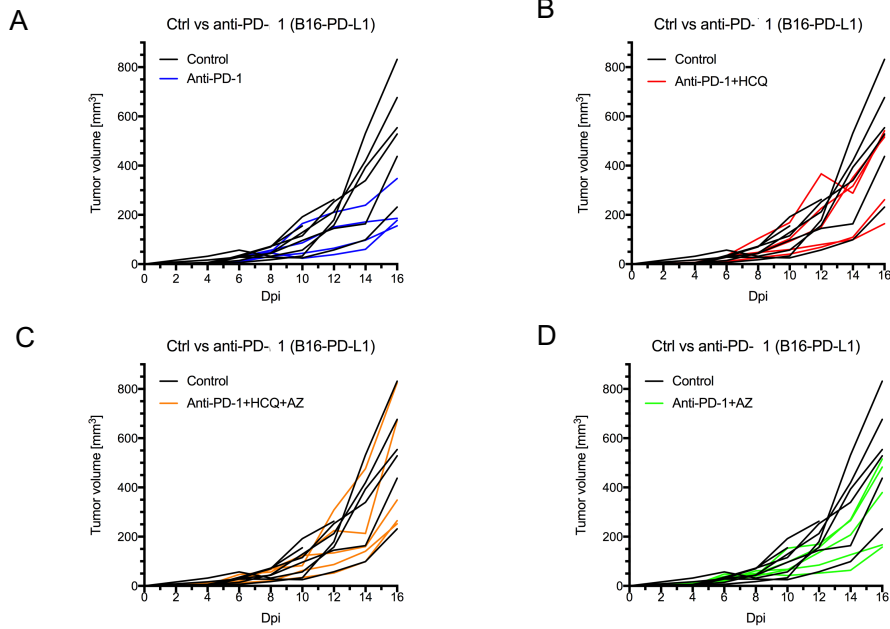


Figure S1: Spider graphs representing the effects of HCQ and AZ on immune checkpoint blockade in cancer therapy. C57BL/6 mice were implanted with B16 tumoral cells as described above in Figure 1.
Panel A: Tumor growths in control vs anti-PD-1 vs anti-PD-1 + HCQ vs anti-PD-1 + AZ vs anti-PD-1 + HCQ + AZ.
Panel B: Spider graph representing control vs anti-PD-1.
Panel C: Spider graph representing control vs anti-PD-1 + HCQ.
Panel D: Spider graph representing control vs anti-PD-1 + HCQ + AZ.
Panel E: Spider graph representing control vs anti-PD-1 + AZ.