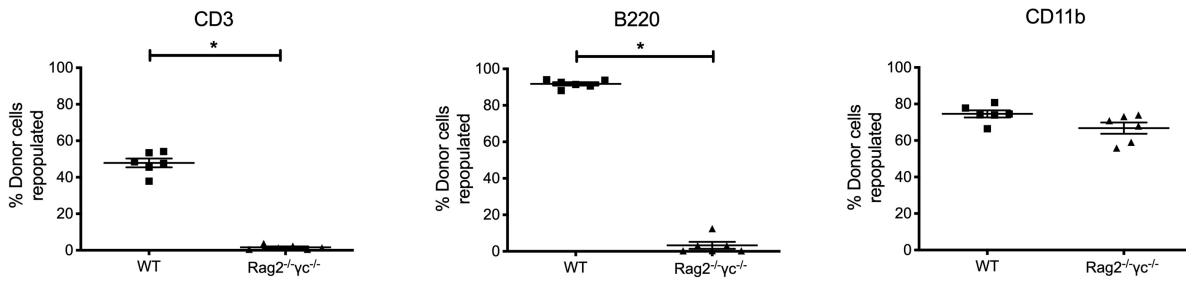
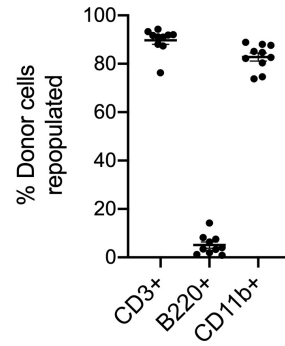


**Supplementary Figure S1.** Engraftment of WT, IFN $\gamma^{-/-}$ , TNF $\alpha^{-/-}$  and PRF1 $^{-/-}$  BM cells in PBMCs. Donor-derived repopulation in CD3 $^{+}$  T-cells, B220 $^{+}$  B-cells and CD11b $^{+}$  myeloid cells was determined by flow cytometry 10 weeks after BM transplantation. Data are presented as mean  $\pm$  SE. Each dot represents one recipient mouse (n=10 per cohort). \* $P$ <0.05 by one-way ANOVA.



**Supplementary Figure S2.** Engraftment of WT and Rag2<sup>-/-</sup>; γC<sup>-/-</sup> BM cells in PBMCs. Donor-derived repopulation in CD3<sup>+</sup> T-cells, B220<sup>+</sup> B-cells and CD11b<sup>+</sup> myeloid cells was determined by flow cytometry 4 weeks after BM transplantation. Data are presented as mean ± SE. Each dot represents one recipient mouse (n=6 per cohort). \*P<0.05 by two-tailed t-test.



**Supplementary Figure S3.** Engraftment of IgM<sup>-/-</sup> BM cells in PBMCs. Donor-derived repopulation in CD3<sup>+</sup> T-cells, B220<sup>+</sup> B-cells and CD11b<sup>+</sup> myeloid cells was determined by flow cytometry 10 weeks after BM transplantation. Data are presented as mean  $\pm$  SE. Each dot represents one recipient mouse (n=10).