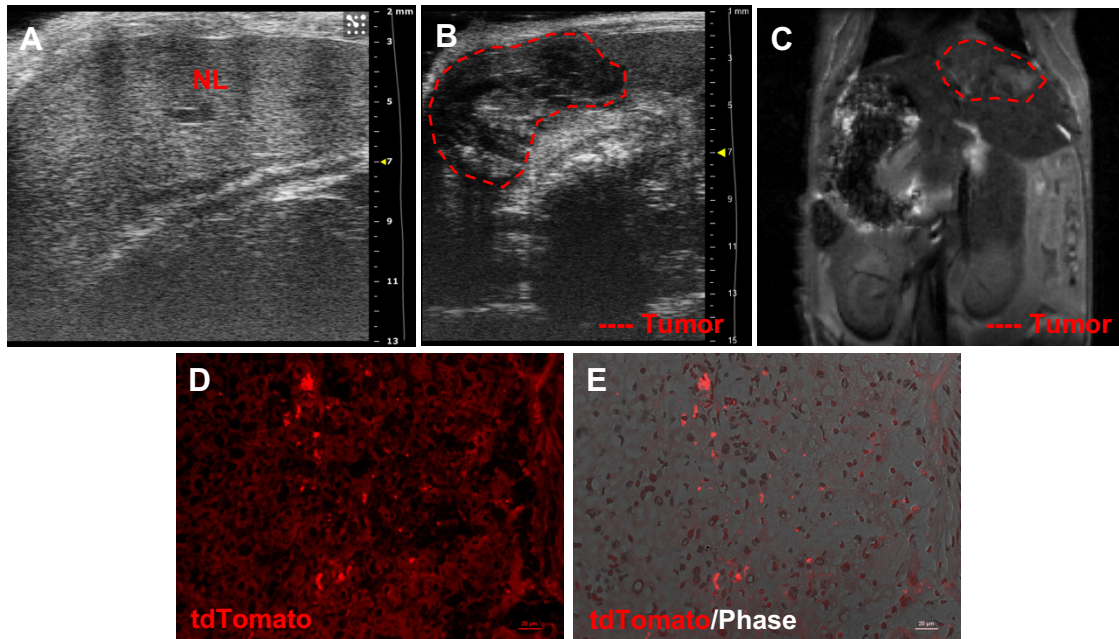


iScience, Volume 24

Supplemental information

**Renal neoplasms in tuberous sclerosis mice
are neurocristopathies**

Uchenna Unachukwu, Takayuki Shiomi, Monica Goldklang, Kiran Chada, and Jeanine D'Armiento



Supplemental Figure S1: Visualizing Neural Crest Lineage Cells in $Tsc2^{+/-}$ Mouse Hepatic Tumors (Related to Figures 1 and 3) - Ultrasound images of normal liver tissue of $Tsc2^{+/+}Mpz(Cre)/TdT^{fl/fl}$ mice (**A**) compared to demarcated tumorigenic hepatic region (red dashes) in $Tsc2^{+/-}Mpz(Cre)/TdT^{fl/fl}$ mice (**B**). **C**) The occurrence of hepatic lesions in $Tsc2^{+/-}Mpz(Cre)/TdT^{fl/fl}$ mice was confirmed using small animal MRI. **D**) Fluorescent image of representative immunohistochemical slices (4 μ M) obtained from hepatic lesions of $Tsc2^{+/-}Mpz(Cre)/TdT^{fl/fl}$ mice viewed using excitation filter 540/45nm showing punctate tdTomato⁺ NCCs. **E**) Merged tdTomato and phase images of the hepatic lesions. N=2 slides; 3 sections/slide was used to visualize consistency of hepatic lesions in $Tsc2^{+/-}Mpz(Cre)/TdT^{fl/fl}$ mice. Scale bar = 20 μ m.