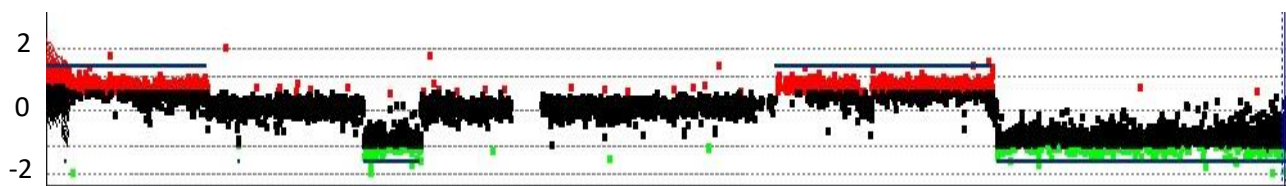
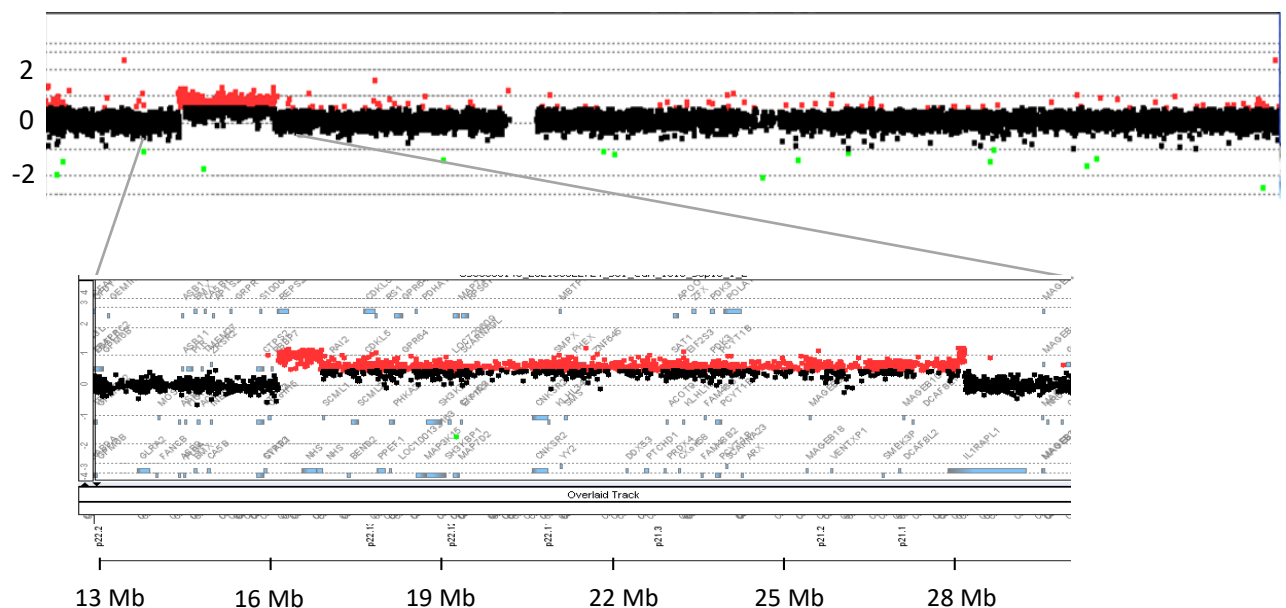




Patient 1



Patient 2



Patient 3



Patient 4

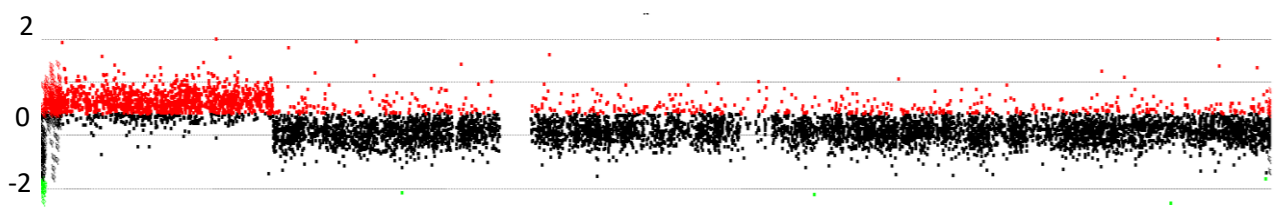


Figure S1. Array-based comparative genomic hybridization of X chromosome of the patients. The black dots show normal copy numbers. The red dots denote increased (log ratio higher than +0.4) copy numbers. The green dots show decreased (log ratio lower than -0.8) copy numbers. Patient 2's Xp was partially enlarged in order to show the copy number could be partially four.