

Genetically determined Short-Chain Fatty Acid level modifies the association of dietary fiber intake in changes in BMD during weight loss: The POUNDS lost trial

Tao Zhou^{1,2}, Dianjianyi Sun^{2,3}, Xiang Li², Yoriko Heianza², Meryl S. LeBoff⁴,
George A. Bray⁵, Frank M. Sacks⁶, Lu Qi^{2,6}

¹School of Public Health (Shenzhen), Sun Yat-sen University, Guangzhou,
Guangdong 510006, China

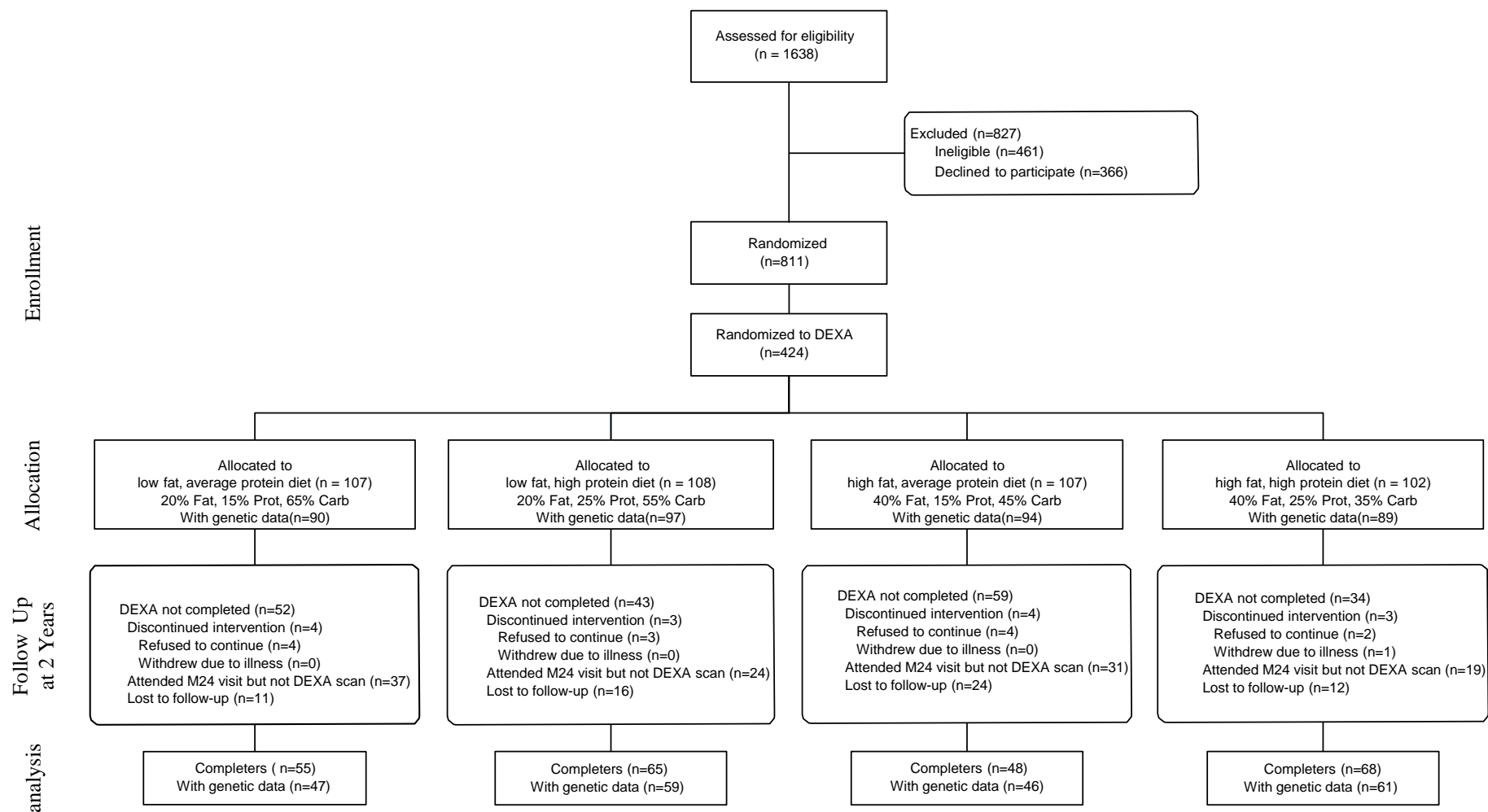
²Department of Epidemiology, School of Public Health and Tropical Medicine,
Tulane University, New Orleans, LA

³Department of Epidemiology and Biostatistics, School of Public Health, Peking
University Health Science Center, Beijing, China

⁴Department of Medicine, Brigham and Women's Hospital, Boston, MA.

⁵Pennington Biomedical Research Center, Louisiana State University, Baton Rouge,
LA

⁶Department of Nutrition, Harvard TH Chan School of Public Health, Boston, MA



Supplementary Figure 1. Participant Flowchart*

*This flowchart was cited from Sacks, Frank M et al. NEJM, 2009; de Souza et al. AJCN. 2012.