

Suppl. Fig. 3

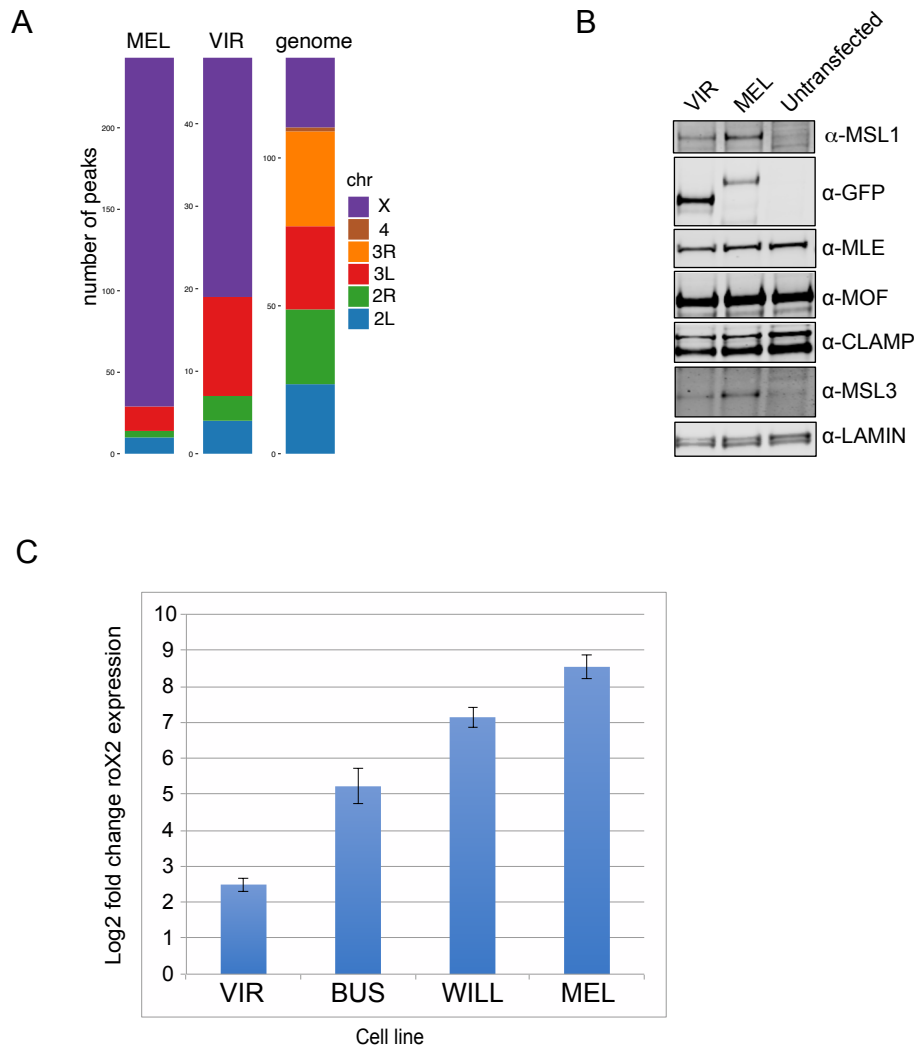


Figure S3. MSL2^{vir} expressed in female cells is a functional protein.

- (A) Chromosomal distribution of MSL3-ChIP peaks obtained by two independent experiments using female *D. melanogaster* cells transfected with the MSL2^{mel} (MEL) or MSL2^{vir} (VIR). The chromosomal size distribution (genome) is provided for reference. Only peaks common to all replicates are considered.
- (B) Western-blot analyses of whole cells extracts from *D. melanogaster* female cells expressing the indicated MSL2-GFP constructs. MSL2^{vir} (VIR), MSL2^{mel} (MEL).
- (C) RoX2 expression analysis of *D. melanogaster* female cells transfected with the indicated MSL2 constructs, MSL2^{vir} (VIR), MSL2^{bus} (BUS), MSL2^{will} (WILL), MSL2^{mel} (MEL). Levels of roX2 were analyzed by RT-qPCR, normalized to levels of 7SK and expressed as Log2 fold change over the control (untransfected cells). Data are mean \pm SEM of three biological replicates.