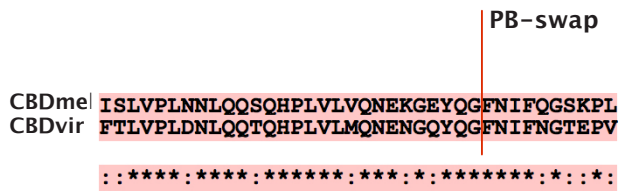
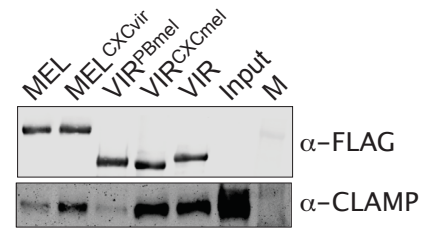


## Suppl. Fig. 4

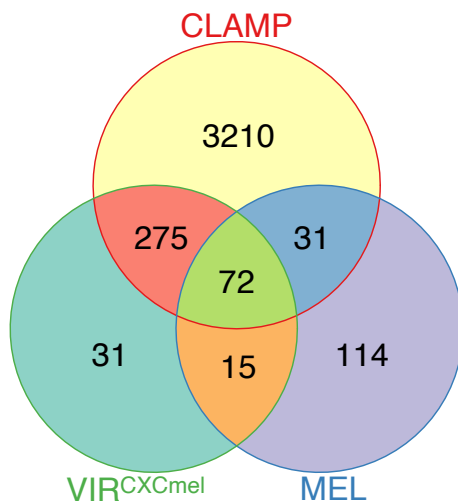
A



B



C



**Figure S4. MSL2<sup>vir</sup> interacts with CLAMP via its C-terminus.**

- (A) Protein sequence alignment of MSL2<sup>mel</sup> and MSL2<sup>vir</sup> CLAMP binding domains (CBD) as in figure S1A. The beginning of the MSL2<sup>vir</sup><sup>PBmel</sup> swap-construct (PB-swap) is indicated.
- (A) Western-blots analyses of pull-down experiments using the indicated MSL2-FLAG recombinant constructs, MSL2<sup>mel</sup> (MEL), MSL2<sup>mel</sup><sup>CXCvir</sup> (MEL<sup>CXCvir</sup>), MSL2<sup>vir</sup><sup>PBmel</sup> (VIR<sup>PBmel</sup>), MSL2<sup>vir</sup><sup>CXCmel</sup> (VIR<sup>CXCmel</sup>), MSL2<sup>vir</sup> (VIR) as bait in presence of extracts from *D. virilis* male cells. 5% of the extracts is loaded as reference (Input), “M” indicates the protein marker.
- (B) Venn diagram showing overlapping peaks of MSL2<sup>vir</sup><sup>CXCmel</sup> (VIR<sup>CXCmel</sup>) (GFP ChIP N=1), MSL2<sup>mel</sup> (MEL) (GFP ChIP N=1) and CLAMP (from (Sorucu et al. 2013), CLAMP ChIP from kc cells intersect from N=2) ChIP peaks.