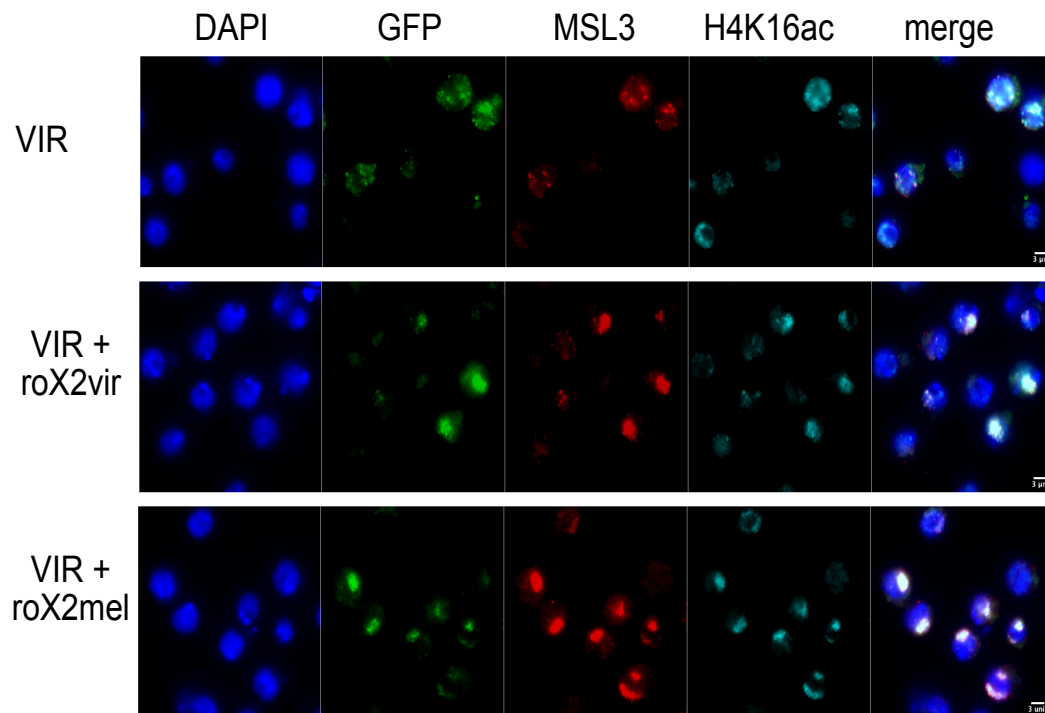


## Suppl. 5



**Figure S5. MSL2<sup>vir</sup> binds to X-territories in presence of roX2.**

Representative Immunofluorescence pictures of *D.melanogaster* female cells transfected with MSL2<sup>vir</sup>-GFP construct (VIR) *-/+ roX2 virilis* (roX2vir) or *roX2 melanogaster* (roX2mel) genes. Cells were stained using antibodies against GFP, MSL3, H4K16ac and DAPI to visualize DNA. Scale bar: 3μM.