

ChemMedChem

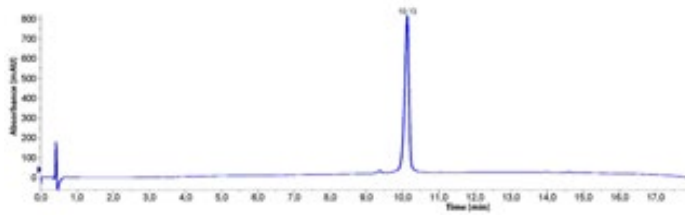
Supporting Information

Exploring Viral Interference Using Peptides: Molecular Determinants of HIV-1 Inhibition by a Peptide Derived from Human Pegivirus-1 Envelope Protein E2

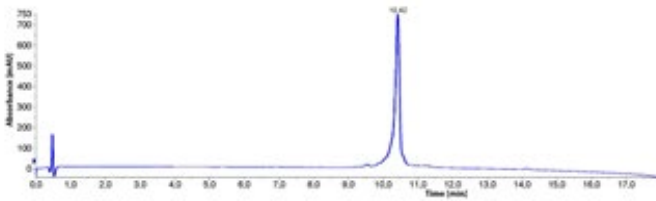
Rebecca Hoffmann, Tamara Ruegamer, Johanna Schaubächer, Anette Rohrhofer, Peter Kirmeß, Karen M. Fiebig, Barbara Schmidt, and Jutta Eichler*

1. HPLC chromatograms of synthesized peptides.

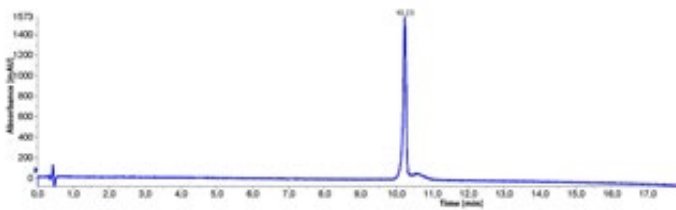
P6-2



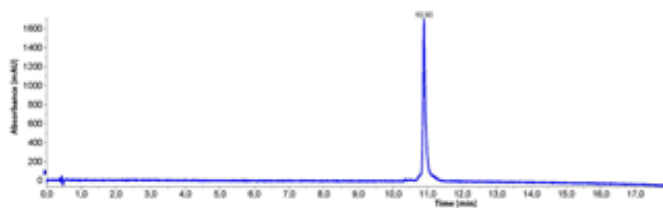
P6-2(Bio)



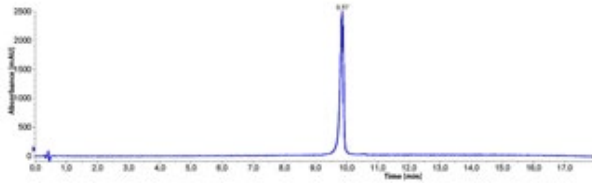
P6-2-1



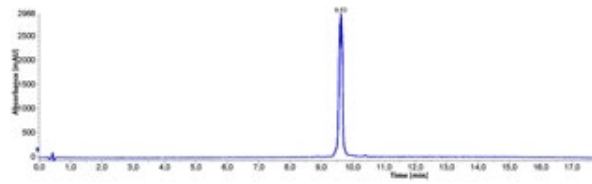
P6-2-3



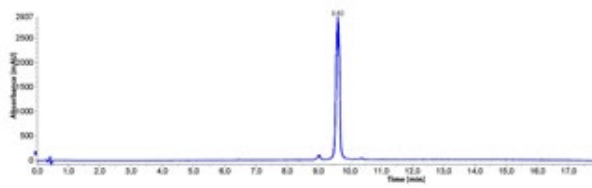
P6-2-4



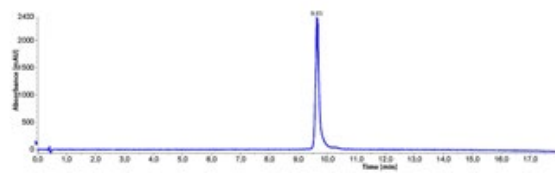
P6-2-5



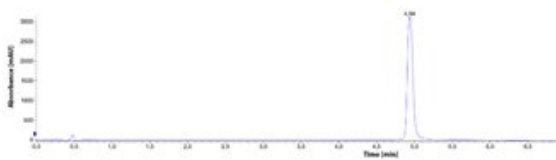
P6-2-6



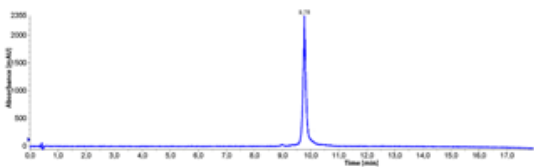
P6-2-7



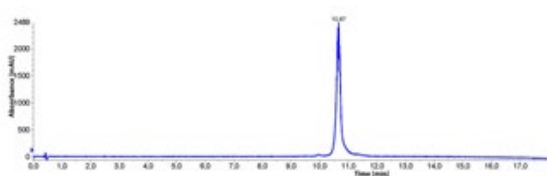
P6-2-7(Bio)



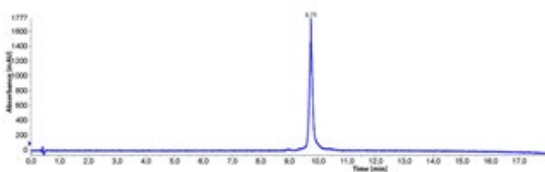
P6-2-8



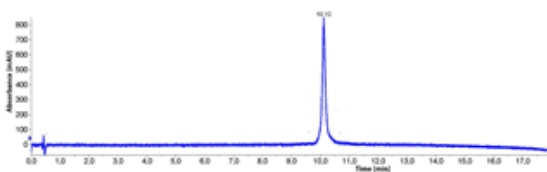
P6-2-9



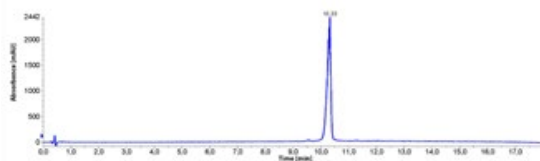
P6-2-10



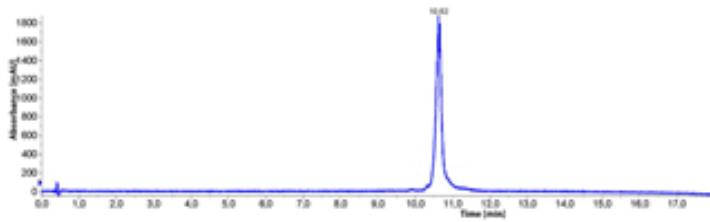
P6-2-11



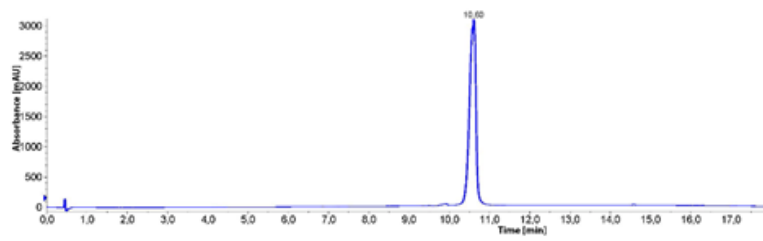
P6-2-12



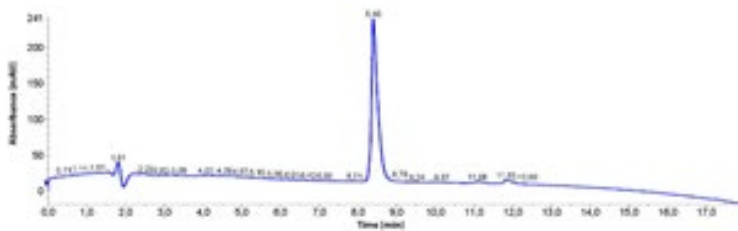
P6-2-13



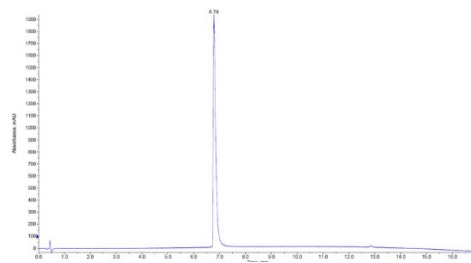
P2-14



V3(Bio)



V3(Fluo)



2. ESI-MS data of synthesized peptides

Peptide	Molar mass	[M+2H] ²⁺
P6-2	2202	1102.9
P6-2(Bio)	2501	1251.8
P6-2-1	2189	1094.3
P6-2-2	2189	1094.2
P6-2-3	2189	n.d.
P6-2-4	2469	1235.9
P6-2-5	2469	1235.7
P6-2-6	2469	1235.6
P6-2-7	2156	1079.4
P6-2-7(Bio)	2452	1227.8
P6-2-8	2089	1045.5
P6-2-9	2177	1098.0
P6-2-10	2089	1045.4
P6-2-11	2177	1089.1
P6-2-12	2204	1102.3
P6-2-13	2262	1131.9
P6-2-14	2859	1430.5
		[M+4H] ⁴⁺
V3(Bio)	4629	1158.0
V3(Fluo)	4824	1206.9