

## Supplementary Information

### The RNA sensor MDA5 detects SARS-CoV-2 infection

Natalia G. Sampaio, Lise Chauveau, Jonny Hertzog, Anne Bridgeman, Gerissa Fowler, Jurgen P. Moonen, Maeva Dupont, Rebecca A. Russell, Marko Noerenberg, Jan Rehwinkel

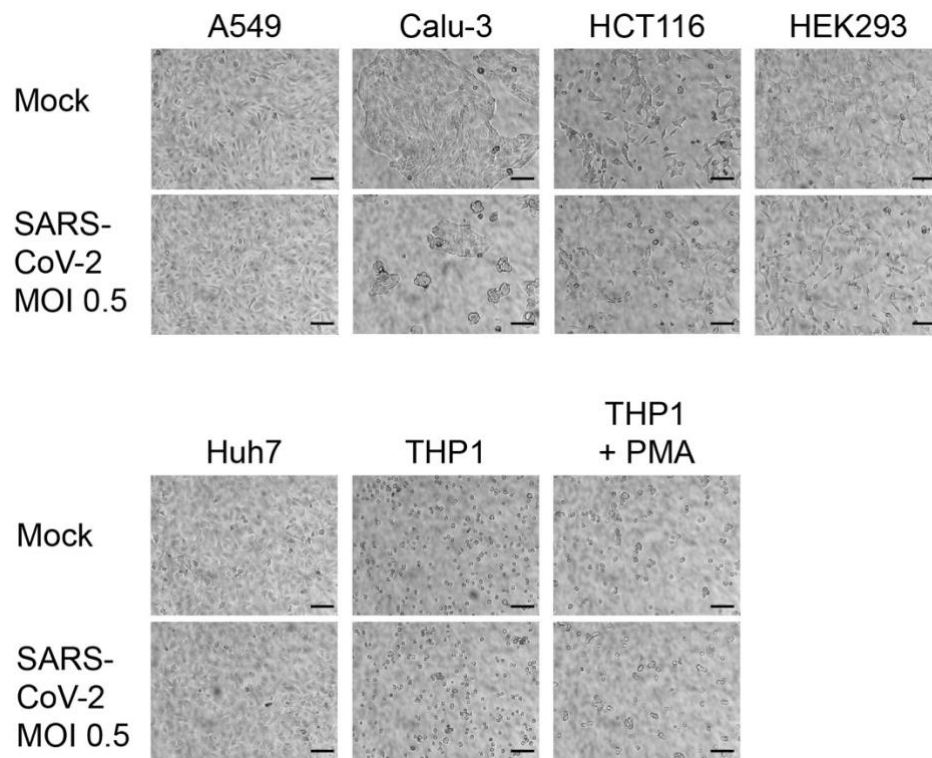
#### **Content:**

Supplementary Figure 1

Supplementary Figure 2

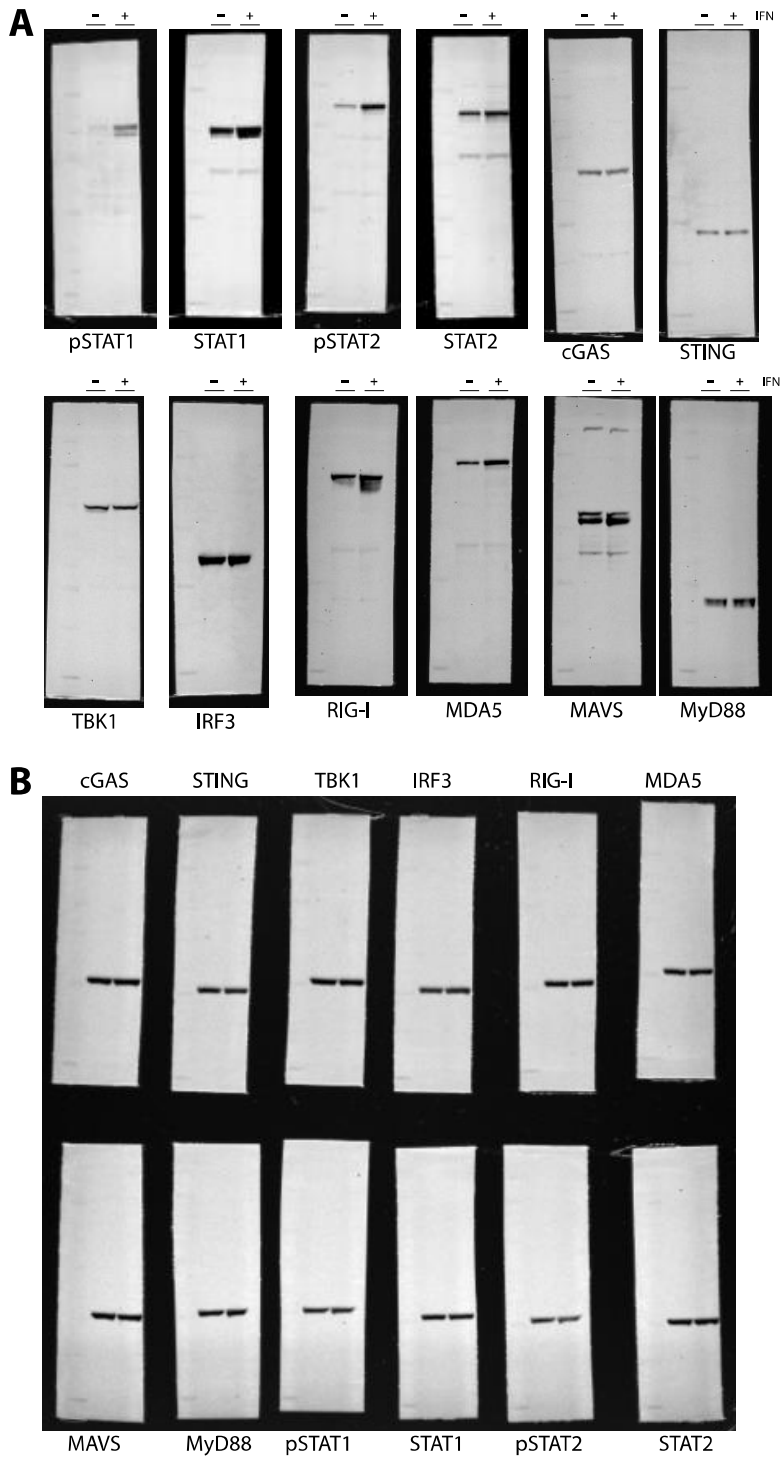
Supplementary Figure 3

Supplementary Figure 4



**Supplementary Figure 1. Microscopy images of SARS-CoV-2 infected cells.**

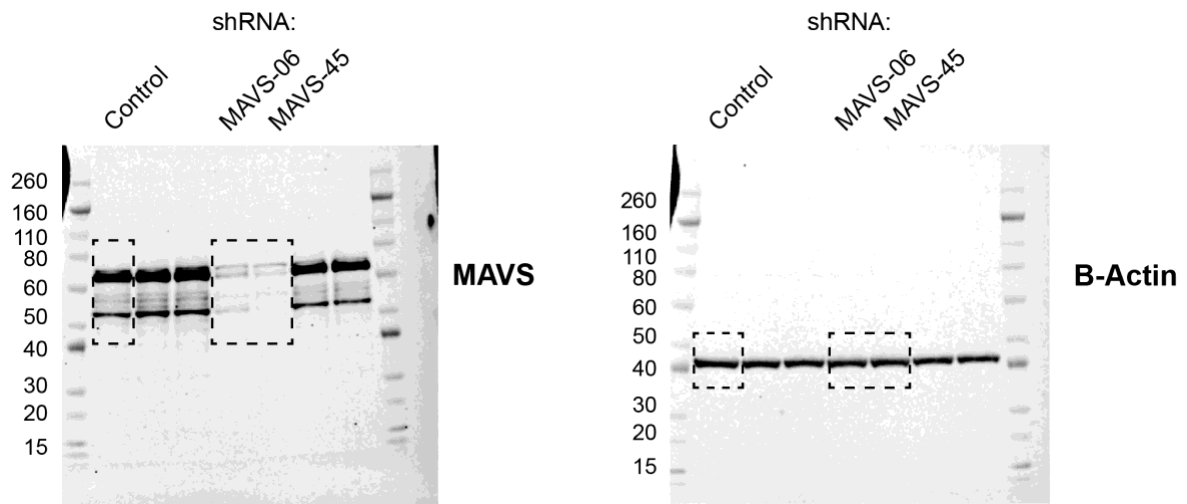
The indicated cell lines were mock-infected or infected with SARS-CoV-2 (MOI = 0.5) for 24 hours prior to analysis by brightfield microscopy. Scale bars represent 100  $\mu\text{m}$ . Data are from a single experiment.



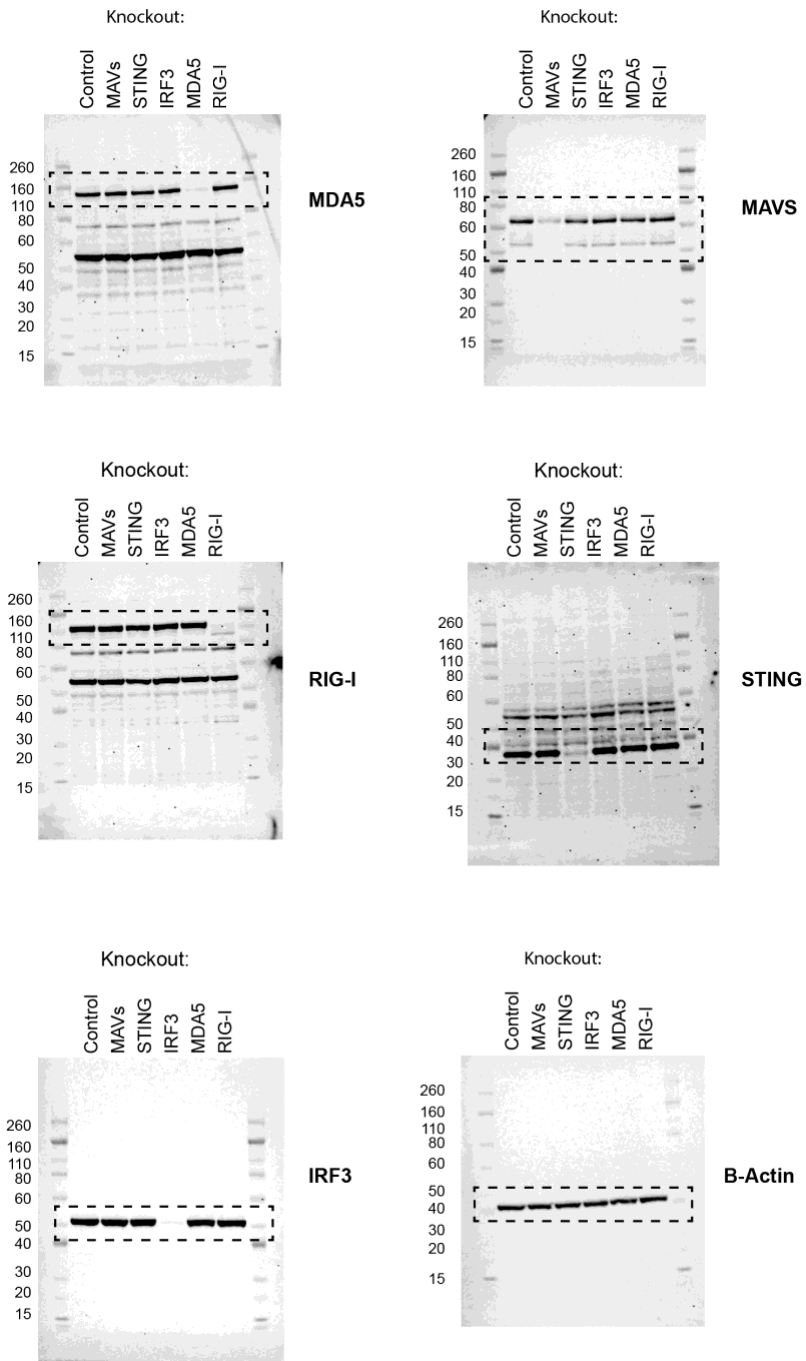
**Supplementary Figure 2. Full western blots; corresponding to Figure 1B.**

(A) Overlay of membranes and chemiluminescence signal for antibodies indicated below individual panels. The first lane on each membrane contains the size marker.

(B) Overlay of membranes and chemiluminescence signal for  $\beta$ -actin obtained after re-probing corresponding membranes from (A).



**Supplementary Figure 3. Full western blots; corresponding to Figure 2A.**



**Supplementary Figure 4. Full western blots; corresponding to Figure 3A.**