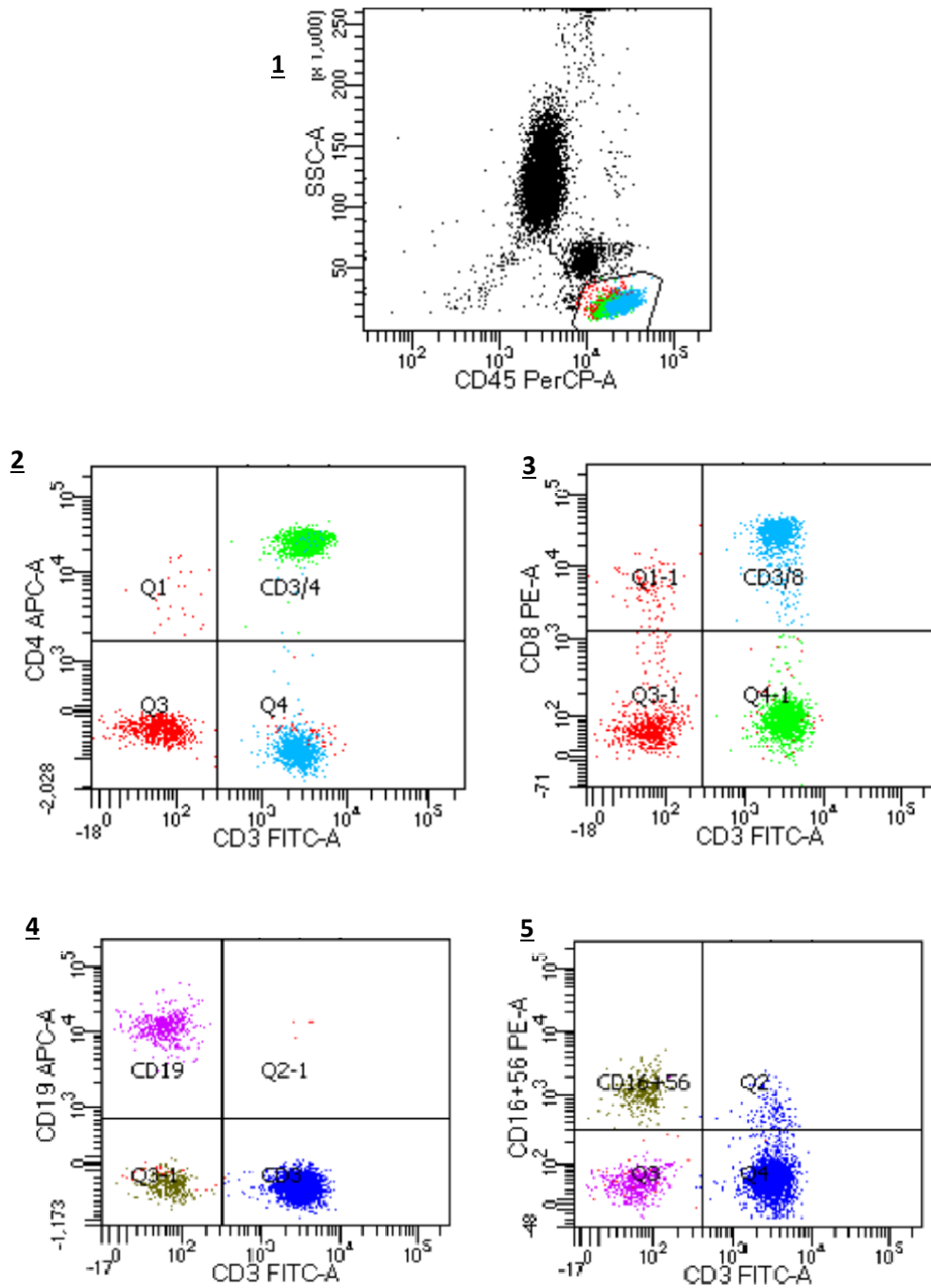


# 1. Flow Cytometry Analysis: Gating Strategy

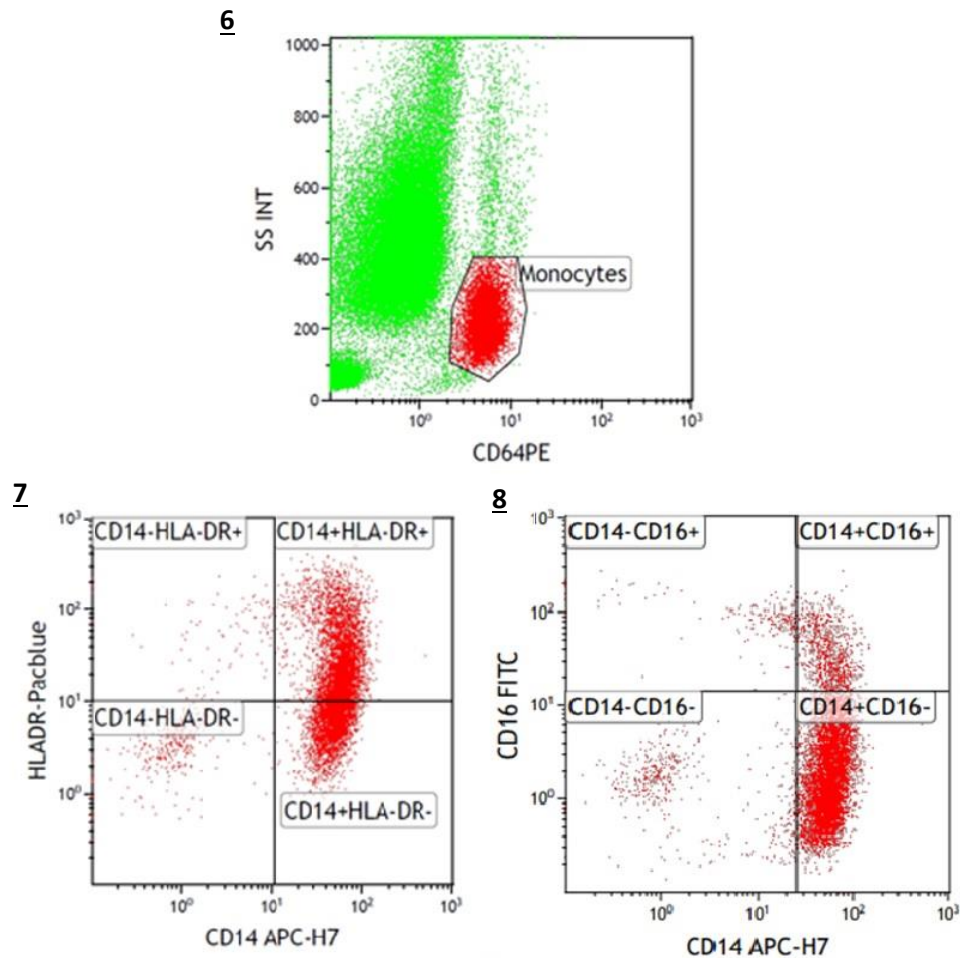
## 1.1 Lymphocytes



Lymphocytes were gated using CD45 and side scatter dot blots (1). T lymphocyte and B lymphocyte cell counts were calculated from a CD3 and CD19 dot blot (4). NK cells were gated and cell counts were calculated using a CD3 and CD16/56

dot blot (5). CD4+ and CD8+ T lymphocytes were gated using a CD3/CD4 (2) and a CD3/CD8 (3) dot blot, respectively. Results shown are percentages derived from the general lymphocyte population.

## 1.2 Monocytes



Monocytes were gated using an SSC and CD64 dot blot (6) and were further gated into subpopulations. HLA-DR was used as a marker of activation of CD14+ monocytes (7). Classical, non-classical and intermediate monocytes were gated using a CD14/CD16 dot blot (8).