

## Product Datasheet

# alpha smooth muscle Actin Antibody



Catalog No: CY1132

Reactivity: Human, Mouse, Rat

Isotype: Rabbit IgG

Applications: WB IHC ICC/IF FC

[www.abways.com](http://www.abways.com)

### Information

**UniProt ID:** P62736

**All Names:** Actin, aortic smooth muscle, Alpha-actin-2, Cell growth-inhibiting gene 46 protein, ACTA2, ACTSA, ACTVS, GIG46

**Form:** Liquid

**Storage instructions:** Store at +4°C short term. Store at -20°C long term. Avoid freeze / thaw cycle.

**Storage buffer:** pH 7.4, 150mM NaCl, 0.02% sodium azide and 50% glycerol.

**Purity:** Affinity-chromatography

**Immunogen:** A synthesized peptide

**Molecular Wt.:** 42 kDa

### Application

WB: 1:1000~1:10000

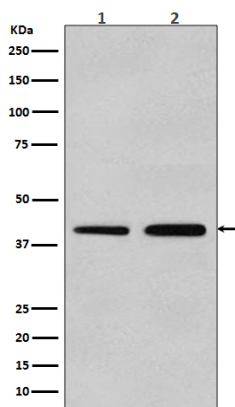
IHC: 1:50~1:200

ICC/IF: 1:50~1:200

FC:1:20

### Background

Component of intercellular desmosome junctions. Involved in the interaction of plaque proteins and intermediate filaments mediating cell-cell adhesion. Defects in ACTA2 are the cause of aortic aneurysm familial thoracic type 6 (AAT6) [MIM:611788]. AATs are characterized by permanent dilation of the thoracic aorta usually due to degenerative changes in the aortic wall. They are primarily associated with a characteristic histologic appearance known as 'medial necrosis' or 'Erdheim cystic medial necrosis' in which there is degeneration and fragmentation of elastic fibers, loss of smooth muscle cells, and an accumulation of basophilic ground substance.



Western blot analysis on (1)A549 cell lysate;(2)C2C12 cell lysate using alpha-SMA antibody.

**For Research Use Only. Not For Use In Diagnostic Procedures.**

[www.abways.com](http://www.abways.com)