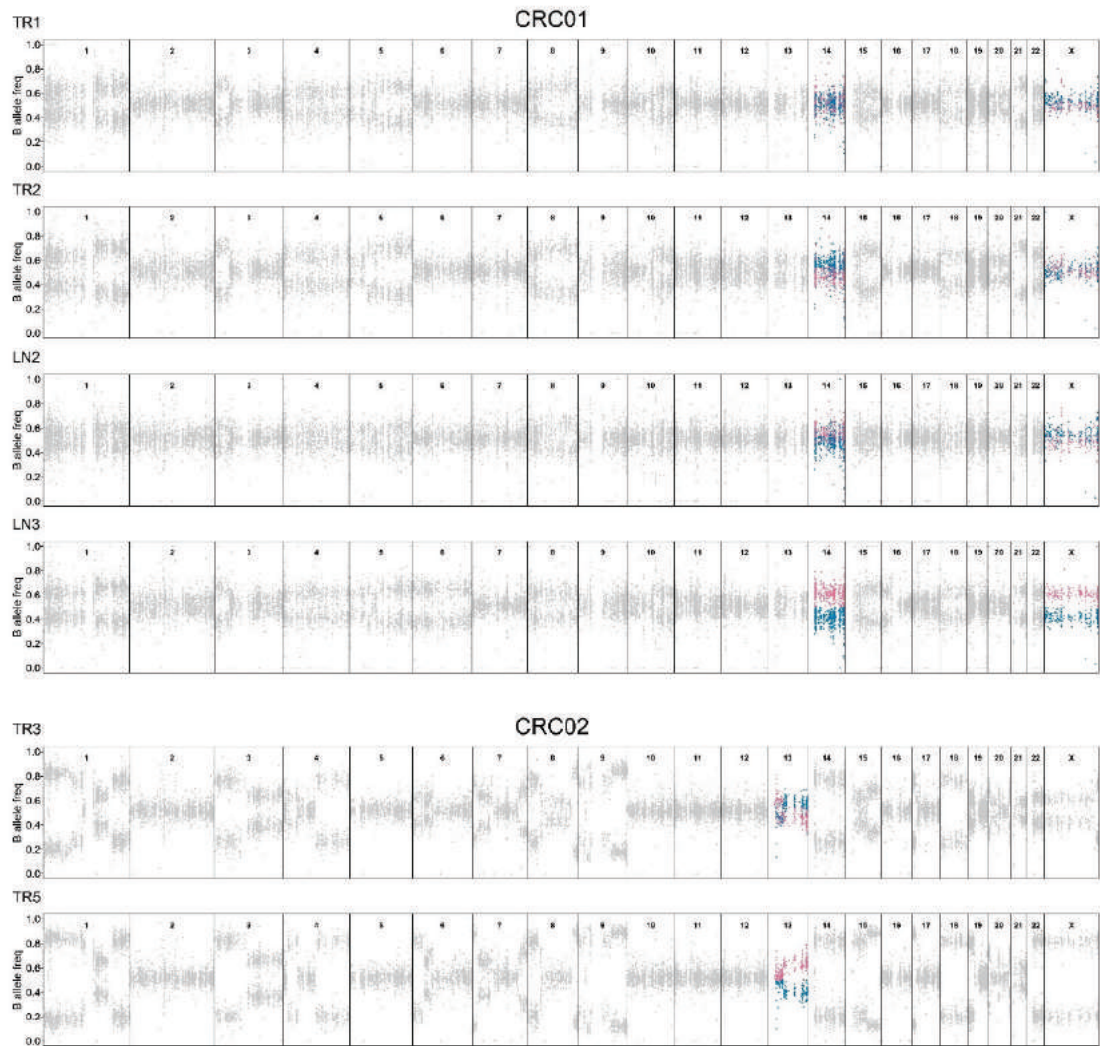
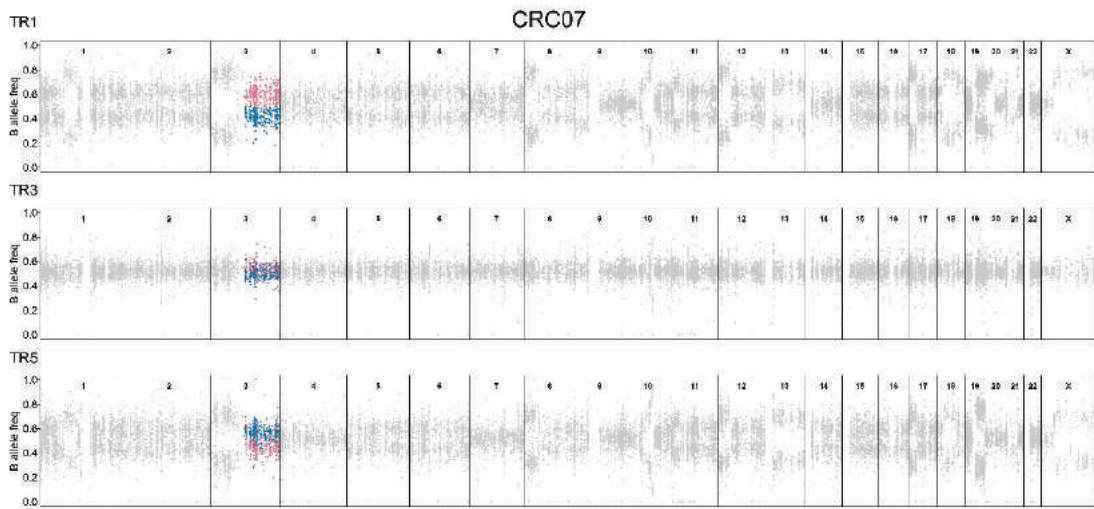
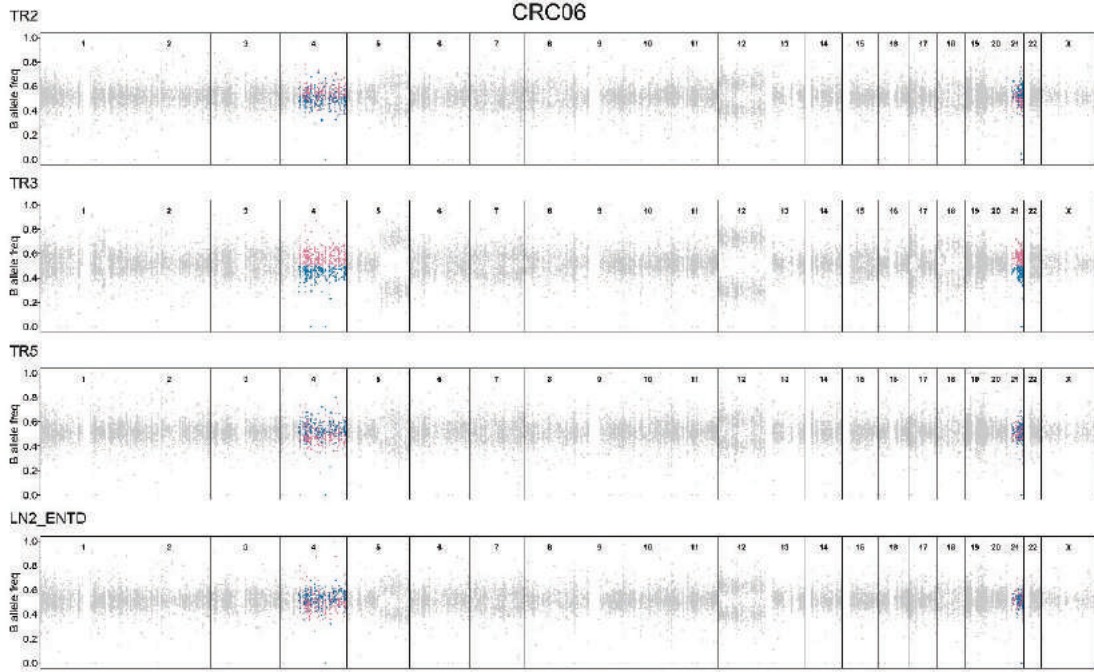


## Supplemental Data 2

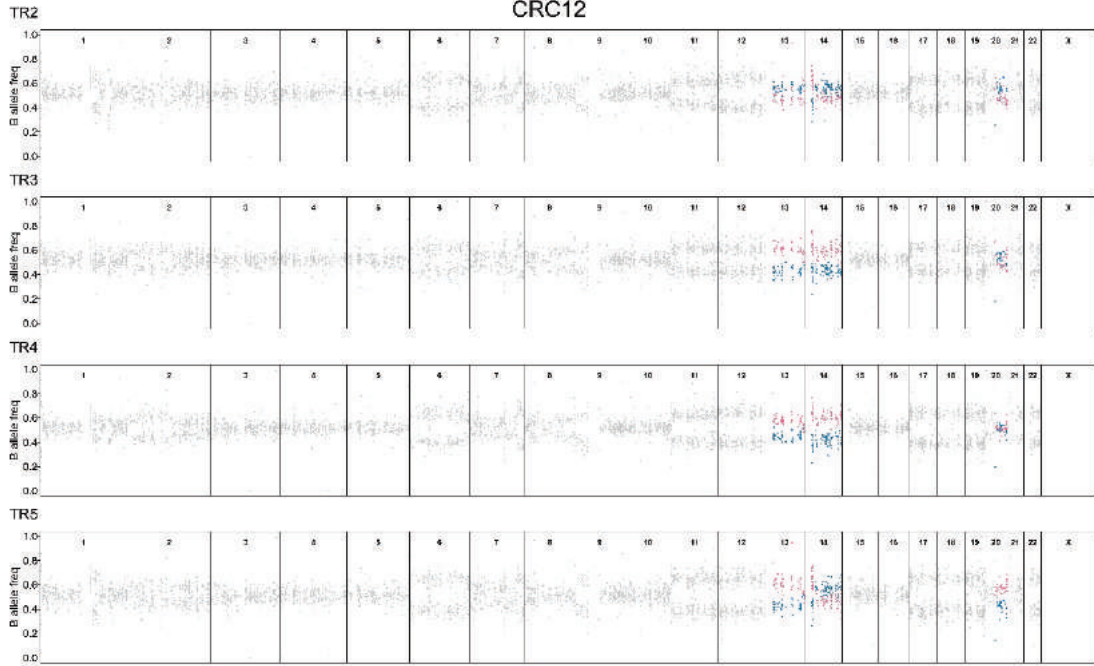


### Supplemental Data 2. Mirrored subclonal allelic imbalance (MSAI) events in CRC tumors, Related to Figure 6.

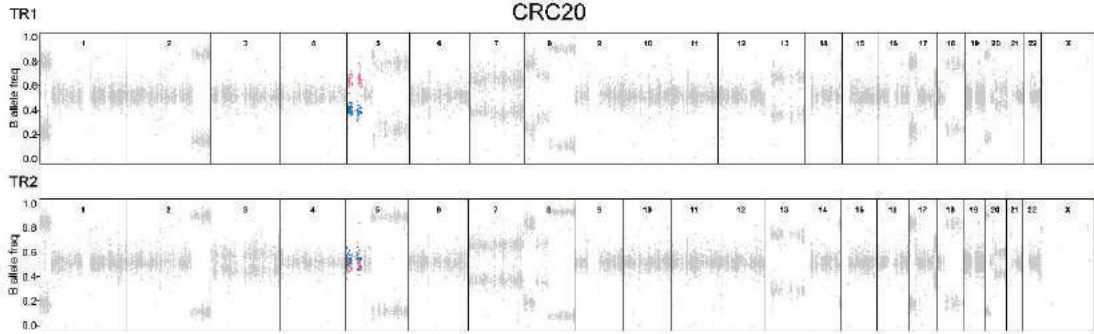
B-allele frequency (BAF) profile of heterozygous SNPs across the genome (chromosomes 1-22, X) from all regions of different tumors. Sections of BAF in regions that have MSAI were highlighted in blue or red.



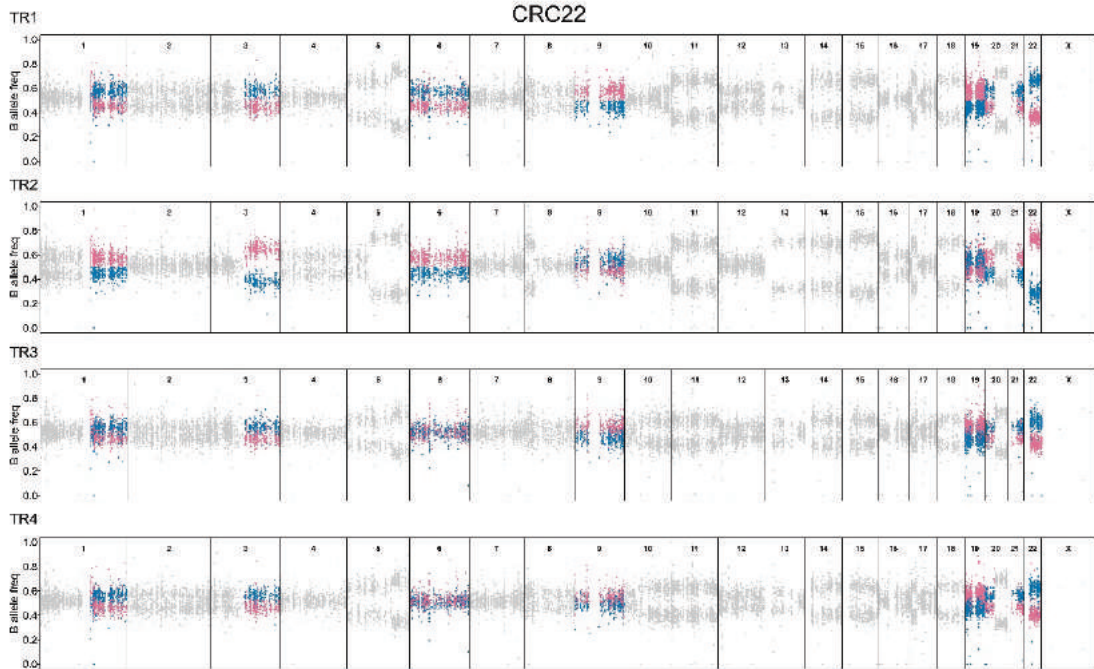
### CRC12



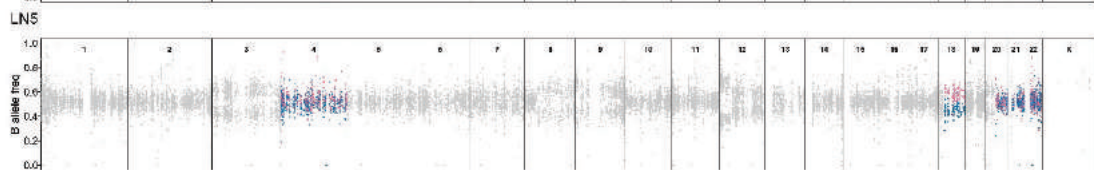
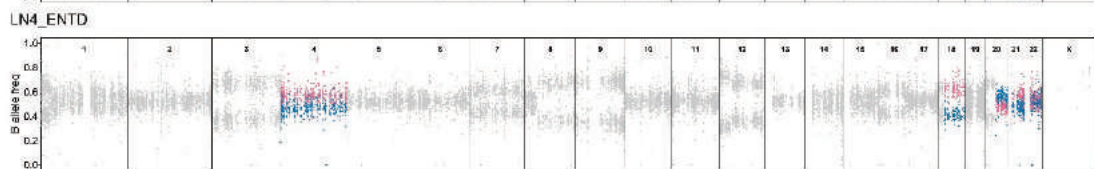
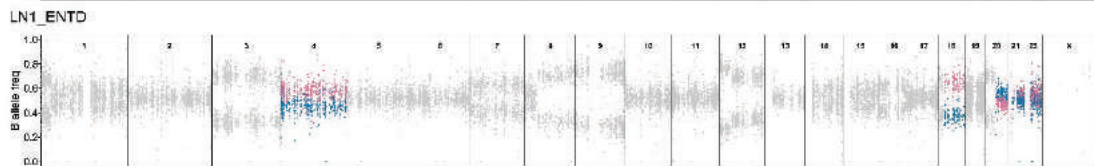
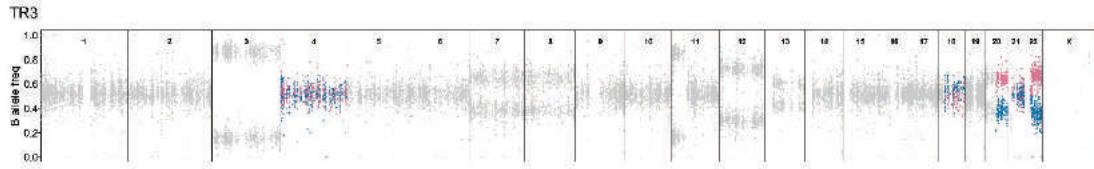
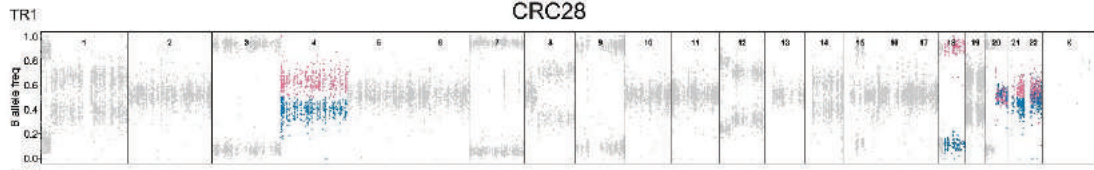
### CRC20



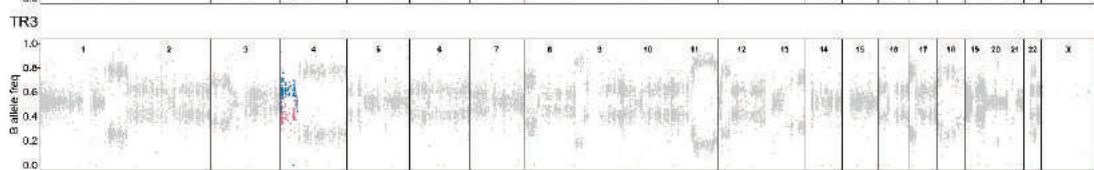
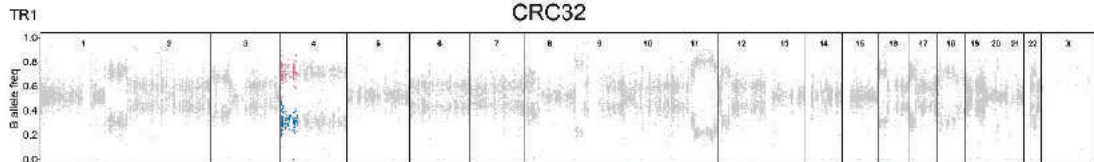
### CRC22

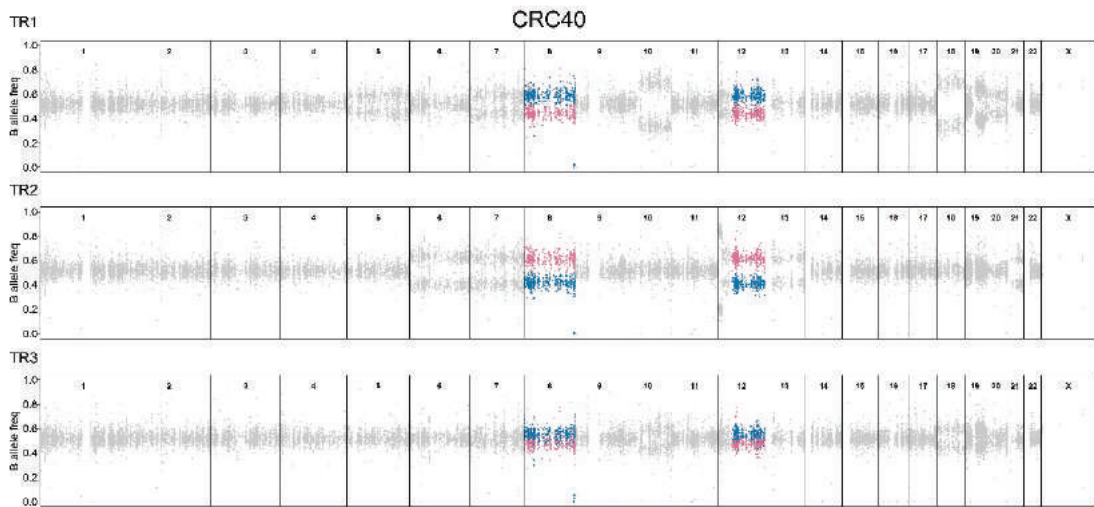
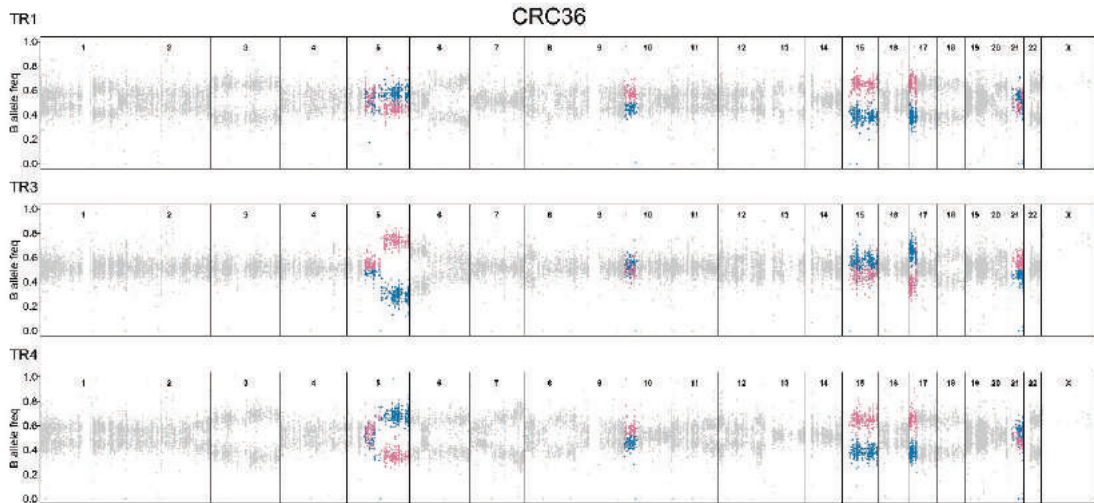
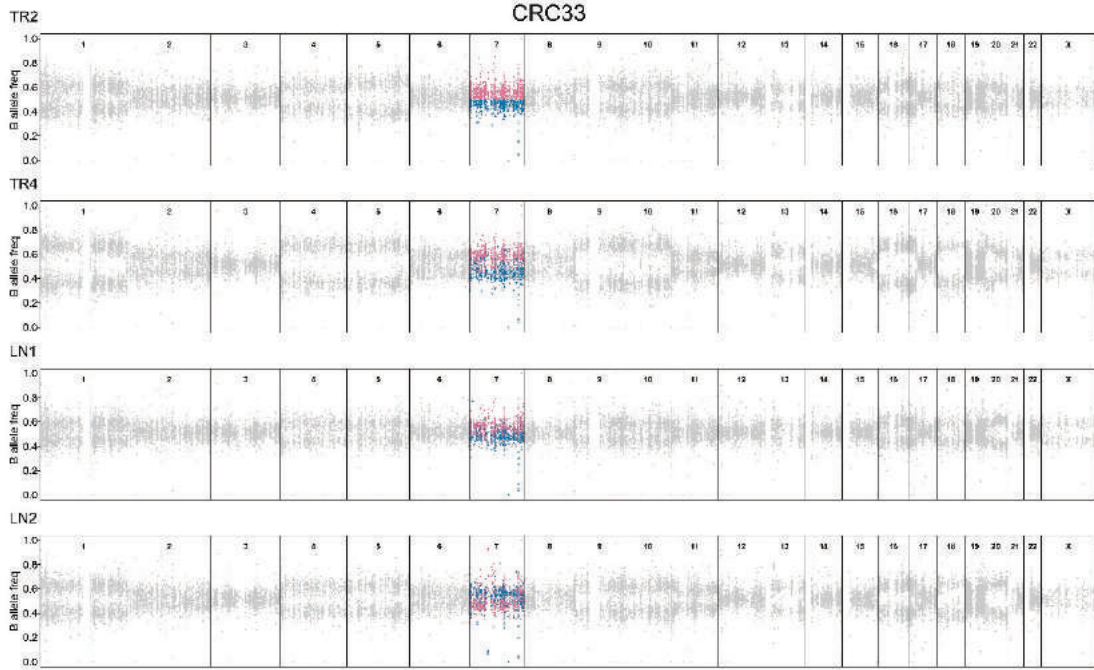


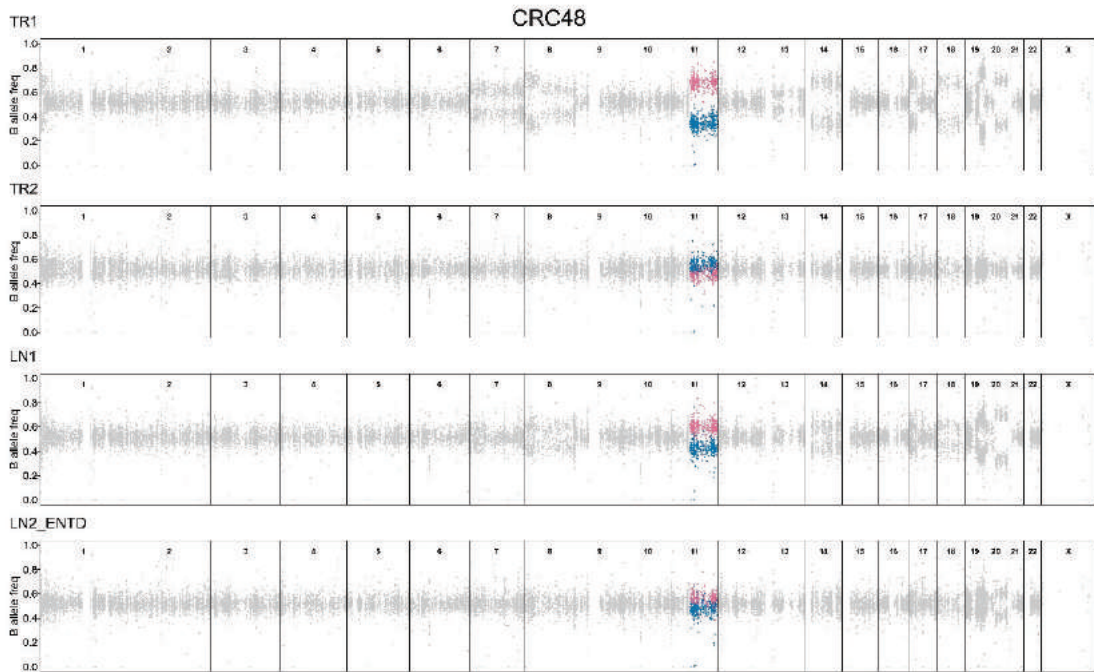
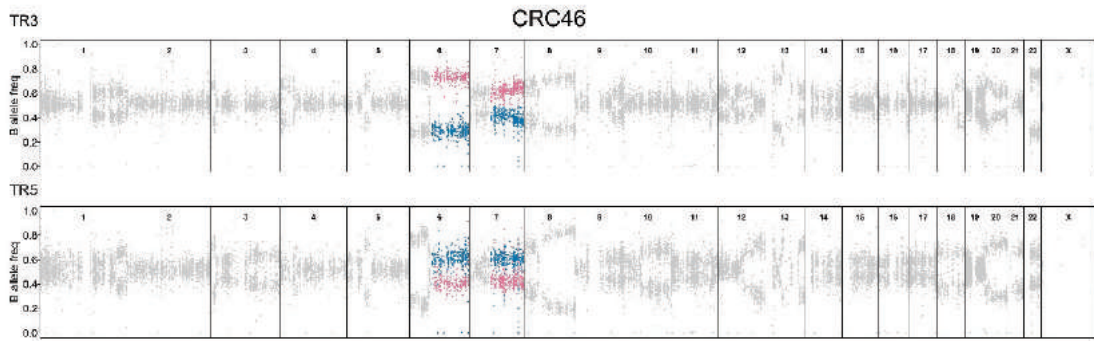
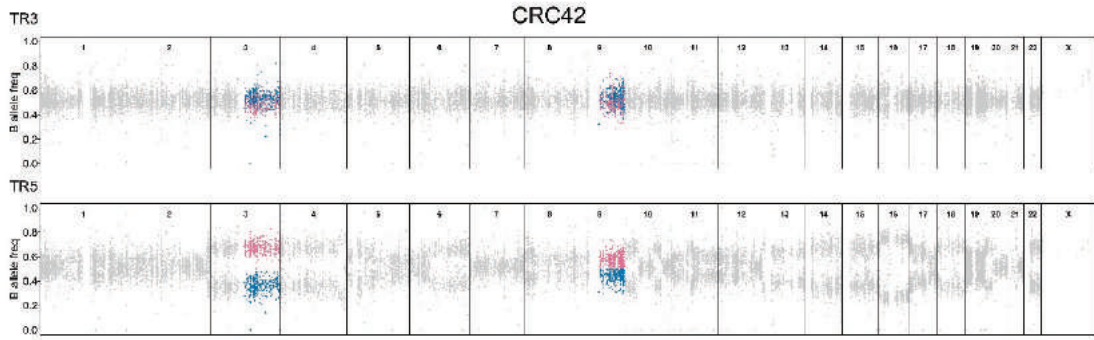
CRC28

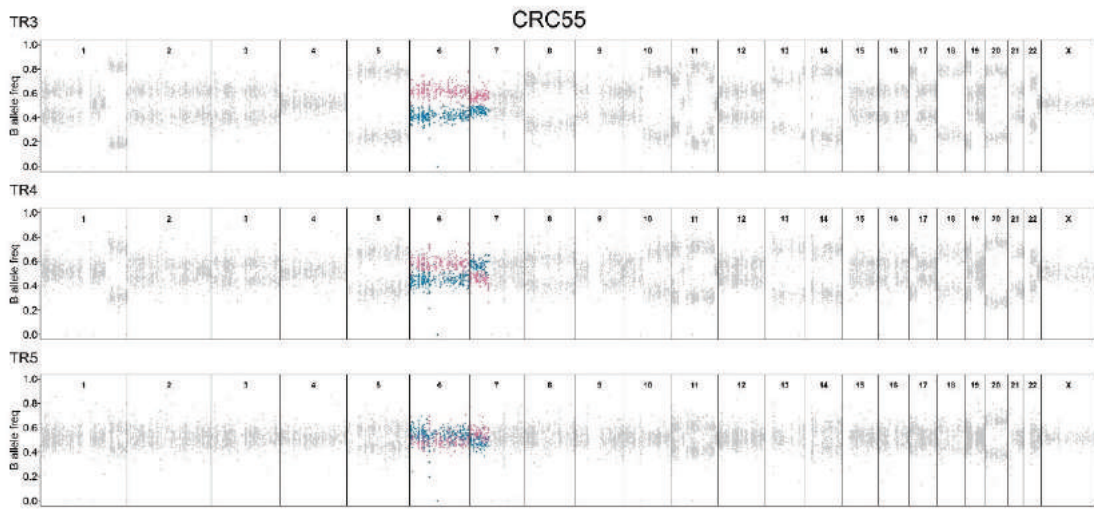
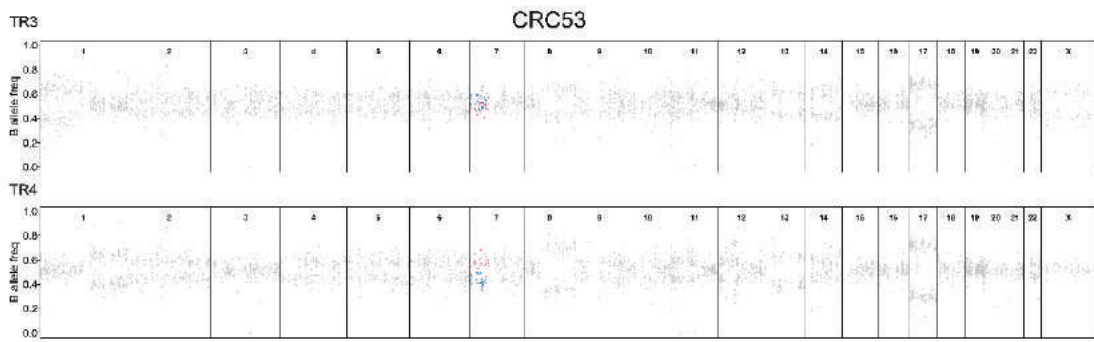
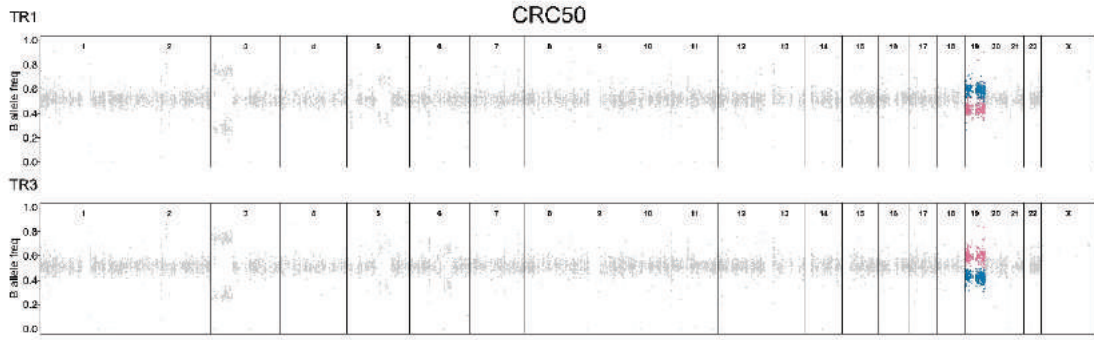


CRC32

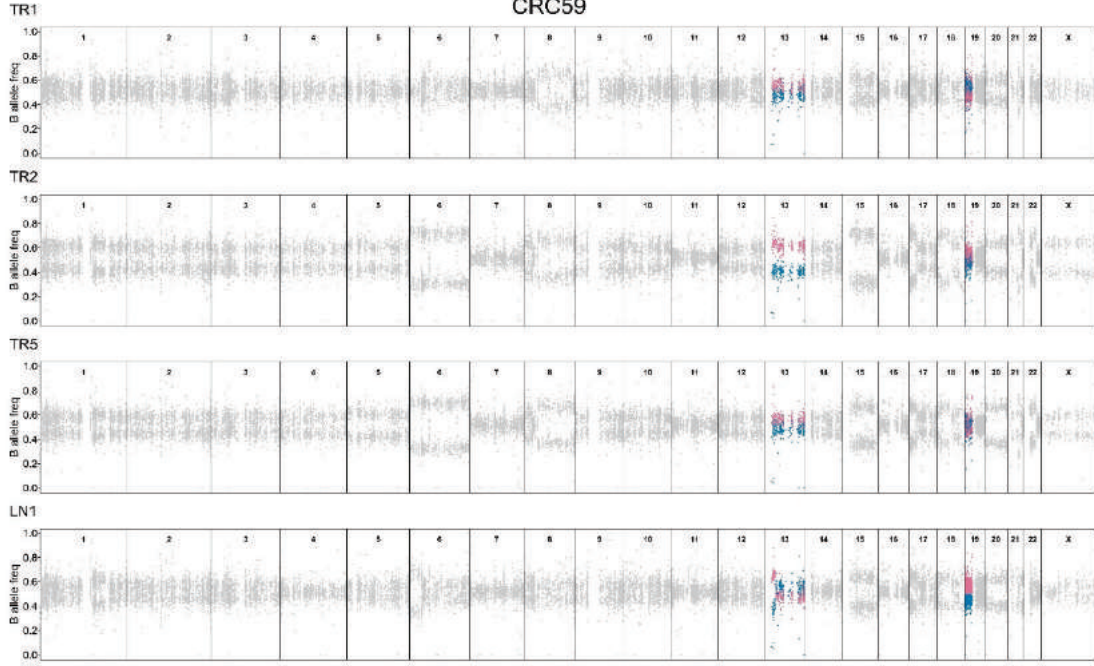




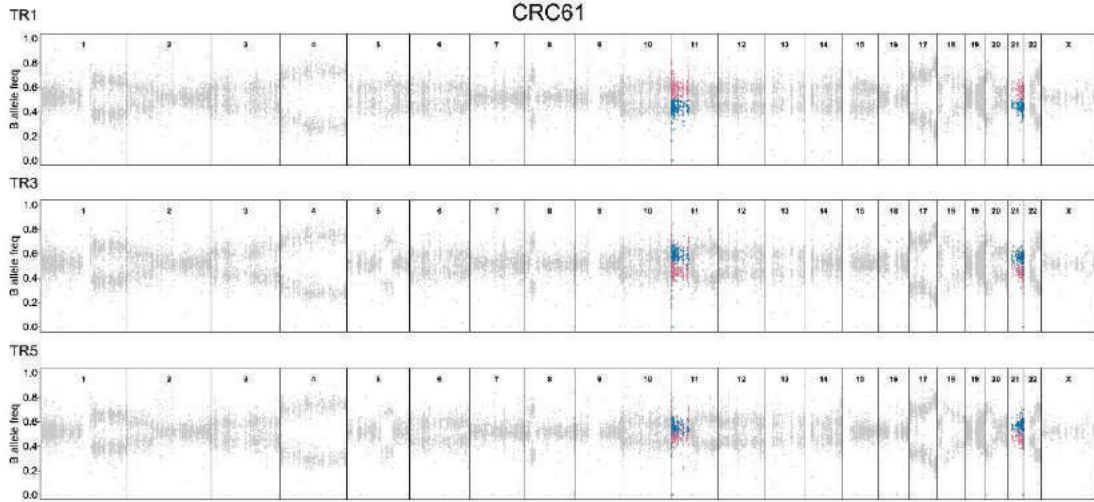




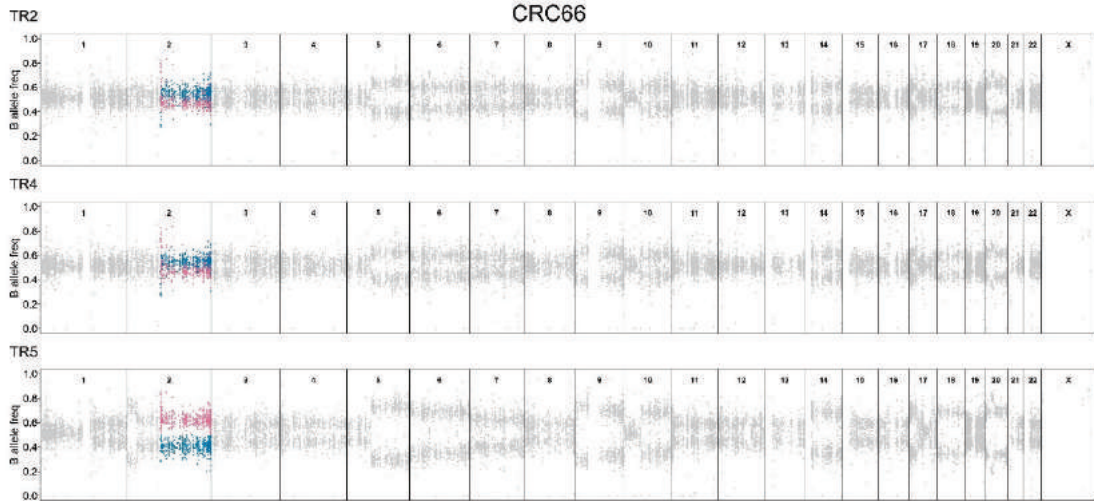
### CRC59



### CRC61

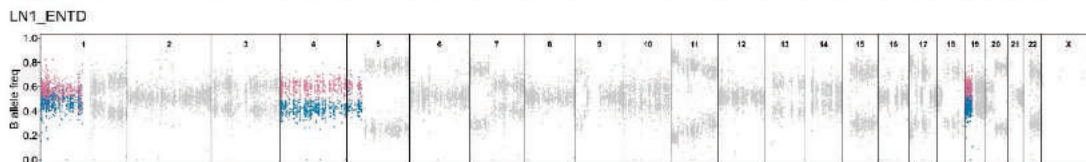
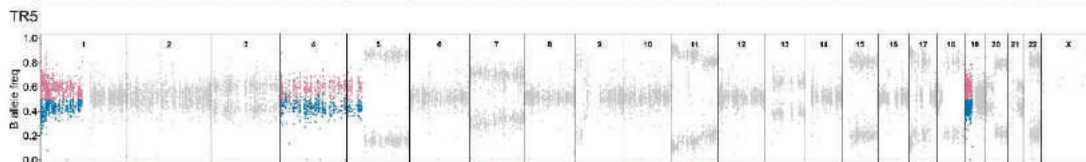
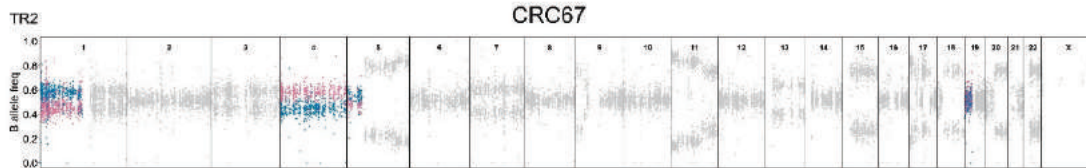


### CRC66





CRC67



CRC68

