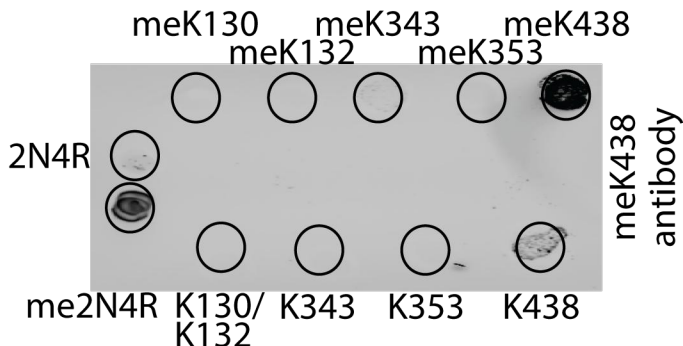
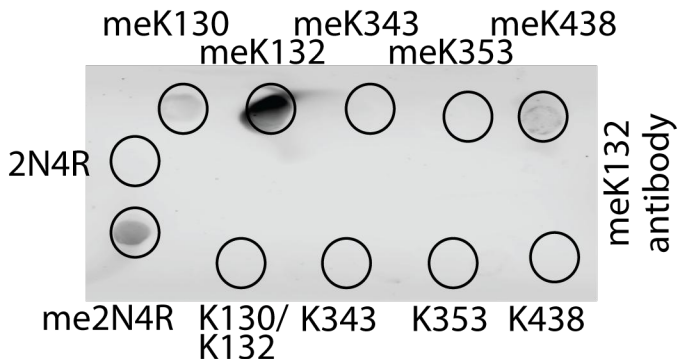
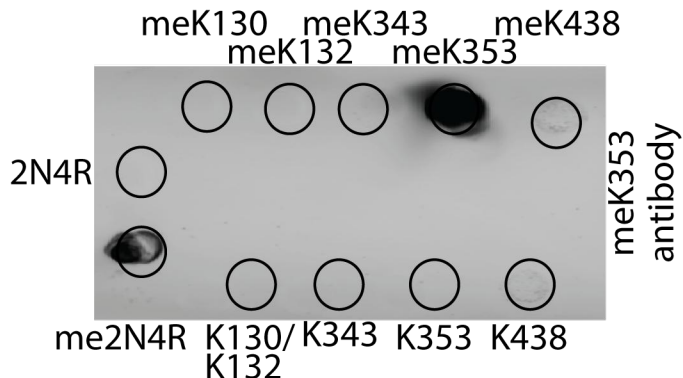
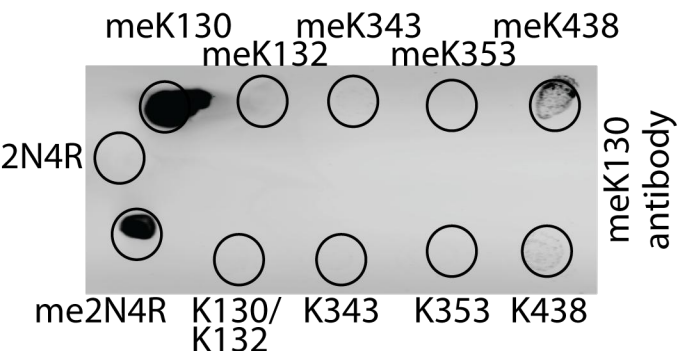
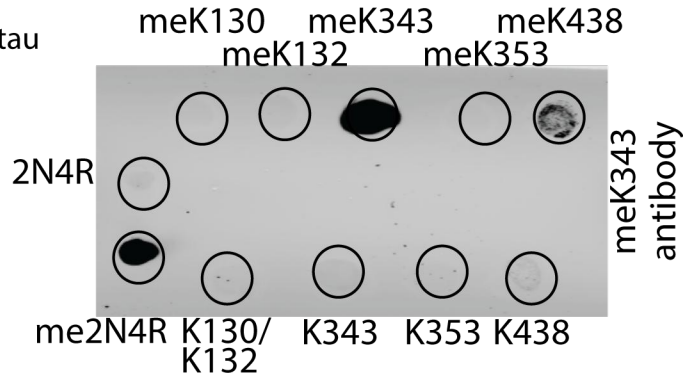
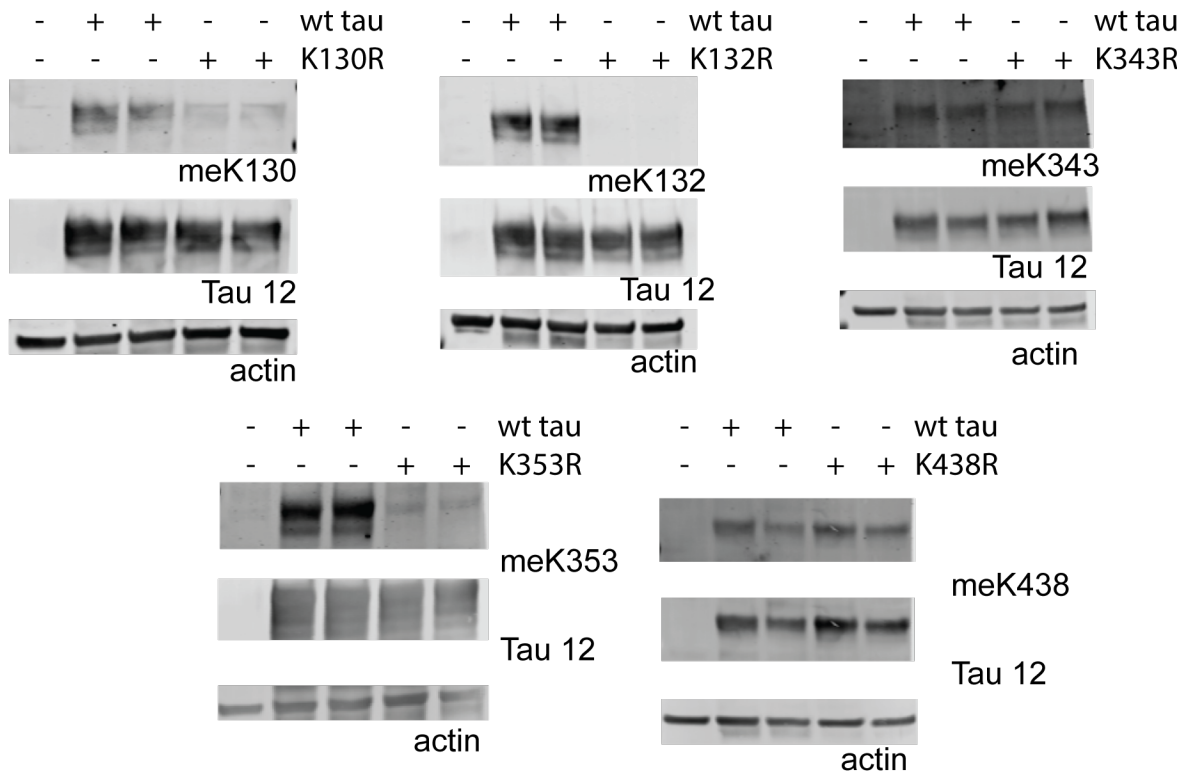
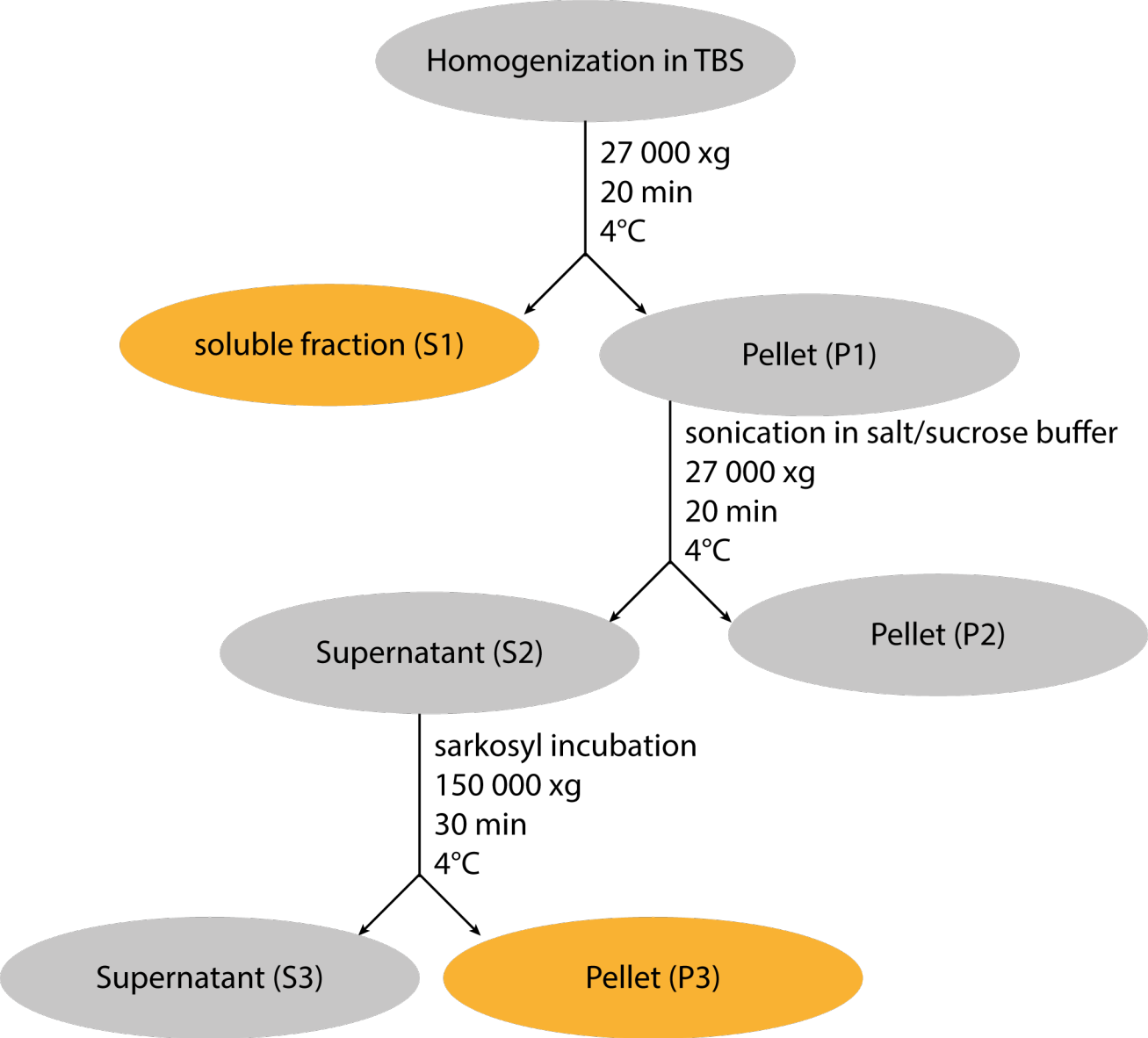
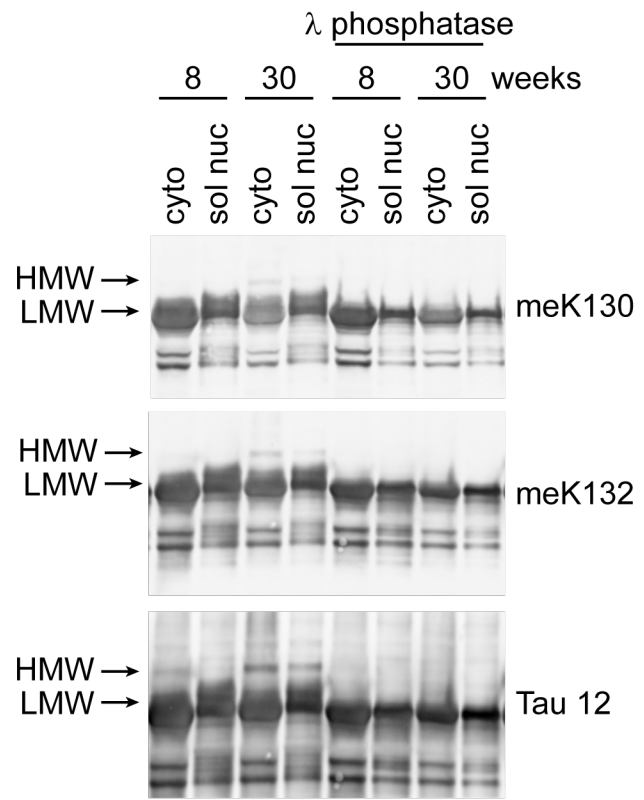
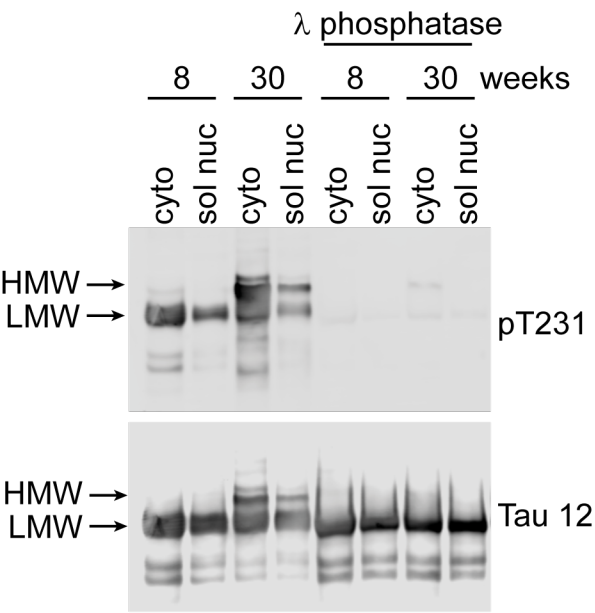


2N4R recombinant tau  
 me2N4R in vitro methylated recombinant tau  
 meK130 CQARMVSK(me)SKDGTG-NH2  
 meK132 CRMVSKSK(me)DGTGSD-NH2  
 meK343 CVEVKSEK(me)LDFKDR-NH2  
 meK353 CKDRVQSK(me)IGSLDN-NH2  
 meK438 CDEVSASLAK(me)QGL-NH2  
 K130/K132 CQARMVSKSKDGTGSD-NH2  
 K343 CVEVKSEKLDFKDR-NH2  
 K353 CKDRVQSKIGDLDN-NH2  
 K438 CDEVSASLAKQGL-NH2



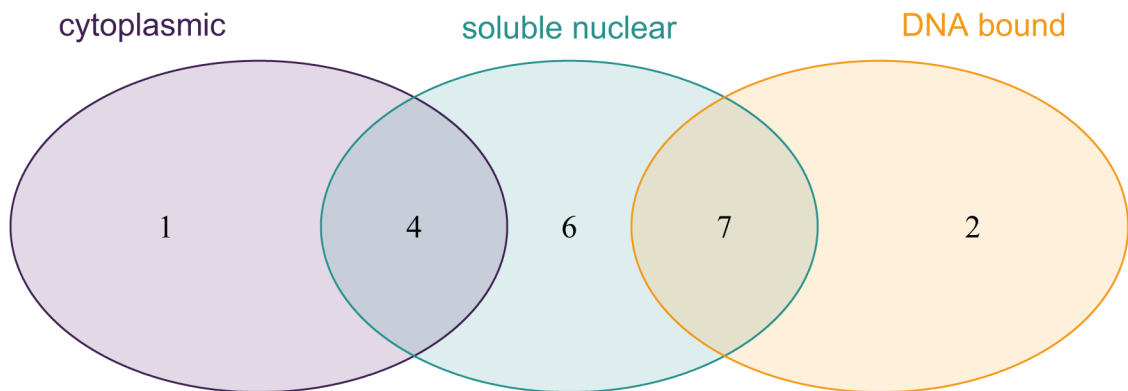




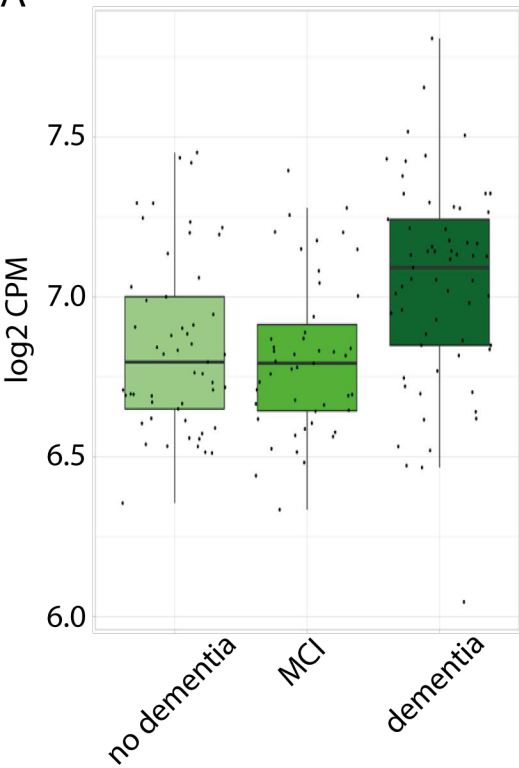
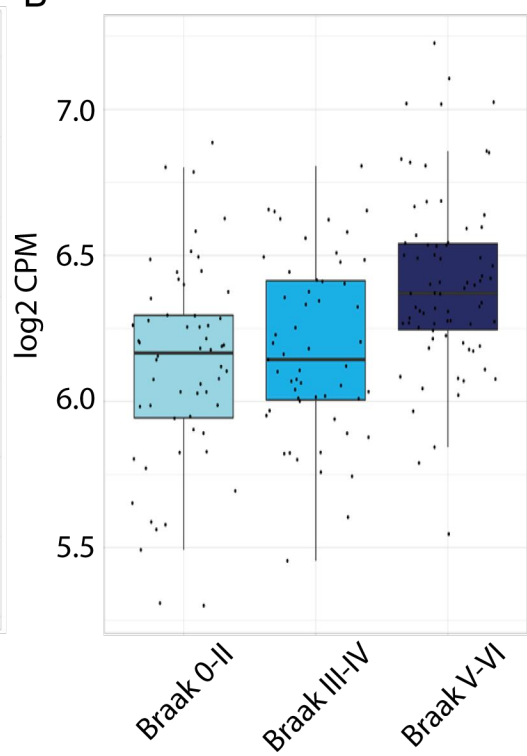
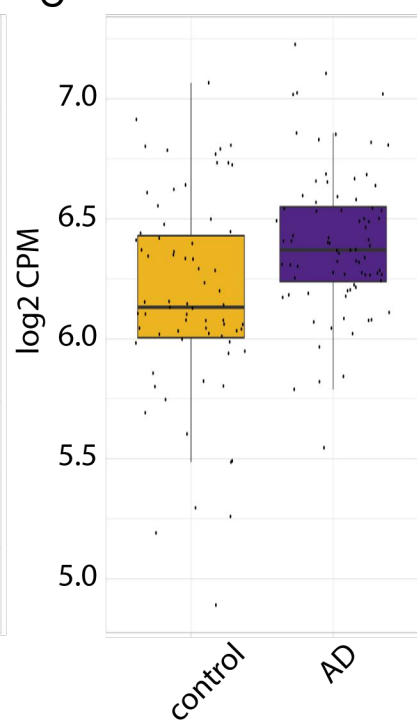


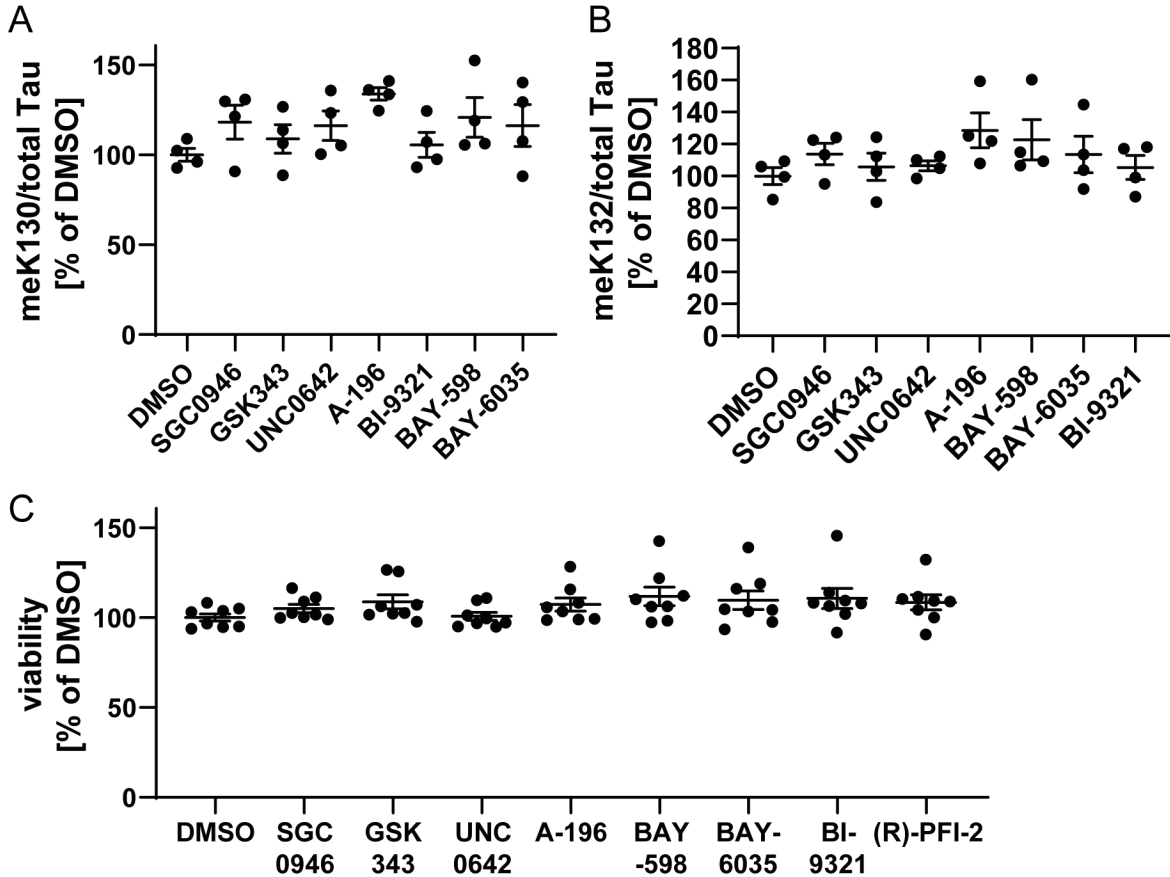
Suppl Figure S4

## Localization of Protein Lysine Methyltransferases

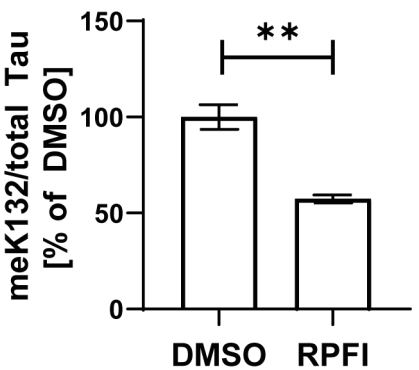
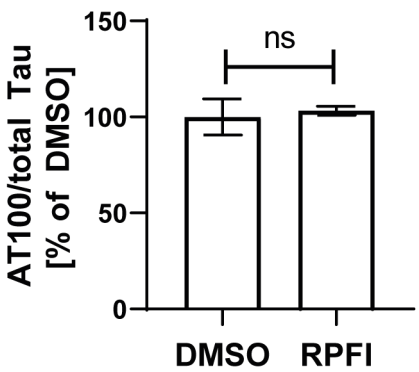
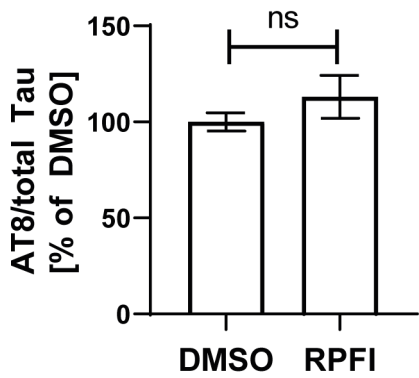


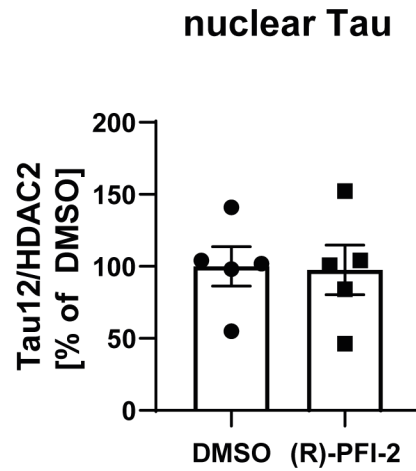
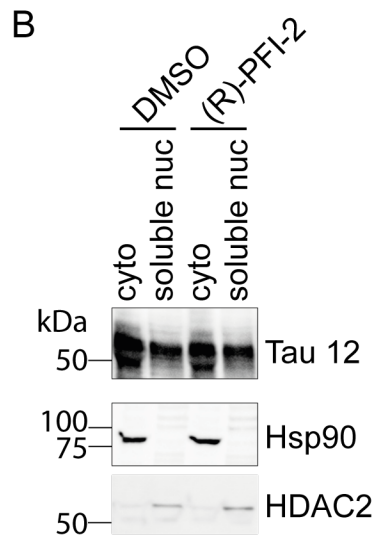
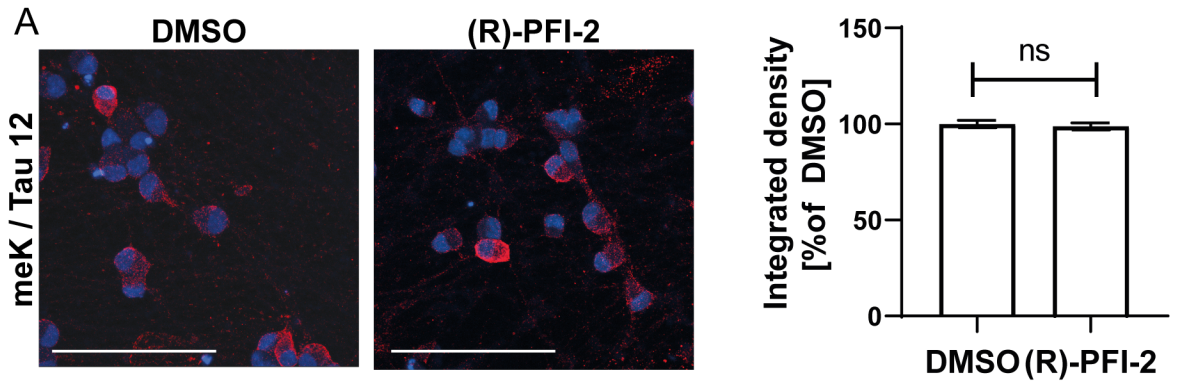


**A****B****C**

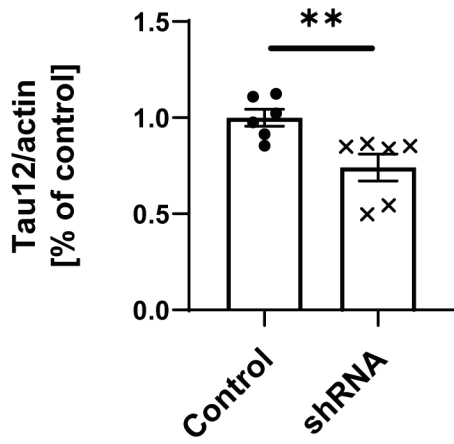








A



B

