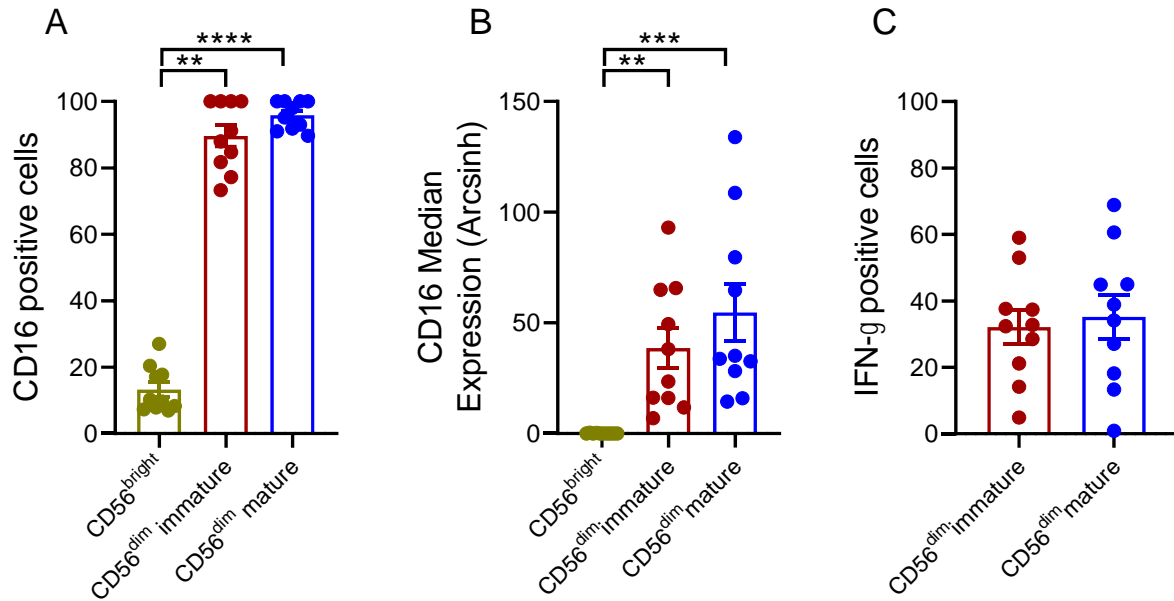


Supplementary Fig. S2



Supplementary Fig. S2. CD16 expression and IFN- γ production of blood mature and immature NK cells. (A) Frequency of positive cells and (B) median expression of CD16 on unstimulated CD56^{bright} and CD56^{dim} immature and mature NK cells. CD56^{dim} immature NK cells were defined as CD56^{bright}CD16⁻NKG2A⁺CD94⁺KIR⁻CD57⁻ and CD56^{dim} mature NK cells as CD56^{dim}CD16⁺NKG2A⁻CD57⁺. (C) Frequency of IFN- γ positive cells in CD56^{bright} and CD56^{dim} immature and mature NK cells stimulated with AFM13. Bars represent mean + SEM. Kruskal Wallis test with Dunn's post hoc test. **p<0.01, ***p<0.001, ****p<0.0001. n=10.