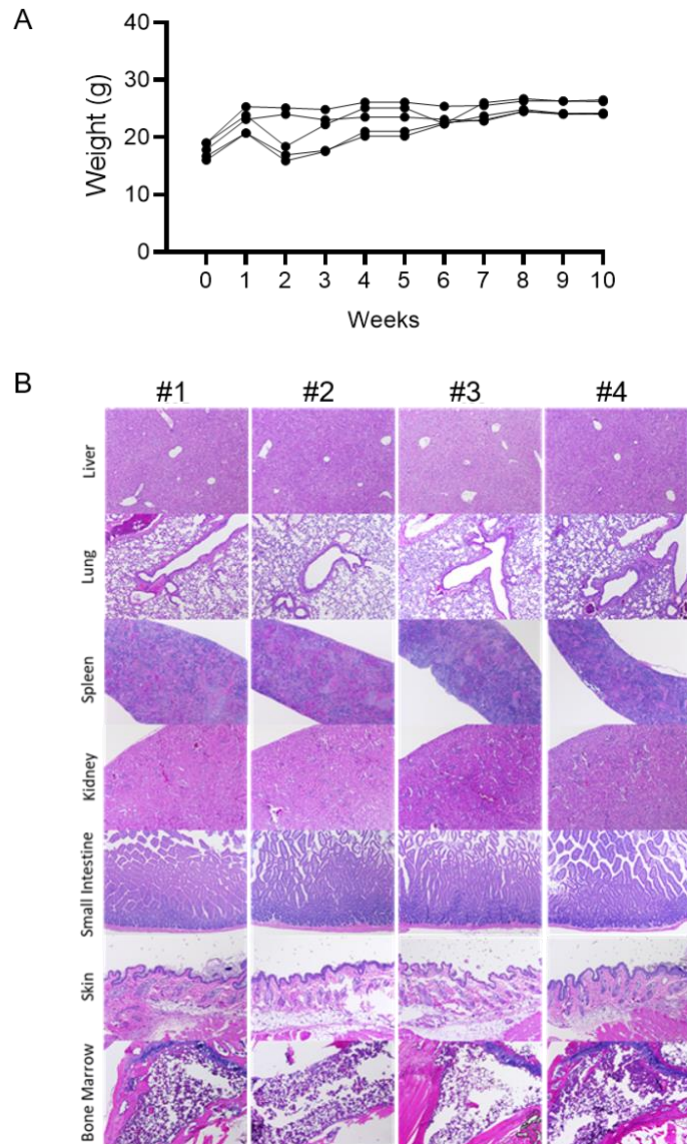


Supplementary Fig. S8



Supplementary Fig. S8. AFM13 loaded and washed P+E CB-NK cells are safe without in vivo evidence of autonomous or dysregulated growth. (A) NSG mice treated with 10×10^6 AFM13-NK cell complex (P+E CB NK cells incubated with $100 \mu\text{g/ml}$ of AFM13 for 1 hour) showed stable weight for more than 10 months of follow up. Each solid line represents one animal. (B) NSG mice >1 year old after treatment with 10×10^6 AFM13-NK cell complex were sacrificed and examined for dysregulated NK cell growth or end-organ damage. Photomicrographs of H&E staining of lung, spleen, kidney, small intestine, skin and bone marrow show no evidence of pathology. All images are at 5x magnification.