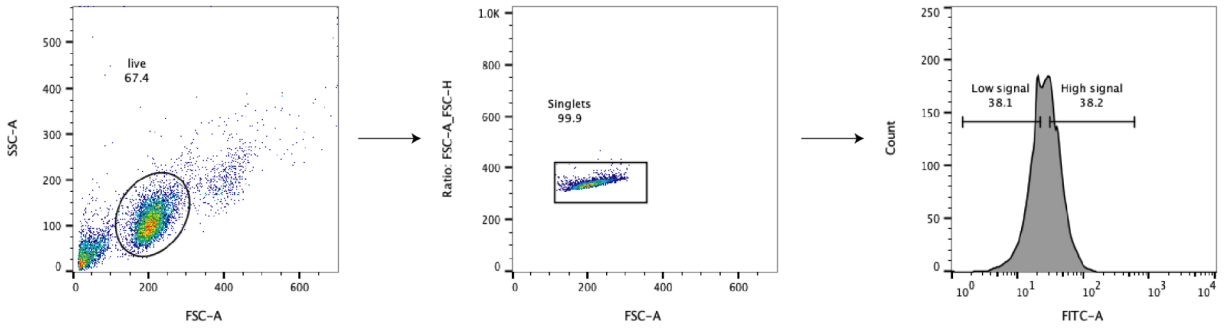
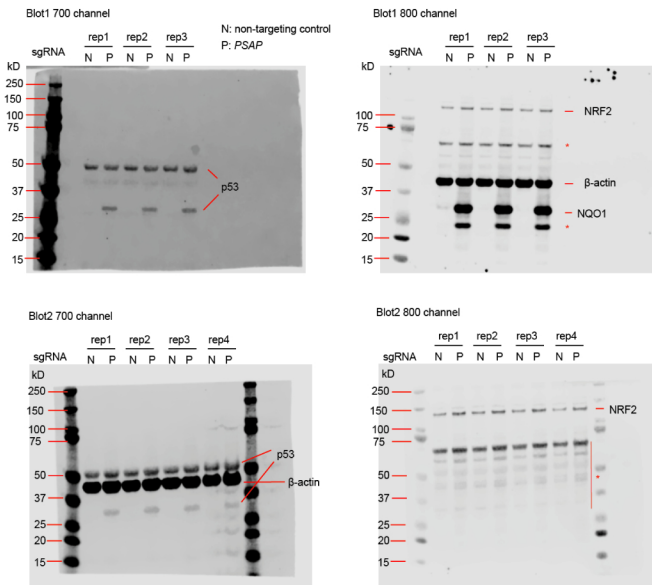


a



b



Supplementary Figure 1: Gating strategy for FACS-based screens and original images of western blots.

(a) Intact neurons were identified from the FSC-SSC plot and then gated for singlets. These cells were sorted into high and low signal populations corresponding to the top 40% and the bottom 40% of the staining signal distribution.

(b) Original western blots images for Fig. 6e & f. Lysates from CRISPRa neurons expressing the non-targeting control sgRNA or PSAP sgRNA were subjected to SDS-PAGE and Western blotting, and probed for p53, β -actin, NRF2 and NQO1 in two independent experiments. The blots were imaged using the LI-COR system in the 700 and 800 channels. Asterisks (*) label unspecific or indeterminate bands.