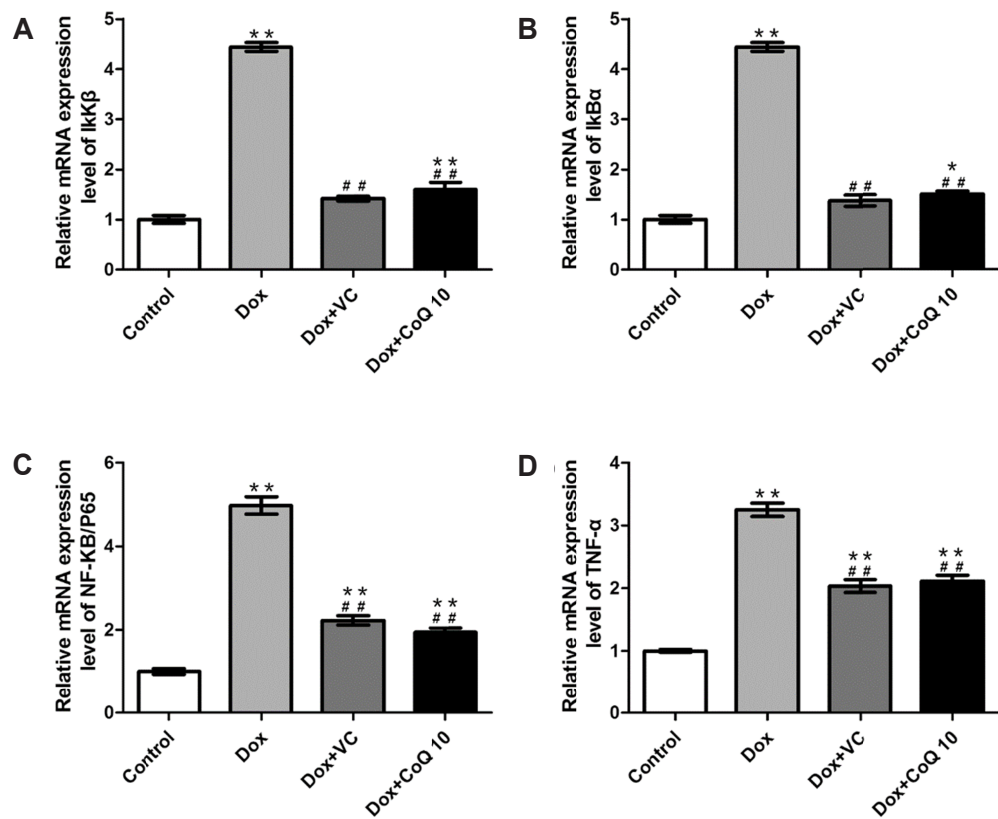
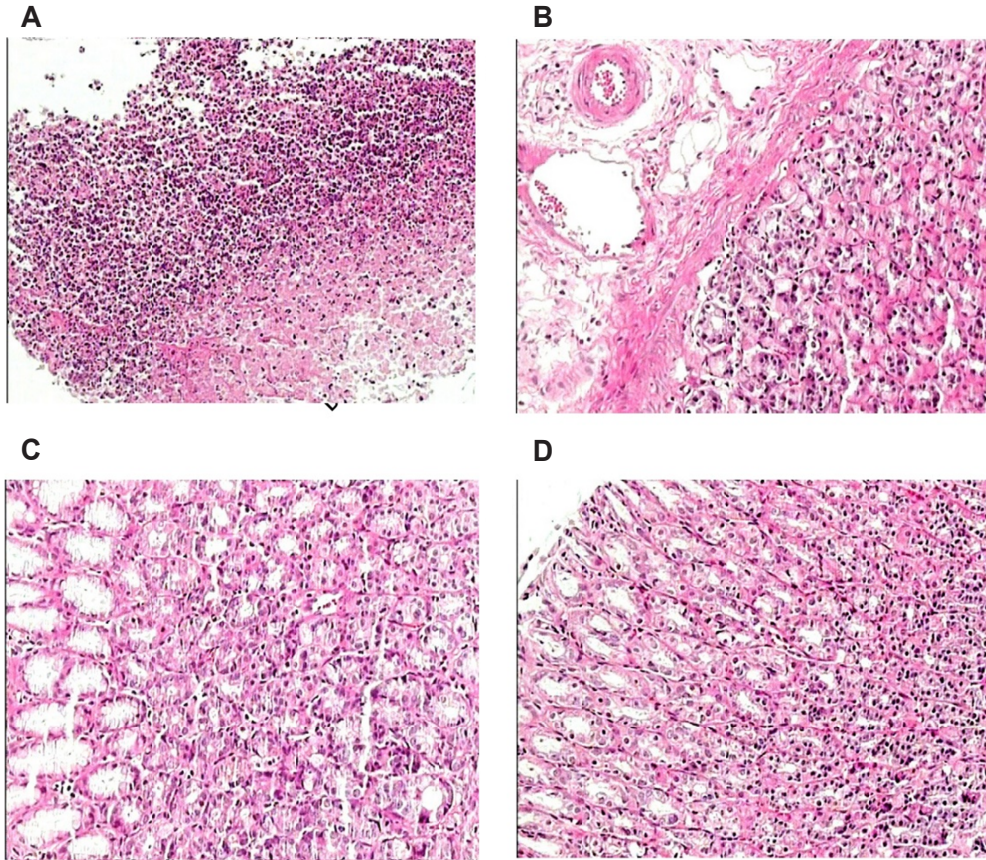


Supplementary Fig. 1. Effects of Dox, VC and CoQ10 on the viability of GES-1 cells. Dox, doxorubicin; CoQ10, coenzyme Q10; VC, vitamin C. * $p < 0.05$ (vs. control), ** $p < 0.01$ (vs. control), # $p < 0.05$ (vs. Dox); and ## $p < 0.01$ (vs. Dox).



Supplementary Fig. 2. Effects of Dox, VC and CoQ10 on the expression of $I\kappa K\beta$, $I\kappa B\alpha$, NF- κ B/p65 and TNF- α mRNA levels in GES-1 cells. Dox, doxorubicin; CoQ10, coenzyme Q10; VC, vitamin C. * $p < 0.05$ (vs. control); ** $p < 0.01$ (vs. control); and ## $p < 0.01$ (vs. Dox).



Supplementary Fig. 3. H&E stain (A: Dox, B: Control, C: Dox + CoQ, D: Dox + Vc) ($\times 100$ magnification). Dox, doxorubicin; CoQ10, coenzyme Q10; VC, vitamin C.