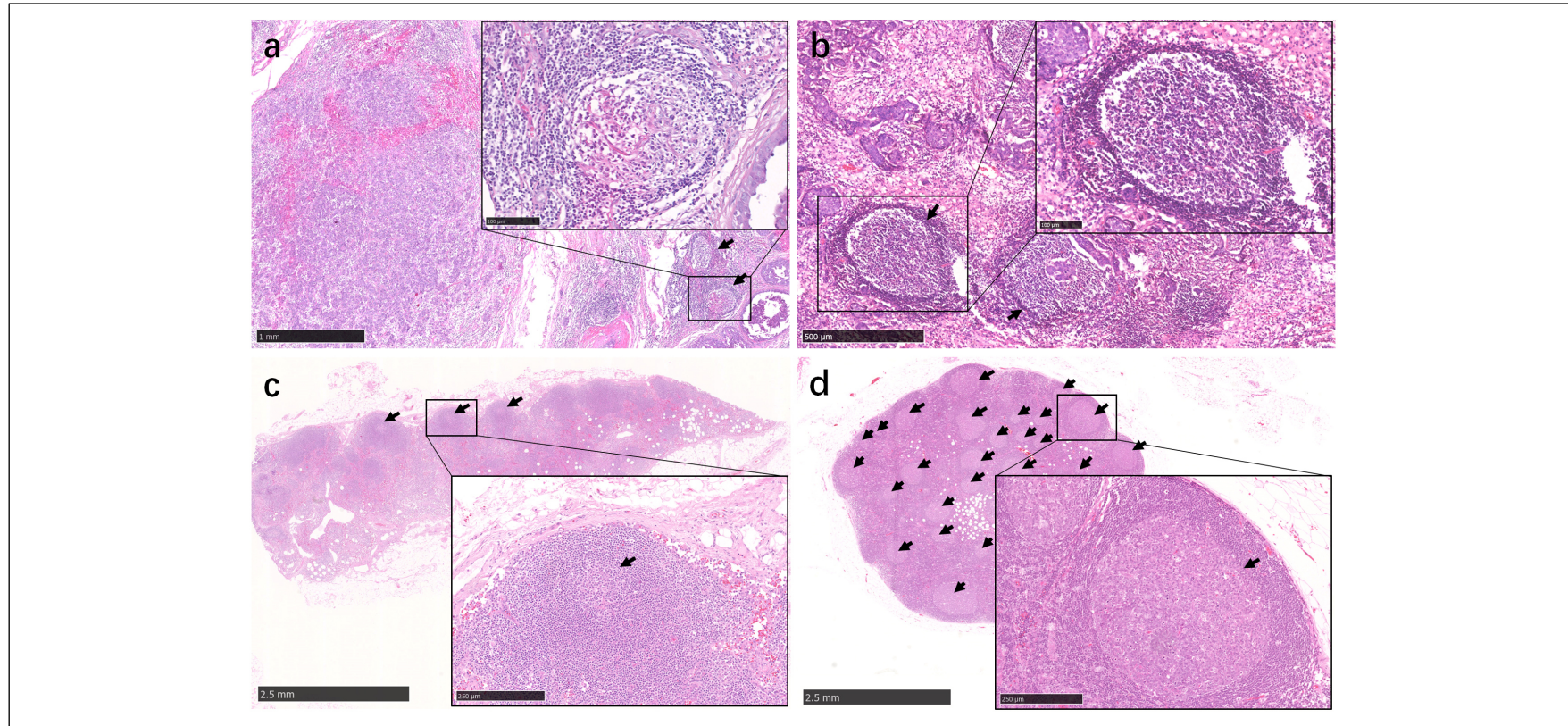


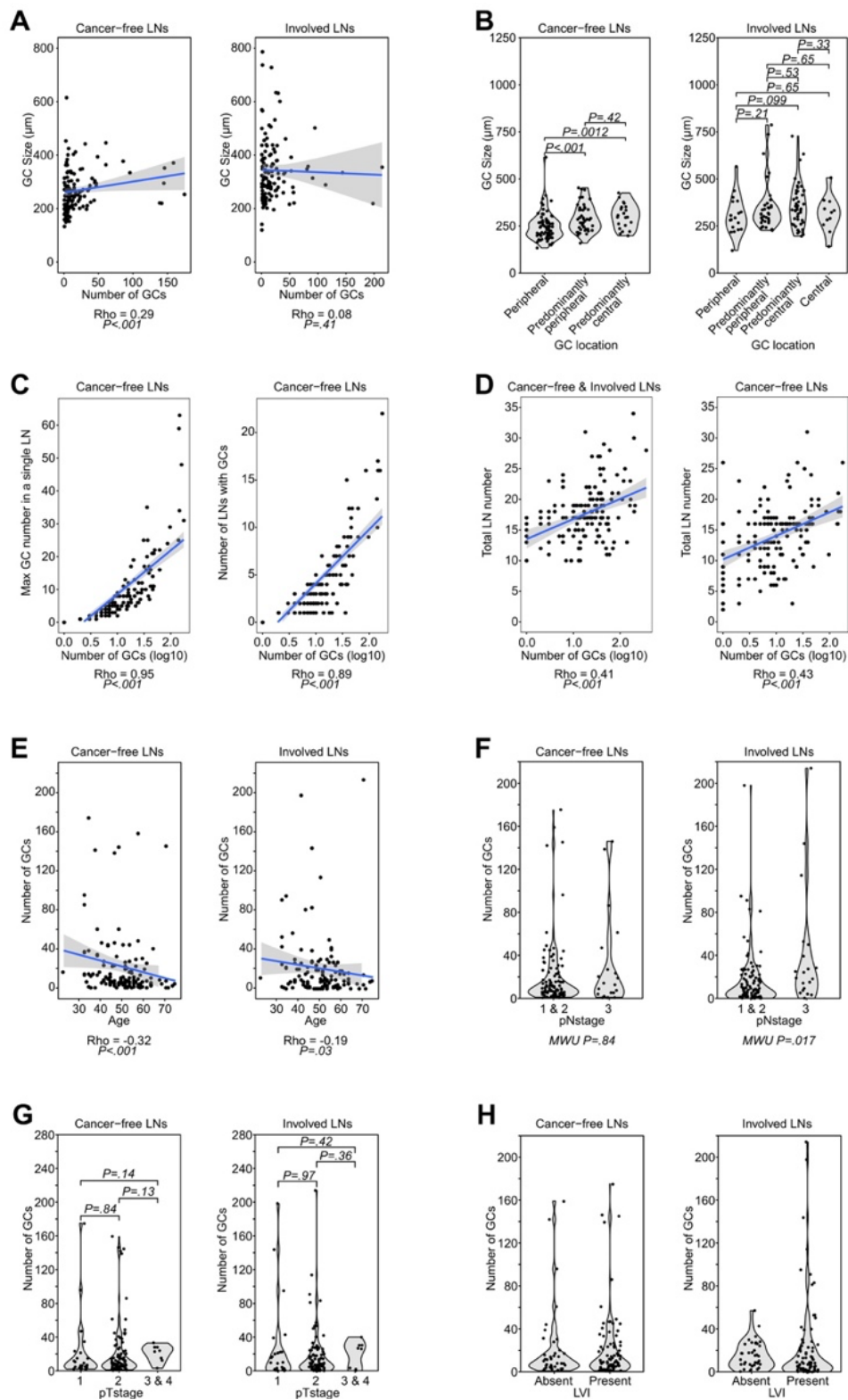
Data Supplement

Supplementary Figure 1.



Supplementary Figure 1. Examples of tertiary lymphoid structures (TLS) in primary tumor and germinal centers (GCs) in cancer-free lymph nodes. (a, b) presence of TLS (with lymphoid GC formation, arrows) in the peritumoral stroma (inset showing a higher power view of TLS); **(c)** few GCs (arrow) located close to the LN capsule (predominantly in periphery) (inset showing a higher power view of GC); **(d)** numerous GC formation (arrow); larger, rounder and fuller GCs throughout the whole LN (predominantly in the central part of the LN) (inset showing a higher power view of GC).

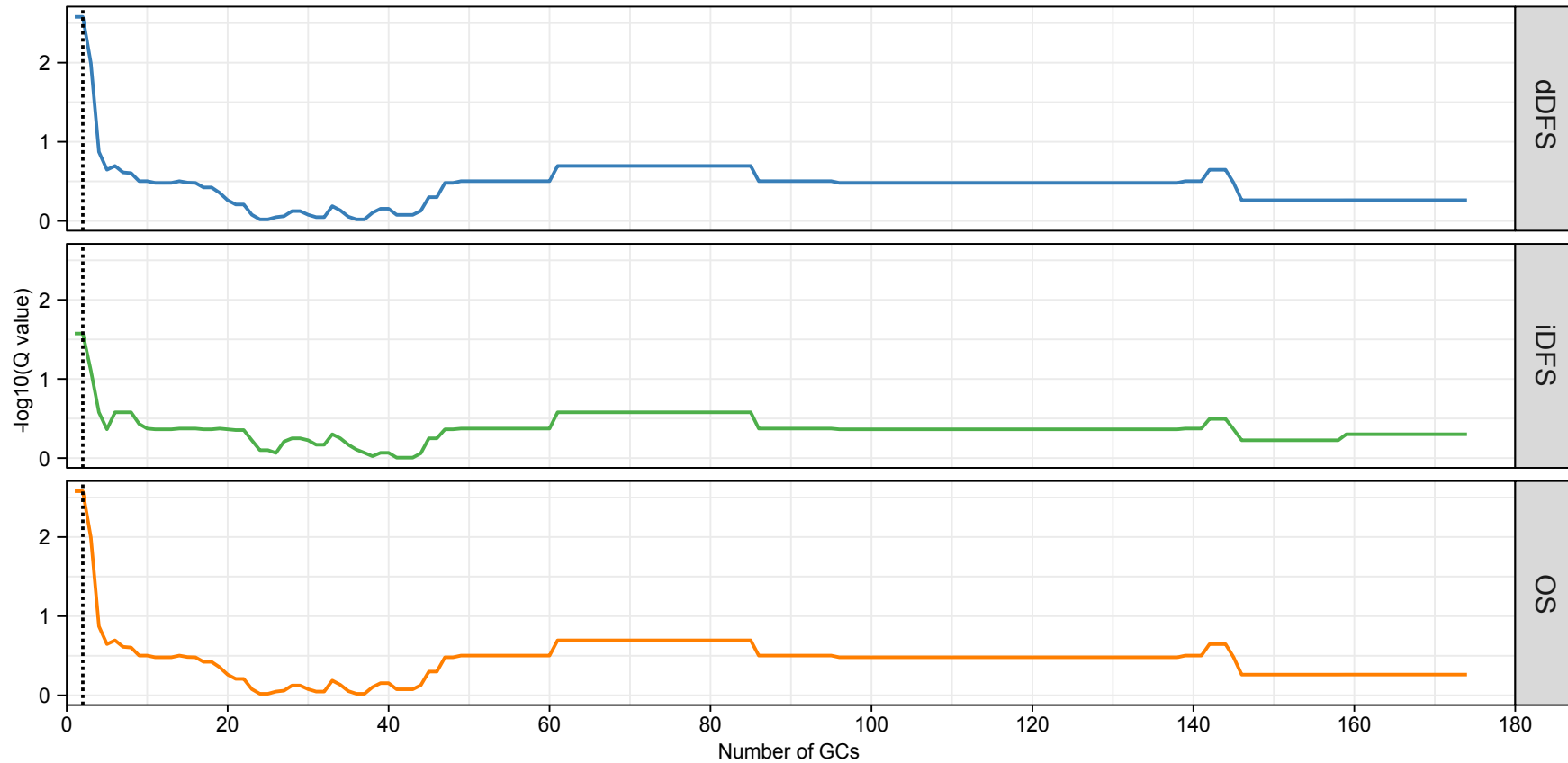
Supplementary Figure 2.



Supplementary Figure 2. Association of the number of germinal centers in cancer-free and involved lymph nodes with clinicopathological features.

(a) Scatter plots of the number of GCs compared to the maximum GC size. Cancer-free and involved LNs analysis is shown on the left and right, respectively. (b) Violin plot of maximum GC size in GC with regards to their predominant location in the LN (Peripheral (cancer-free n = 70 & involved n= 18), predominantly peripheral (cancer-free n = 70 & involved n = 34), predominantly central (cancer-free n = 21 & involved n= 11) and central (cancer-free n = 0 & involved n= 21)). P values displayed calculated via Mann-Whitney U tests. Cancer-free and involved LNs analysis is shown on the left and right, respectively. (c) Scatter plot of the log₁₀ number of GCs compared to the maximum number of GCs in a single LN (left side); and compared to the number of LNs which contain GCs (right side). (d) Scatter plots of the log₁₀ number of GCs in all assessed LNs (left) or cancer-free LNs (right) compared to the number of LNs (including those with zero GCs). (e) Scatter plots of the number of GCs in cancer-free LNs (left) or involved LNs (right) compared to age at diagnosis; (f) Violin plot of the number of GCs in cancer-free LNs (left) or involved LNs (right) compared to LN stage (pNstage 1&2 (n = 129) and pNstage 3 (n = 32)) ; (g) Violin plot, showing the distribution of GC formations in cancer-free LNs (left) or involved LNs (right) compared to the size of the primary tumor (pTstage 1 (n = 33), pNstage 2 (n = 116) and pNstage 3 & 4 (n = 12)). P values displayed calculated via Mann-Whitney U test; (h) Violin plots, displaying the number of GCs in cancer-free LNs (left) or involved LNs (right) compared to patients with (n = 51) and without (n = 110) lympho-vascular invasion.

Supplementary Figure 3.



Supplementary Figure 3. Cut off selection for defining the number of germinal centers in cancer-free lymph nodes. The optimal germinal center number cut off was determined by taking all patients (including those with zero GCs) and applying an iterative process using a minimal p value approach. For all three endpoints a single cut-off was identified (dashed black lines) at 2 germinal centers.

Supplementary Table 1. The distribution of total GCs in LNs excised by SLNB and ALNC. Patients are listed who had a SLNB followed by an ALNC. For each patient, the numbers of LNs and numbers of GCs in cancer-free and involved LNs are listed separately. Within cancer-free and involved LNs, the number of LNs excised by SLNB and by ALNC (called non-SLN) are shown. The number of GCs in SLN and non-SLN, as well as the percentage of GC formation given the total number of GCs observed in all cancer-free or involved LNs (referred to as % of total) are reported. The median number of LNs, GCs and percentage of GC formation is shown.

Patient ID	Cancer-free LNs									Involved LNs								
	Total LNs		SLN			non-SLN			Total LNs		SLN			non-SLN				
	Number of LNs	Number of GCs	Number of LNs	GCs		Number of LNs	GCs		Number of LNs	Number of GCs	Number of LNs	GCs		Number of LNs	GCs			
				Number	% of total		Number	% of total				Number	% of total		Number	% of total		
case 1	83787	16	142	2	101	71%	14	41	29%	2	57		2	57	N/A	0	N/A	
case 2	84658	26	24	2	12	50%	24	12	50%	1	12		1	12	N/A	0	N/A	
case 3	93074	16	7	2	6	86%	14	1	14%	1	2		1	2	N/A	0	N/A	
case 4	90419	18	159	5	124	78%	13	35	22%	1	2		1	2	N/A	0	N/A	
case 5	90507	16	6	1	6	100%	15	0	0%	1	0		1	0	N/A	0	N/A	
case 6	91212	18	6	2	5	83%	16	1	17%	1	7		1	7	N/A	0	N/A	
case 7	92028	11	12	2	8	67%	9	4	33%	2	30		2	30	N/A	0	N/A	
case 8	94096	13	7	3	4	57%	10	3	43%	2	8		2	8	N/A	0	N/A	
case 9	96285	9	5	2	4	80%	7	1	20%	3	7		3	7	N/A	0	N/A	
case 10	100631	9	6	1	5	83%	8	1	17%	1	0		1	0	N/A	0	N/A	
case 11	101812	20	61	5	47	77%	15	14	23%	1	30		1	30	N/A	0	N/A	
case 12	103272	20	45	3	29	64%	17	16	36%	6	81		3	61	75%	3	20	25%
case 13	105096	18	34	3	24	71%	15	10	29%	2	7		2	7	N/A	0	N/A	
case 14	108069	13	38	3	23	61%	10	15	39%	3	53		1	42	79%	2	11	21%
case 15	108630	20	4	2	2	50%	18	2	50%	2	17		1	14	82%	1	3	18%
case 16	108631	17	7	1	6	86%	16	1	14%	1	9		1	9	N/A	0	N/A	
case 17	103813	24	16	3	11	69%	21	5	31%	1	27		1	27	N/A	0	N/A	
case 18	107221	11	6	3	4	67%	8	2	33%	1	6		1	6	N/A	0	N/A	
case 19	81543	16	2	1	1	50%	15	1	50%	2	0		1	0	N/A	1	0	N/A
case 20	93805	11	0	1	0	N/A	10	0	N/A	2	0		1	0	N/A	1	0	N/A
case 21	108731	16	0	2	0	N/A	14	0	N/A	1	0		1	0	N/A	0	N/A	
case 22	101463	9	0	1	0	N/A	8	0	N/A	1	0		1	0	N/A	0	N/A	
case 23	106265	9	0	1	0	N/A	8	0	N/A	1	0		1	0	N/A	0	N/A	
Median		16	7	2	6	71%	14	2	29%	1	7		1	7	79%	0	3	21%

Supplementary Table 2. Univariate & Multivariate Cox regression for iDFS, dDFS and OS of all cases or sTILs subgroups (< 20%, ≥ 20%)

Supplementary Table 2a. Univariate and Multivariate Cox regression analyses for iDFS

iDFS																
Univariate	All cases						<20% sTILs			≥20% sTILs						
Clinicopathological features	Model P	HR	CI	Model P	HR	CI	Model P	HR	CI	Model P	HR	CI				
Age at diagnosis	0.123	1.02	0.99 - 1.05	0.110	1.03	0.99-1.06	0.983	1.00	0.94 - 1.07							
Tumor size																
pTstage 1	0.056	Reference		0.078	Reference		Group size too small / too few events									
pTstage 2		1.53	0.68 - 3.45		1.44	1.48 - 5.57										
pTstage 3 & 4		3.76	1.32 - 10.74		3.71	0.26-14.56										
Lymph node stage																
pNstage 1 & 2	0.005	Reference		0.154	Reference		0.008	Reference								
pNstage 3		2.52	1.38 - 4.60		1.71	0.84 - 3.46		5.84	1.69-20.21							
Lymphovascular invasion	0.194	1.54	0.78 - 3.03	0.459	1.33	0.61 - 2.92	0.407	1.33	0.34 - 5.15							
HER2 status	1.000	1.00	0.56 - 1.80	0.538	0.81	0.41 - 1.59	0.407	1.69	0.49 - 5.85							
sTILs																
20% cut off	<0.001	0.26	0.13 - 0.51													
Increments	<0.001	0.96	0.93 - 0.98													
TLS	0.002	0.25	0.09 - 0.71	0.010	0.23	0.05 - 0.94	0.355	0.50	0.11-2.37							
LN characteristics	Cancer-free LN			Involved LN			Cancer-free LN			Cancer-free LN						
Total number of GCs across all assessed LNs per patient	Model P	HR	CI	Model P	HR	CI	Model P	HR	CI	Model P	HR	CI				
Total GCs number	0.769	1.00	0.99-1.01	0.459	1.00	0.98-1.01	0.427	0.99	0.97 - 1.01	0.019	1.01	1.00 - 1.02				
Total GCs number (≤2 / >2)	<0.001	0.33	0.19-0.59	0.023	0.48	0.26-0.88	0.002	0.36	0.19 - 0.69	0.804	1.29	0.16-10.16				
Multivariate	Corrected for: Age, pTstage, pNstage, LVI, sTILs & TLS						Corrected for: Age, pTstage, pNstage, LVI & TLS									
LN characteristics	Cancer-free LN				Involved LN				Cancer-free LN				Cancer-free LN			
Across all assessed LNs per patient	Covariate P	Model P	HR	CI	Covariate P	Model P	HR	CI	Covariate P	Model P	HR	CI	Covariate P	Model P	HR	CI
Total GCs number	0.010	<0.001	1.01	1.00 - 1.02	0.362	<0.001	1.00	0.99 - 1.01	0.832	0.025	1.00	0.98-1.02	0.086	0.013	1.01	1.00-1.03
Total GCs number (≤2 / >2)	0.110	<0.001	0.58	0.30 - 1.12	0.161	<0.001	0.63	0.33 - 1.20	0.023	0.004	0.41	0.19 -0.89	0.949	0.034	0.93	0.11-7.93

Supplementary Table 2b. Univariate and Multivariate Cox regression analyses for dDFS

dDFS																
Univariate	All cases						<20% sTILs			≥20% sTILs						
Clinicopathological features	Model P	HR	CI	Model P	HR	CI	Model P	HR	CI	Model P	HR	CI				
Age at diagnosis	0.055	1.03	1.00 - 1.06	0.041	0.103	1.00-	0.949	1.00	0.93 - 1.07							
Tumor size																
pTstage 1	0.017	Reference		0.034	Reference		Group size too small / too few events									
pTstage 2		1.95	0.76 - 5.03		1.76	0.53 - 5.84										
pTstage 3 & 4		5.43	1.72 - 17.13		5.12	1.32 -19.88										
Lymph node stage																
pNstage 1 & 2	0.003	Reference		0.074	Reference		0.018	Reference								
pNstage 3		2.75	1.46 - 5.18		1.99	0.97 - 4.08		5.88	1.47-23.55							
Lymphovascular invasion	0.219	1.54	0.76 - 3.13	0.324	1.50	0.65 - 3.44	0.953	0.95	0.23 - 4.01							
HER2 status	0.953	0.98	0.53 - 1.83	0.512	0.79	0.39 - 1.60	0.437	0.44	0.43 - 6.96							
sTILs																
20% cut off	<0.001	0.22	0.10 - 0.48													
Increments	<0.001	0.96	0.93 - 0.98													
TLS	0.001	0.21	0.06 - 0.67	0.013	0.23	0.06 - 0.98	0.183	0.18	0.04 - 2.38							
LN characteristic	Cancer-free LN			Involved LN			Cancer-free LN			Cancer-free LN						
Across all assessed LNs per patient	Model P	HR	CI	Model P	HR	CI	Model P	HR	CI	Model P	HR	CI	Model P			
Total GCs number	0.618	1.00	0.99 - 1.01	0.253	0.98	0.98 - 1.01	0.483	0.99	0.97 - 1.01	0.009	1.02	1.01 - 1.03				
Total GCs number (≤2 / >2)	<0.001	0.26	0.14 - 0.48	0.038	0.25	0.25 - 0.93	<0.001	0.28	0.14 - 0.56	0.986	1.02	0.13 - 8.29				
Multivariate	Corrected for: Age, pTstage, pNstage, LVI, sTILs & TLS								Corrected for: Age, pTstage, pNstage, LVI, & TLS							
LN characteristics	Cancer-free LN				Involved LN				Cancer-free LN				Cancer-free LN			
Across all assessed LNs per patient	Covariate P	Model P	HR	CI	Covariate P	Model P	HR	CI	Covariate P	Model P	HR	CI	Covariate P	Model P	HR	CI
Total GCs number	0.002	<0.001	1.01	1.00 - 1.02	0.565	<0.001	1.00	0.99 - 1.01	0.665	0.005	1.00	0.98 - 1.03	0.044	0.007	1.02	1.00 - 1.03
Total GCs number (≤2 / >2)	0.033	<0.001	0.47	0.23 - 0.94	0.21	<0.001	0.64	0.32 - 1.28	0.009	<0.001	0.34	0.17 - 0.77	0.665	0.031	0.61	0.07 - 5.64

Supplementary Table 2c. Univariate and Multivariate Cox regression analyses for OS

OS																
Univariate	All cases						<20% sTILs			≥20% sTILs						
Clinicopathological features	Model P	HR	CI	Model P	HR	CI	Model P	HR	CI	Model P	HR	CI				
Age at diagnosis	0.019	1.04	1.01 - 1.08	0.018	1.04	1.01-1.08	0.711	1.02	0.93 - 1.12							
Tumor size																
pTstage 1	0.004	Reference		0.053	Reference		Group size too small / too few events									
pTstage 2		4.23	1.00 - 17.84		2.30	0.54 - 9.82										
pTstage 3 & 4		10.80	2.18 - 53.54		5.96	1.20 -29.69										
Lymph node stage																
pNstage 1 & 2	0.001	Reference		0.087	Reference		0.001	Reference								
pNstage 3		3.34	1.69 - 6.63		2.01	0.94 - 4.34		22.18	2.47-198.74							
Lymphovascular invasion	0.054	2.22	0.92 - 5.37	0.429	1.42	0.58 - 3.49	Group size too small / too few events									
HER2 status	0.564	1.22	0.62 - 2.40	0.980	0.99	0.47 - 2.08	0.310	2.50	0.42 - 14.96							
sTILs																
20% cut off	<0.001	0.17	0.06 - 0.43	\			\									
Increments	<0.001	0.94	0.91 - 0.98	\			\									
TLS	<0.001	0.08	0.01 - 0.59	0.005	0.13	0.02 - 0.97	Group size too small / too few events									
LN characteristics	Cancer-free LN			Involved LN			Cancer-free LN			Cancer-free LN						
Total number of GCs across	Model P	HR	CI	Model P	HR	CI	Model P	HR	CI	Model P	HR	CI				
Total GCs number	0.951	1.00	0.99-1.01	0.488	1.00	0.98 - 1.01	0.869	1.00	0.98 - 1.02	0.152	1.01	1.00 - 1.03				
Total GCs number (≤2 / >2)	<0.001	0.28	0.14 - 0.55	0.033	0.44	0.22 - 0.91	0.006	0.36	0.17 - 0.75	0.652	0.59	0.07 - 5.25				
Multivariate	Corrected for: Age, pTstage, pNstage, LVI, sTILs & TLS						Corrected for: Age, pTstage, pNstage, LVI & TLS									
LN characteristics	Cancer-free LN			Involved LN			Cancer-free LN			Cancer-free LN						
Across all assessed LNs per patient	Covariate P	Model P	HR	CI	Covariate P	Model P	HR	CI	Covariate P	Model P	HR	CI	Covariate P	Model P	HR	CI
Total GCs number	0.005	<0.001	1.02	1.00 - 1.03	0.092	<0.001	1.01	1.00 - 1.02	0.163	0.002	1.01	1.00 - 1.03	0.372	<0.001	0.96	0.96 - 1.02
Total GCs number (≤2 / >2)	0.351	<0.001	0.69	0.32 - 1.50	0.193	<0.001	0.60	0.28 - 1.29	0.106	0.001	0.48	0.20 - 1.17	Group size too small / too few events			

Supplementary Table 3. Univariate and Multivariate Cox regression analyses for iDFS, dDFS and OS of TNBC and HER2-positive subgroups
Supplementary Table 3a. Univariate and Multivariate Cox regression analyses for iDFS of TNBC and HER2-positive subgroups

	iDFS															
Univariate	TNBC						HER2									
Clinicopathological features	Model P	HR	CI	Model P	HR	CI	Model P	HR	CI	Model P	HR	CI				
Age at diagnosis	0.076	1.03	1 - 1.07	0.921	1.00	0.95 - 1.06										
Tumor size																
pTstage 1	0.260	Reference		0.206	Reference			1.66	0.38 - 7.38		4.97	0.83 - 29.83				
pTstage 2		1.47	0.55 - 3.92													
pTstage 3 & 4		3.16	0.85 - 11.8													
Lymph node stage																
pNstage 1 & 2	0.043	Reference		0.049	Reference			2.64	1.04 - 6.7							
pNstage 3		2.48	1.1 - 5.6													
Lymphovascular invasion	0.218	1.64	0.73 - 3.71	0.616	1.36	0.39 - 4.7										
sTILs																
20% cut off	<0.001	0.19	0.07 - 0.49	0.064	0.40	0.14 - 1.11										
Increments	0.002	0.96	0.93 - 0.99	0.010	0.96	0.92 - 1										
TLS	0.010	0.22	0.05 - 0.92	0.065	0.30	0.07 - 1.32										
LN characteristics	Cancer-free LN			Involved LN			Cancer-free LN			Involved LN						
	Model P	HR	CI	Model P	HR	CI	Model P	HR	CI	Model P	HR	CI				
Total GCs number	0.161	1.01	1 - 1.02	0.740	1.00	0.99 - 1.01	0.023	0.95	0.9 - 1.01	0.079	0.98	0.94 - 1.01				
Total GCs number (≤2 / >2)	<0.001	0.25	0.12 - 0.52	0.004	0.32	0.15 - 0.67	0.139	0.49	0.19 - 1.24	0.849	1.13	0.32 - 3.96				
Multivariate	Corrected for: Age, pTstage, pNstage, LVI, sTILs & TLS						Corrected for: Age, pTstage, pNstage, LVI, sTILs & TLS									
LN characteristics	Cancer-free LN			Involved LN			Cancer-free LN			Involved LN						
Across all assessed LNs per patient	Covariate P	Model P	HR	CI	Covariate P	Model P	HR	CI	Covariate P	Model P	HR	CI	Covariate P	Model P	HR	CI
Total GCs number	<0.001	<0.001	1.01	1.01 - 1.03	0.110	<0.001	1.00	1.00 - 1.02	0.127	0.046	0.94	0.87 - 1.02	0.260	0.169	0.93	0.93 - 1.02
Total GCs number (≤2 / >2)	0.017	<0.001	0.37	0.16 - 0.84	0.092	<0.001	0.50	0.22 - 1.12	0.959	0.144	0.97	0.26 - 3.59	0.713	0.261	1.27	0.35 - 4.63

Supplementary Table 3b. Univariate and Multivariate Cox regression analyses for dDFS of TNBC and HER2-positive subgroups

	dDFS															
Univariate	TNBC						HER2									
Clinicopathological features	Model P		HR		CI		Model P		HR		CI					
Age at diagnosis	0.035		1.04		1 - 1.08		0.780		1.01		0.95 - 1.07					
Tumor size			Reference						Reference							
pTstage 1	0.082		Reference				0.168		Reference							
pTstage 2			2.37		0.7 - 8.02				1.37		0.30 - 6.20					
pTstage 3 & 4			5.41		1.21 - 24.21				5.11		0.85 - 30.71					
Lymph node stage			Reference						Reference							
pNstage 1 & 2	0.021		Reference				0.060		Reference							
pNstage 3			2.90		1.26 - 6.69				2.68		0.99 - 7.21					
Lymphovascular invasion	0.404		1.42		0.62 - 3.26		0.310		2.02		0.46 - 8.90					
sTILs																
20% cut off	<0.001		0.16		0.06 - 0.47		0.051		0.35		0.11 - 1.09					
increments	0.002		0.96		0.93 - 0.99		0.012		0.95		0.91 - 1.00					
TLS	0.022		0.25		0.06 - 1.05		0.018		0.16		0.02 - 1.19					
LN characteristics	Cancer-free LN			Involved LN			Cancer-free LN			Involved LN						
	Model P		HR	CI	Model P		HR	CI	Model P		HR	CI				
Total GCs number	0.120		1.01	1.00 - 1.02	0.962		1.00	0.99 - 1.01	0.015		0.94	0.88 - 1.01	0.024	0.96	0.91 - 1.01	
Total GCs number (≤2 / >2)	<0.001		0.20	0.09 - 0.44	0.015		0.36	0.17 - 0.79	0.057		0.38	0.14 - 1.01	0.910	0.93	0.26 - 3.33	
Multivariate	Corrected for: Age, pTstage, pNstage, LVI, sTILs & TLS									Corrected for: Age, pTstage, pNstage, LVI, sTILs & TLS						
LN characteristics	Cancer-free LN				Involved LN				Cancer-free LN				Involved LN			
Across all assessed LNs per patient	Covariate P	Model P	HR	CI	Covariate P	Model P	HR	CI	Covariate P	Model P	HR	CI	Covariate P	Model P	HR	CI
Total GCs number	<0.001	<0.001	1.02	1.01 - 1.03	0.429	<0.001	1.01	0.99 - 1.02	0.200	0.011	0.96	0.90 - 1.02	0.089	0.007	0.95	0.90 - 1.01
Total GCs number (≤2 / >2)	0.004	<0.001	0.29	0.13 - 0.67	0.034	<0.001	0.43	0.20 - 0.94	0.375	0.037	0.60	0.2 - 1.84	0.970	0.069	0.98	0.27 - 3.57

Supplementary Table 3c. Univariate and Multivariate Cox regression analyses for OS of TNBC and HER2-positive subgroups

	OS															
Univariate	TNBC						HER2									
Clinicopathological features	Model P	HR	CI	Model P	HR	CI	Model P	HR	CI	Model P	HR	CI				
Age at diagnosis	0.012	1.06	1.01- 1.11	0.714	1.01	0.95 - 1.07										
Tumor size																
pTstage 1	0.040	Reference		0.095	Reference											
pTstage 2		5.50	0.73 - 41.63		2.91	1.01 - 22.56										
pTstage 3 & 4		11.39	1.18 - 109.58		9.74	0.38 - 93.94										
Lymph node stage																
pNstage 1 & 2	0.009	Reference		0.052	Reference											
pNstage 3		3.89	1.53 - 9.89		2.84	1.03 - 7.85										
Lymphovascular invasion	0.267	1.74	0.63 - 4.84	0.086	4.22	0.55 - 32.1										
sTILs																
20% cut off	<0.001	0.11	0.03 - 0.47	0.019	0.26	0.07 - 0.91										
increments	0.002	0.95	0.9 - 0.99	0.004	0.94	0.89 - 0.99										
TLS	Group size too small / too few events						0.026	0.17	0.02 - 1.28							
LN characteristics	Cancer-free LN			Involved LN			Cancer-free LN			Involved LN						
Total number of GCs across all assessed LNs per patient	Model P	HR	CI	Model P	HR	CI	Model P	HR	CI	Model P	HR	CI				
Total GCs number	0.301	1.01	1.00 - 1.02	0.565	1.00	0.99 - 1.02	0.019	0.94	0.88 - 1.01	0.027	0.96	0.91 - 1.01				
Total GCs number (≤2 / >2)	0.004	0.24	0.10 - 0.60	0.013	0.31	0.12 - 0.75	0.036	0.33	0.12 - 0.92	0.848	0.88	0.24 - 3.20				
Multivariate	Corrected for: Age, pTstage, pNstage, LVI, sTILs & TLS						Corrected for: Age, pTstage, pNstage, LVI, sTILs & TLS									
LN characteristics	Cancer-free LN			Involved LN			Cancer-free LN			Involved LN						
Across all assessed LNs per patient	Covariate P	Model P	HR	CI	Covariate P	Model P	HR	CI	Covariate P	Model P	HR	CI	Covariate P	Model P	HR	CI
Total GCs number	0.002	<0.001	1.02	1.01 - 1.03	0.080	<0.001	1.01	1.00 - 1.03	0.401	0.015	0.96	0.88 - 1.05	0.236	0.058	0.96	0.91 - 1.02
Total GCs number (≤2 / >2)	0.119	<0.001	0.46	0.17 - 1.22	0.077	<0.001	0.40	0.15 - 1.10	0.851	0.021	1.14	0.28 - 4.72	0.751	0.102	1.24	0.33 - 4.71

Supplementary Table 4. Multivariate Cox regression analyses for iDFS, dDFS and OS comparing the prognostic value of the proportion of LNs with GCs and the ratio of GCs in LNs

Multivariate analysis									
corrected for Age, pTstage, pNstage, LVI & TLS									
Covariate	<20% sTILs				≥20% sTILs				
	Covariate P value	Model P values	HR	CI	Covariate P value	Model P values	HR	CI	
iDFS									
Proportion of LNs with GC (Involved and cancer-free LNs)	0.236	0.015	0.20	0.01 - 2.88	0.058	0.010	33.34	0.89 - 1255.32	
Proportion of LNs with GC (cancer-free LNs)	0.607	0.023	0.54	0.05 - 5.58	0.037	0.007	14.92	1.18 - 187.97	
Proportion of LNs with GC (Involved LNs)	0.136	0.021	0.47	0.17 - 1.27	0.490	0.039	0.44	0.04 - 4.55	
Total GCs / Total LNs (Involved and cancer-free)	0.938	0.026	0.99	0.73 - 1.33	0.069	0.012	1.20	0.99 - 1.46	
Total GCs / Total LNs (cancer-free)	0.823	0.025	0.96	0.64 - 1.42	0.009	0.004	1.37	1.08 - 1.73	
Total GCs / Total LNs (Involved)	0.250	0.026	0.95	0.87 - 1.04	0.603	0.041	0.98	0.93 - 1.04	
dDFS									
Proportion of LNs with GC (Involved and cancer-free LNs)	0.129	0.002	0.10	0.01 - 1.94	0.040	0.007	66.23	1.22 - 3602.85	
Proportion of LNs with GC (cancer-free LNs)	0.542	0.004	0.46	0.04 - 5.49	0.024	0.004	32.03	1.58 - 650.92	
Proportion of LNs with GC (Involved LNs)	0.095	0.004	0.40	0.13 - 1.17	0.844	0.040	0.77	0.05 - 10.95	
Total GCs / Total LNs (Involved and cancer-free)	0.585	0.004	0.90	0.62 - 1.31	0.068	0.012	1.20	0.99 - 1.46	
Total GCs / Total LNs (cancer-free)	0.890	0.005	0.97	0.64 - 1.47	0.025	0.006	1.33	1.04 - 1.70	
Total GCs / Total LNs (Involved)	0.034	0.001	0.87	0.76 - 0.99	0.143	0.011	0.85	0.69 - 1.06	
OS									
Proportion of LNs with GC (Involved and cancer-free LNs)	0.765	0.003	0.63	0.03 - 13.42	0.443	<0.001	0.05	0 - 116.27	
Proportion of LNs with GC (cancer-free LNs)	0.470	0.003	2.51	0.21 - 30.25	0.521	<0.001	0.19	0 - 30.14	
Proportion of LNs with GC (Involved LNs)	0.154	0.005	0.42	0.13 - 1.39	0.541	<0.001	0.25	0 - 20.97	
Total GCs / Total LNs (Involved and cancer-free)	0.602	0.003	1.10	0.78 - 1.55	0.431	<0.001	0.80	0.46 - 1.39	
Total GCs / Total LNs (cancer-free)	0.305	0.002	1.20	0.85 - 1.70	0.424	<0.001	0.80	0.46 - 1.39	
Total GCs / Total LNs (Involved)	0.066	0.002	0.88	0.76 - 1.01	0.677	<0.001	0.93	0.65 - 1.32	

Multivariate analysis									
corrected for Age, pTstage, pNstage, LVI, TLS & sTILs									
Covariate	TNBC				HER2				
	Covariate P value	Model P values	HR	CI	Covariate P value	Model P values	HR	CI	
iDFS									
Proportion of LNs with GC (Involved and cancer-free LNs)	0.178	0.001	4.41	0.51 - 38.29	0.547	0.129	0.37	0.01 - 9.5	
Proportion of LNs with GC (cancer-free LNs)	0.055	<0.001	5.77	0.96 - 34.56	0.734	0.139	0.57	0.02 - 14.08	
Proportion of LNs with GC (Involved LNs)	0.212	0.001	0.50	0.17 - 1.48	0.826	0.268	1.23	0.2 - 7.55	
Total GCs / Total LNs (Involved and cancer-free)	0.002	<0.001	1.25	1.08 - 1.45	0.277	0.092	0.76	0.46 - 1.25	
Total GCs / Total LNs (cancer-free)	<0.001	<0.001	1.41	1.17 - 1.7	0.699	0.137	0.91	0.57 - 1.46	
Total GCs / Total LNs (Involved)	0.692	0.001	0.98	0.91 - 1.07	0.719	0.261	0.99	0.94 - 1.04	
dDFS									
Proportion of LNs with GC (Involved and cancer-free LNs)	0.124	<0.001	5.99	0.61 - 58.74	0.154	0.029	0.07	0 - 2.74	
Proportion of LNs with GC (cancer-free LNs)	0.030	<0.001	8.08	1.23 - 53.1	0.588	0.054	0.38	0.01 - 12.86	
Proportion of LNs with GC (Involved LNs)	0.356	<0.001	0.58	0.19 - 1.83	0.549	0.156	0.55	0.08 - 3.88	
Total GCs / Total LNs (Involved and cancer-free)	0.003	<0.001	1.27	1.08 - 1.49	0.073	0.015	0.52	0.25 - 1.06	
Total GCs / Total LNs (cancer-free)	<0.001	<0.001	1.46	1.19 - 1.78	0.124	0.021	0.48	0.19 - 1.23	
Total GCs / Total LNs (Involved)	0.186	<0.001	0.91	0.8 - 1.04	0.228	0.078	0.92	0.8 - 1.05	
OS									
Proportion of LNs with GC (Involved and cancer-free LNs)	0.109	6.80E-06	9.83	0.6 - 161.44	0.530	0.02	0.30	0.01 - 13.32	
Proportion of LNs with GC (cancer-free LNs)	0.023	2.51E-06	14.40	1.45 - 142.92	0.747	0.02	1.87	0.04 - 82.66	
Proportion of LNs with GC (Involved LNs)	0.286	1.35E-05	0.49	0.13 - 1.82	0.604	0.10	0.58	0.08 - 4.47	
Total GCs / Total LNs (Involved and cancer-free)	0.020	2.29E-06	1.29	1.04 - 1.59	0.298	0.01	0.71	0.37 - 1.36	
Total GCs / Total LNs (cancer-free)	0.004	1.18E-06	1.44	1.12 - 1.85	0.454	0.02	0.73	0.33 - 1.65	
Total GCs / Total LNs (Involved)	0.490	1.81E-05	0.95	0.81 - 1.1	0.302	0.06	0.93	0.82 - 1.06	