

Online Supplement**Supplemental Table I****Lesion water uptake in follow-up CT****Univariable linear regression**

Parameter	Coefficient	SD	p value
Vessel recanalization (TICI \geq 2b)	-7.3%	1.51	<0.001
Collateral Score (1-point increase)	-2.9%	1.13	0.01
ASPECTS (1-point increase)	-0.5%	0.38	0.19

Multivariable linear regression*

Vessel recanalization (TICI \geq 2b)	-6.6%	1.54	<0.001
Collateral Score (1-point increase)	-1.8%	1.04	0.08

*adjusted for ASPECTS

Total lesion volume in follow-up CT**Univariable linear regression**

Parameter	Coefficient	SD	p value
Vessel recanalization (TICI \geq 2b)	-74 mL	19.0	<0.001
Collateral Score (1-point increase)	-38 mL	12.4	0.003
ASPECTS (1-point increase)	-20 mL	3.8	<0.001
Age (1 year increase)	-1.8 mL	0.73	0.01

Multivariable linear regression*

Vessel recanalization (TICI \geq 2b)	-48 mL	19.4	0.01
ASPECTS (1-point increase)	-14 mL	4.1	<0.001
Age (1 year increase)	-1.6 mL	0.7	0.02

*adjusted for collateral status

Clinical outcome**Univariable logistic regression (mRS 0-2)**

Parameter	OR	95%CI	p value
Age	0.96	0.93 – 0.99	0.02
NIHSS	0.77	0.67 – 0.88	<0.001
ASPECTS	1.69	1.31 – 2.17	<0.001
Mechanical thrombectomy	1.46	0.56 – 3.85	0.44
Recanalization status TIC1 \geq 2b	15.0	1.95 – 116.2	0.009
Early lesion water uptake	0.76	0.66 – 0.87	<0.001
IV lysis	5.52	1.76 – 17.3	0.003
Collateral Score	4.42	2.03 – 9.59	<0.001

Multivariable logistic regression (mRS 0-2) *

Parameter	OR	95%CI	p value
Age	0.92	0.87 – 0.01	0.01
NIHSS	0.75	0.62 – 0.92	0.005
ASPECTS	1.79	1.20 – 2.69	0.04
Collateral Score	3.08	1.04 – 9.11	0.04
Early lesion water uptake	0.75	0.61 – 0.91	0.003

*adjusted for recanalization status and application of intravenous lysis

Multivariable linear regression mRS, successful recanalization (n=87)

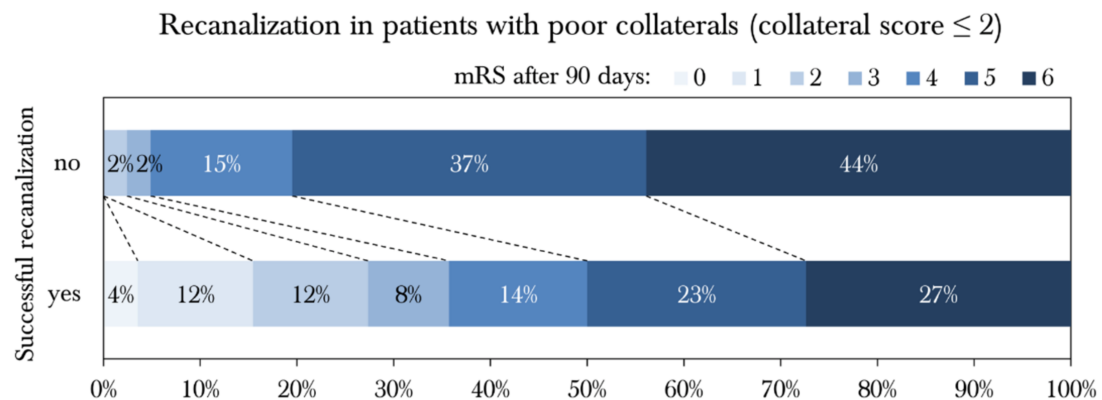
Parameter	Coefficient	SD	p value
(Constant)	0.26	1.09	0.82
Age	0.05	0.01	0.00
NIHSS	0.08	0.03	0.01
ASPECTS	-0.26	0.08	0.00
Collateral Score	-0.41	0.21	0.05
NWU_ADM	9.75	2.77	0.00
iv_rtPA	-0.75	0.31	0.02

Multivariable linear regression mRS, no recanalization (n=42)

Parameter	Coefficient	SD	p value
(Constant)	2.89	1.51	0.06
NIHSS	-0.07	0.23	0.76
Collateral Score	-0.01	0.08	0.90

* adjusted for recanalization Early lesion water uptake, ASPECTS, Age
and application of intravenous lysis

Supplemental Figure I- Clinical outcome in patients with poor collaterals and successful endovascular recanalization versus persistent vessel occlusion



Bar graphs to display the impact of successful recanalization on clinical outcome indicated by modified Ranking scale scores at 90 days.