

Figure S1. Representative flow cytometry dot plots of splenic (A) CD4⁺ T lymphocytes and CD8⁺ T lymphocytes, (B) CD4⁺ PD1⁺ T lymphocytes, (C) CD8⁺ PD1⁺ T lymphocytes, (D) CD11b⁺F4/80⁺ macrophages, (E) CD11c⁺MHCII⁺ dendritic cells, (F) CD3⁺NK1.1⁺ natural killer cells and CD3⁺NK1.1⁺ natural killer T cells. F4/80, adhesion G protein-coupled receptor E1; MHC, major histocompatibility complex; NK1.1, natural killer 1.1; PD1, programmed cell death protein 1; SSC, side scatter.

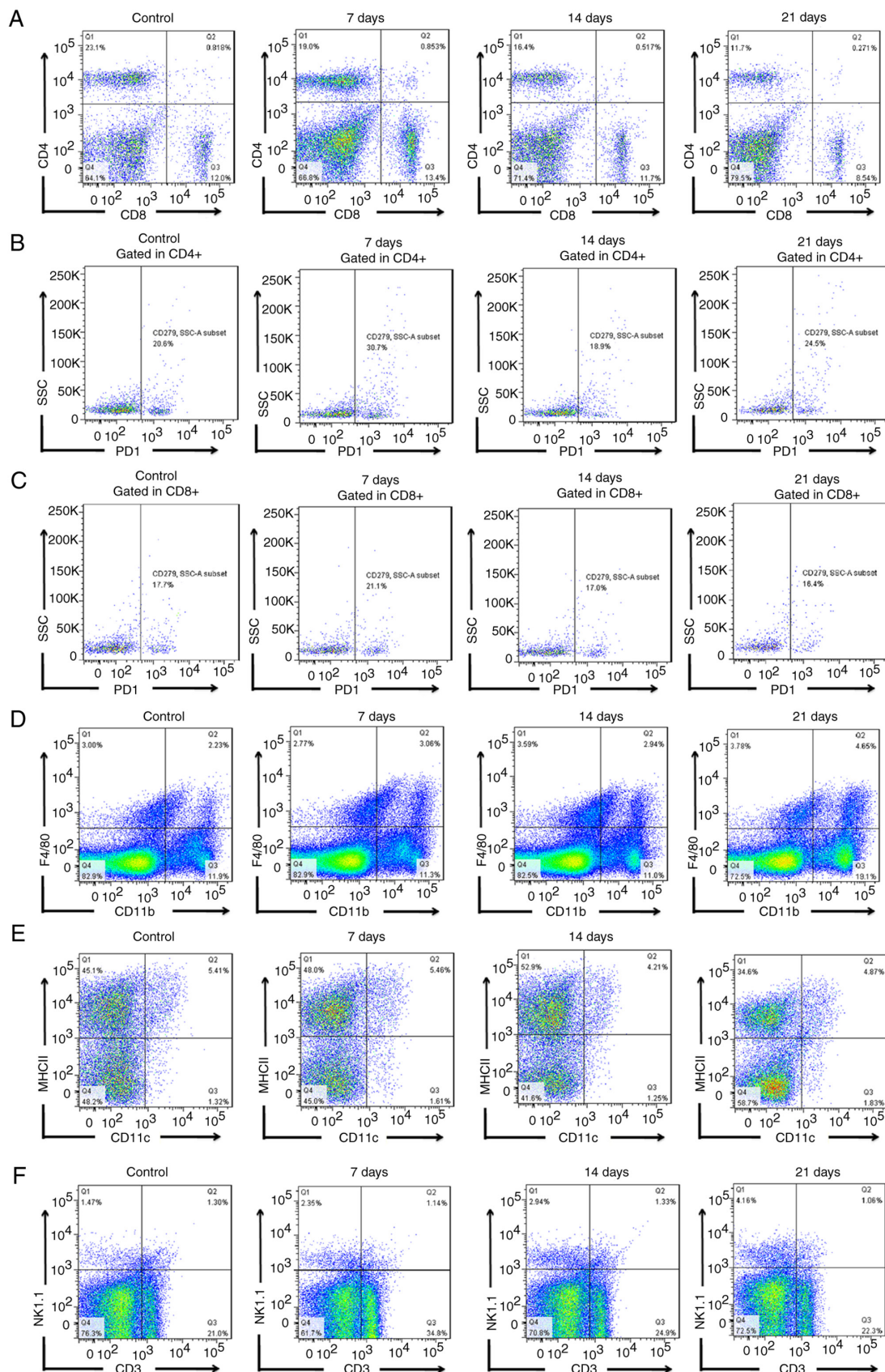


Figure S2. Representative flow cytometry dot plots of blood (A) CD4⁺ PD1⁺ T lymphocytes, (B) CD8⁺ PD1⁺ T lymphocytes, (C) myeloid-derived suppressor cells (among total cells), (D) CD11c⁺MHCII⁺ dendritic cells, CD3⁺NK1.1⁺ natural killer and (E) CD3⁺NK1.1⁺ natural killer T cells. Ly6, lymphocyte antigen 6; MHC, major histocompatibility complex; NK1.1, natural killer 1.1; PD1, programmed cell death protein 1; SSC, side scatter; SSC-A, SSC area.

