

Figure S1. Roles of CNN3 in the diagnosis and prognosis of NSCLC. (A) Role of CNN3 in the diagnosis of NSCLC as analyzed using the GSE2514 and GSE10072 datasets from the GEO database and the LUAD and LUSC data from TCGA and the GTEx database. (B) Role of CNN3 in the prognosis of NSCLC as analyzed using data from the GSE72094, GSE41271 and GSE31210 datasets from the GEO database. AUC, area under the curve; CNN3, calponin 3; GEO, Gene Expression Omnibus; GTEx, Genotype Tissue Expression; LUAD, lung adenocarcinoma; LUSC, lung squamous cell carcinoma; NSCLC, non-small cell lung cancer; AUC, area under the curve; TCGA, The Cancer Genome Atlas.

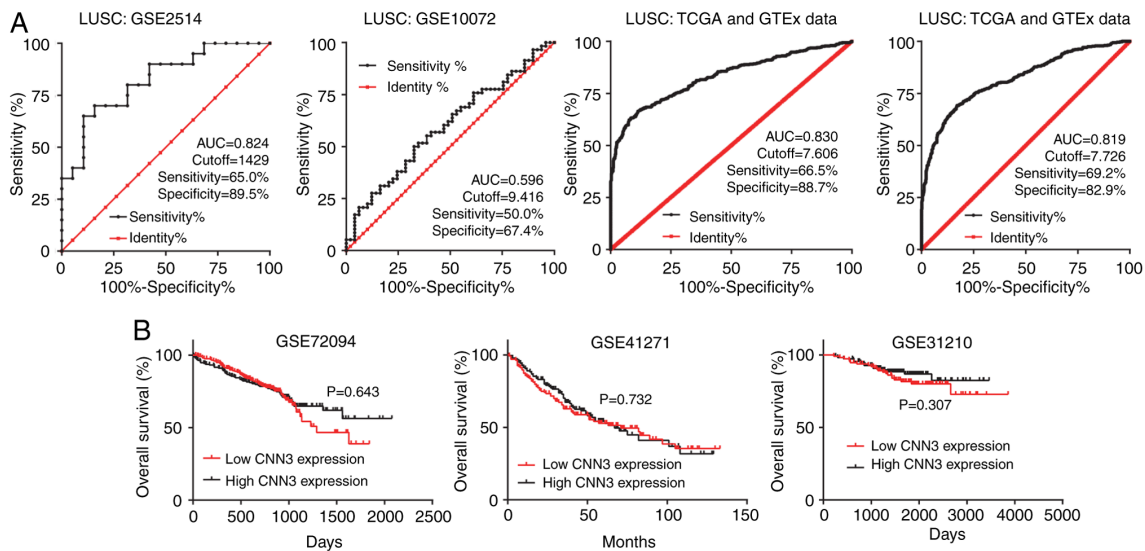


Figure S2. CNN3 mRNA expression in the NCI-H1975, PC9 and NCI-H520 non-small cell lung cancer cell lines was significantly lower than that in the BEAS-2B normal epithelial cells. CNN3 mRNA expression was measured by reverse transcription-quantitative PCR. ***P<0.001. CNN3, calponin 3.

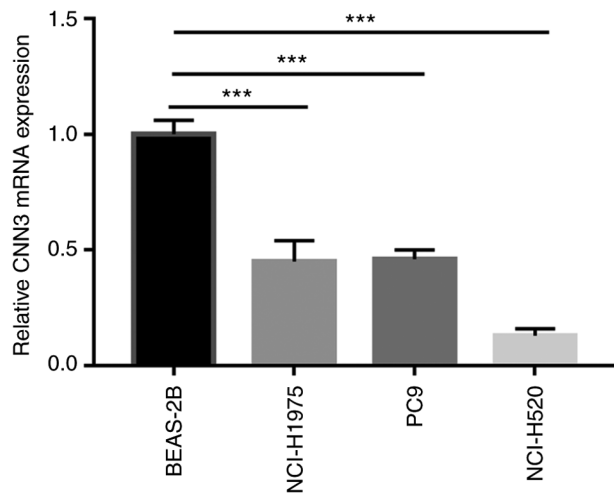


Figure S3. CNN3 overexpression inhibits the proliferation of NCI-H1975 and NCI-H520 cells. CNN3 mRNA and protein expression in the cells was measured by (A) reverse transcription-quantitative PCR and (B) western blotting, respectively. Effects of CNN3 overexpression on (C) NCI-H1975 and (D) NCI-H520 cell proliferation were measured using an MTS assay. * $P < 0.05$, ** $P < 0.01$ and *** $P < 0.001$. CNN3, calponin 3; NC, empty vector pcDNA 3.1; OD, optical density.

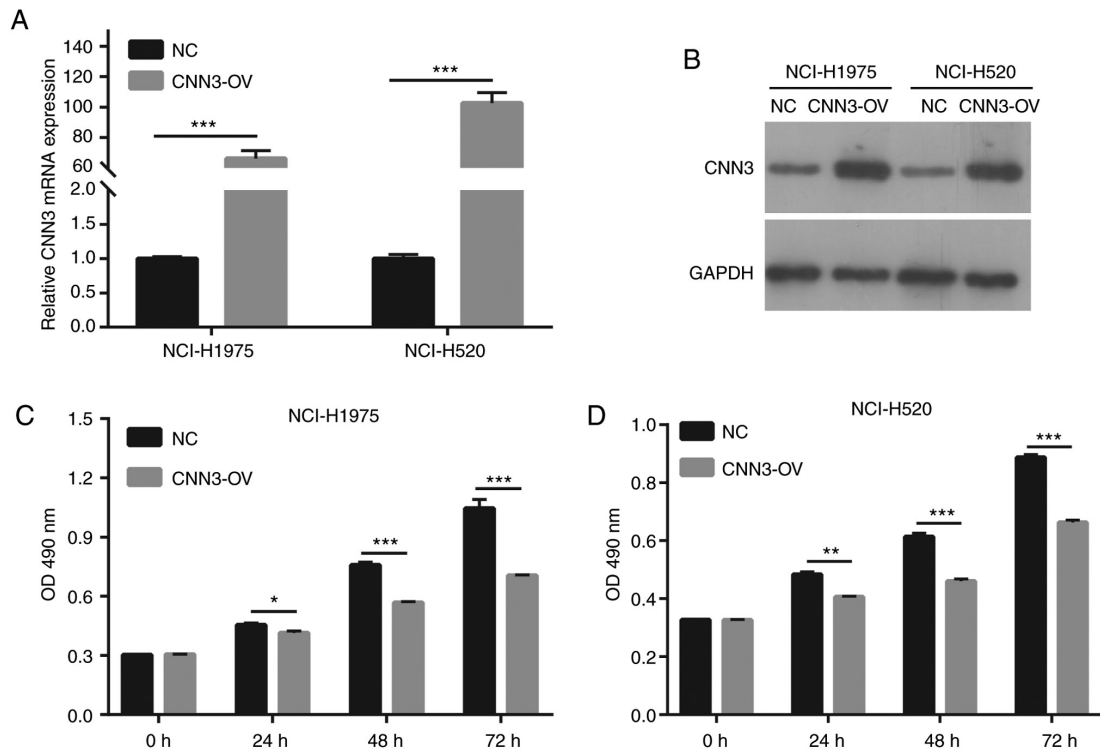


Table SI. Basic clinical information of all the patients in the GSE2514 and GSE10072 datasets.

Variable group	Dataset			
	GSE2514		GSE10072	
	Adjacent tissue	Cancer tissue	Normal tissue	Cancer tissue
Disease		Pulmonary adenocarcinoma		Pulmonary adenocarcinoma
Number	19	20	58	49
Mean age at diagnosis, years	No record	No record	66.4±7.9	65.6±7.7
Sex, n				
Male	No record	No record	35	34
Female	No record	No record	23	15
Tobacco history, n	No record	No record	42	34
Stage, n				
I+II	No record	No record	43	37
III+IV	No record	No record	15	12

Table SII. Basic clinical information of all the patients in the GSE72094, GSE41271 and GSE31210 datasets.

Variable	Dataset		
	GSE72094	GSE41271	GSE31210
Disease	Lung adenocarcinoma	NSCLC	Lung adenocarcinoma
Number	398	275	226
Mean age at diagnosis years	69.3±9.5		59.6±7.4
Sex, n			
Male	176	148	105
Female	222	127	121
Tobacco history, n	300	247	111
Stage, n			
I+II	321	183	226
III+IV	72	92	0
Survival status, n			
Alive	285	151	191
Dead	113	124	35
Survival time	791.9±402.7 days	44.0±31.3 months	1722.9±689.4 days

NSCLC, non-small cell lung cancer.