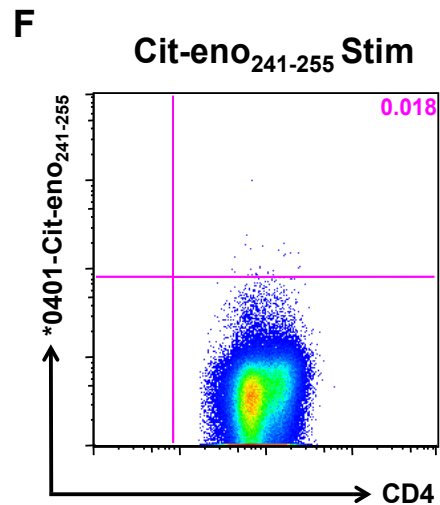
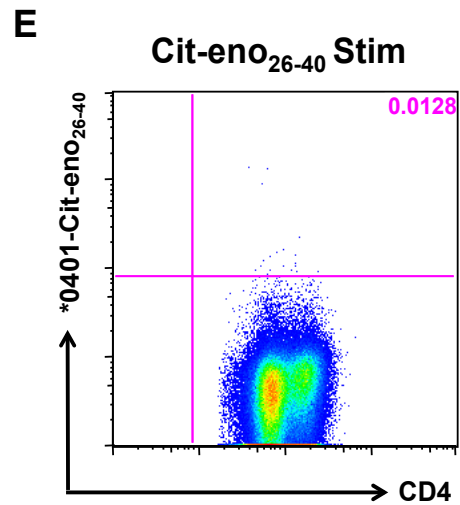
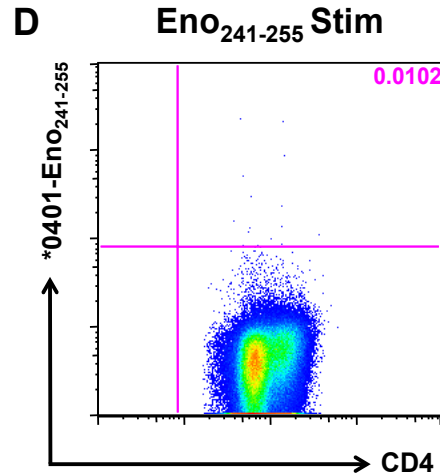
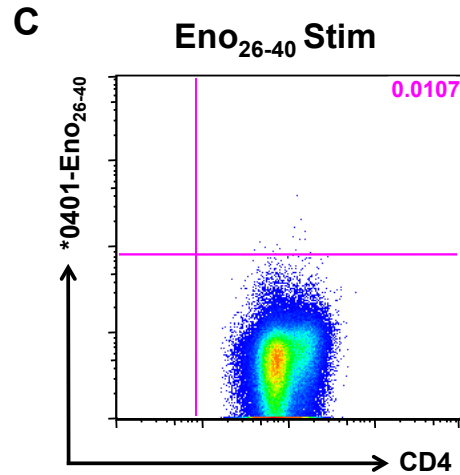


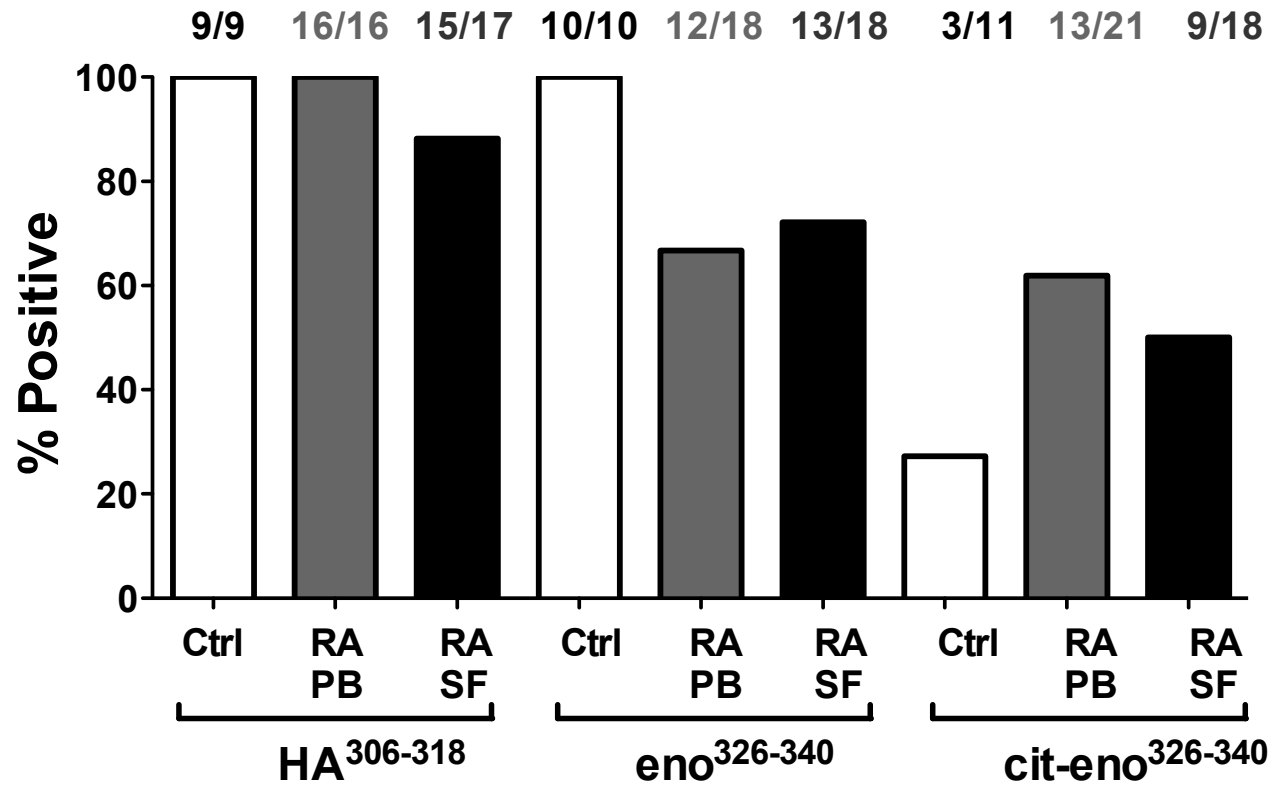
Supplementary Figure S1: Other enolase peptides tested

A	Position	P	1	4	6	7	9
	eno ₂₆₋₄₀	TSKG	<u>L</u> FRAAVPSG	AS			
	cit-eno ₂₆₋₄₀	TSKG	<u>L</u> FXAAVPSG	AS			

B	Position	P	1	4	6	7	9
	eno ₂₄₁₋₂₅₅	VIG	MDVAASEFF	<u>R</u> SG			
	cit-eno ₂₄₁₋₂₅₅	VIG	MDVAASEFF	<u>X</u> SG			



Supplementary Figure S2: Patients tested in ex vivo stainings.



Supplementary table 1: patient characteristics

Type	Nr	Age at draw	Range	CCP2+ (%)	Female (%)
Controls	15	44	22- 82	0	8 (53%)
RA patients	39	51	22- 78	33 (84%)	28 (71%)

Supplementary table 2

Supplementary Table 1: FACS panels. (Biol=Biolegend)

Panel	Machine	FITC	PE	PerCP Cy5.5	Pe Cy7	APC	Alexa Fluor 647	eFluor650 NC	Alexa 700	APC Cy7/H7	BV421/ Pacific Blue	V500
In vitro BRI	BD Calibur	CD25 (BD)	Tmr	CD4 (Biol)		Annexin V (BD) CD14 (BD) CD19 (BD)						
In vitro KI	Gallios (Beckman Coulter) Or BD Influx	Annexin V (BD) CD14 (BD) CD19 (BD)	Tmr	CD25 (Biol)		(Tmr)						CD4 (BD)
Ex vivo BRI	LSR II (BD)	Annexin V (BD) CD14 (Biol) CD19 (Biol)	Tmr	CCR6 (BD)	CD28 (Biol)	CD25 (BD)		CD45RO (eBioscience)	CCR7 (BD)		CXCR3 (Biol)	CD4 (BD)
Ex vivo KI	Gallios	Annexin V (BD) CD14 (BD) CD19 (BD)	Tmr	CD25 (Biol)	CD62L (Biol)	(Tmr)			CD28 (Biol)	CD45RO (Biol)		CD4 (BD)
ICS KI	Cyan	CD14 (BD)	CD40L (BD)	TNF (Biol)	IFNg (Biol)		IL-17A (Biol)			CD4 (BD)	CD3 (Biol)	