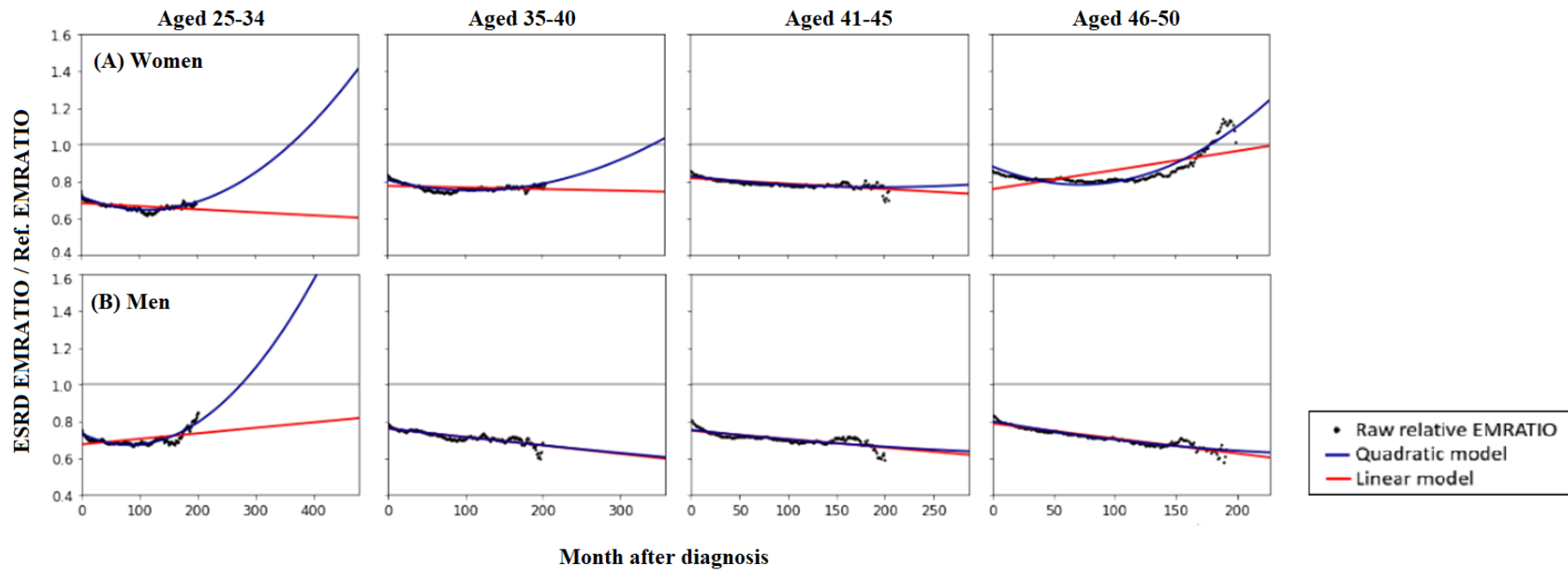


Supplemental Material:

Supplemental Figure 1. Predicted index group's employment to population ratio (EMRATIO) compared to the general population group's EMRATIO trend in (A) women and (B) men.

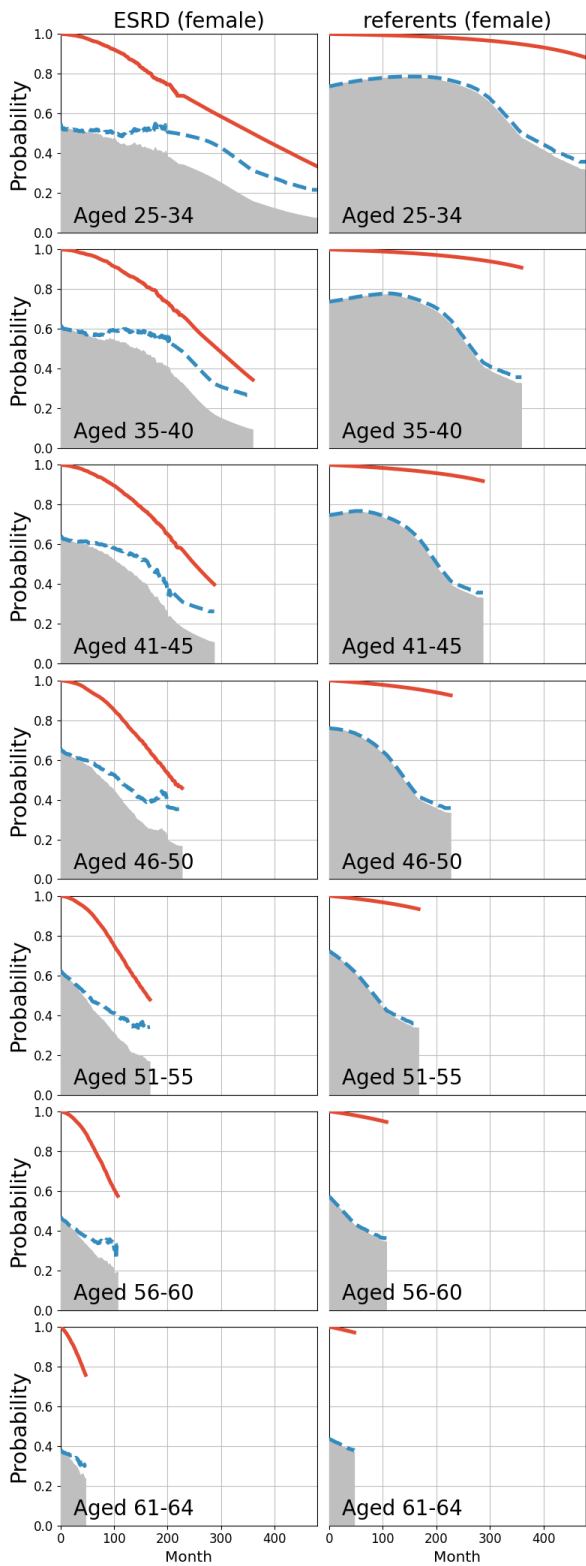
Supplemental Figure 2. Expected lifetime employment duration (shadowed areas) of female (2A) and male (2B) patients with kidney failure and those of the corresponding age-, sex-, and calendar-year-matched general population (referents), stratified by age.

Supplemental Figure 1. Predicted index group's employment to population ratio (EMRATIO) compared to the general population group's EMRATIO trend in (A) women and (B) men.



Supplemental Figure 2. Expected lifetime employment duration (shadowed areas) of female (2A) and male (2B) patients with kidney failure and those of the corresponding age-, sex-, and calendar-year-matched general population (referents), stratified by age. Red lines indicate the survival curves, and the dashed blue lines indicate the employment ratios of the corresponding population, which are estimated by the linear model.

(2A) Female cohorts.



(2B) Male cohorts.

