

Supplemental Material

Supplementary Table 1. Weekly rates of COVID-19 hospitalization during epidemiologic weeks 8-27 of 2020, by five-week intervals, among dialysis patients with Medicare coverage.

Supplementary Table 2. Weekly rates of death during epidemiologic weeks 3-27 of 2017-2020 among all ESKD patients undergoing dialysis.

Supplementary Table 3. Weekly rates of death during epidemiologic weeks 3-27 of 2017-2020 among all ESKD patients with a functioning transplant.

Supplementary Table 4. Weekly rates of non-COVID-19 hospitalization during epidemiologic weeks 3-27 of 2017-2020 among dialysis patients with Medicare coverage.

Supplementary Figure 1. Per-interval relative rates of death during epidemiologic weeks 13-27 of 2020 versus 2017-2019 among all ESKD patients undergoing dialysis and per-interval ratios of observed versus expected deaths in the general population, stratified by state.

Supplementary Figure 2. Relative rates of death during epidemiologic weeks 13-27 of 2020 versus 2017-2019 among all ESKD patients with a functioning transplant and ratios of observed versus expected deaths in the general population, by state.

Supplementary Table 1. Weekly rates of COVID-19 hospitalization during epidemiologic weeks 8-27 of 2020, by five-week intervals, among dialysis patients with Medicare coverage.

	Weeks 8-12	Weeks 13-17	Weeks 18-22	Weeks 23-27
All patients	0.21	3.33	2.21	1.77
Age (years)				
18-44	0.15	1.62	1.24	1.57
45-64	0.19	2.84	1.98	1.88
65-74	0.21	3.86	2.54	1.80
75+	0.26	4.39	2.67	1.63
Race/ethnicity				
Non-Hispanic White	0.11	2.33	1.68	1.10
Non-Hispanic Black	0.33	4.65	2.81	1.86
Hispanic	0.18	3.44	2.51	3.59
Asian	0.31	3.45	1.48	0.94
Other/unknown	0.12	2.33	2.35	2.09
Sex				
Female	0.20	3.31	2.34	1.95
Male	0.21	3.35	2.11	1.63
Dialysis modality				
Hemodialysis	0.22	3.59	2.38	1.90
Peritoneal dialysis	0.10	0.98	0.68	0.62

Note: Rate statistics indicate hospitalizations per 1000 patients per week.

Supplementary Table 2. Weekly rates of death during epidemiologic weeks 3-27 of 2017-2020 among all ESKD patients undergoing dialysis.

	Weeks 3-7		Weeks 8-12		Weeks 13-17		Weeks 18-22		Weeks 23-27	
	2017-2019	2020	2017-2019	2020	2017-2019	2020	2017-2019	2020	2017-2019	2020
All patients	3.25	3.17	3.07	3.13	2.93	3.85	2.77	3.24	2.69	3.00
Age (years)										
18-44	1.05	1.14	1.02	1.11	1.01	1.38	0.95	1.18	0.93	1.07
45-64	2.19	2.19	2.10	2.14	1.99	2.81	1.92	2.26	1.85	2.12
65-74	3.79	3.64	3.55	3.60	3.38	4.32	3.25	3.73	3.14	3.44
≥75	5.92	5.51	5.54	5.46	5.30	6.50	4.90	5.56	4.76	5.14
Race/ethnicity										
Non-Hispanic White	4.45	4.34	4.18	4.23	3.99	4.52	3.74	4.07	3.65	3.88
Non-Hispanic Black	2.51	2.51	2.41	2.61	2.35	3.78	2.20	2.92	2.15	2.63
Hispanic	2.32	2.39	2.17	2.16	2.03	2.91	1.97	2.42	1.90	2.36
Asian	2.47	2.42	2.33	2.60	2.16	3.50	1.97	2.61	1.88	1.83
Other/unknown	2.95	2.23	2.75	2.31	2.55	3.02	2.68	2.65	2.42	2.34
Sex										
Female	3.30	3.25	3.13	3.17	2.99	3.78	2.85	3.30	2.74	3.09
Male	3.21	3.12	3.02	3.10	2.88	3.89	2.71	3.19	2.65	2.94

Note: Rate statistics indicate deaths per 1000 patients per week.

Supplementary Table 3. Weekly rates of death during epidemiologic weeks 3-27 of 2017-2020 among all ESKD patients with a functioning transplant.

	Weeks 3-7		Weeks 8-12		Weeks 13-17		Weeks 18-22		Weeks 23-27	
	2017-2019	2020	2017-2019	2020	2017-2019	2020	2017-2019	2020	2017-2019	2020
All patients	0.61	0.64	0.62	0.60	0.61	0.93	0.56	0.71	0.54	0.64
Age (years)										
18-44	0.13	0.15	0.13	0.10	0.16	0.23	0.12	0.16	0.13	0.15
45-64	0.45	0.44	0.45	0.42	0.42	0.68	0.38	0.49	0.37	0.44
65-74	1.03	0.97	1.04	0.91	0.99	1.44	0.94	1.14	0.86	1.03
≥75	1.96	2.15	1.97	2.10	2.07	2.82	1.91	2.28	1.90	1.98
Race										
Non-Hispanic White	0.62	0.69	0.62	0.69	0.62	0.86	0.60	0.71	0.55	0.62
Non-Hispanic Black	0.55	0.59	0.55	0.56	0.56	1.29	0.46	0.80	0.47	0.73
Hispanic	0.38	0.57	0.39	0.47	0.39	0.85	0.35	0.66	0.37	0.67
Asian	0.29	0.41	0.36	0.41	0.42	0.51	0.30	0.47	0.41	0.62
Other/unknown	1.04	0.66	1.10	0.52	0.96	0.85	0.90	0.74	0.84	0.56
Sex										
Female	0.56	0.58	0.57	0.55	0.55	0.83	0.55	0.62	0.52	0.61
Male	0.65	0.68	0.66	0.63	0.64	0.99	0.57	0.77	0.55	0.66

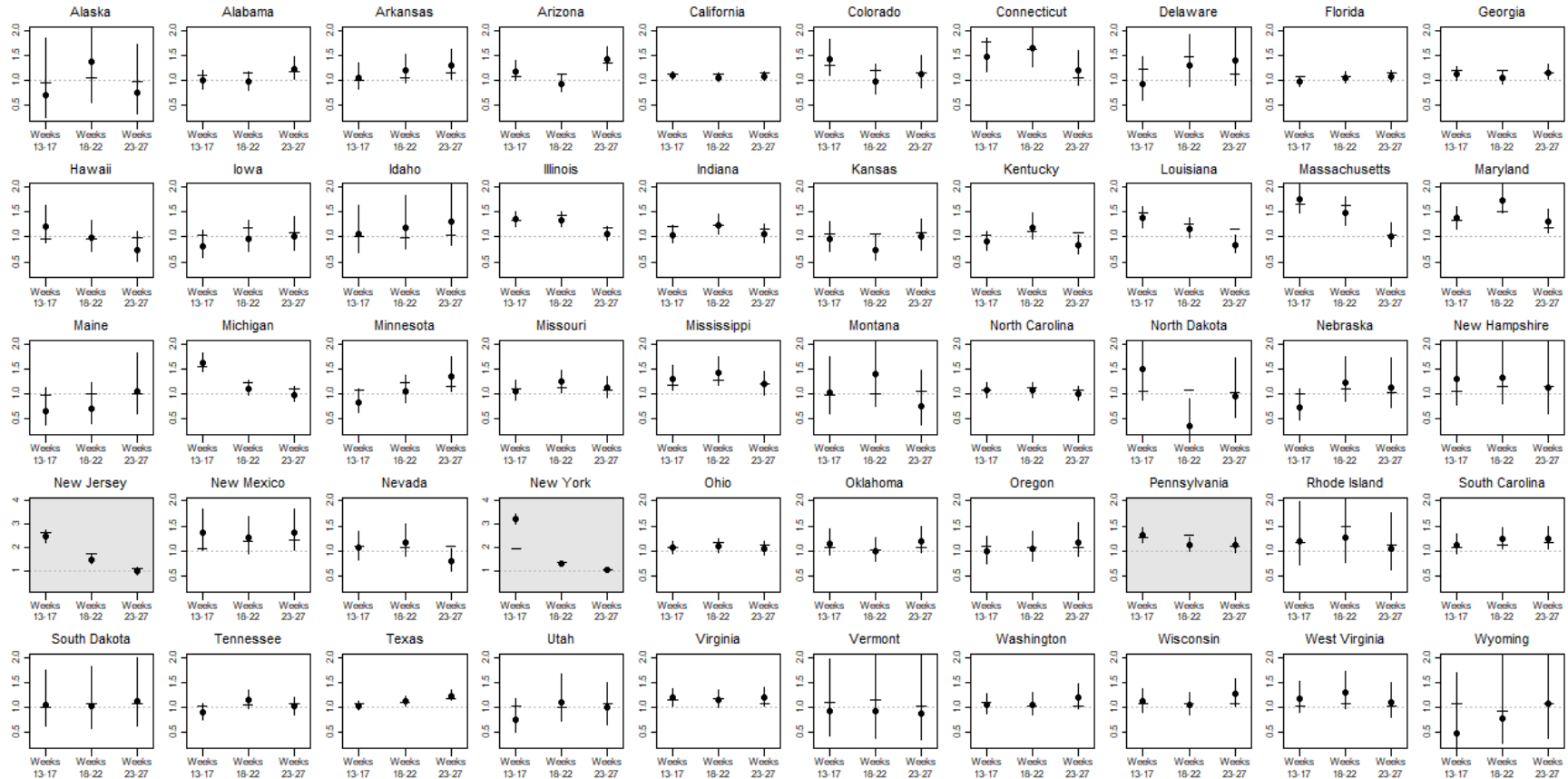
Note: Rate statistics indicate deaths per 1000 patients per week.

Supplementary Table 4. Weekly rates of non-COVID-19 hospitalization during epidemiologic weeks 3-27 of 2017-2020 among dialysis patients with Medicare coverage.

	Weeks 3-7		Weeks 8-12		Weeks 13-17		Weeks 18-22		Weeks 23-27	
	2017-2019	2020	2017-2019	2020	2017-2019	2020	2017-2019	2020	2017-2019	2020
All patients	34.7	34.3	33.8	32.3	32.8	21.9	32.2	25.2	31.9	27.2
Age (years)										
18-44	35.5	37.0	35.1	34.1	34.4	24.3	34.4	27.5	34.4	30.9
45-64	33.4	33.0	32.6	31.3	31.5	21.5	31.3	24.8	31.0	26.9
65-74	35.2	34.4	34.3	32.8	33.4	22.1	32.5	25.7	32.0	27.1
≥75	36.0	35.0	34.7	32.7	33.5	21.2	32.4	23.9	32.0	26.2
Race/ethnicity										
Non-Hispanic White	37.6	36.6	36.3	34.6	35.3	23.5	34.5	27.5	34.0	29.6
Non-Hispanic Black	34.1	34.2	33.3	32.2	32.5	22.1	32.2	25.0	31.9	27.6
Hispanic	31.8	31.8	31.0	29.9	30.0	19.6	29.3	22.2	29.3	23.6
Asian	24.8	24.0	24.4	23.6	23.8	15.4	23.4	17.5	23.1	18.2
Other/unknown	31.9	30.2	31.6	28.4	30.3	19.1	29.4	21.5	28.6	22.9
Sex										
Female	37.3	37.0	36.3	34.3	35.2	23.0	34.7	26.8	34.2	29.1
Male	32.6	32.1	31.7	30.8	30.9	21.1	30.2	23.9	30.0	25.7
Dialysis modality										
Hemodialysis	35.3	34.9	34.3	32.8	33.3	22.2	32.7	25.4	32.3	27.4
Peritoneal dialysis	28.4	28.7	28.0	28.1	27.7	19.1	27.5	23.0	27.5	25.2

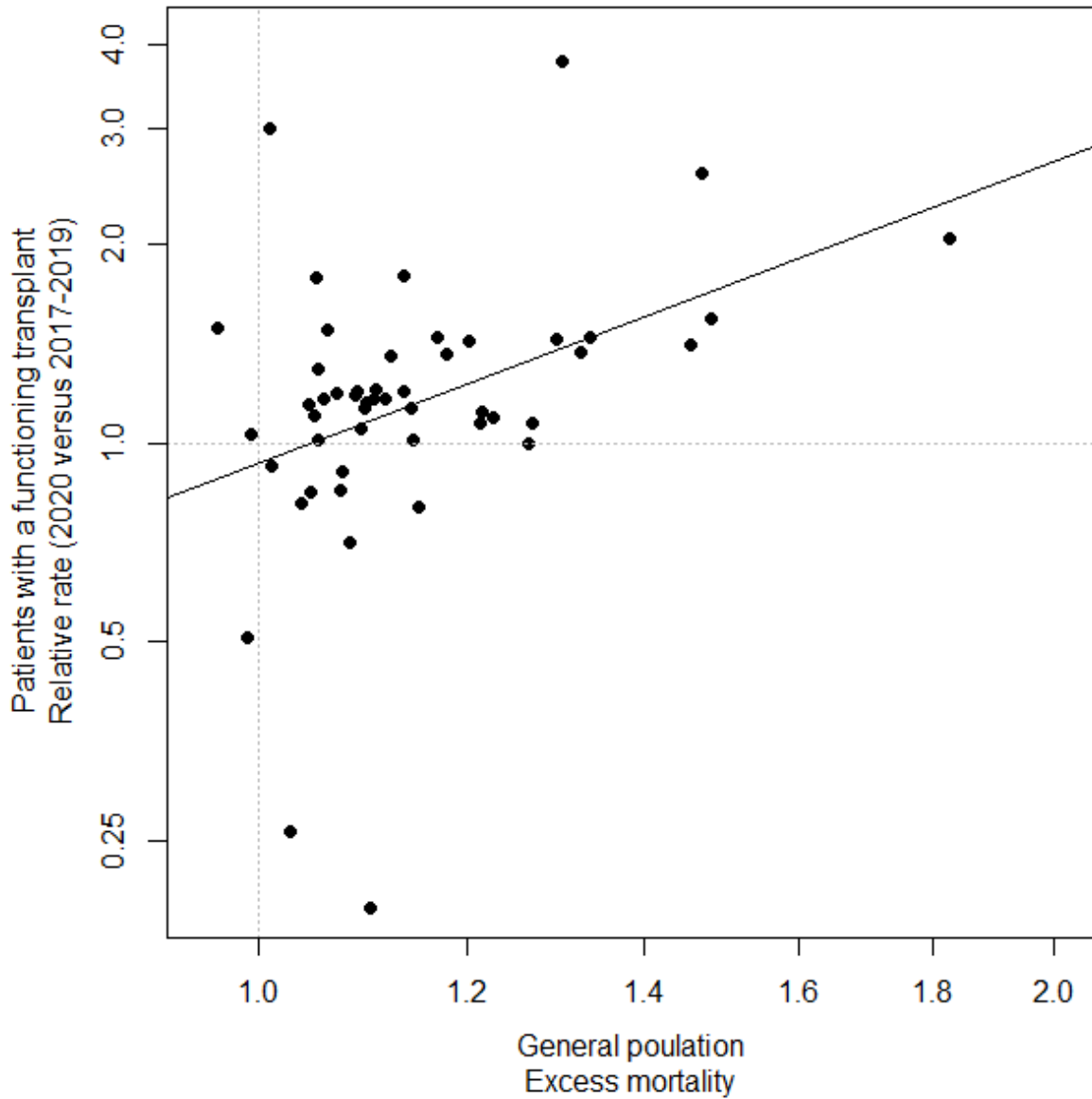
Note: Rate statistics indicate hospitalizations per 1000 patients per week.

Supplementary Figure 1. Per-interval relative rates of death during epidemiologic weeks 13-27 of 2020 versus 2017-2019 among all ESKD patients undergoing dialysis and per-interval ratios of observed versus expected deaths in the general population, stratified by state.



Note: Excess mortality in the general population was ascertained from the NCHS. Relative rates of death among all ESKD patients undergoing dialysis and corresponding 95% confidence intervals are depicted with points and vertical bars, whereas ratios of observed versus expected deaths in the general population are depicted with horizontal bars.

Supplementary Figure 2. Relative rates of death during epidemiologic weeks 13-27 of 2020 versus 2017-2019 among all ESKD patients with a functioning transplant and ratios of observed versus expected deaths in the general population, by state.



Note: Excess mortality in the general population was ascertained from the NCHS. Each state is depicted by a point. The solid line displays a linear regression of log-transformed relative rates of

death among patients with a functioning transplant on log-transformed excess mortality in the general population.