

Supplemental Digital Content Figure 1. Central venous access image library

Central line and dressing

1. Normal tunneled central line
2. Normal double-lumen power PICC
3. a. Skinny portion of the central line in dressing; b. Skinny portion out of dressing
4. Chest radiograph of normal placement

Complications

5. Outer sheath separated
6. Ruptured internal sheath
7. Ballooning
8. Tegaderm contact dermatitis
9. Reaction to chlorhexidine gluconate
10. a. Central line granulation tissue; b. and c. Central line granulation tissue with and without dressing.
11. Central line associated ulcer
12. a. Fibrin sheath radiograph; b. Fibrin sheath gross specimen
13. Cuff extrusion
14. Flipped line (radiograph)
15. Tunnel infection

Central line and dressing

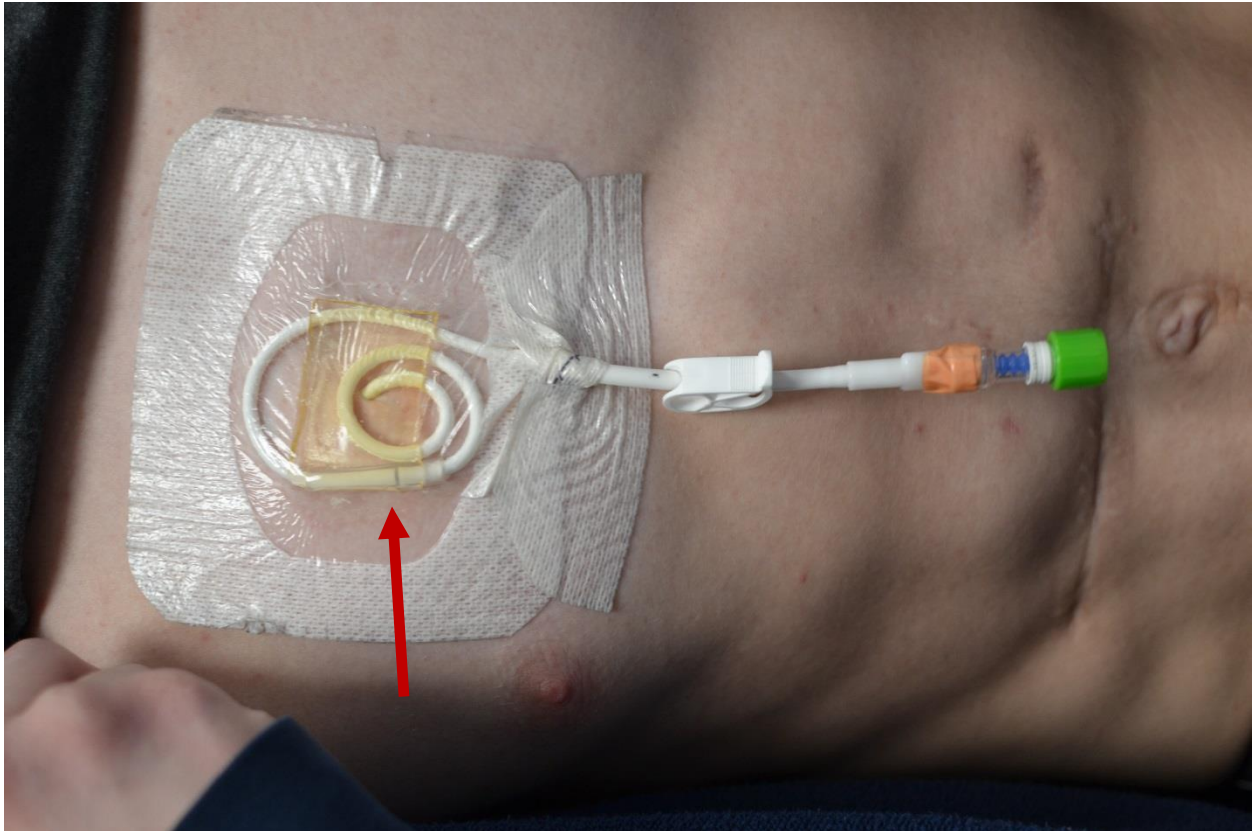
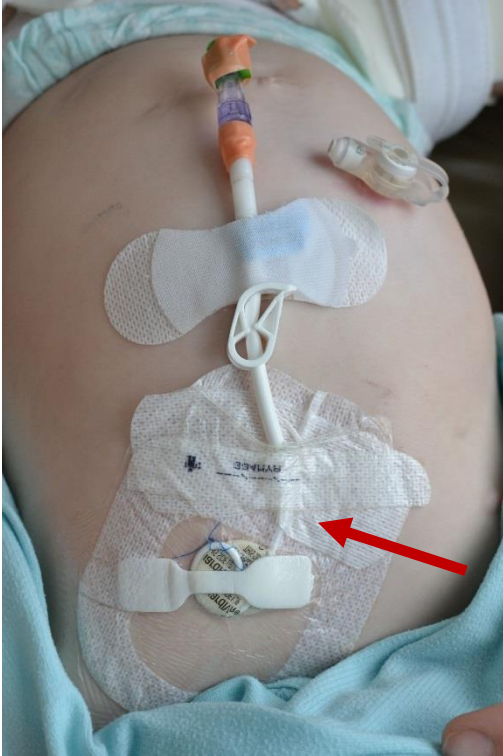


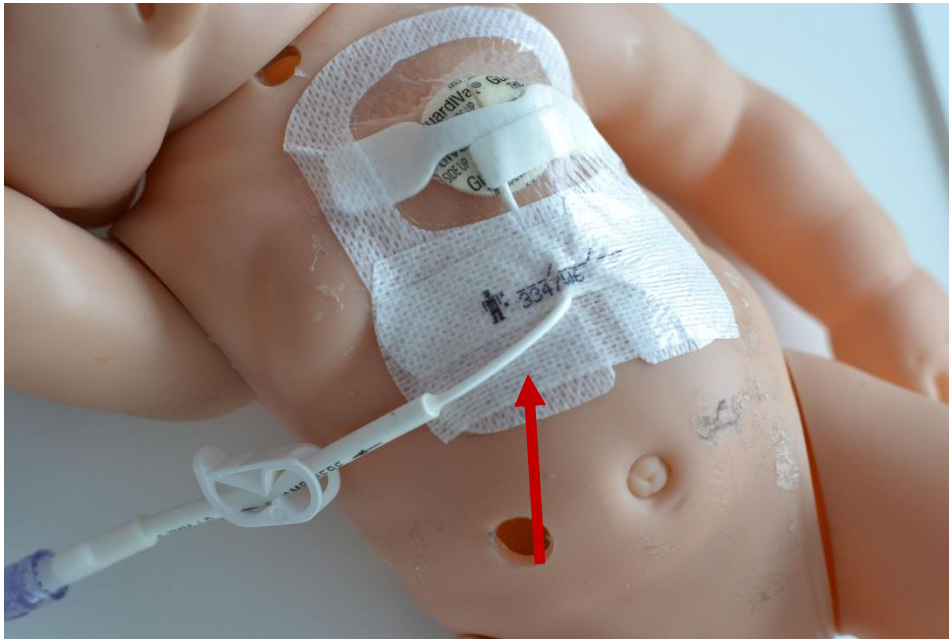
Image 1. Normal tunneled central line dressing with safety loop, chlorhexidine impregnated dressing, and line repair (arrow)



Image 2. Normal double-lumen power PICC with stat lock and chlorhexidine impregnated dressing



a.



b.

Image 3a. Skinny portion of the central line in dressing with safety loop (arrow); 3b. Skinny portion out of dressing with no safety loop (arrow). Ideally the thin portion would be under the dressing to prevent mechanical stress.

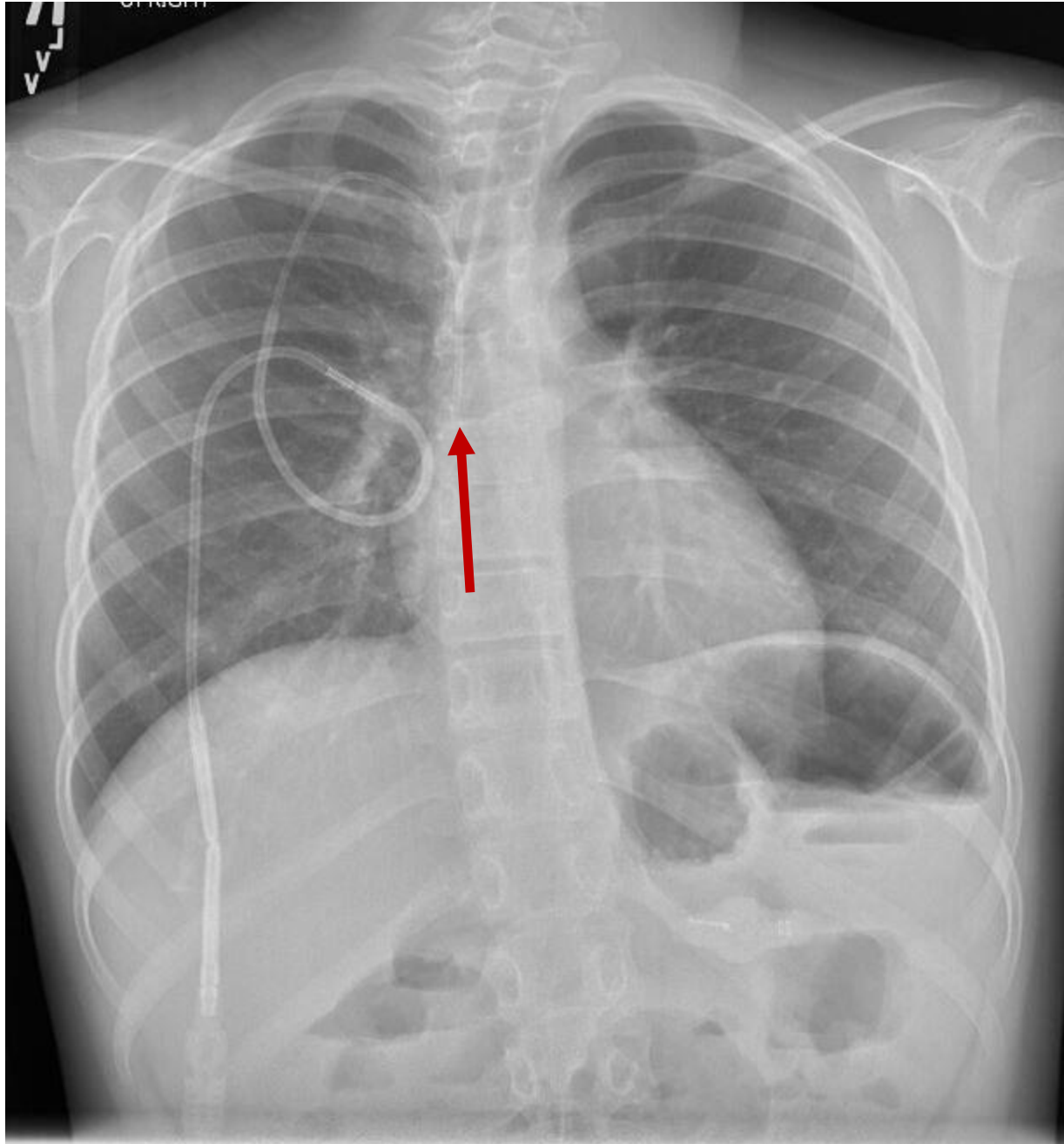


Image 4. Chest radiograph of normal placement, tip at cavoatrial junction (arrow)

Complications

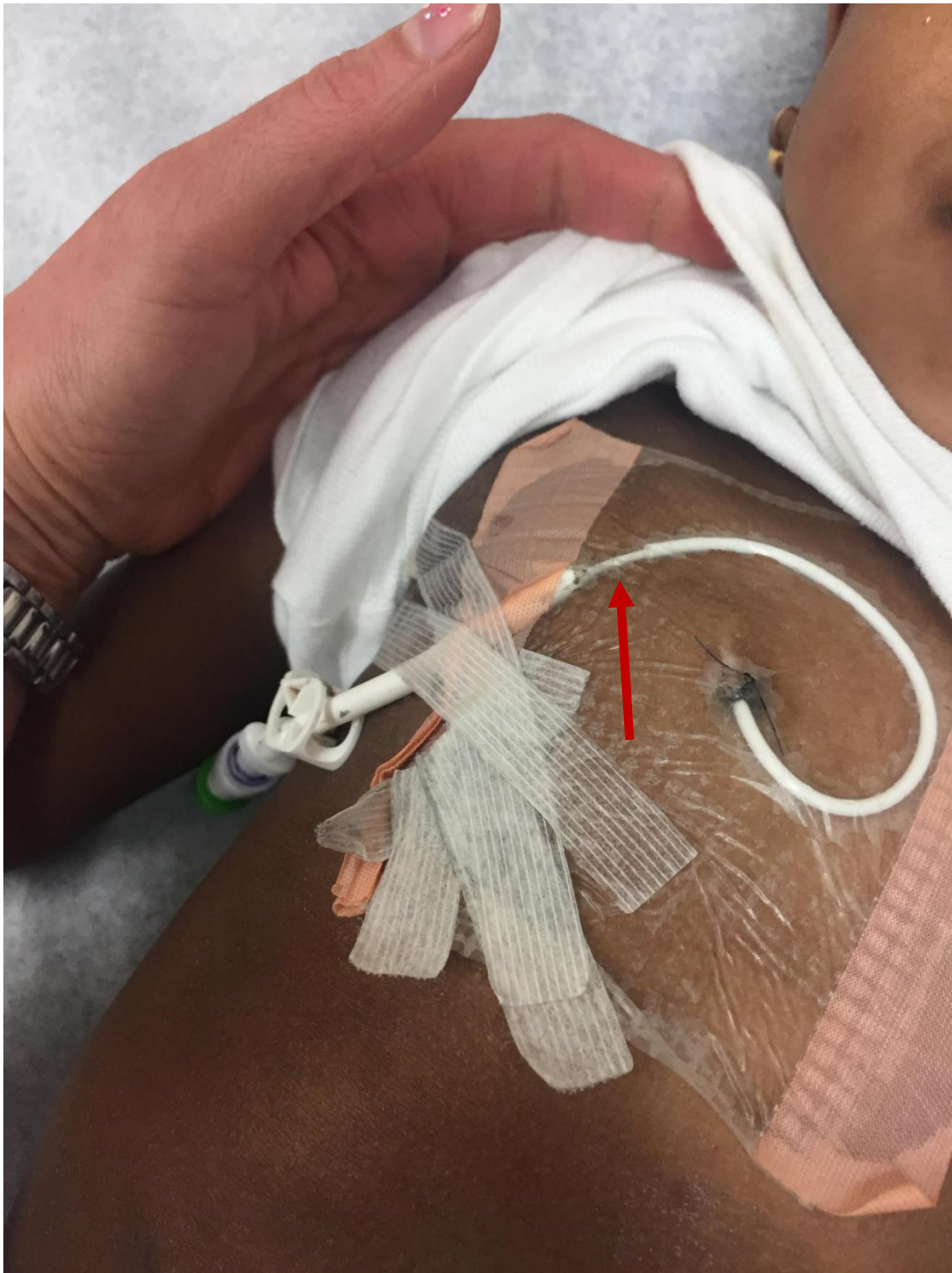


Image 5. Outer sheath separated (arrow)

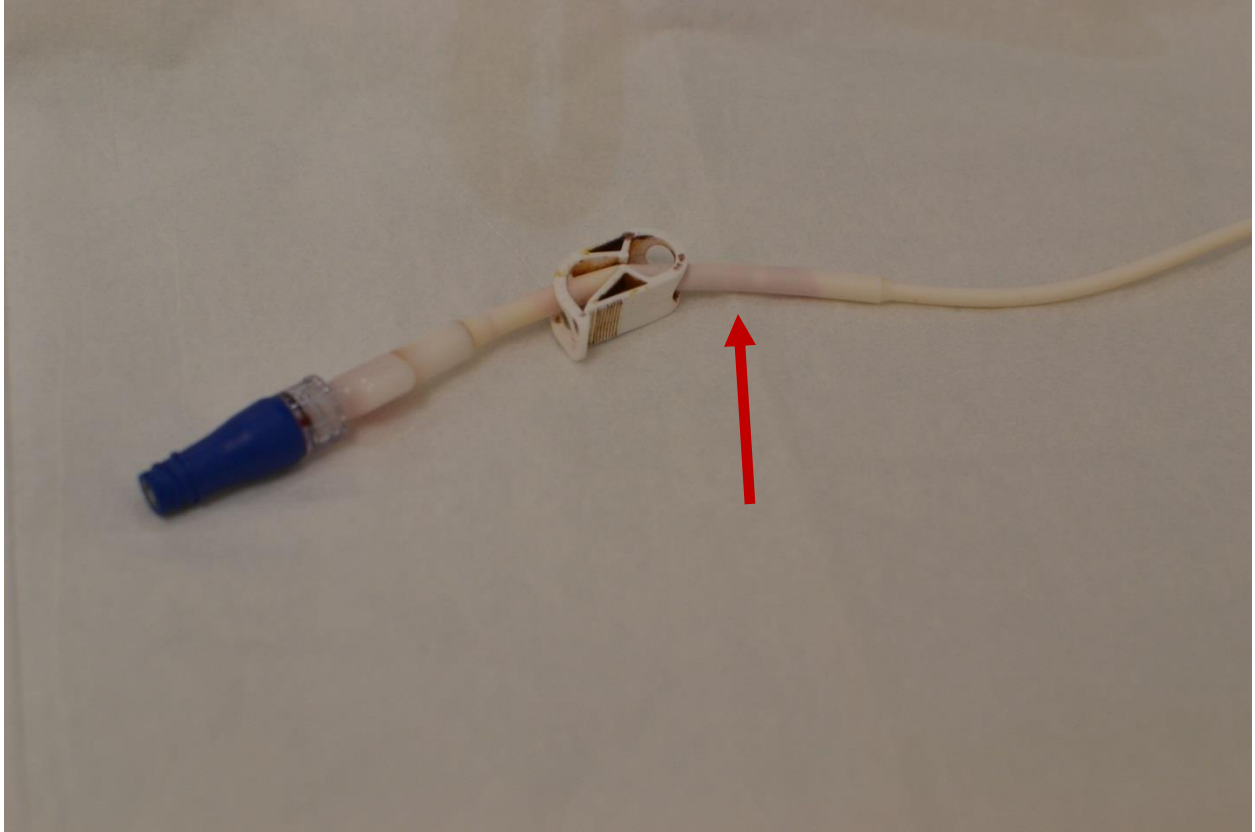


Image 6. Inner sheath rupture (arrow)



Image 7. Central line ballooning



Image 8. Tegaderm contact dermatitis and BioPatch



9. Reaction to chlorhexidine gluconate



a.



b.



c.

Image 10a. Central line granulation tissue, b and c. Central line granulation tissue with and without dressing (arrow at central line repair site)

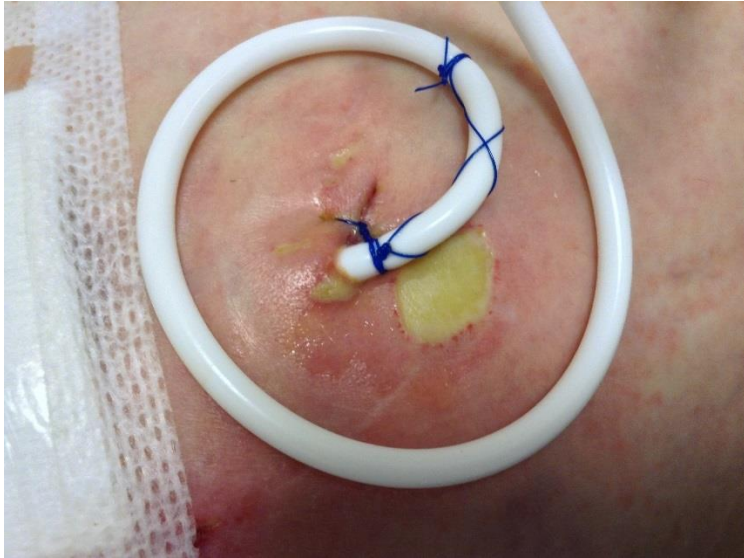
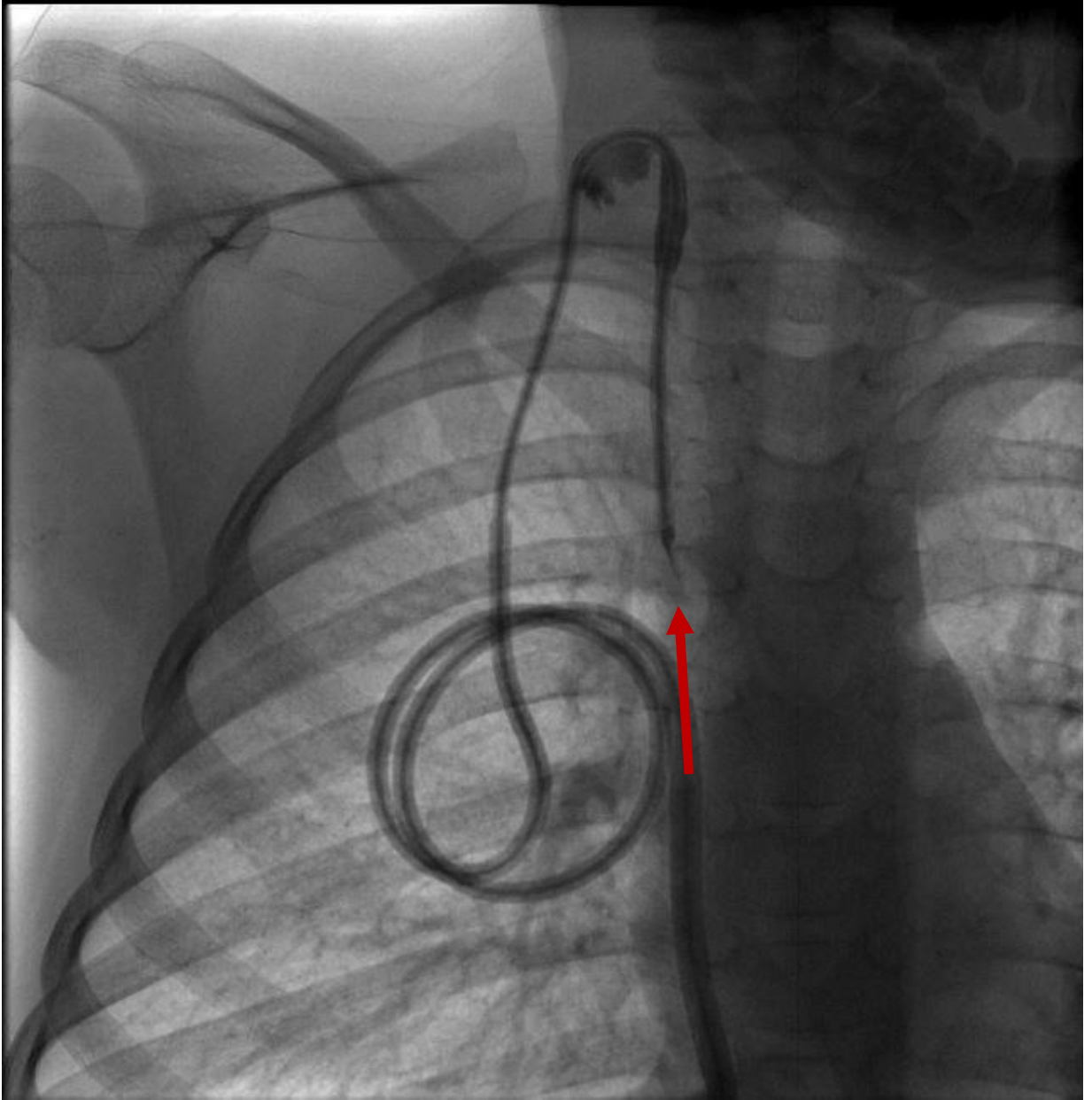
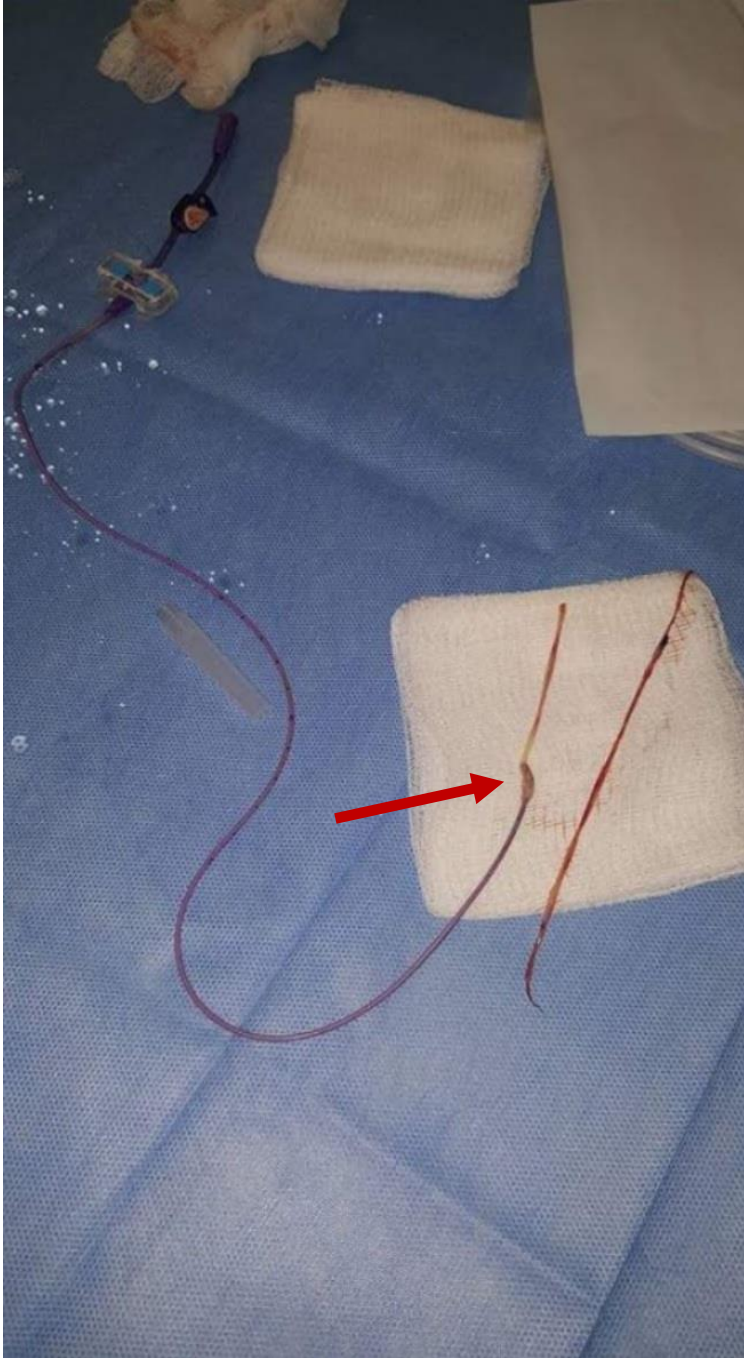


Image 11. Central line associated ulcer in various stages of healing



a.



b.

Image 12a. Fibrin sheath (Radiograph with arrow) b. Fibrin sheath (Gross specimen with arrow)



Image 13. Cuff extrusion



Image 14. Flipped line (radiograph)



Image 15. Tunnel infection