

Correction

RIF1 Is Essential for 53BP1-Dependent Nonhomologous End Joining and Suppression of DNA Double-Strand Break Resection

J. Ross Chapman, Patricia Barral, Jean-Baptiste Vannier, Valérie Borel, Martin Steger, Antonia Tomas-Loba, Alessandro A. Sartori, Ian R. Adams, Facundo D. Batista, and Simon J. Boulton*

*Correspondence: simon.boulton@cancer.org.uk
<https://doi.org/10.1016/j.molcel.2021.06.015>

(Molecular Cell 49, 858–871; March 7, 2013)

In the original published version of this article, the *53BP1* (*Flag-HA*) loading control HA immunoblot panel in Figure 6E was an accidental duplication of the *53BP1* (*Flag-HA*) pulldown HA immunoblot bands in Figure 6F. This mistake arose during figure preparation and was possible since both blots originated from a single experiment (resolved on common X-ray films), consistent with what is stated in the figure legend. The correct *53BP1* (*Flag-HA*) loading control HA immunoblot from Figure 6E is displayed here. The error does not alter the results or conclusions that can be drawn from this experiment or any other in this manuscript. The authors regret this error.

SUPPLEMENTAL INFORMATION

Supplemental information can be found online at <https://doi.org/10.1016/j.molcel.2021.06.015>.

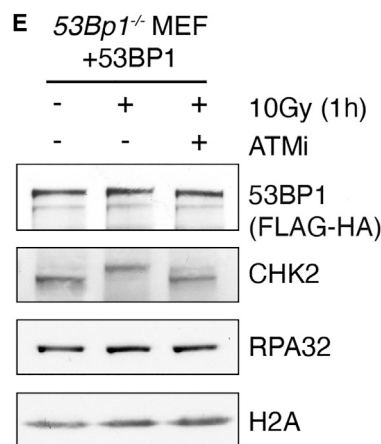


Figure 6E. ATM-Dependent Phosphorylation of 53BP1 Promotes RIF1 Interaction



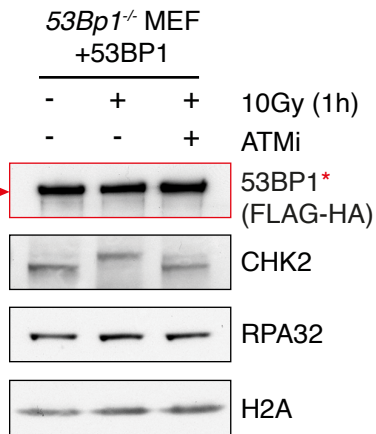
Molecular Cell, Volume 81

Supplemental information

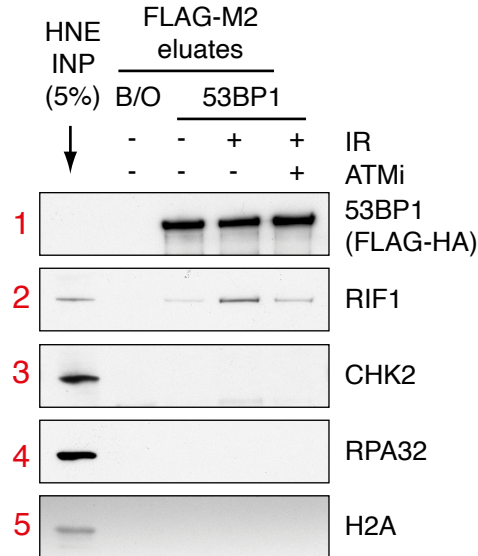
**RIF1 Is Essential for 53BP1-Dependent
Nonhomologous End Joining and Suppression
of DNA Double-Strand Break Resection**

J. Ross Chapman, Patricia Barral, Jean-Baptiste Vannier, Valérie Borel, Martin Steger, Antonia Tomas-Loba, Alessandro A. Sartori, Ian R. Adams, Facundo D. Batista, and Simon J. Boulton

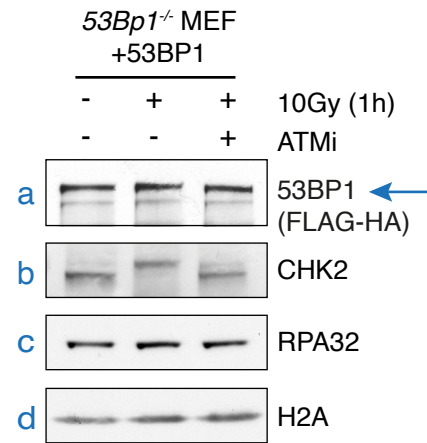
**E - manuscript panel
(incorrect HA blot)**



F - manuscript panel (all correct)

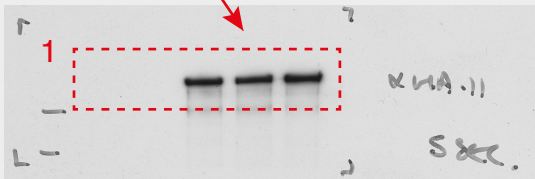


**E - manuscript panel
(corrected HA-53BP1 blot)**



*Flag-HA-53BP1 bands (detected with HA.11 mAb) in this panel were accidentally duplicated from Flag-HA-53BP1 pulldown bands below

Correct Flag-HA-53BP1 loading control



X/X indicate corresponding bands

