

Supplementary Information for Lack of Consideration of Sex and Gender in COVID-19 Clinical Studies

Emer Brady¹, Mathias Wullum Nielsen², Jens Peter Andersen¹, Sabine Oertelt-Prigione^{3,4}

¹Danish Centre for Studies on Research and Research Policy, Aarhus University, Aarhus, Denmark

²Department of Sociology, University of Copenhagen, Copenhagen, Denmark

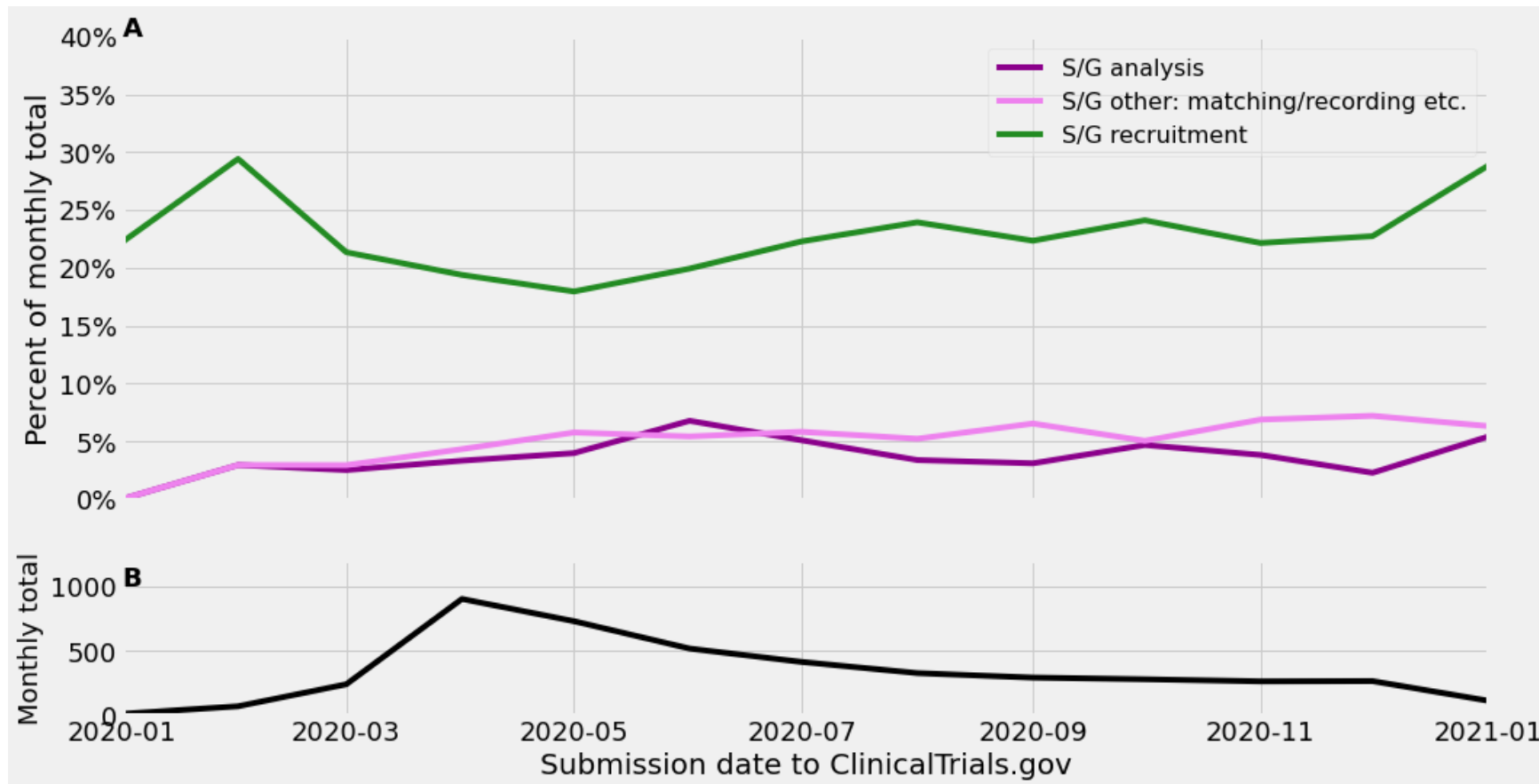
³Department of Primary and Community Care, Radboud University Medical Center, Nijmegen, Netherlands

⁴Medical Faculty OWL, University of Bielefeld, Bielefeld, Germany

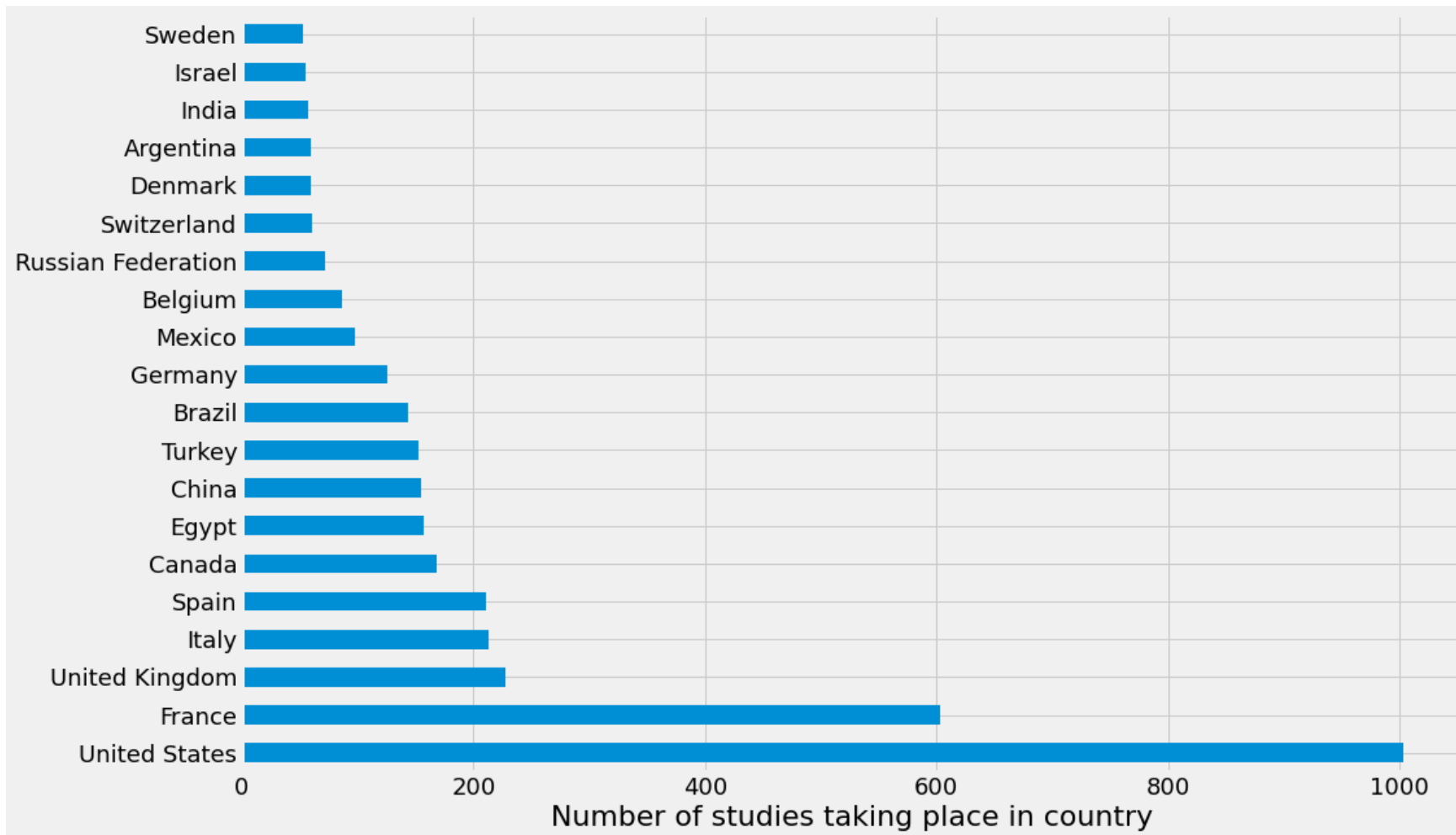
Contents

Supplementary Figures

Supplementary Figure 1: Level of attention to sex/gender per month.....	2
Supplementary Figure 2: Number of studies taking place in the top-20 countries hosting recruiting facilities.....	3



Supplementary Figure 1. Level of attention to sex/gender per month. Panel A: For all studies first submitted to ClinicalTrials.gov in a given month, we show the fraction that fall into the three main sex/gender categories we coded for (not shown are single sex and no sex/gender studies). Note that study registrations can be updated at any time after submission and that we coded the studies into sex/gender categories using the information available in the registrations on ClinicalTrials.gov in January 2021. Panel B shows the monthly counts of studies submitted to ClinicalTrials.gov for our full set of 4420. We used the ‘study first submitted date’ on the shared x-axis, since all studies have one and it is generally required that they are registered before they start, though this is not always adhered to.



Supplementary Figure 2. Number of studies taking place in the top-20 countries hosting recruiting facilities. A study is counted once under each country that hosts one or more of its recruiting facilities. 3920 studies provided addresses with country information for their participating facilities.